

RYOBI®

BPL3690D

ORIGINAL INSTRUCTIONS

36V Lithium-Ion Battery



Important!

It is essential that you read the instructions in this manual before assembling, maintaining, and operating the product.

Subject to technical modification.

Safety, performance, and dependability have been given top priority in the design of your battery pack.

SAFETY INSTRUCTIONS

Always mention the model number when communicating with RYOBI in regards to battery packs. The BPL3690D battery pack is for RYOBI 36V cordless products only. The battery pack is not compatible with RPW3600 pressure washer, RCS36B35 chainsaw, and RLM36X50HP lawnmower. Refer to the Operator's Manual provided with the product.

WARNING

Read all safety warnings and all instructions. Failure to follow the warnings and instructions may result in electric shock, fire and/or serious injury.

Save all warnings and instructions for future reference.

- **Battery tools do not have to be plugged into an electrical outlet. Therefore, they are always in operating condition. Be aware of possible hazards when not using your battery tool or when changing accessories.** Follow this rule to reduce the risk of electric shock, fire, or serious personal injury.
- **Do not place battery tools or their battery packs near fire or heat.** Follow this rule to reduce the risk of personal injury.
- **Do not crush, drop or damage the battery pack. Do not use a battery pack or charger that has been dropped or has received a sharp blow.** Properly dispose of a dropped or damaged battery immediately.
- **Do not charge a battery tool in a damp or wet location.** Follow this rule to reduce the risk of electric shock.
- **Charge a battery tool in a location where the temperature is more than 10°C but less than 25°C.** To reduce the risk of serious personal injury, do not store the battery tool outside or in vehicles.
- **Under extreme usage or temperature conditions, battery leakage may occur.** If the liquid comes in contact with the skin, wash immediately with soap and water, then neutralize with lemon juice or vinegar. If liquid gets into your eyes, flush them with clean water for at least 10 minutes, then seek immediate medical attention. Follow this rule to reduce the risk of serious personal injury.
- **Save these instructions.** Refer to them frequently and use them to instruct others who may use this product. If you loan someone this product, loan them these instructions also to prevent misuse of the product and possible injury.

BATTERY TOOL USE AND CARE

- **Recharge only with the charger specified by the manufacturer.** A charger that is suitable for one type of battery pack may create a risk of fire when used with another battery pack.
- **Use battery tools only with specifically designated battery packs.** Use of any other battery packs may create a risk of injury and fire.
- **When the battery pack is not in use, keep it away from other metal objects, like paper clips, coins, keys, nails, screws or other small metal objects, that can make a connection from one terminal to another.** Shorting the battery terminals together may cause burns or a fire.

ADDITIONAL BATTERY SAFETY WARNINGS

WARNING

To reduce the risk of fire, personal injury, and product damage due to a short circuit, never immerse your tool, battery pack or charger in fluid or allow fluid to flow inside them. Corrosive or conductive fluids, such as seawater, certain industrial chemicals, and bleach or bleach-containing products, etc., can cause a short circuit.

TRANSPORTING LITHIUM BATTERIES

Transport the battery in accordance with local and national provisions and regulations.

Follow all special requirements on packaging and labelling when transporting batteries by a third party. Ensure that no batteries can come in contact with other batteries or conductive materials while in transport by protecting exposed connectors with insulating, non-conductive caps or tape. Do not transport batteries that are cracked or leaking. Check with the forwarding company for further advice.

SPECIFICATIONS

Battery pack	BPL3690D
Nominal voltage	36 V
Compatible charger (not included)	BCL3620S, BCL3650F, BCL3617S, BCL3617U, BCL3660F
Battery capacity	9.0 Ah
Charger input	220–240 V, 50 Hz, AC only
Maximum charging time (BCL3617S)	330 minutes
Quick recharge (BCL3617S)	<div> <div>60%</div> <div>135 minutes</div> </div>

IMPORTANT!

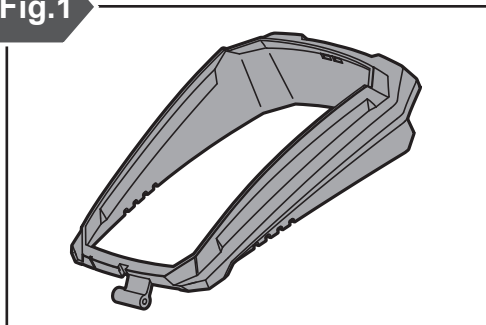
RYOBI 40 CM OR 46 CM LAWNMOWERS

See Fig. 1

For RYOBI RLM36B46S* and RLM36B40H lawnmowers, contact an authorised service centre to order the free battery door extension, part number 5131042687.

*Manufactured before December 2019. Check the manufacture date on the serial sticker of the product.

Fig.1



INSTALLING THE BATTERY DOOR EXTENSION

See Fig. 2–3

NOTE: Do not operate the product if the battery door does not properly close. Install the battery door extension to make sure that the battery pack is secured.

1. Open the battery door. Place the battery door extension on the battery compartment. Close the battery door, and firmly push the door against the extension.
2. Open the battery door, and check if the extension is securely attached to the door. Install the battery pack. Close the battery door.

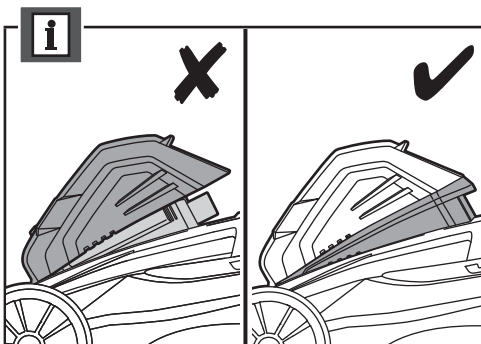


Fig.2

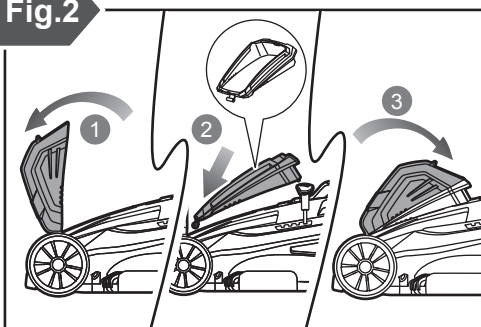
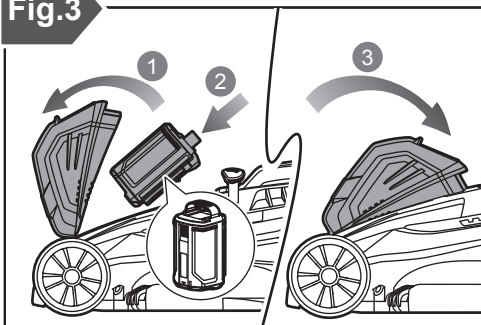


Fig.3



BATTERY PACK FEATURES

FUEL GAUGE

See Fig. 4

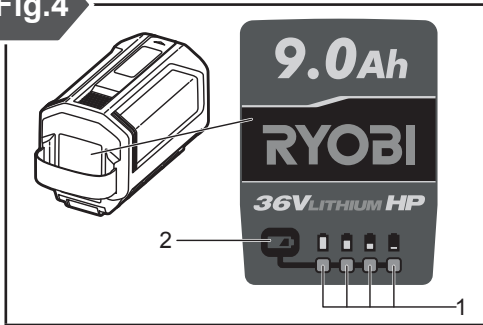
To display the amount of charge left in the battery, press the fuel gauge button.

- If four LEDs glow green, the battery pack is fully charged. The battery pack capacity is between 75%–100%.

- If three LEDs glow green and one is off, the battery pack capacity is between 50%–75%.
- If two LEDs glow green and other two are off, the battery pack capacity is between 25%–50%.
- If only one LED glows green and others are off, the battery pack capacity is lower than 25%. In this case, the battery pack can be used as usual until automatically turned off by the control program.
- If only one LED glows green but battery pack can not release power, the battery pack needs to be charged.

As the battery pack ages, the accuracy of the different LED indicators may change. Use the percentages as a guide only.

Fig.4



1. LED
2. Fuel gauge button

BATTERY PROTECTION FEATURES

RYOBI 36V lithium-ion battery packs are designed with features that protect the lithium-ion cells and maximise battery life. If the tool stops during use, it may be caused by the following:

- The maximum current draw of the battery pack has been exceeded, causing it to automatically stop powering the tool. Release and pull the trigger or remove and reinstall the battery pack. to reset the tool.
- Excessive temperatures can cause the battery to stop powering the tool. If the battery pack is too warm, allow it to cool down.

If the tool still does not work, the battery may not be sufficiently charged. Recharge the battery.

NOTE: The battery pack LED indicator will not work if the battery protection feature has caused the battery pack to stop powering the tool. Release and pull the trigger or remove and reinstall the battery pack. Check the fuel gauge if the battery pack LED indicator has resumed normal function.

CHARGING THE BATTERY PACK

Battery packs are shipped in a low charge condition. Charge them until the green LED on the front of the charger stops flashing and stays solid green.

Use a battery pack only with the recommended charger. If the charger does not charge the battery pack under normal circumstances, contact an authorised service centre for related advice.

1. Connect the charger to the power supply. Make sure that the power supply is the normal household voltage, 220–240 volts, AC only, 50 Hz.
2. Slide the battery pack along the groove of the charger.
3. Press down on the battery pack to be sure that the contacts on the battery pack engage properly with contacts in the charger. Make sure that the latch of the battery pack clicks into place.
4. When batteries become fully charged, unplug the charger from the power supply and remove the battery pack. Press the latch of the battery pack to remove the battery pack from the charger.

- Do not place the charger and battery pack in an area of extreme heat or cold. They work best at normal room temperature.


NOTE: The charger and battery pack should be placed in a location where the temperature is more than 10°C but less than 38°C.

- The battery pack becomes slightly warm to the touch while charging. This is normal and does not indicate a problem.
- After charging is complete, the charger green LED remains on for approximately 5 to 10 minutes and then turns off.


NOTE: LED indicators on chargers may vary. Refer to the operator's manual provided with the product.

- If the battery pack has been removed from the charger or the charger has been removed from the power supply, the battery pack indicator LED turns off after a few seconds.

CHARGING A HOT BATTERY PACK

If the battery pack is above normal temperature range, the LED of the  icon turns on or flashes. When the battery pack cools down to below 45°C, the charger automatically begins fast charge mode.

CHARGING A COOL BATTERY PACK

If the battery pack is below normal temperature range, the LED of the  icon turns on or flashes. When the battery warms to a temperature of more than 5°C, the charger automatically begins charge mode.

COLD WEATHER OPERATION

The lithium-ion battery pack can be used in temperatures down to –10°C. Put the battery pack on a tool and use the tool in a light-duty application. After about a minute, the pack will have warmed up and begin operating normally.

MAINTENANCE AND STORAGE

RYOBI battery packs have been designed to provide maximum trouble-free life. However, like all batteries,

they will eventually wear out. Do not disassemble battery pack and attempt to replace the battery cells. Handling of batteries, especially when wearing rings and jewelry, could result in a serious burn.

To obtain the longest possible battery life, follow these storage instructions.

- Remove the battery pack from the charger when it is fully charged and ready for use. For battery pack storage longer than 30 days:
 - Store the battery pack where the temperature is below 38°C and away from moisture.
 - Store battery packs in a 30%–50% charged condition.
 - Every six months of storage, run battery with a tool until cut off by pack's program control. Then charge the pack as normal.

BATTERY PACK REMOVAL AND PREPARATION FOR RECYCLING

To preserve natural resources, recycle or dispose of batteries properly.

This product contains lithium-ion batteries. Local, state or federal laws may prohibit disposal of lithium-ion batteries in ordinary trash.

Consult your local waste authority for information regarding available recycling or disposal options.

WARNING

Upon removal, cover the battery pack's terminals with heavy-duty adhesive tape. Do not attempt to destroy or disassemble battery pack or remove any of its components. Lithium-ion batteries must be recycled or disposed of properly. Never touch both terminals with metal objects and/or body parts as short circuit may result. Keep battery packs away from children. Failure to comply with these warnings could result in fire and/or serious injury.

SYMBOLS



Safety alert



Read the instructions carefully before starting the machine.



Li-Ion

Recycle lithium-ion batteries




Regulatory Compliance Mark (RCM). The product meets applicable regulatory requirements.



Waste electrical products should not be disposed of with household waste. Recycle where facilities exist. Check with your local authority or retailer for recycling advice.

BATTERY PACK LED INDICATION DESCRIPTIONS

				Status
Off	Off	Off	Flashing	In charging process, battery pack capacity is lower than 25%.
Off	Off	Flashing	On	In charging process, battery pack capacity is between 25% and 50%.
Off	Flashing	On	On	In charging process, battery pack capacity is between 50% and 75%.
Flashing	On	On	On	In charging process, battery pack capacity is between 75% and 100%.
On	On	On	On	Fully charged
Off	Off	Off	Off	One minute after full charge, all LEDs on the battery are off, charger LED is on with green color.
Flashing	Off	Off	Flashing	Over temperature protection; remove the battery and allow it to cool down.
Off	Flashing	Flashing	Off	Overload protection; release and pull the trigger or remove and reinstall the battery pack to reset the tool.

If your battery shows any LED sequence other than what is in the table, contact RYOBI online at Ryobi.com.au for Australia or Ryobi.co.nz for New Zealand.



*RYOBI is a trade mark of Ryobi Limited,
and is used under license.*
© 2020 Techtronic Cordless GP

Imported by:

Techtronic Industries Australia Pty Ltd
31 Gilby Road, Mount Waverley, VIC 3149
Melbourne, Australia

Techtronic Industries New Zealand Ltd.
Unit C, 70 Business Parade South,
Highbrook, Auckland, 2013, New Zealand

960012033-01