

RYOBI®

ORIGINAL INSTRUCTIONS

Cordless Pole Pruner

OPP1850



Important!

It is essential that you read the instructions in this manual before assembling, operating, and maintaining the product.

Subject to technical modification.

Safety, performance, and dependability have been given top priority in the design of your cordless pole pruner.

INTENDED USE

The cordless pole pruner is only intended for use outdoors. For safety reasons, the product must be adequately controlled by a two-handed operation.

The product is designed for cutting and pruning of small limbs and branches whose diameter is less than or equal to the bar length, and are located high in the tree while the operator maintains a steady footing on the ground. The product is designed to be extended to a maximum length of 2.9 m. Do not exceed this working length.

It is not intended to be used while climbing or as a conventional chainsaw for close quarter limbing and pruning of material at ground level.

Do not use the product for any other purpose.

GENERAL POWER TOOL SAFETY WARNINGS

WARNING

Read all safety warnings and all instructions. Failure to follow the warnings and instructions may result in electric shock, fire and/or serious injury.

Save all warnings and instructions for future reference.

The term "power tool" in the warnings refers to your mains-operated (corded) power tool or battery-operated (cordless) power tool.

WORK AREA SAFETY

- **Keep work area clean and well lit.** Cluttered or dark areas invite accidents.
- **Do not operate power tools in explosive atmospheres, such as in the presence of flammable liquids, gases or dust.** Power tools create sparks, which may ignite the dust or fumes.
- **Keep children and bystanders away while operating a power tool.** Distractions can cause you to lose control.

ELECTRICAL SAFETY

- **Power tool plugs must match the outlet. Never modify the plug in any way. Do not use any adapter plugs with earthed (grounded) power tools.** Unmodified plugs and matching outlets will reduce risk of electric shock.
- **Avoid body contact with earthed or grounded surfaces, such as pipes, radiators, ranges and refrigerators.** There is an increased risk of electric shock if your body is earthed or grounded.
- **Do not expose power tools to rain or wet conditions.** Water entering a power tool will increase the risk of electric shock.
- **Do not abuse the cord. Never use the cord for carrying, pulling or unplugging the power tool. Keep cord away from heat, oil, sharp edges, or moving parts.** Damaged or entangled cords increase the risk of electric shock.
- **When operating a power tool outdoors, use an extension cord suitable for outdoor use.** Use of a cord

suitable for outdoor use reduces the risk of electric shock.

- **If operating a power tool in a damp location is unavoidable, use a residual current device (RCD) protected supply.** Use of an RCD reduces the risk of electric shock.

PERSONAL SAFETY

- **Stay alert, watch what you are doing and use common sense when operating a power tool. Do not use a power tool while you are tired or under the influence of drugs, alcohol, or medication.** A moment of inattention while operating power tools may result in serious personal injury.
- **Use personal protective equipment. Always wear eye protection.** Protective equipment such as dust mask, non-skid safety shoes, hard hat or hearing protection used for appropriate conditions will reduce personal injuries.
- **Prevent unintentional starting. Ensure the switch is in the off-position before connecting to power source and/or battery pack, picking up, or carrying the tool.** Carrying power tools with your finger on the switch or energising power tools that have the switch on invites accidents.
- **Remove any adjusting key or wrench before turning the power tool on.** A wrench or a key left attached to a rotating part of the power tool may result in personal injury.
- **Do not overreach. Keep proper footing and balance at all times.** This enables better control of the power tool in unexpected situations.
- **Dress properly. Do not wear loose clothing or jewellery. Keep your hair, clothing and gloves away from moving parts.** Loose clothes, jewellery or long hair can be caught in moving parts.
- **If devices are provided for the connection of dust extraction and collection facilities, ensure these are connected and properly used.** Use of dust collection can reduce dust-related hazards.
- **Do not let familiarity gained from frequent use of tools allow you to become complacent and ignore tool safety principles.** A careless action can cause severe injury within a fraction of a second.

POWER TOOL USE AND CARE

- **Do not force the power tool. Use the correct power tool for your application.** The correct power tool will do the job better and safer at the rate for which it was designed.
- **Do not use the power tool if the switch does not turn it on and off.** Any power tool that cannot be controlled with the switch is dangerous and must be repaired.
- **Disconnect the plug from the power source and/or the battery pack from the power tool before making any adjustments, changing accessories or storing power tools.** Such preventive safety measures reduce the risk of starting the power tool accidentally.
- **Store idle power tools out of the reach of children and do not allow persons unfamiliar with the power tool or these instructions to operate the power tool.** Power tools are dangerous in the hands of untrained users.

- **Maintain power tools.** Check for misalignment or binding of moving parts, breakage of parts and any other condition that may affect the power tool's operation. If damaged, have the power tool repaired before use. Many accidents are caused by poorly maintained power tools.
- **Keep cutting tools sharp and clean.** Properly maintained cutting tools with sharp cutting edges are less likely to bind and are easier to control.
- **Use the power tool, accessories and tool bits etc, in accordance with these instructions, taking into account the working conditions and the work to be performed.** Use of the power tool for operations different from those intended could result in a hazardous situation.
- **Keep handles and grasping surfaces dry, clean and free from oil and grease.** Slippery handles and grasping surfaces do not allow for safe handling and control of the tool in unexpected situations.

BATTERY TOOL USE AND CARE

- **Recharge only with the charger specified by the manufacturer.** A charger that is suitable for one type of battery pack may create a risk of fire when used with another battery pack.
- **Use power tools only with specifically designated battery packs.** Use of any other battery packs may create a risk of injury and fire.
- **When battery pack is not in use, keep it away from other metal objects, like paper clips, coins, keys, nails, screws or other small metal objects, that can make a connection from one terminal to another.** Shorting the battery terminals together may cause burns or a fire.
- **Under abusive conditions, liquid may be ejected from the battery; avoid contact. If contact accidentally occurs, flush with water. If liquid contacts eyes, additionally seek medical help.** Liquid ejected from the battery may cause irritation or burns.
- **Do not use a battery pack or tool that is damaged or modified.** Damaged or modified batteries may exhibit unpredictable behaviour resulting in fire, explosion or risk of injury.
- **Do not expose a battery pack or tool to fire or excessive temperature.** Exposure to fire or temperature above 130°C may cause explosion.
- **Follow all charging instructions and do not charge the battery pack or tool outside the temperature range specified in the instructions.** Charging improperly or at temperatures outside the specified range may damage the battery and increase the risk of fire.

SERVICE

- **Have your power tool serviced by a qualified repair person using only identical replacement parts.** This will ensure that the safety of the power tool is maintained.

ADDITIONAL GENERAL SAFETY WARNINGS

- Some regions have regulations that restrict the use of the product. Check with your local authority for advice.
- Never allow children or people unfamiliar with the instructions to use the product. Local regulations may restrict the age of the operator.
- Ensure before each use that all controls and safety devices function correctly. Do not use the product if the "off" switch does not stop the motor.
- Wear full eye and hearing protection, strong sturdy gloves, as well as head protection while operating the product; use a face mask if operation is dusty.
- Do not wear loose fitting clothing, short trousers, or jewellery of any kind.
- Secure long hair so it is above shoulder level to prevent entanglement in moving parts.
- Beware of thrown, flying, or falling objects; keep all bystanders, children, and animals at least 15 m away from work area.
- Do not operate in poor lighting. The operator requires a clear view of the work area to identify potential hazards.
- Use of hearing protection reduces the ability to hear warnings (shouts or alarms). The operator must pay extra attention to what is going on in the working area.
- Operating similar tools nearby increases both the risk of hearing injury and the potential for other persons to enter your working area.
- Keep firm footing and balance. Do not overreach. Overreaching can result in loss of balance and can increase the risk of kickback.
- Keep all parts of your body away from any moving part.
- Inspect the product before each use. Check for correct operation of all controls. Check for loose fasteners, make sure all guards, and handles are properly and securely attached. Replace any damaged parts before use.
- Do not modify the product in any way or use parts and accessories, which are not recommended by the manufacturer.
- Do not allow familiarity with the product to make you careless. A careless fraction of a second is sufficient to inflict serious injury.
- Keep handles and grasping surfaces dry, clean, and free from oil and grease. Slippery handles and grasping surfaces do not allow for safe handling and control of the tool in unexpected situations.

WARNING

If the product is dropped, suffers heavy impact, or begins to vibrate abnormally, immediately stop the product and inspect for damage or identify the cause of the vibration. Any damage should be properly repaired or replaced by an authorised service centre.

PRUNER SAFETY WARNINGS

- Do not use the product when there is a possibility of thunderstorm or lightning. Store the product safely indoors.

- Ensure all guards, handles are properly fitted, and are in good condition.
- Do not start using the product until you have a clear work area, secure footing, and a planned retreat path away from the falling branches or limbs.
- Beware of the emission of lubricant mist and saw dust. Wear mask or respirator if required.
- During operation, hold the product with both hands. Use one hand to firmly grasp the front hand grip. Use the other hand to grasp the rear handle and operate the trigger release and on/off trigger.
- Hold the product by insulated gripping surfaces only, because the saw chain may contact hidden wiring. Saw chains contacting a "live" wire may make exposed metal parts of the power tool "live" and could give the operator an electric shock.
- Do not modify the product in any way or use it to power any attachments or devices not recommended by the manufacturer.
- Your product comes with a harness. You must use it while operating the product. It will assist you to control the drop of the product after the cut is completed. It will also help support the weight of the product during use and while moving between pruning positions.
- Identify the quick release mechanism and practice using it before you start using the product. Its correct use may prevent serious injury in the case of an emergency. Never wear additional clothing over the harness or otherwise restrict access to the quick release mechanism.
- Before starting the product, make sure the saw chain is not contacting any object.
- An incorrectly tensioned chain can jump off the guide bar and could result in serious injury. Check before each use and frequently, especially a new chain.
- To reduce the risk of injury associated with contacting moving parts, always stop the product, remove the battery pack, and make sure all moving parts have come to a complete stop:
 - before servicing
 - before leaving the product unattended
 - before clearing a blockage
 - before checking, cleaning, and working on the product
 - before changing accessories
 - after striking a foreign object
 - whenever performing maintenance
 - whenever the product starts to vibrate abnormally
- Kickback may occur when the nose or tip of the guide bar touches an object, or when the wood closes in and pinches the saw chain in the cut. Tip contact in some cases may cause a sudden reverse reaction, kicking the guide bar up and back towards the operator. Pinching the saw chain along the top of the guide bar may push the guide bar rapidly back towards the operator. Either of these reactions may cause you to lose control of the product, which could result in serious personal injury. Do not rely exclusively upon the safety devices built into the product. As a product user, you should take several steps to keep your cutting jobs free from accident or

injury. Kickback is the result of tool misuse and/or incorrect operating procedures or conditions and can be avoided by taking the following precautions:

- Make sure that the area in which you are cutting is free from obstructions. Do not let the nose of the guide bar contact a branch, limb, or any other obstruction while you are operating the product.
- Maintain a firm grip, with both hands on the product and position your body and arm to allow you to resist kickback forces. Kickback forces can be controlled by the operator, if proper precautions are taken. Do not let go of the product.
- Do not overreach. This helps prevent unintended tip contact and enables better control of the product in unexpected situations.
- Only use replacement bars and chains specified by the manufacturer. Incorrect replacement bars and chains may cause chain breakage and/or kickback.
- Sharpening the chain safely is a skilled task. Therefore, the manufacturer strongly recommends that a worn or dull chain is replaced with a new one. The part number is available in the product specification table in this manual.
- Do not use on a ladder or unstable support. Always cut with both feet on solid ground to prevent being pulled off balance.
- To protect yourself from electrocution, do not operate within 10 m of overhead electrical lines.
- Beware of falling branches or those which rebound after hitting the ground.
- Use extreme caution when cutting small-sized brush and saplings because slender material may catch the saw chain and be whipped toward you or pull you off balance.
- When cutting a limb that is under tension, be alert for spring back so that you will not be struck when tension in wood fibres are released.
- If the cutting performance deteriorates over time, check if the chain teeth are sharp and clean. If necessary, replace the original chain (and bar) as recommended by the manufacturer.
- If the chain and bar become pinched or trapped in branches too high to reach, seek advice from a professional tree service specialist about safe removal of the cutting means.

WARNING

Check that all the shaft couplings on the extension pole and tool are securely fastened before each use and at frequent intervals.

PERSONAL PROTECTIVE EQUIPMENT

Good quality, personal protective equipment as used by professionals will help reduce the risk of injury to the operator. The following items should be used when operating your product:

- Safety helmet
- Hearing protection
- Eye and face protection

- Gloves
- Footwear

ADDITIONAL BATTERY SAFETY WARNINGS

WARNING

To reduce the risk of fire, personal injury, and product damage due to a short circuit, never immerse your tool, battery pack, or charger in fluid or allow a fluid to flow inside them. Corrosive or conductive fluids, such as seawater, certain industrial chemicals, and bleach or bleach-containing product, etc., can cause a short circuit.

TRANSPORTATION AND STORAGE

- Stop the product, remove the battery pack, and allow it to cool down before storing or transporting.
- Clean all foreign materials from the product. Store it in a cool, dry and well-ventilated place that is inaccessible to children. Keep away from corrosive agents, such as garden chemicals and de-icing salts. Do not store outdoors.
- Cover the saw bar with the scabbard before storing or transporting the product.
- When storing the product for a long period of time (one month or longer), be sure the chain is lightly lubricated to prevent rust.
- For transportation, secure the product against movement or falling to prevent injury to persons or damage to the product.

TRANSPORTING LITHIUM BATTERIES

Transport the battery in accordance with local and national provisions and regulations. Follow all special requirements on packaging and labelling when transporting batteries by a third party.

Ensure that no batteries can come in contact with other batteries or conductive materials while in transport by protecting exposed connectors with insulating, non-conductive caps or tape. Do not transport batteries that are cracked or leaking. Check with the forwarding company for further advice.

MAINTENANCE

WARNING

Use only original manufacturer's replacement parts, accessories, and attachments. Failure to do so can cause possible injury, contribute to poor performance, and may void your warranty.

WARNING

Servicing requires extreme care and knowledge and should be performed only by a qualified service technician. Have the product serviced by an authorised service centre only. When servicing, use only original replacement parts.

WARNING

The saw chain is very sharp. To prevent personal injury, exercise extreme caution when cleaning, fitting, or removing the chain scabbard. Always wear protective gloves when performing maintenance on the chain.

WARNING

Improper chain maintenance increases the potential of kickback. Failure to replace or repair damaged chain can cause serious injury.

- Switch off and remove the battery pack before conducting any maintenance or cleaning work.
- You may only make adjustments or repairs described in this manual. For other repairs, contact the authorised service agent.
- Follow instructions for lubricating and chain tension checking and adjustment.
- After each use, clean the body and handles of the product with a soft dry cloth.
- Check all nuts, bolts and screws at frequent intervals for proper tightness to ensure the product is in safe working condition. Any part that is damaged should be properly repaired or replaced by an authorised service center.

MAINTENANCE SCHEDULE

The bar may be reversed to distribute wear for maximum life. The bar should be cleaned every day of use and checked for wear and damage.

Daily check

Bar lubrication	Before each use
Chain tension	Before each use and frequently
Chain sharpness	Before each use, visual check
For damaged parts	Before each use
For loose fasteners	Before each use

RESIDUAL RISKS

Even when the product is used as prescribed, it is still impossible to completely eliminate certain residual risk factors. The following hazards may arise during use, and the operator should pay special attention to avoid the following:

- injury caused by vibration
 - Always use the right tool for the job. Use designated handles and restrict working time and exposure.
- injury caused by noise
 - Exposure to noise can cause hearing injury. Wear ear protection and limit exposure.
- injury from contact with the exposed saw teeth of the chain

- injury caused by kickback or sudden and unforeseen movement of the guide bar
- injury caused by ejected parts of the saw chain
- injury caused by thrown-off parts of the workpiece (wood chips and splinters)
- injury caused by dust and particles
- injury caused by skin contact with the lubricant or oil

RISK REDUCTION

It has been reported that vibrations from handheld tools may contribute to a condition called Raynaud's Syndrome. Symptoms may include tingling, numbness and blanching of the fingers, usually apparent upon exposure to cold. Hereditary factors, exposure to cold and dampness, diet, smoking and work practices are all thought to contribute to the development of these symptoms. There are measures that can be taken by the operator to possibly reduce the effects of vibration:

- Keep your body warm in cold weather. When operating the product, wear gloves to keep the hands and wrists warm. It is reported that cold weather is a major factor contributing to Raynaud's Syndrome.
- After each period of operation, exercise to increase blood circulation.
- Take frequent work breaks. Limit the amount of exposure per day.

If you experience any of the symptoms of this condition, immediately discontinue use and see your physician.

WARNING

Injuries may be caused, or aggravated, by prolonged use of a tool. When using any tool for prolonged periods, ensure you take regular breaks.

WHAT'S IN THE BOX

- Pruner attachment x 1
- Rear handle with pole assembly x 1
- Manual x 1
- Scabbard x 1
- Shoulder strap x 1
- Oil x 1
- Allen wrench x 1

SYMBOLS ON THE PRODUCT



Safety alert



Read the instruction manual.



Do not expose to rain or damp conditions.



Electrical hazard. Keep at least 10 m away from the overhead electric-powered lines.



Beware of thrown or flying objects. Keep all bystanders at least 15 m away.



Wear non-slip, heavy-duty protective gloves when handling the pole pruner and the blade.



Wear slip-resistant foot wear.



Appropriate ear, eye, and head protection must be worn.



Regulatory compliance mark



Moving direction of the chain



Pull: Quick release tab



Waste electrical products should not be disposed of with household waste. Please recycle where facilities exist. Check with your Local Authority or retailer for recycling advice.



Chain tensioning labels

The following signal words and meanings are intended to explain the levels of risk associated with the product:



DANGER

Indicates an imminently hazardous situation, which, if not avoided, will result in death or serious injury.



WARNING

Indicates a potentially hazardous situation, which, if not avoided, could result in death or serious injury.



CAUTION

Indicates a potentially hazardous situation, which, if not avoided, may result in minor or moderate injury.

CAUTION

(Without Safety Alert Symbol)
Indicates a situation that may result in property damage.

SYMBOLS IN THIS MANUAL



Parts or accessories sold separately



Note

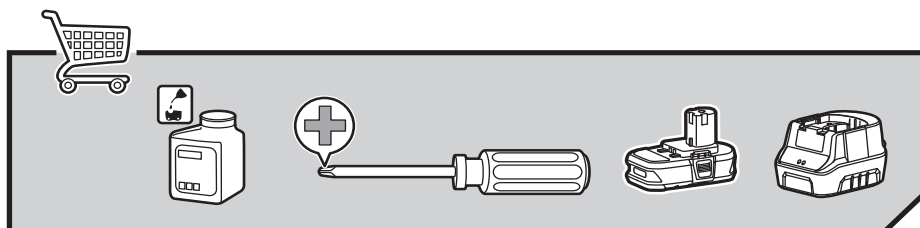
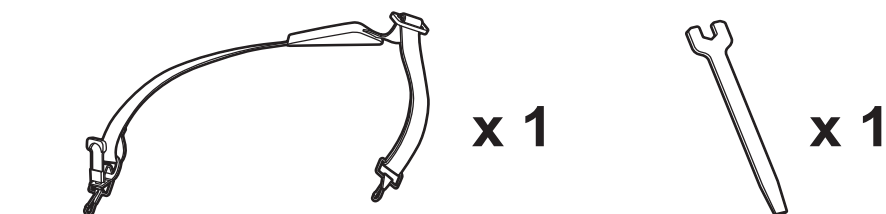
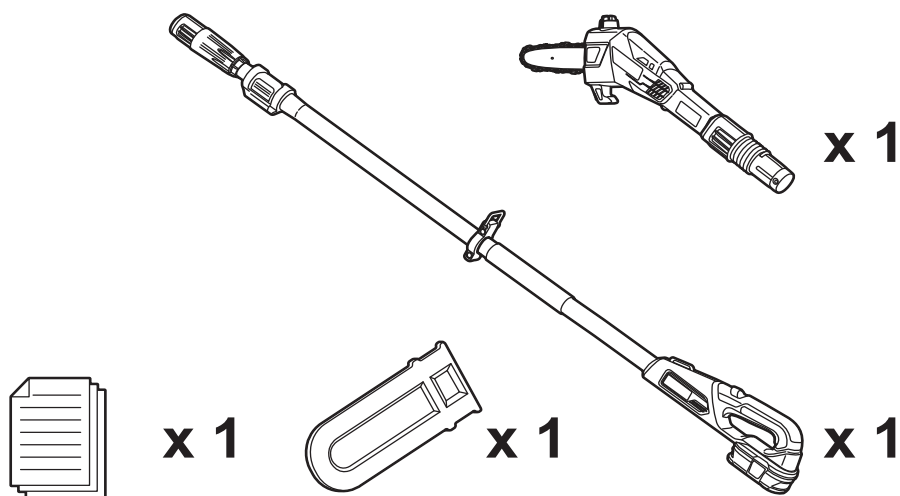


Warning

OPERATION

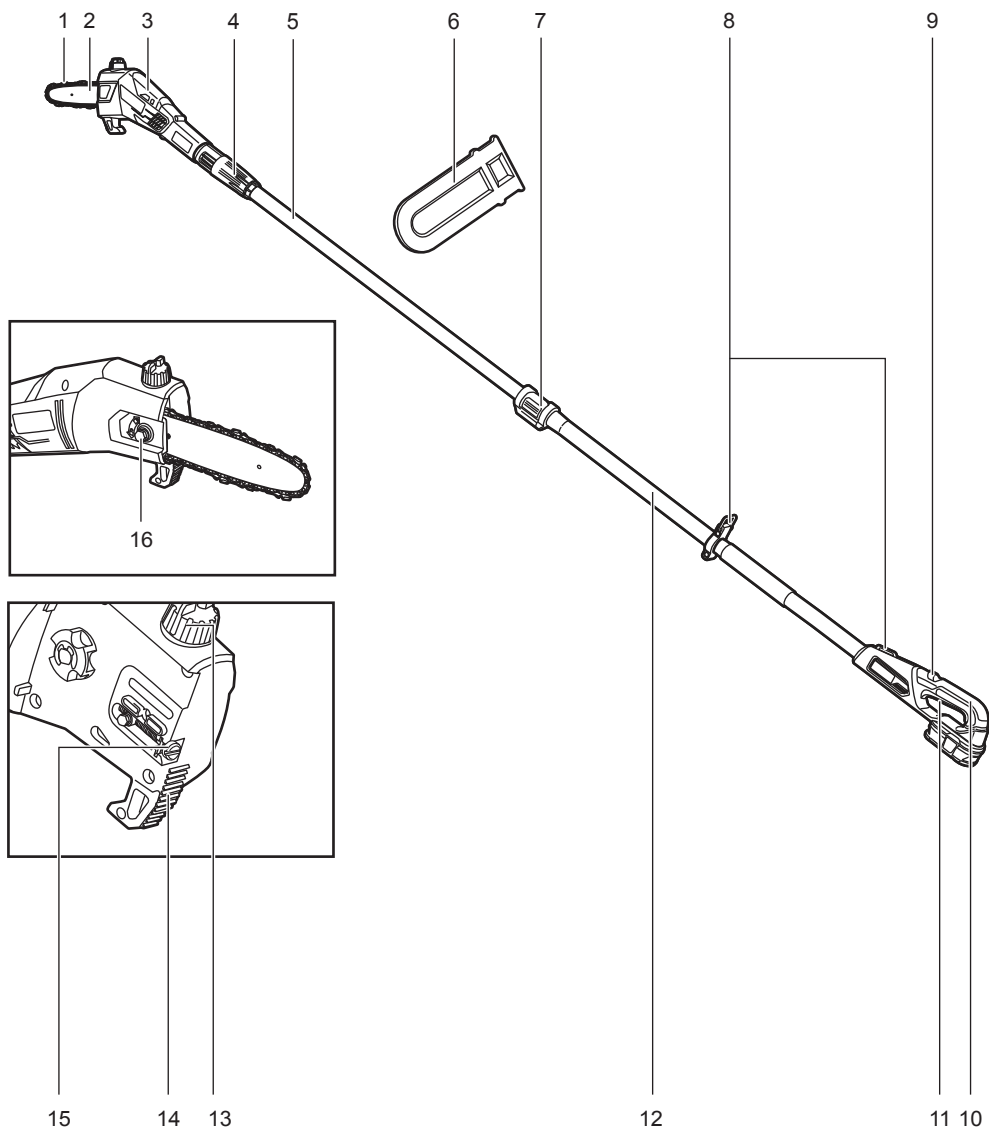
- Study the condition of the tree and branches before starting work. If there are signs of damage, rot or decay, do not attempt to prune yourself. Damaged or rotten branches are highly unstable. Seek the services of a professional tree surgeon.
- Never stand under the branch to be pruned.
- Pruned branches do not always fall cleanly to the ground. They are easily caught and deflected by other foliage. Ensure that a safety zone at least twice the length of the branch to be cut is available and maintained during your pruning. If this is not possible, seek the services of a professional tree surgeon.
- Ensure that the falling branch is not a danger to yourself, bystanders or property, including utility cables.
- Never operate the product with the pole at an angle of greater than 60° from the horizontal.
- Never operate the product with the cutting means closer than 10 m from overhead power lines.
- Do not force the product, let the chain do the work at its own speed.
- Do not try to cut the branch too close to the tree trunk. Leave about 15 cm from the trunk to the cut.
- Rest the saw bar on the branch to be pruned and push the saw gently forwards so that the ribbed bumper also contacts the branch. This will aid stability, cutting, and provide cleaner cuts.
- Small and thin branches that are not heavy can be cut with one cut using the bottom of the saw bar.
- Branches with larger diameter and are heavier may break or split during the cut so the user must make a first cut from under the branch using the top of the saw bar. The first cut should be approximately one-third of the way through the branch.
- Consider pruning large branches in manageable sections rather than as a whole.
- Never try to restart a previous cut with the chain and bar in the earlier cut. Always start a new cut. This will reduce the risk of kickback and potential injury.

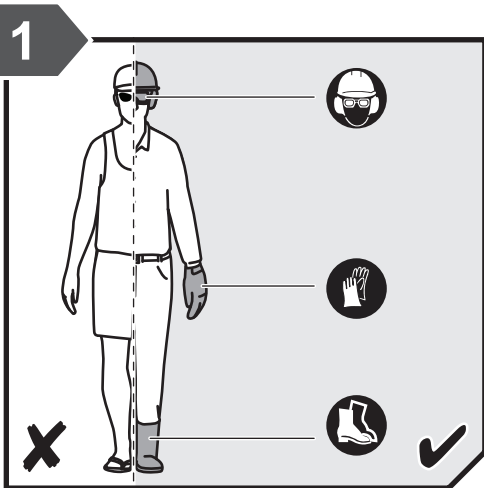
WHAT'S IN THE BOX



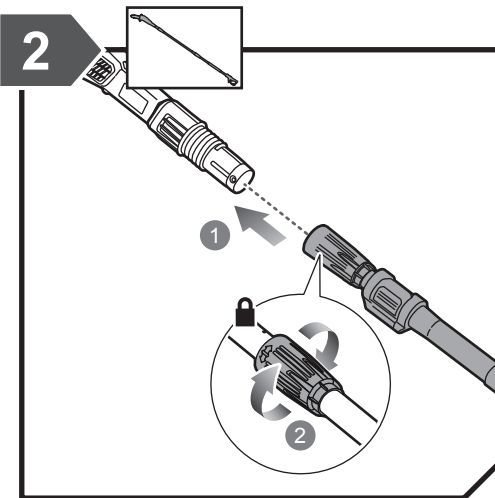
KNOW YOUR PRODUCT

- | | | | |
|----------------------|-----------------------|--------------------------|--------------|
| 1. Chain | 6. Chain cover | 11. Throttle trigger | 16. Bar bolt |
| 2. Bar | 7. Telescoping collar | 12. Front handle | |
| 3. Pruner attachment | 8. Strap hanger | 13. Chain oiler tank cap | |
| 4. Shaft coupling | 9. Lock out trigger | 14. Spiked bumper | |
| 5. Extension shaft | 10. Rear handle | 15. Tensioning screw | |

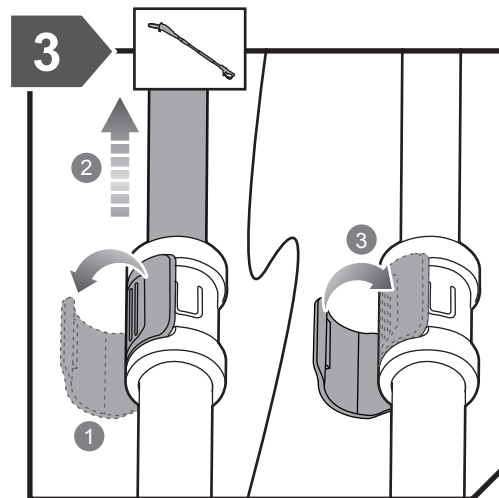




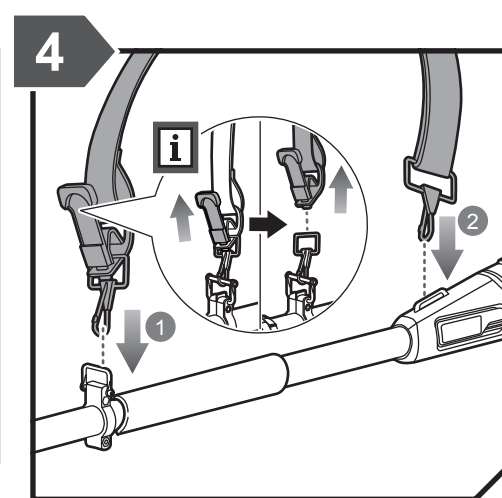
Always wear safety goggles or safety glasses with side shields when operating the product. Failure to do so could result in objects being thrown into your eyes resulting in possible serious injury. When handling the pruner assembly, wear non-slip, heavy-duty protective gloves. Wear non-skid, protective footwear that will protect your feet and improve your footing on slippery surfaces.



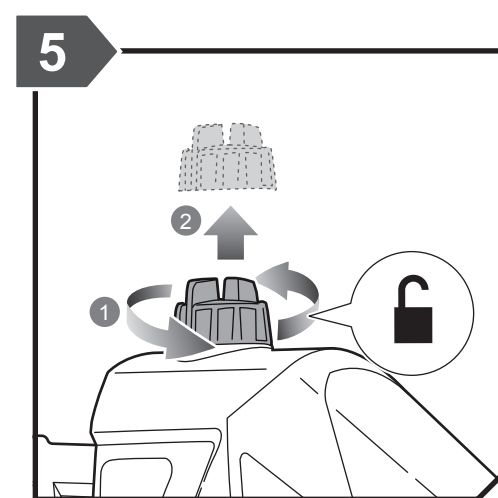
Install the shaft to the pruner attachment through the shaft coupling. Tighten the shaft coupling to secure the attachment.



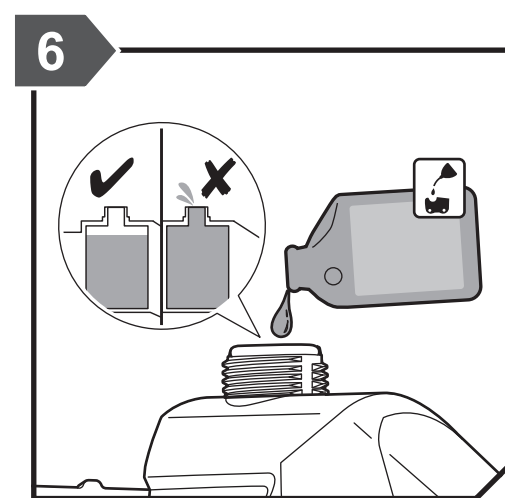
Release the telescoping collar to adjust the shaft. Once the shaft is adjusted, secure the telescoping collar to its place.



Attach the shoulder strap hanger.

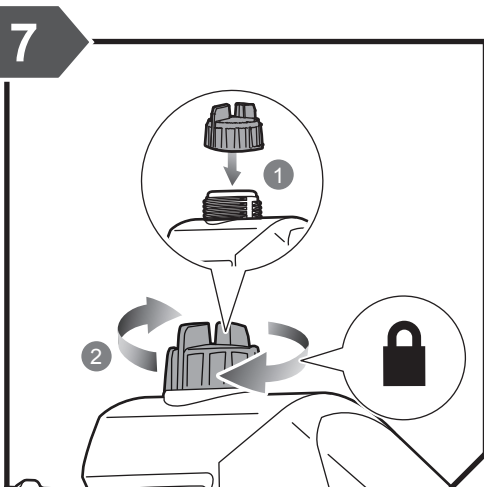


Loosen and remove the oil cap.

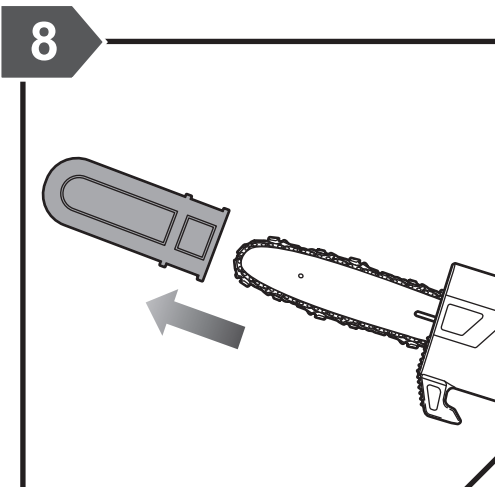


Add bar and chain lubricant in the bar lube reservoir for automatic bar and chain lubrication.

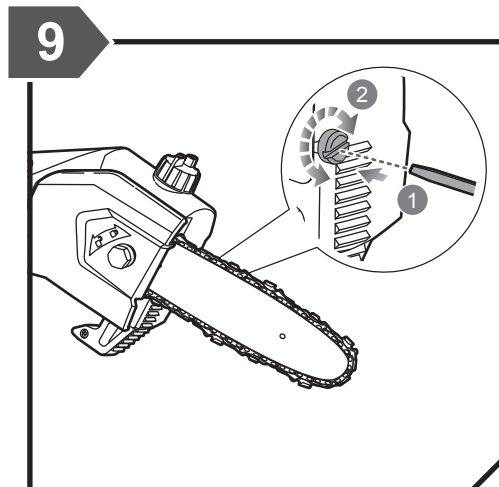
NOTE: Use chain and bar oil only. Other oils will not stick to the chain properly and will result in damage to the chain and bar.



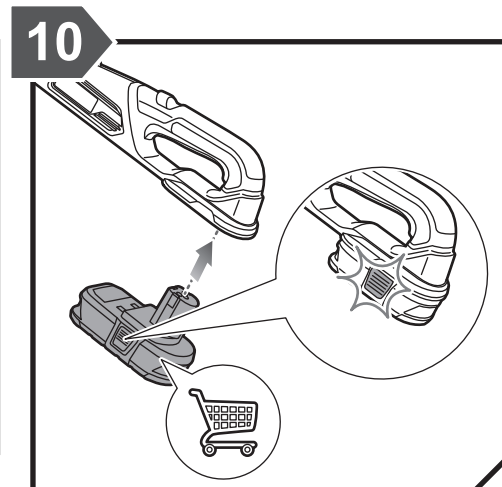
Place the oil cap and tighten securely.



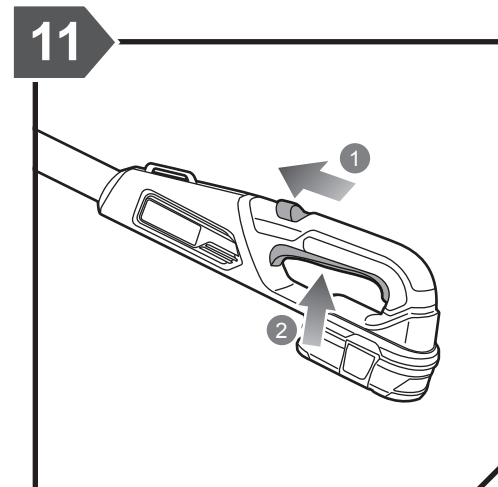
Remove the scabbard from the chain bar.



Adjust the chain tension using the allen wrench.

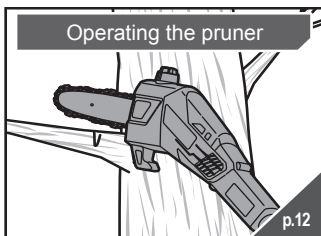


Insert the battery until the battery clicks into place.

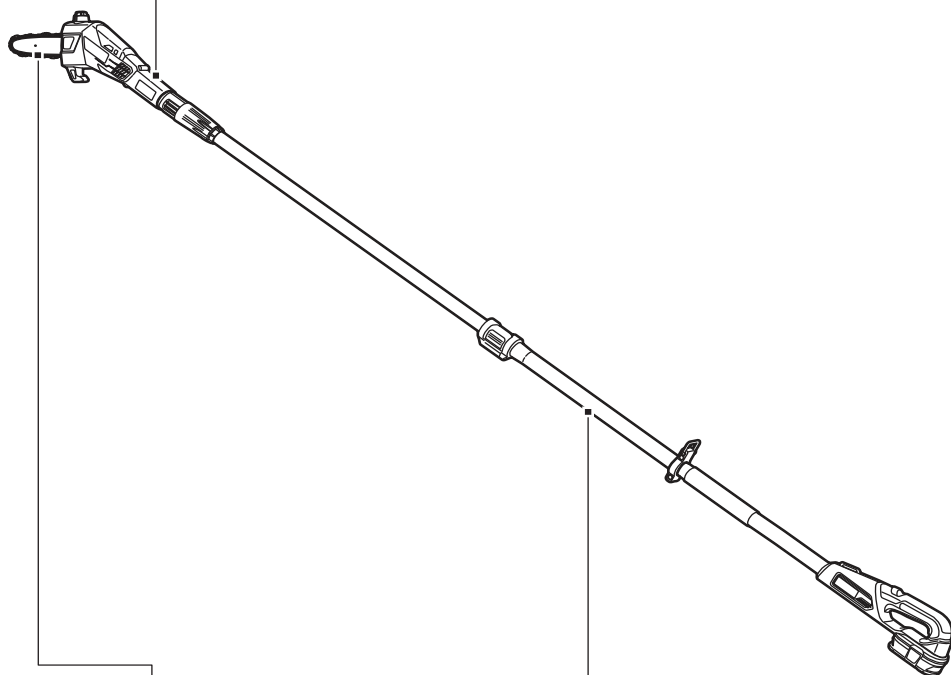
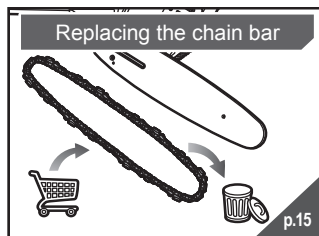


Slide the lock out trigger forward and squeeze the throttle trigger.

Operating the pruner



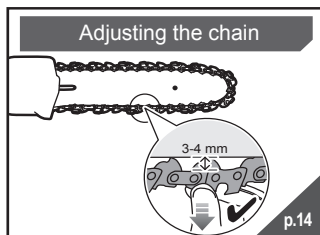
Replacing the chain bar



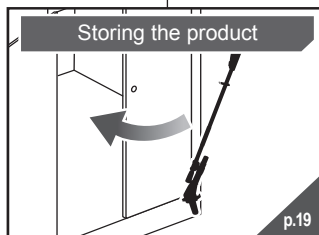
Cleaning the product

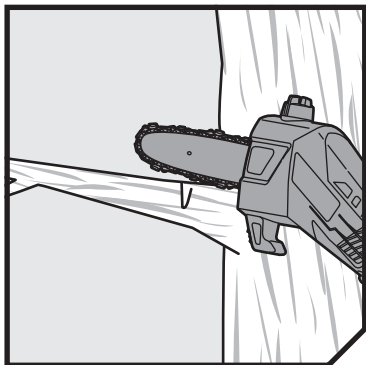


Adjusting the chain



Storing the product





OPERATING THE PRUNER

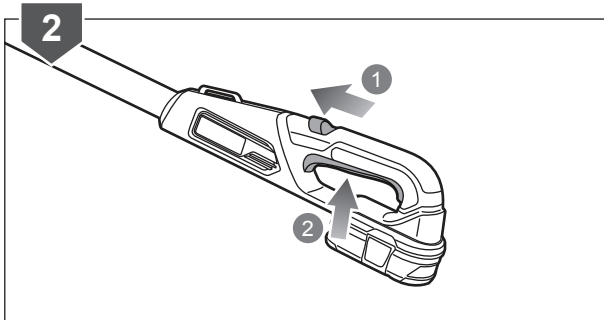
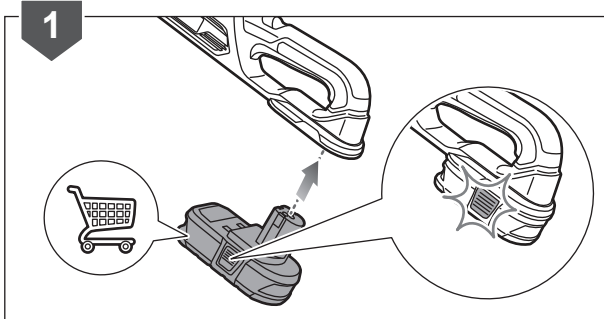
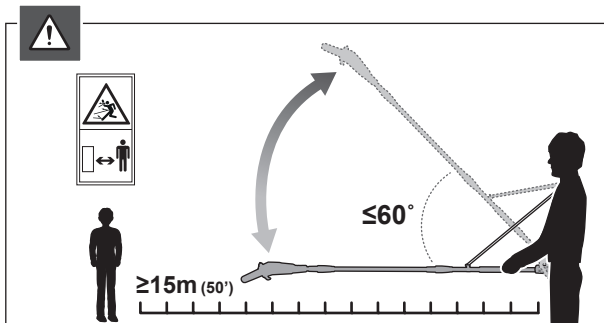
WARNING: DANGER! Risk of electrocution! Do not operate within 10 m of overhead electrical power lines. Position the product at an angle of 60° or less, depending on the specific situation. Keep bystanders at least 15 m away.

WARNING: Ensure that the chain and bar oil has been added to the reservoir before use.

WARNING: Do not cut from a ladder; this is extremely dangerous. Leave this operation to professionals.

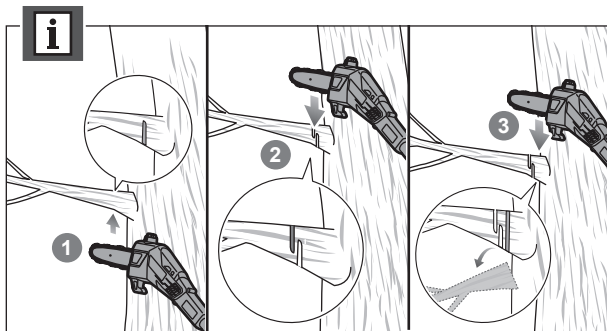
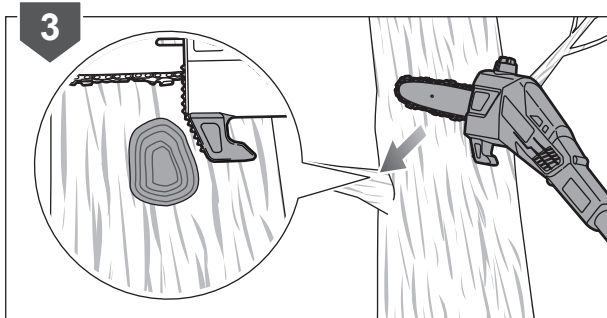
WARNING: Maintain a proper grip on the product whenever the motor is running.

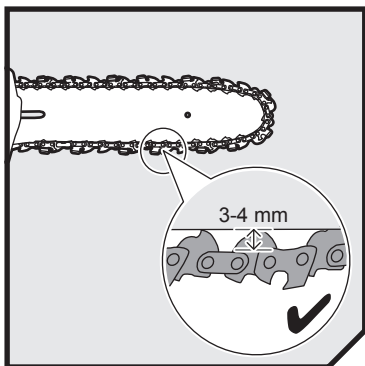
1. Insert the battery pack until it clicks into place.
2. Slide the lock out trigger forward and then squeeze the throttle trigger to start operating the product.
3. Make sure to position the spike bumper to the main limb or trunk before making the



cut.

NOTE: Make a shallow first cut (1/4 of limb diameter) on the underside of the limb close to the main limb or trunk. Then, make a second cut from the top side of the limb outboard from the first cut. Lastly, make a final cut close to trunk. For second and final cuts (from top of limb or branch), hold the bucking spikes against the limb being cut. Allow chain to cut for you; exert only light downward pressure.





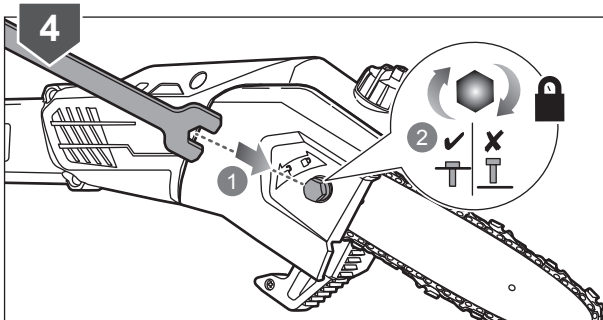
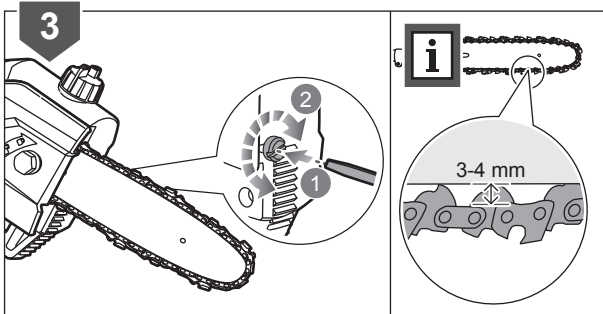
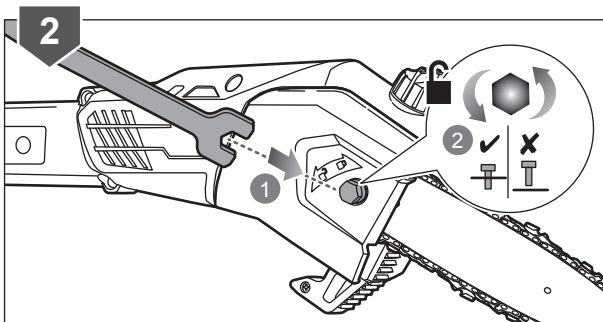
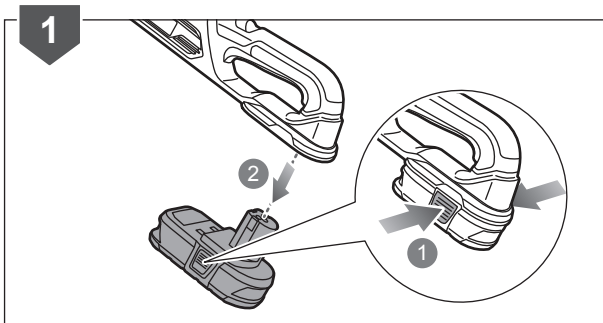
ADJUSTING THE CHAIN

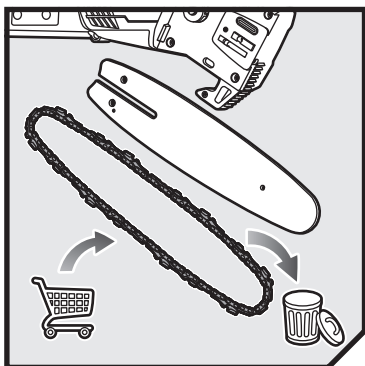
1. Turn off the product and then remove the battery pack.
2. Using the allen key wrench, loosen the bar bolt of the drive case.
3. Lift the tip of the bar up to check for sag. Release the tip of the bar, and turn the chain tensioning screw 1/2 turn clockwise. Repeat until sag does not exist.

NOTE: Hold the tip of the bar up and tighten the bar bolt securely. The chain tension is correct when the gap is about 3-4 mm. Since the chain will stretch when it heats up, then it is recommended that the chain tension must be checked regularly in use.

NOTE: If the chain is too tight, it will not rotate. Loosen the bar bolt slightly and turn chain tensioning screw 1/4 turn counterclockwise. Lift the tip of the bar up and re-tighten bar bolt

4. Fully tighten the bar bolt and drivecase cover. Bar bolt should have at least 4 turns after finger tight.

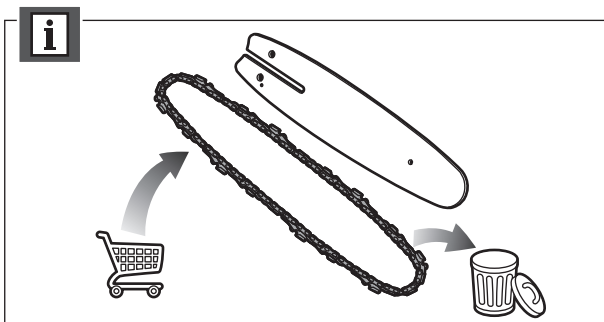
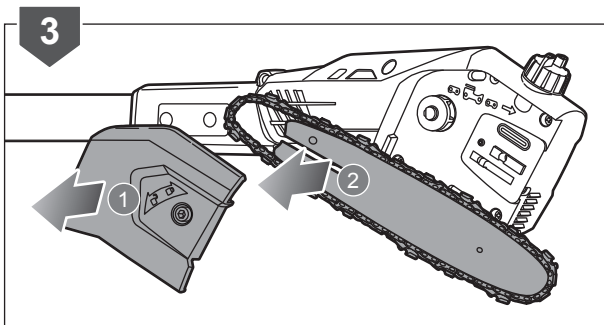
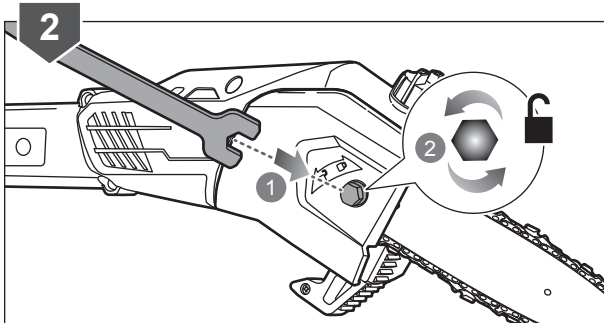
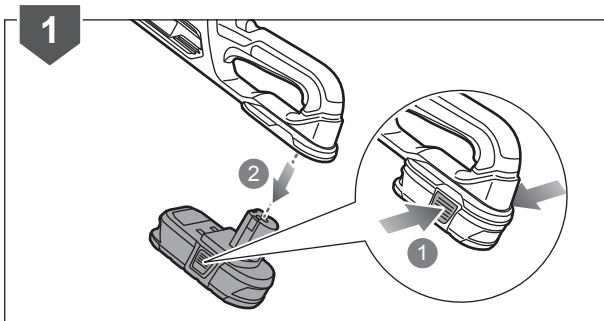




REPLACING THE CHAIN BAR

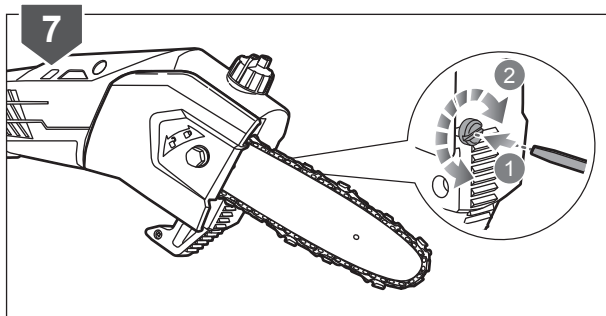
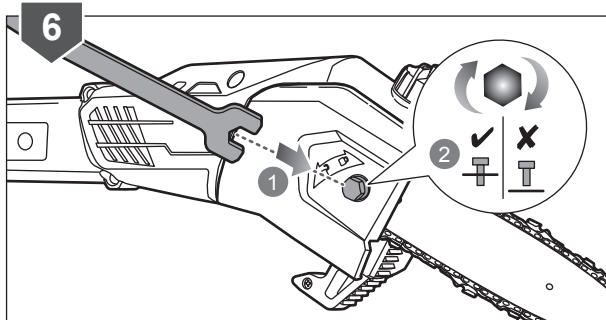
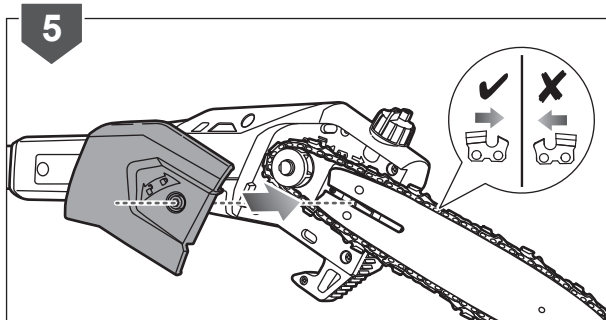
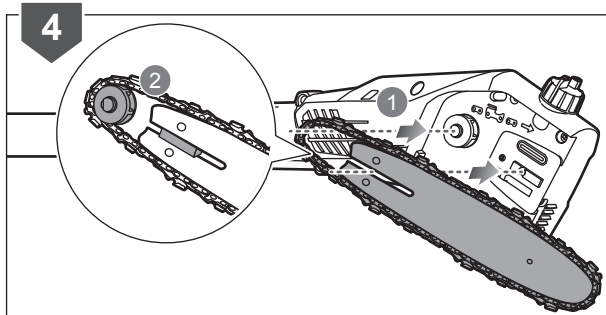
1. Turn off the product and then remove the battery pack.
2. Using the allen key wrench, remove the bar bolt from the drivecase cover.
3. Remove the drivecase cover, and chain bar.

NOTE: Prepare the chainbar. Make sure the chain follows the correct direction as shown.



4. Place the chainbar into the bar stud so the chain tensioning pin fits into the chain tensioning pin hole. Fit the chain over the sprocket and into the bar groove. The cutters on the top of the bar should face toward the bar tip, in the direction of the chain rotation.
5. Replace the drive case cover and install the bar bolt.
6. Using the allen key wrench, tighten the bar bolt, finger tight only. The bar must be free to move for tension adjustment.
7. Remove all slack from chain by turning the chain tensioning screw clockwise, assuring that the chain seats into the bar groove during tensioning.

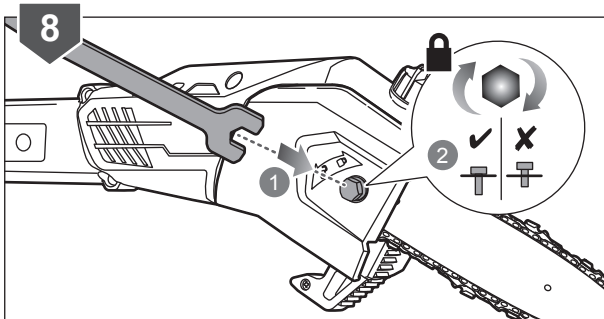
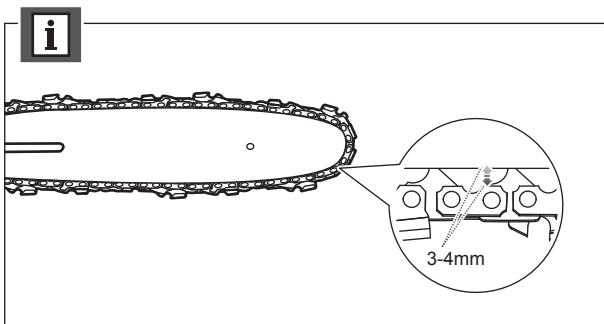
Lift the tip of the bar up to check for sag. Release the tip of the bar, and turn the chain tensioning screw 1/2 turn clockwise. Repeat this process until sag does not exist.

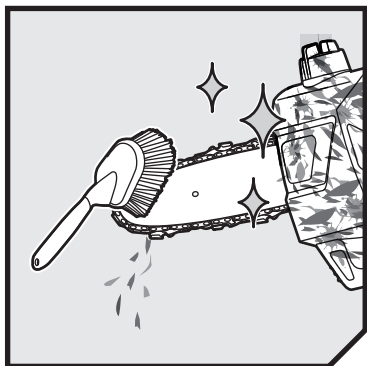


NOTE: Hold the tip of the bar up and tighten the bar bolt securely. The chain tension is correct when the gap is about 3-4 mm.

NOTE: If the chain is too tight, it will not rotate. Loosen the bar bolt slightly and turn chain tensioning screw 1/4 turn counterclockwise. Lift the tip of the bar up and retighten bar bolt

8. Fully tighten the bar bolt and drive case cover. Bar bolt should have at least 4 turns after finger tight.

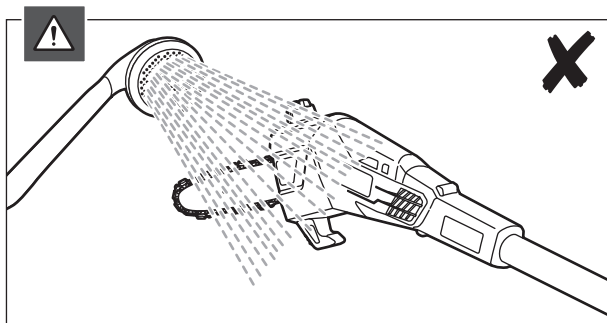
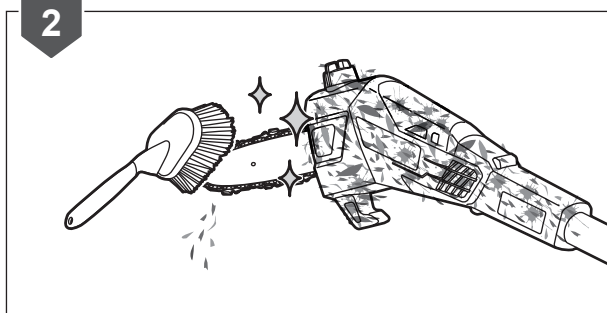
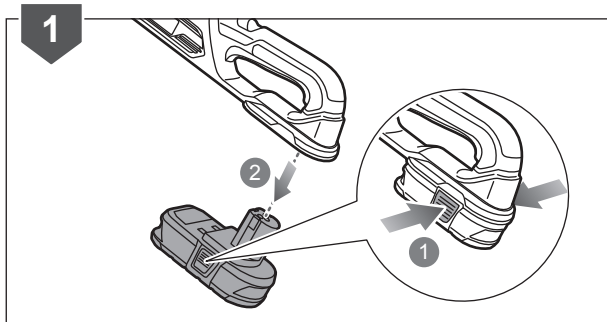


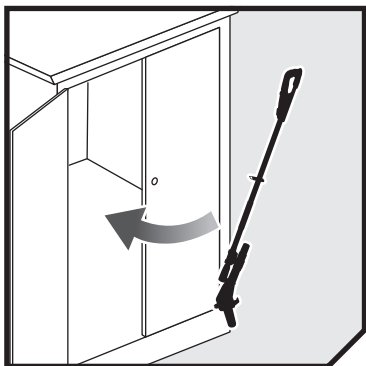


CLEANING THE PRODUCT

1. Turn off the product and then remove the battery pack. Allow it to cool down before cleaning.
2. Clean all foreign materials from the product using a soft brush or cloth.

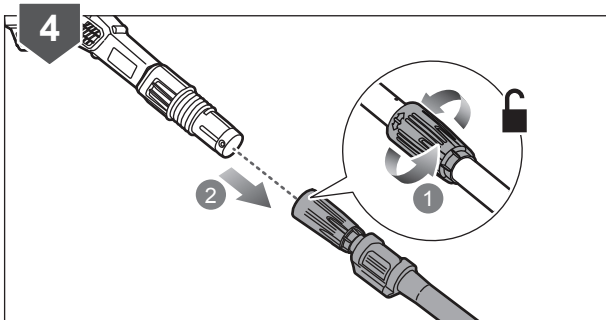
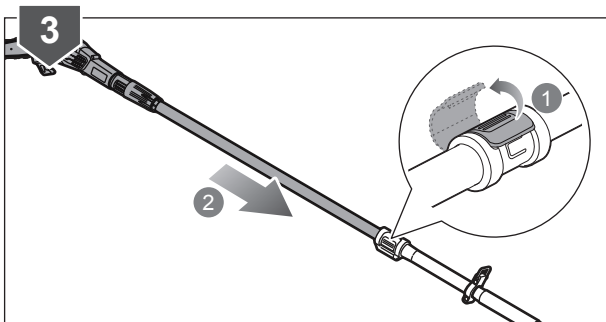
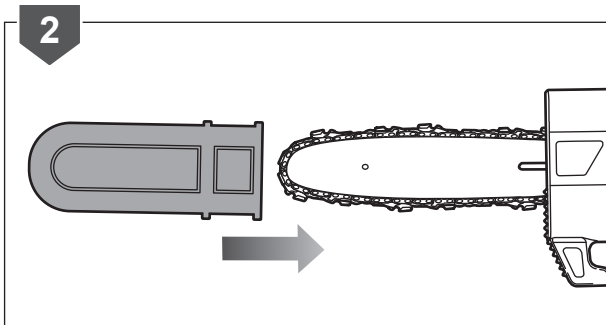
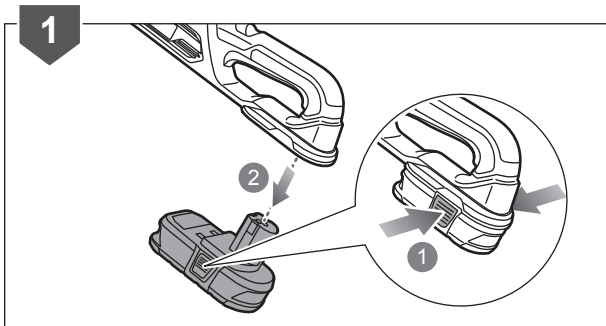
WARNING: Keep away from corrosive agents such as garden chemicals and de-icing salts.





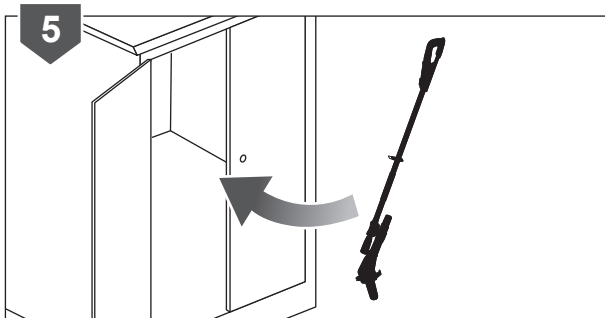
STORING THE PRODUCT

1. Turn off the product and then remove the battery pack. Allow it to cool down, and make sure the product is clean before storing.
2. Cover the cutting blade with the scabbard.
3. Release the telescoping collar to retract the upper shaft.
4. Loosen the shaft coupling to remove the pruner attachment from the shaft.



STORAGE

5. Store the product in a cool, dry, and well-ventilated place that is inaccessible to children. Keep away from corrosive agents such as garden chemicals and de-icing salts. Do not store outdoors.



PRODUCT SPECIFICATIONS

Cordless pole pruner

Model OPP1850

Voltage 18 V

No load chain speed 5.5 m/s

Bar length 200 mm / 8 inch

Chain pitch 0.375 inch

Chain gauge 0.043 inch

Chain drive links 33

Weight with battery pack 4.2 kg

Maximum reach 2.9 m

Cutting capacity 150 mm

Vibration level (in accordance with ISO 22867)

Front handle (with/without telescoping shaft) 1.0 m/s² / 1.0 m/s²

Rear handle (with/without telescoping shaft) 1.0 m/s² / 1.1 m/s²

Uncertainty of measurement 1.5 m/s²

Noise emission level (in accordance with ISO 22868)

A-weighted sound pressure level at the operator's position 77.1 dB (A)

A-weighted sound power level 93.0 dB (A)

Uncertainty of measurement 2.5 dB

BATTERY AND CHARGER

Model OPP1850

Battery Pack N/A

Charger N/A

Compatible Battery Packs RB18L13, RB18L26, RB18L15, RB18L15A, RB18L15B, RB18L25, RB18L25A, RB18L25B, RB18L40, RB18L40A, RB18L50, RB18L50A, RB18L20, RB18L20A, RB18L30, RB18L30A, RB18L60, RB18L60A, RB18L90, RB18L90A

Compatible Chargers BCL-1800, BCL1418, BCL1418IV, BCL1418IH, BCL14183H, BCS618G, RC18150U, RC18627, RC18115, RC18120, RC18150

CHAIN AND BAR INFORMATION

Manufacturer TRILINK

Saw chain model CL14333XPB

Guide bar model M1430833-104IHL

NOTE: Chain must be fitted with bar from the same manufacturer according to above combinations.

REPLACEMENT PARTS

When possible, use matching brands of bar and chain for optimum performance.

Parts	Manufacturer	Type
Chain	TRILINK	CL14333XPB
Guide bar	TRILINK	M1430833-104IHL

VIBRATION LEVEL

WARNING

The declared vibration value has been measured with a standard test method and may be used to compare one tool with another.

The declared vibration value may be used in a preliminary assessment of exposure.

The vibration emission during actual use of power tool can differ from the declared total value depending on the ways in which the tool is used.

Identify safety measures to protect yourself based on an estimation of exposure in the actual conditions of use, taking account of all parts of the operating cycle such as the times when the tool is switched off and when it is running idle in addition to the trigger time.



*RYOBI is a trademark of Ryobi Limited,
and is used under license.
TRILINK is a registered trademark of
Trilink Saw Chain, LLC.*

Techtronic Industries (Australia) Pty. Ltd.
31 Gilby Road, Mount Waverley, VIC 3149
Melbourne, Australia

Techtronic Industries New Zealand Ltd.
2 Landing Drive, Mangere
Auckland, 2022, New Zealand