



## Acrylic Bath Collection Specifications



Rick McLean's  
**DESIGNER**  
BATHWARE

## WARRANTY

Any claim under this warranty must be made within 2 years of the date of purchase of the product. To make a claim under the warranty, take the product with your proof of purchase to the store where you purchased the product or contact Rick McLean's Designer Bathware. Warranty claims will only be valid under the following;

Applicable only with a valid Receipt

2 year Repair or Replacement Warranty

Warranty covers manufacturing fault or defect

*Does not cover;*

Does not cover Glass which cannot be warrantied

Does not cover misuse, abuse, wear & tear or incomplete return of product

Rick McLean's Designer Bathware will pay your reasonable, direct expenses of claiming under this warranty. You may submit details and proof of your expense claim to Rick McLean's Designer Bathware for consideration.

Rick McLean's Designer Bathware plumbing products must be installed by a qualified plumber. Failure to do so will void warranty. Certificate of Compliance from your plumber will be required for any warranty claim.

The warranty is given by Rick McLean's Designer Showerscreens (Aust) P/L ABN 57 106 278 997  
T/A Rick McLean's Designer Bathware  
P. O. Box 232, Niddrie, VIC 3042  
Ph; 1300 662 221, Fax 03 9331 6233, [sales@rickmcleans.com.au](mailto:sales@rickmcleans.com.au)

This warranty is provided in addition to other rights and remedies you have under law; Our goods come with guarantees which cannot be excluded under the Australian Consumer Law. You are entitled to replacement or refund for a major failure and to compensation for other reasonably foreseeable loss or damage. You are also entitled to have the goods repaired or replaced if the goods fail to be of acceptable quality and the failure does not amount to a major failure.

**Please Note:**

Modern Acrylic Freestanding Baths have adjustable metal feet, these are designed to support the weight of the baths when filled with water.

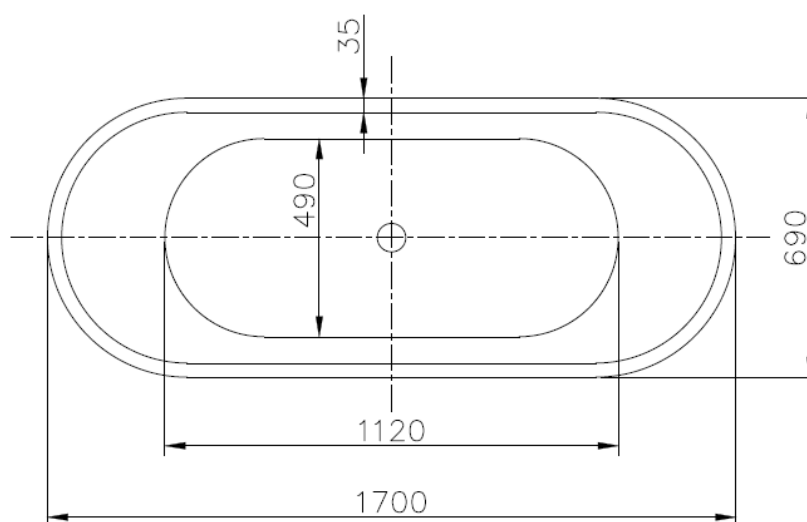
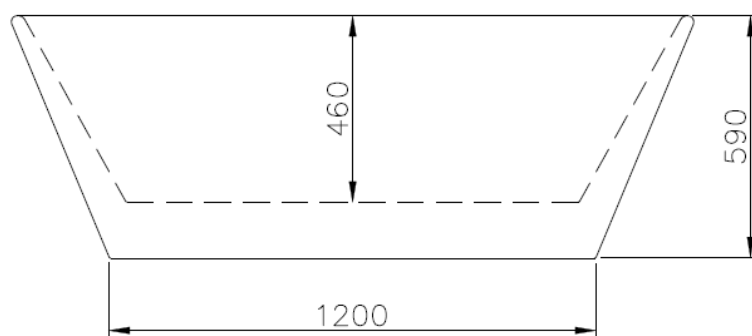
To ensure that the feet are properly supporting the bath a small gap should be visible between the sides of the bath and the floor. Silicone may be used to seal between the bath and the floor but this is optional.

Modern Acrylic Freestanding Baths are not supplied with a waste plug or plumbing fittings. These baths require a 40mm waste outlet and will need to be purchased separately from your plumbing retailer.

All Rick McLean's Freestanding Baths are to be installed by a qualified plumber. Failure to do so will void warranty.

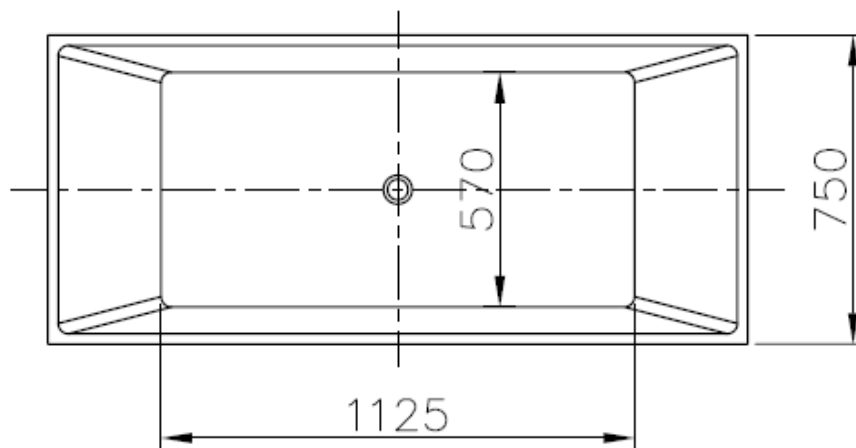
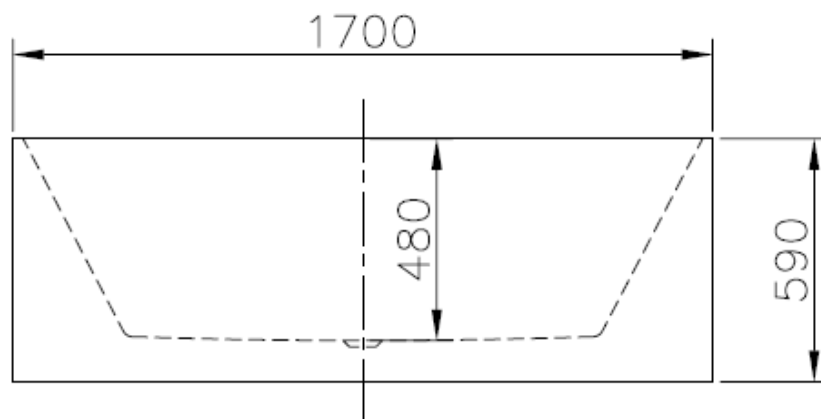
A Certificate of Compliance from your plumber will be required for any warranty claim.

## Modern FB1 - 4820794



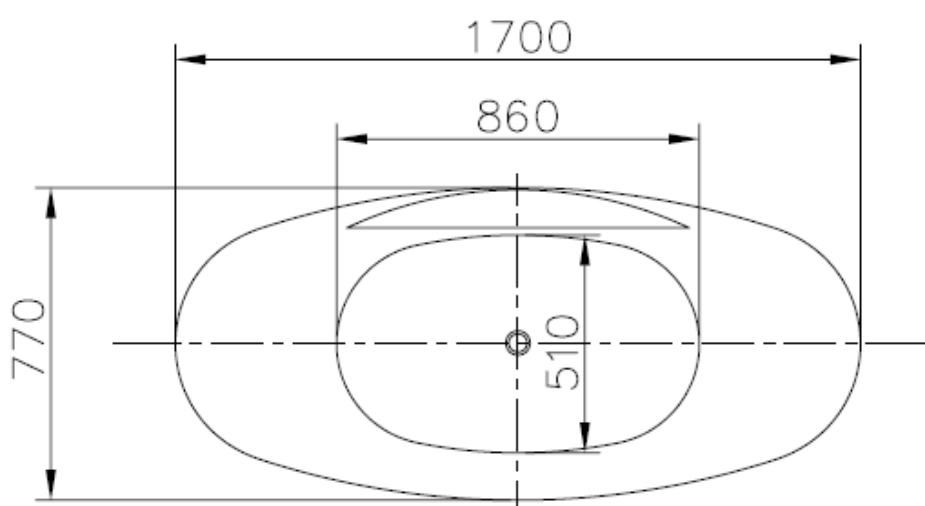
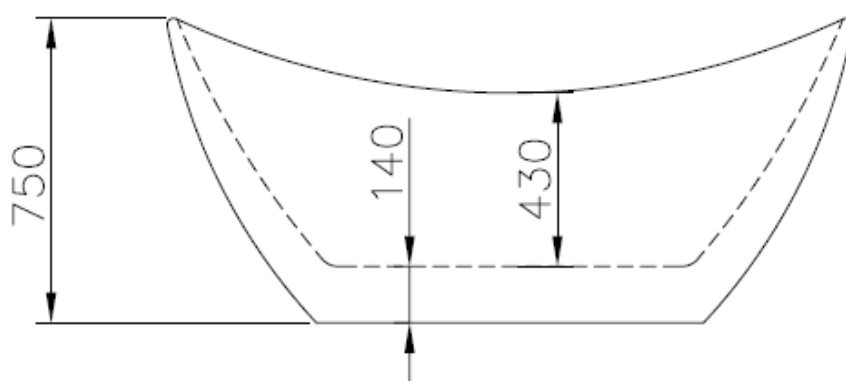
Net weight / gross weight	Packaging measurements	Capacity
38KG / 45KG	1720 L x 600 H x 710 D	340L

## Modern FB2 - 4820795



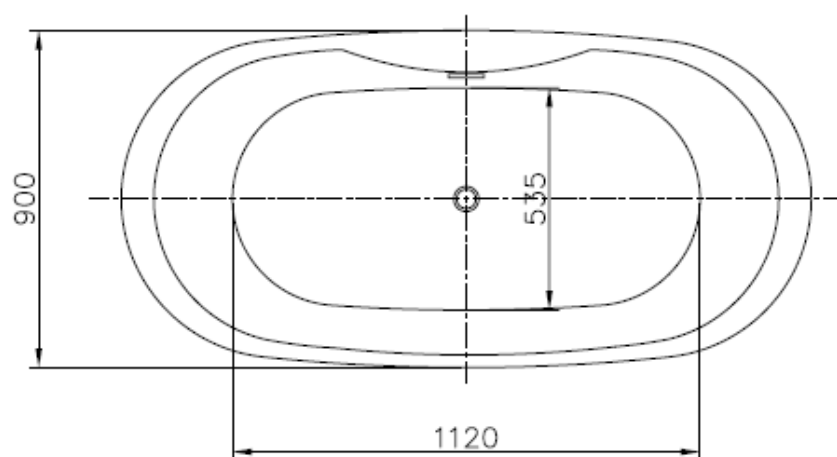
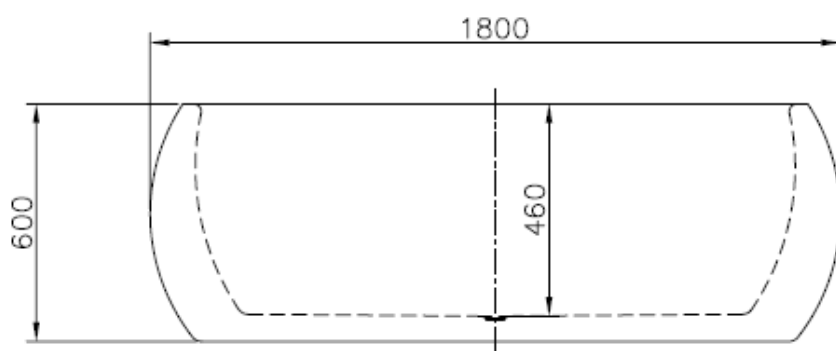
Net weight / gross weight	Packaging measurements	Capacity
59KG / 66KG	1710 L x 600 H x 780 D	380L

## Modern FB3 - 4820796



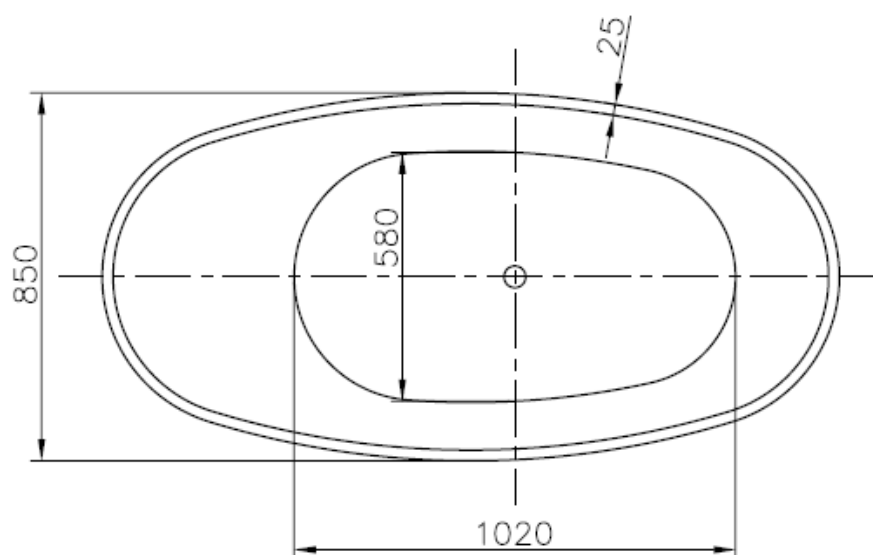
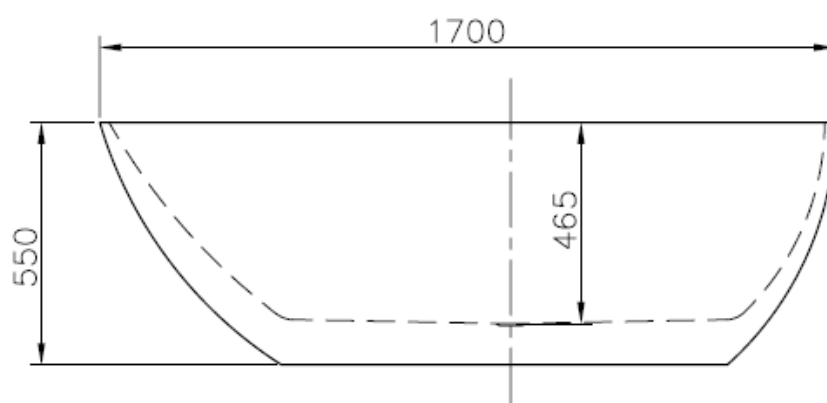
Net weight / gross weight	Packaging measurements	Capacity
40KG / 47KG	1730 L x 780 H x 770 D	300L

## Modern FB4 - 4890330



Net weight / gross weight	Packaging measurements	Capacity
46KG / 53KG	1830 L x 620 H x 930 D	360L

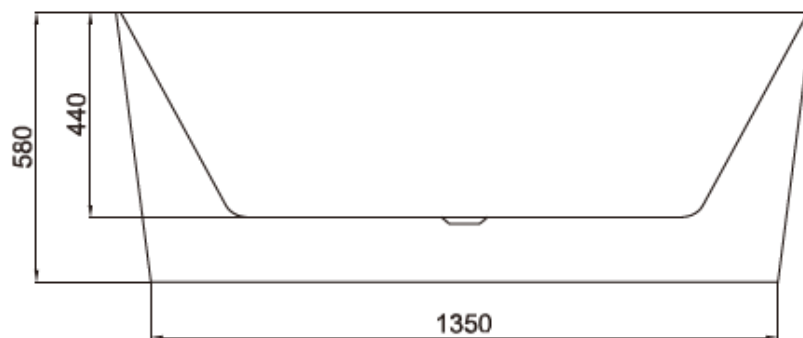
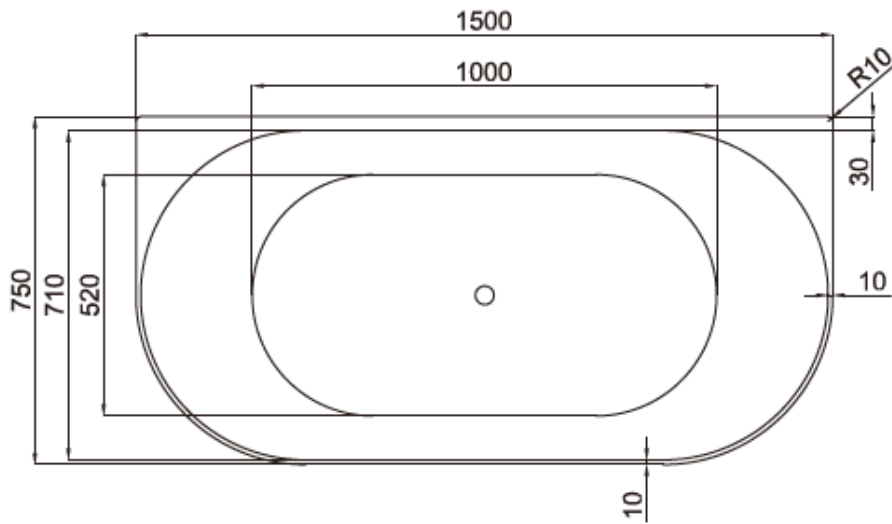
## Modern FB5 - 4822134



Net weight / gross weight	Packaging measurements	Capacity
42KG / 49KG	1720 L x 630 H x 880 D	370L

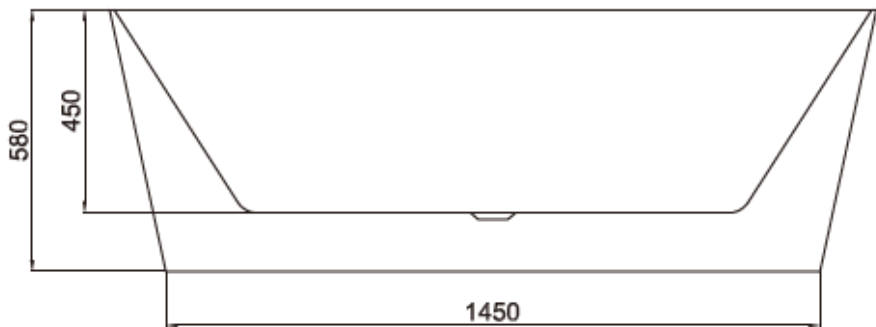
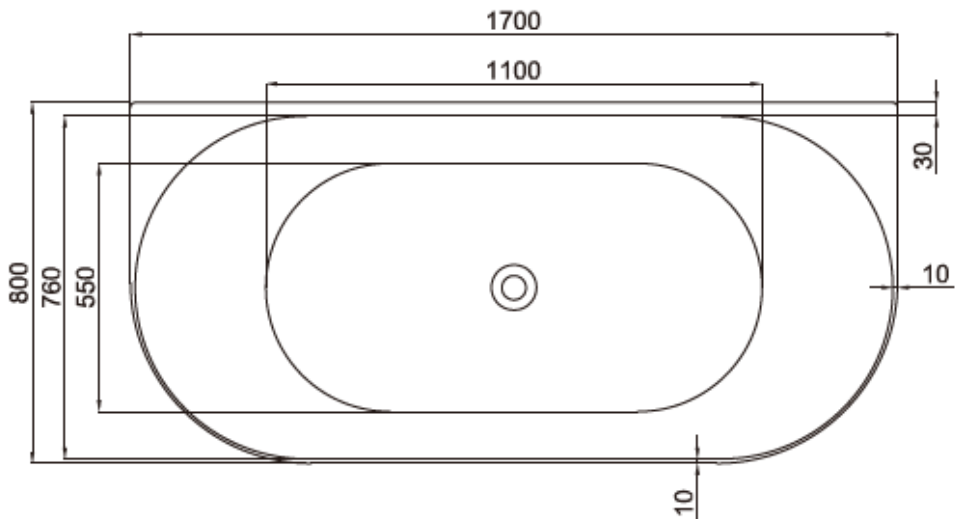


## Modern FB7 - 0097585



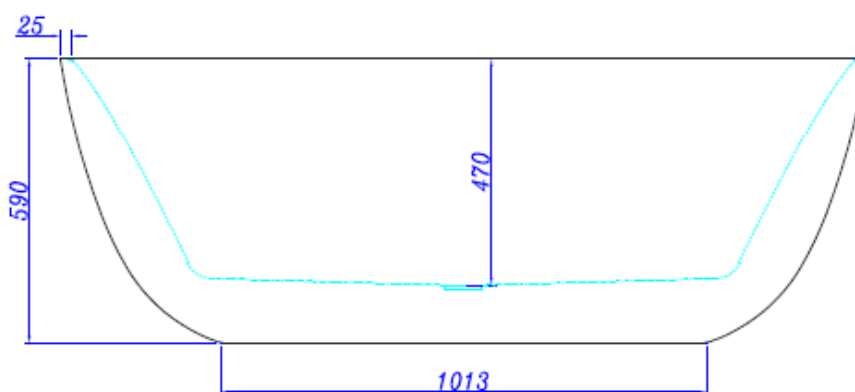
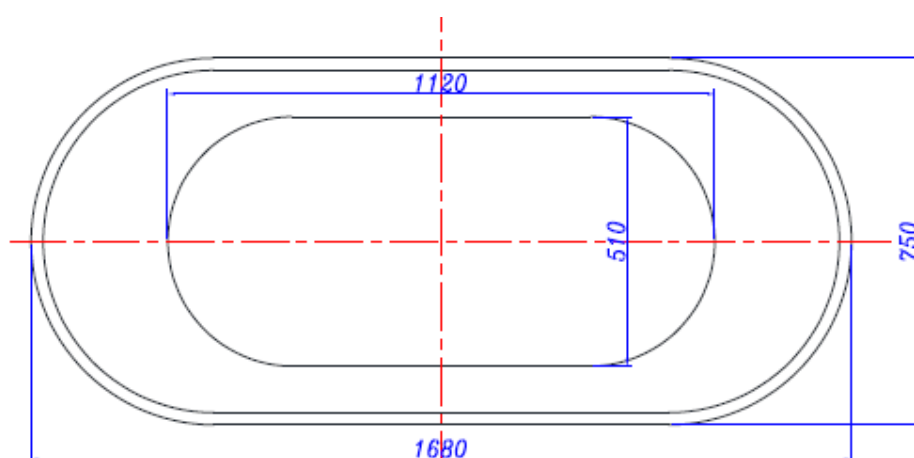
Net weight / gross weight	Packaging measurements	Capacity
40KG / 48KG	1530 L x 610 H x 770 D	214L

Modern FB8 - 0097585



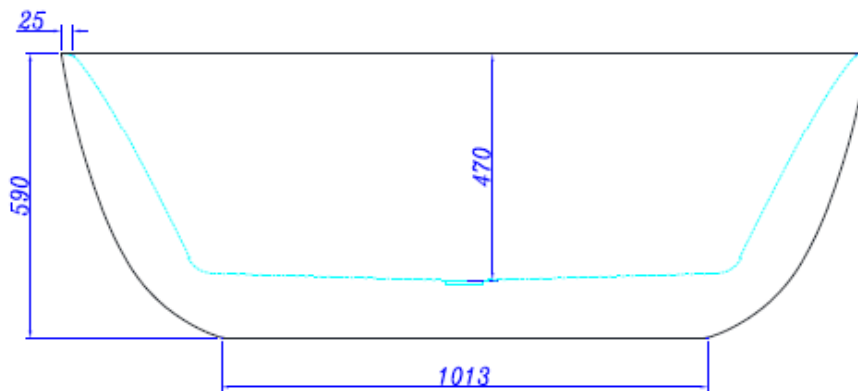
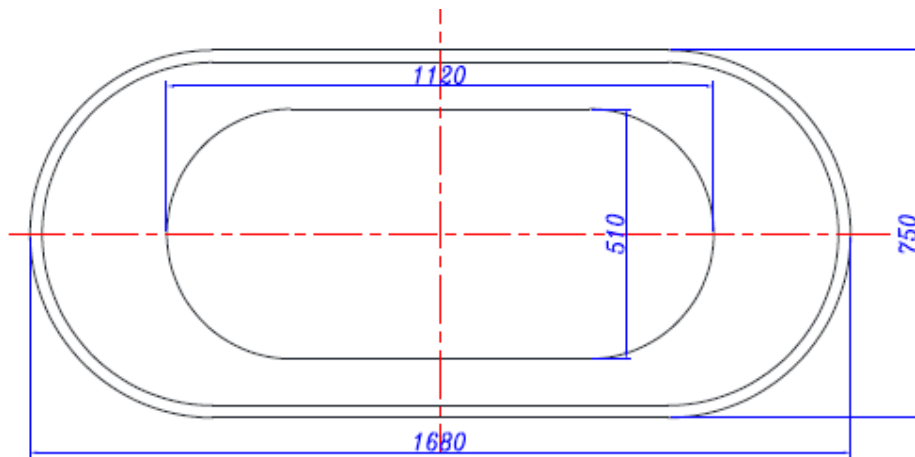
Net weight / gross weight	Packaging measurements	Capacity
45KG / 53KG	1730 L x 610 H x 830 D	276L

## Modern FB9 Gloss - 131874



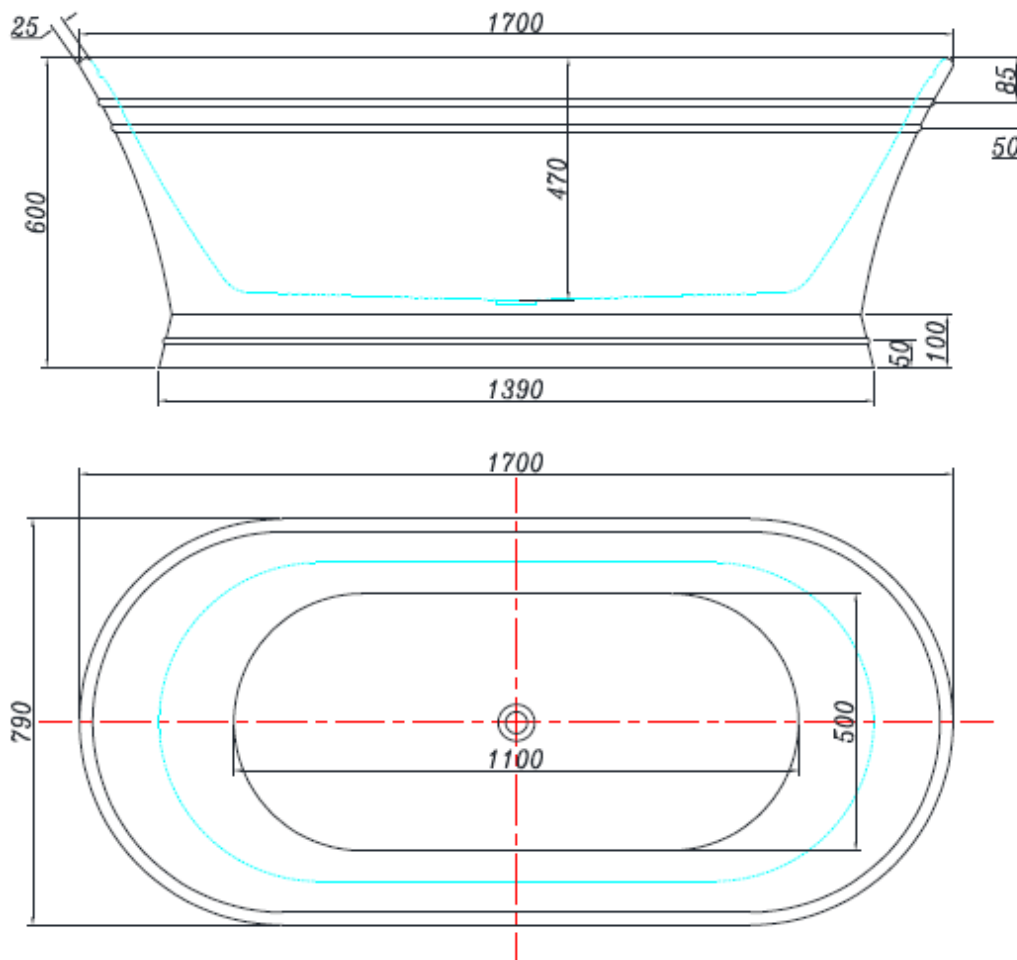
Net weight / gross weight	Packaging measurements	Capacity
38KG / 47KG	1710 L x 620 H x 780 D	290L

## Modern FB10 Matte - 131875



Net weight / gross weight	Packaging measurements	Capacity
38KG / 47KG	1710 L x 620 H x 780 D	290L

# Montauk - 131873



Net weight / gross weight	Packaging measurements	Capacity
47KG / 55KG	1740 L x 630 H x 820 D	320L