



# QUICKBOARD™ INSTALLATION GUIDE

1300 366 938

[www.permacomposites.com](http://www.permacomposites.com)

# TABLE OF CONTENTS

General Guidelines and Precautions	3
Components	4
Fixings	5
Expansion Table	5
Installation Guidelines	6
Butt Joints	7
Maintenance	7
Trims	8



You can download the guide by scanning the QR Code or visiting [www.permacomposites.com/brochure-installation-guide-library/](http://www.permacomposites.com/brochure-installation-guide-library/)



## GENERAL GUIDELINES AND PRECAUTIONS

### Read guide completely before commencing installation.

Correct installation of PermaTimber® QuickBoard™ will provide years of enjoyment. This product is a ceiling lining that is perfect for ceilings, eaves, interior patio and alfresco lining. Quick and easy installation with low maintenance.

Please ensure that you have read these instructions thoroughly prior to and during installation. Failure to adhere to the installation guidelines will void your warranty. PermaTimber® QuickBoard™ is not suitable for use in direct sunlight or where subject to strong reflective sunlight.

PermaTimber® QuickBoard™ panels are inspected for quality before packaging and shipping. Any defects or damages should be reported to the retailer immediately for inspection. We cannot accept responsibility for panels installed with defects.

The wood texture finish of PermaTimber® QuickBoard™ is similar to that of natural wood surfaces. We recommend laying out panels prior to installation in order to obtain a uniform overall finish.

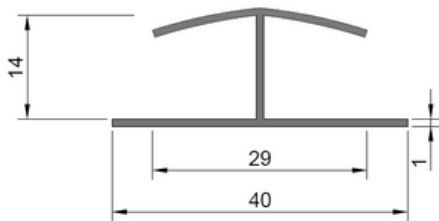
### Failure to adhere to the following points may void your warranty.

PermaTimber® warranty information can be found at <https://www.permatimber.com.au/get-started/warranty/>

- Installation must be completed in accordance with this guide and all instructions are to be read clearly prior to installation.
- PermaTimber® QuickBoard™ can vary slightly in colour. For large projects please ensure all materials are ordered together to guarantee that materials are from the same batch.
- PermaTimber® do not recommend mixing 2.4m and 4.8m packs in the same area of installation.
- The customer/ installer is responsible for inspecting each panel for colour, finish, size and other issues prior to installation.
- PermaTimber® QuickBoard™ can be installed under a steel roof, however a thermal barrier and a minimum gap of 300mm is required. If you have polycarbonate/ clear roof sheets, replace with tin or steel prior to installation.
- Failure to provide clearance gaps to allow for expansion and contraction will void your warranty.
- All fixing points near electrical sources should be safe and isolated from power. Use a licensed electrical contractor.
- This product is not suitable for exposure to direct or highly reflective sunlight.

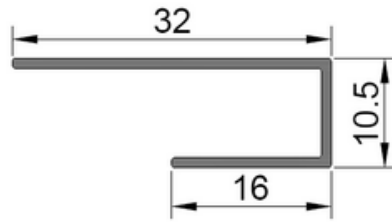
# COMPONENTS

H Joint Trim



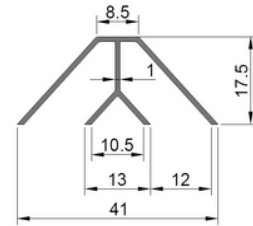
Used for butt joining long runs.

U Edge Trim



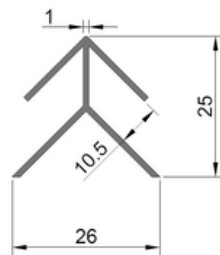
Used for neat edge finishes.

Internal Corner Trim



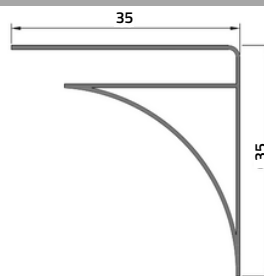
Used for internal corners.

External Corner Trim



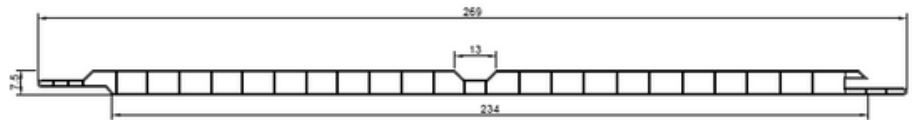
Used for external corners..

Corner Cove Trim



Used for neat edge finishes..

QuickBoard™



# CUTTING

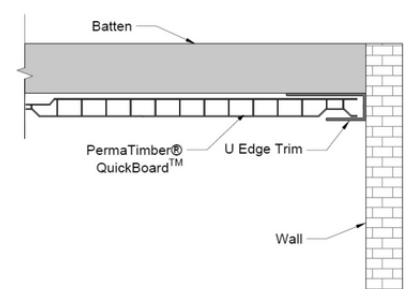
PermaTimber® QuickBoard™ panels can be cut along their width and length using basic wood working tools. (i.e. jigsaw with a fine-tooth blade or a fine-tooth drop saw). When measuring for cutting, allow 1mm per 1m length for expansion and contraction of panel across the end of each board.

Please ensure that PermaTimber® QuickBoard™ is not installed hard up against a rigid surface at the end of the board and allow a minimum gap. See *Expansion Table* on page 5 for minimum gapping requirements.

Make allowance for contraction and expansion depending on the temperature at the time of installation. Use PermaTimber® QuickBoard™ trims to cover the expansion gaps at ends and sides.

If ambient temperature is high, allow for a certain amount of expansion and contraction. See *Expansion Gaps* on page 5 for more information.

Cut outs for down lights and fans can be done with a hole saw going through the product slowly and steadily.



## FIXINGS

PermaTimber® QuickBoard™ should be fixed onto ceiling joists at no greater than 600mm centres. When fixing we suggest using the following:

### SCREWS & CLIPS

Needle point 6 or 8 gauge by 13mm counter sunk screws or equivalent.

### OPEN BEAM ROOF

It is recommended to install extra battens across sections with a longer span if ceiling battens are greater than 600mm apart.

Batten size will vary with each specific project.

## DOWN LIGHTS

Ensure entire working space is safe and isolated from power when working in close proximity to electrical sources.

We recommend using QuickBoard™ with LED down lights. This is due to LEDs tending not to overheat and warp the product.

Use a hole saw with hole cut greater than down light size to cut holes for lights.

Pair LED down lights with PermaTimber® QuickBoard™ for a sleek finish.

Light fittings should be installed according to manufacturers guidelines and by a licensed electrical contractor.

## EXPANSION TABLE

Depending on the temperature exposed, PermaTimber® QuickBoard™ will expand and contract linearly.

However, due to its unique material composition, the effect of these gaps are minimal.

i.e. only expands/ contracts 2.4mm/metre at over 40°C temperature change.

The unique tongue and groove method with special fixing clips mitigate expansion effects considerably. During installation, it is however important to take note of the ambient temperature and adjust expansion joints accordingly.

i.e. 4.8m panel installed at 20°C can expect to expand by 7mm when the ambient temperature reaches 45°C.

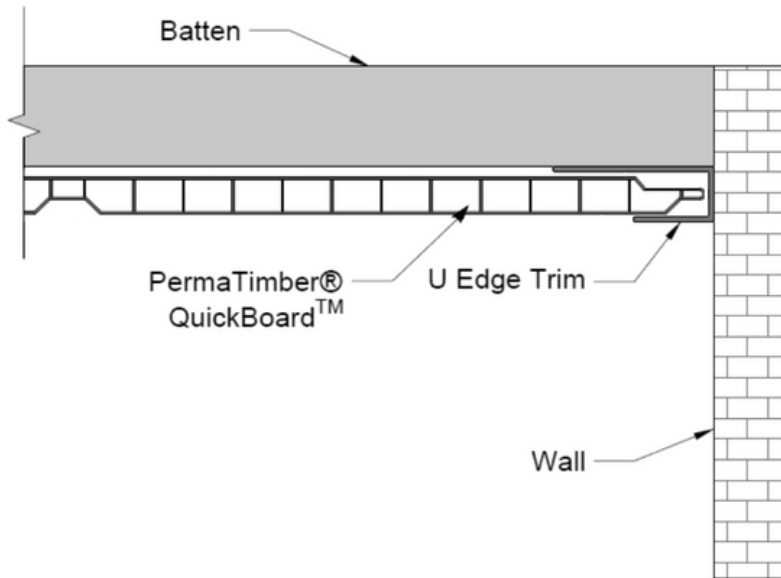
Please refer to the expansion table below before and during installation. **Failure to follow provided gap allowance for expansion/ contraction during installation will void your warranty.**

Gapping Requirements Per Metre	
Ambient Temperature (°C)	Expansion/ Contraction (mm)
45	1.5
40	1.2
35	0.9
30	0.6
25	0.3
20	0
15	-0.3
10	-0.6
5	-0.9
0	-1.2

# INSTALLATION GUIDELINES

## STEP ONE

Install the U Edge Trim or Corner Cove on the starting edge and one adjoining edge using recommended screws.

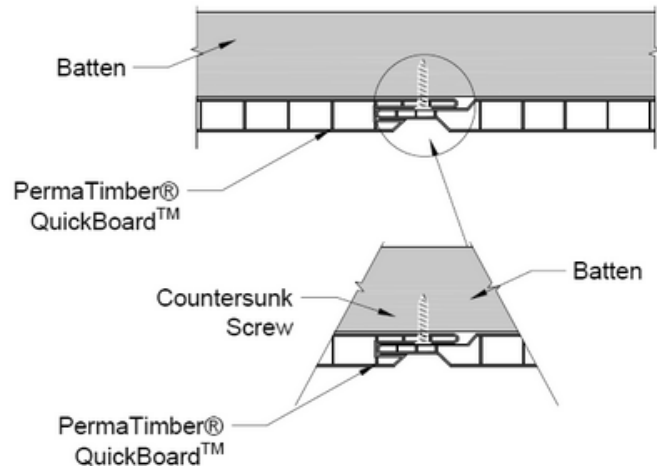


## STEP TWO

Slot the tongue edge into the trim allowing a 1mm gap for thermal expansion.

## STEP THREE

Fix PermaTimber® QuickBoard™ into place ensuring panels are screwed into the ceiling joists every 600mm. Slot tongue into the next panel.



## STEP FOUR

Continue the above process to join all PermaTimber® QuickBoard™ panels to the ceiling until you have covered the entire surface.

## STEP FIVE

Ensure your choice of trim is placed along the length of the panel before installing to the ceiling when fitting the last PermaTimber® QuickBoard™ panel.

## INSTALLATION GUIDELINES

### STEP SIX

Fix the last panel of PermaTimber® QuickBoard™ with screws.

---

### STEP SEVEN

Allow adequate space for installation of U Edge Trim to conceal the screws. Allow a 1mm gap for thermal expansion.

---

### STEP EIGHT

Cut U Edge Trim into an L shape and glue down with a suitable builders PVC tolerant construction adhesive to fix the last panel in place (gluing should only happen for the last panel, the rest of the panels should be screwed).

---

### STEP NINE

It is recommended to support trim with painters tape until glue has dried on the last panel.

---

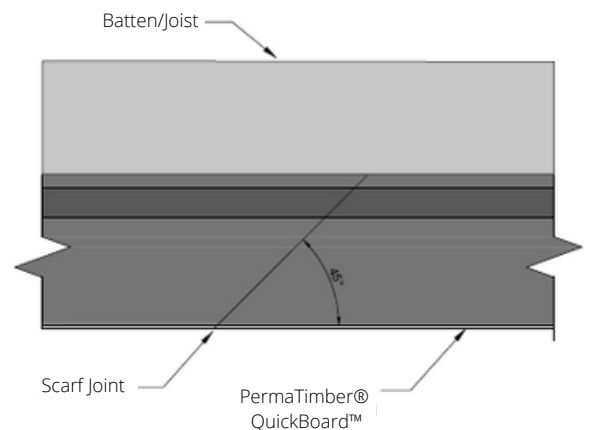
### STEP TEN

Carefully remove painters tape and enjoy your new look.

## BUTT JOINTS

H-Joints can be used to join panels in longer runs and need to be all in one line. The use of a butt joint on the panels is possible, however, ensure the join is on a batten. A clean straight cut is required for a straight joint or alternatively a 45° scarf cut can be used.

Note that a maximum of 1 butt can be used per run. A H-Joint is required if there are more joins.



## MAINTENANCE

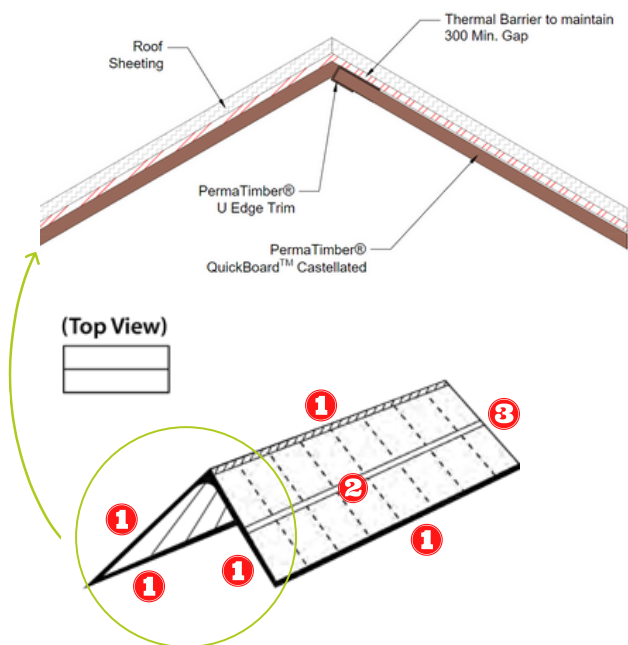
PermaTimber® QuickBoard™ does not require any ongoing maintenance. If needed, product can be cleaned with a damp cloth or washed off with a low pressure hose. **Do not use pressure hose/ sprayer.**

# TRIMS

PermaTimber® QuickBoard™ can be used for different applications. In each application it is important that the appropriate trim is used.

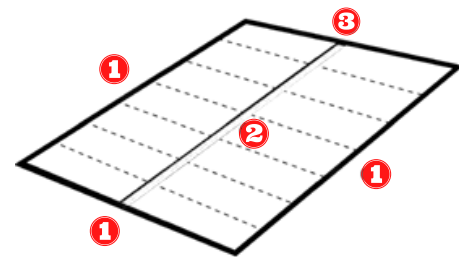
## GABLE/ PITCHED

1. U Edge Trim - used for all exposed edges
2. H Joint Trim - required for long pitches
3. U Edge Trim (Can be cut for L edge)



## FLAT ROOF

1. U Edge Trim
2. H Joint Trim - if run is greater than 2.4m
3. U Edge Trim (Can be cut for L edge)







1300 366 938



info@permacomposites.com



www.permacomposites.com

