

PUNOS

Portable Bluetooth®
Speaker - Z3

Instruction Manual



Contents

What's in the Box	3
Specifications	5
Rugged Credentials	3
Overview of the Speaker.....	7
Quick Use Guide	8
Troubleshooting and Support.....	14

The Bluetooth® word mark and logos are registered trademarks owned by Bluetooth SIG, Inc. and any use of such marks by 3 Feet Solutions Pty Ltd is under license. Other trademarks and trade names are those of their respective owners

What's in the Box

1. Z3 Bluetooth Speaker
2. USB charging cable
3. User manual
4. Warranty card

Rugged Credentials

- **Standards:** IPX4
- **Splash proof:** Can face only light water splashes in any direction
- **Dustproof:** No

Maintaining Water Protection

The device may be damaged if water or dust enters it. It cannot be used in dirty or dusty environments.

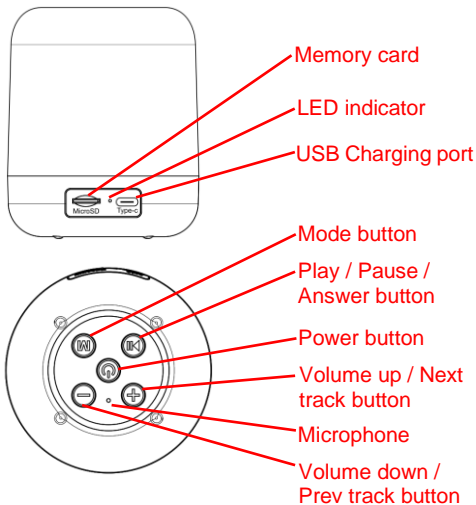
- Do not immerse the device in water.
- Do not expose the device to water.
- If the device is dropped or receives an impact, the splash proof feature may be damaged.
- The power adapter and USB cable are not water-resistant. Do not touch them with wet hands.

Specifications

Model name:	Z3 Portable Bluetooth Speaker
Model number:	PZ3BS23B
Dimensions:	103 x 82 x 82 mm
Weight:	215g
Bluetooth Ver.:	5.3
IP Rating:	IPX4
Battery:	500 mAh
Wireless Range:	10 meters
Speaker Power:	3W

Impedance:	4Ω
Frequency:	45Hz - 20kHz
S/N Ratio:	> 90dB
Degree of Distortion:	< 10%
Driver Size:	50mm
Play Time (70% volume):	Up to 5 hours
Charing Time:	< 2.5 hours
Playback mode:	Memory card, Bluetooth, FM radio
Charging Port:	USB Type-C
Audio Format:	MP3

Overview of the Speaker



Quick Use Guide

LED indicator

1. Red – on: Battery is charging
2. Red – off: Battery is fully charged
3. Red – flashing: Battery is low
4. Blue – on: Bluetooth is connected
5. Blue – fast flashing: Bluetooth is ready to pair or was disconnected
6. Blue – slow flashing: Playing back from the memory card or USB drive

Charging the speaker

Connect the charger to the speaker by inserting the USB-C cable into the USB-C port in the speaker and connecting the power adaptor to a wall socket. (*Red LED: on*)

When the battery is fully charged, the Red LED will go off.

Turning the speaker on and off

1. To power the speaker on, simply hold down the Power button for 3 seconds.
2. To turn the speaker off, simply hold the Power button down for 3 seconds.

Adjusting the sound volume

1. To increase the sound volume, short press the Volume up button.
2. To decrease the sound volume, short press the Volume down button.

Connecting your phone to the speaker via Bluetooth

1. Turning on the speaker without inserting any memory card or USB drive, the speaker will start in Bluetooth pairing mode. (*Blue LED: fast flashing*)
2. Using your phone's Bluetooth settings menu to select and connect to the

speaker. (Bluetooth device name: PUNOS Z3 Speaker)

3. Once connected, you can play the music from your phone or make phone calls using the speaker. (*Blue LED: on*)
4. To start again the Bluetooth pairing mode, keep pressing the Mode button until the next Bluetooth mode is selected.

Selecting audio sources to playback

1. Press the Mode button until you reach your desired audio source: Bluetooth ⇨ FM radio ⇨ memory card
2. Press the Play button to play or pause the playback.

3. Long press the Volume buttons to go to the Next or Previous audio track.

Using FM radio

1. Connect the USB cable to the speaker's USB port to act as the FM antenna.
2. Press the Mode button until you reach the FM radio mode.
3. Long press the Mode button to start auto-tuning and save the stations found.
4. Long press the Volume buttons to go to the Next or Previous station.

Making or answering phone calls

1. To re-dial the last dialed number, double press the Power button in Bluetooth mode.
2. To answer an incoming call, press the Play button.
3. To reject an incoming call, long press the Play button.
4. To end the ongoing call, press the Play button.

Adjusting the LED light

1. To change the LED light effect, double press the power button.

Troubleshooting and Support

If you are experiencing difficulties with your speaker, please go through the following troubleshoots:

The speaker will not power on

1. Ensure you are pressing and holding the power button for at least 3 seconds.
2. Ensure you have charged the speaker for at least 10 minutes.
3. The Speaker has an auto power off timer of 10 minutes. Long press the Power button again to turn it on.

The speaker won't charge

1. Ensure the power plug is inserted in the wall socket correctly and the wall switch is turned on.
2. Ensure the wall power socket is working by testing another device or another power socket.
3. Ensure you have inserted the USB-C cable into the speaker correctly.
4. Ensure there is no dirt or dust accumulated in the connector or socket.
5. Ensure you have left the speaker on charge for at least 10 minutes as the battery may have run out of charge completely.

My phone can't connect to the speaker via Bluetooth

1. Ensure the speaker is in Bluetooth mode.
2. Ensure you have turned on and activated the Bluetooth settings of your phone.
3. Your phone may be too far away from the speaker to connect. Ensure they are within the range of 10 meters.
4. When connecting to the phone for the first time, ensure both of them are in Pairing Mode.

Failure to make or answer a call

1. Ensure the speaker is in Bluetooth mode and connected to the phone.
2. The speaker maybe too far away from the mobile phone. Ensure their distance is within 10 meters.

The other party cannot hear you on the call

1. Ensure your hand or fingers are not covering the mic on the speaker.
2. Ensure you are speaking directly into the microphone.
3. Ensure the other party has their volume turn up to their desired level.

Failure to play the music from the USB drive or memory card

1. Ensure the USB drive or memory card is fully plugged in to the slot.
2. Ensure the audio files are in MP3 format.

Failure to tune in to a FM radio station

1. Ensure the speaker is in FM radio mode and a USB-C cable is connected to the speaker to act as the FM antenna.
2. Perform an auto-tuning for the speaker to save all the available radio stations first.



PUNOS

**Portable Bluetooth® Speaker - Z3
Instruction Manual**

Model No: PZ3BS23B