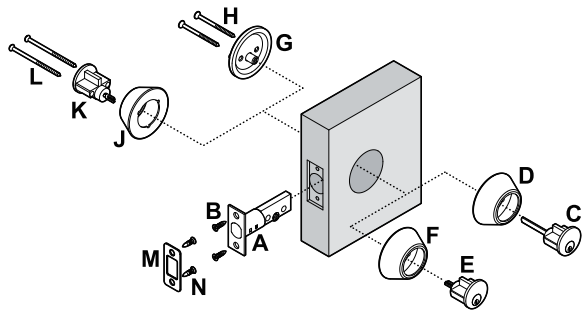


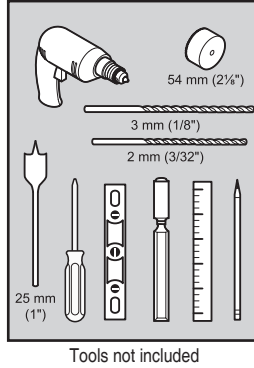
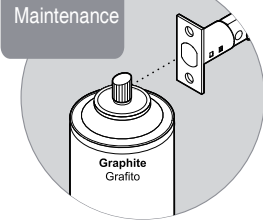


Deadbolt

Quick Installation Guide

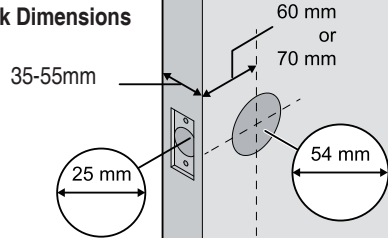


Maintenance

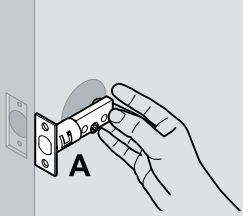


Tools not included

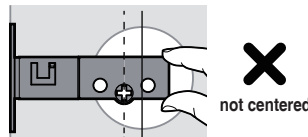
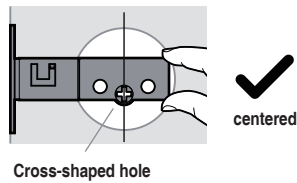
1 Check Dimensions



2 a. Hold the latch in front of the door hole, with the latch face flush against the door edge.

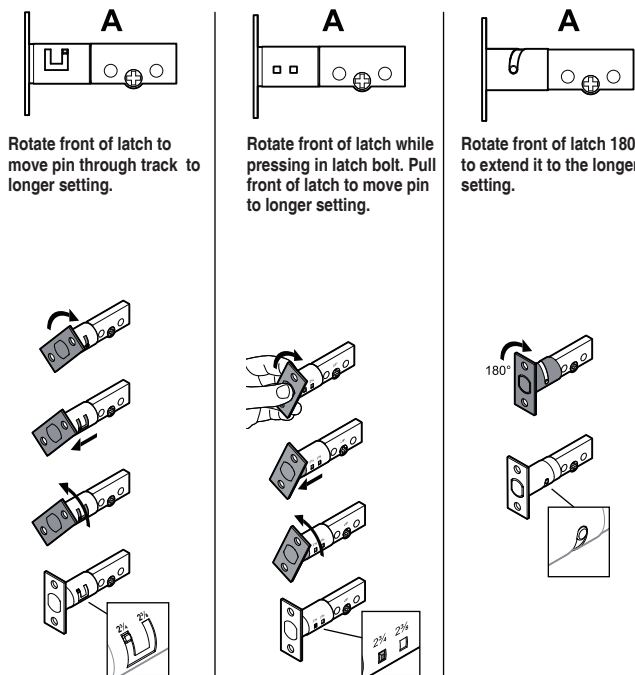


b. If the cross-shaped hole is centred in the door hole, no adjustment is required. Proceed to step 3.



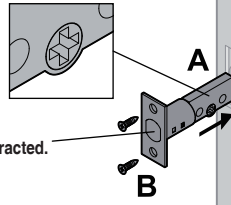
c. Latch Adjustable(only if need)

Latch options



3 Install latch.

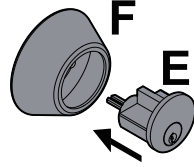
Cross-shaped hole is on bottom of latch.



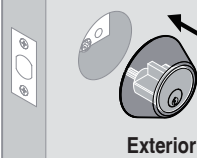
Make sure latch is retracted.

4 Double Cylinder Deadbolt

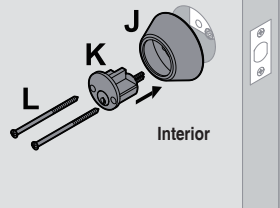
a. Insert exterior cylinder.



b. Install interior deadbolt.



c. Insert interior deadbolt.



5 Install strike.



Drilling Instructions(if required)

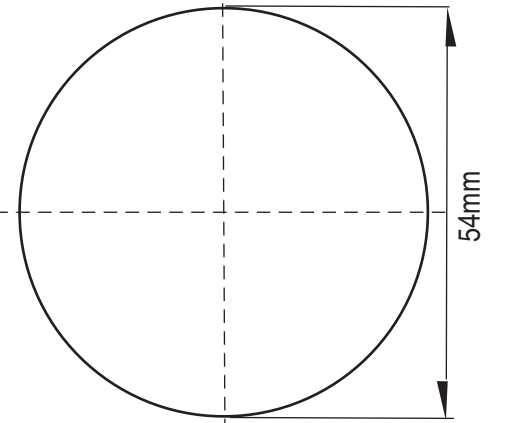
Applicable door thickness from 35mm to 55mm

For 70mm backset fold here

For 60mm backset fold here

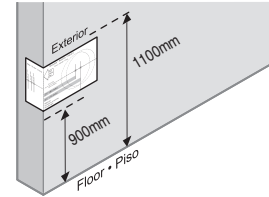
Centre line for Handle

Always locate the hole centre line on the centre line of the door edge
Mark central on your door edge

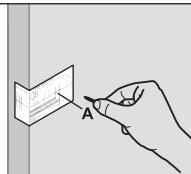


Installation Instructions

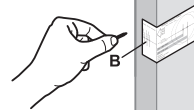
1 Place the template on the EXTERIOR side of door. Fold the template along the fold line and place the fold line along the edge of door with the centreline approximately 900mm-1100mm from the floor.



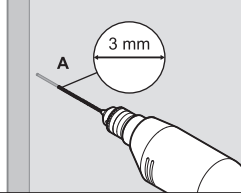
2 Mark hole A. Select the desired backset before marking the hole.



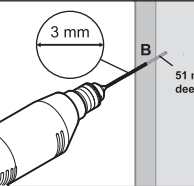
3 Mark hole B. Select the door thickness before marking the hole.



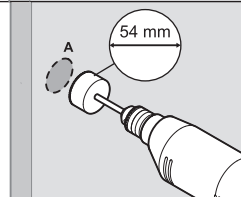
4 Drill a pilot hole through the door.



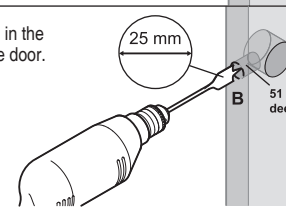
5 Drill a pilot hole in the edge of the door.



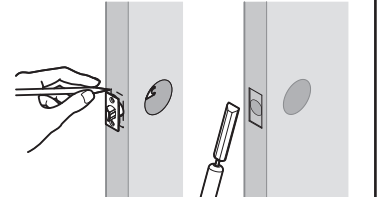
6 Drill from one side until the point of the drill just breaks through, then complete the hole from the other side to prevent splintering.



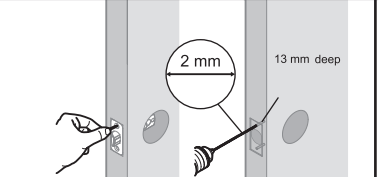
7 Drill a hole in the edge of the door.



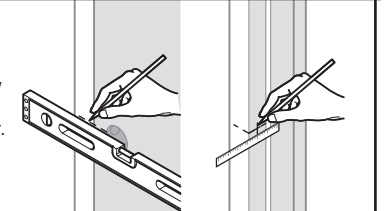
8 Insert the latch into the hole in the edge of the door. Trace the face of the latch. Remove the latch and use a chisel to create a pocket for the face of the latch.



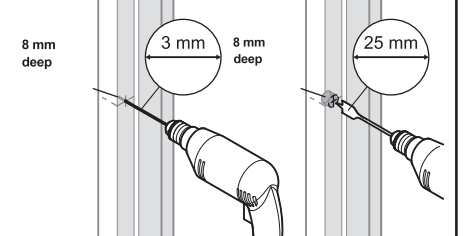
9 Insert the latch and mark the screw holes. Remove the latch and drill holes for the screws.



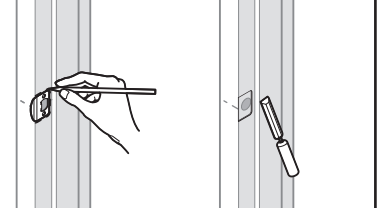
10 Mark a straight line from the centre of the bore holes across the door jamb. Locate the centre of the strike hole by measuring back from the door stop, 1/2 the thickness of door.



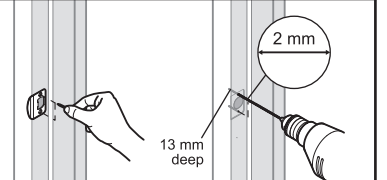
11 Drill a hole in the door frame.



12 Centre the strike on the hole. Trace around the strike. Remove the strike and use a chisel to create a pocket for the strike.



13 Place the strike in the pocket and mark the screw holes. Remove the strike and drill holes for the screws.



WARNING: This manufacturer advises that no lock can provide complete security by itself. This lock may be defeated by forcible or technical means, or evaded by entry elsewhere on the property. No lock can substitute for caution, awareness of your environment, and common sense. Builder's hardware is available in multiple performance grades to suit the application. In order to enhance security and reduce risk, you should consult a qualified locksmith or other security professional.

Very Important!

This entrance, privacy or passage knob/lever set is designed to suit either left or right hand opening doors. Please fasten all screws by hand and not an electric screw driver or drill, as over tightening is not recommended.

SAFETY TIP:

When assembling or installing this product wear protective gloves and eyewear.

Any claim under this warranty must be made within 12 months of the date of purchase of the product. To make a claim under the warranty, take the product (with proof of purchase) to any Bunnings store(see www.bunnings.com.au for store locations) Bunnings Group Ltd bears reasonable, direct, expenses of claiming under the warranty. You may submit details and proof to our store for consideration.

The warranty covers manufacturer defects in materials, workmanship and finish under normal use.

This warranty is provided in addition to other rights and remedies you may have under law: our goods come with guarantees which cannot be excluded under the Australian Consumer Law. You are entitled to replacement or refund for a major failure and to compensation for other reasonably foreseeable loss or damage. You are also entitled to have the goods repaired or replaced if the goods fail to be of acceptable quality and the failure does not amount to a major failure.

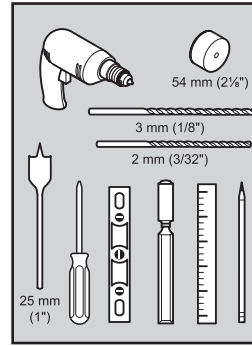
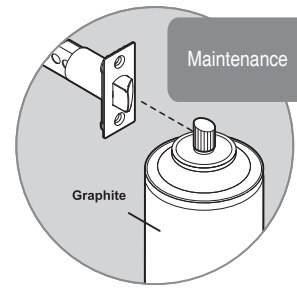
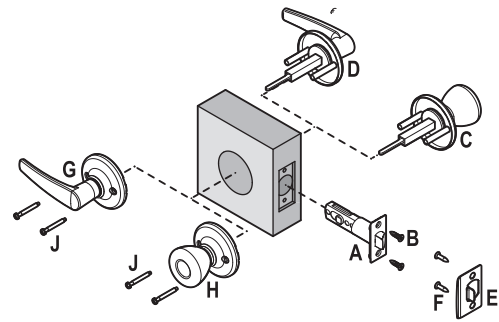
The warranty excludes damage resulting from product misuse or product neglect. The warranty covers domestic use only and does not apply to commercial applications.

This warranty is given by Bunnings Group Limited ABN 26 008 672 179, 16-18 Cato Street, Hawthorn East, Victoria 3123, e-mail: CustomerSupport@bunnings.com.au Or call our Customer Support Team – Ph.1800 797 586.



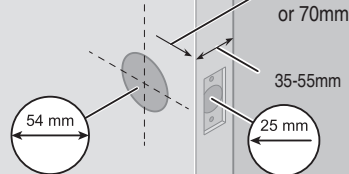
Knob/
Lever

Quick Installation Guide

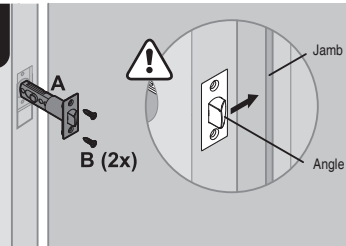


Tools not included

1 Check Dimensions

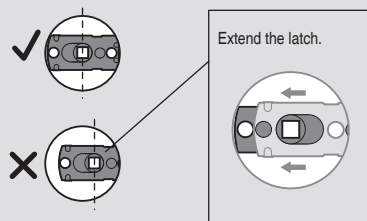


2

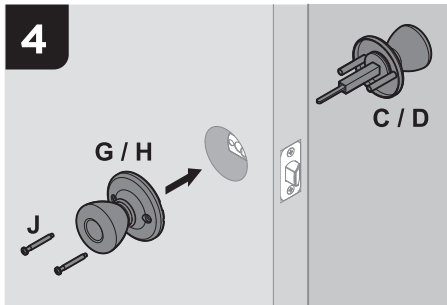


3

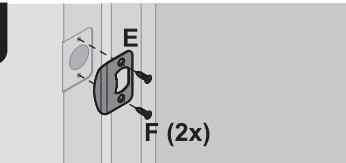
If the latch holes are centered in the door hole, no adjustable is required. Proceed to step 4.
If latch holes are NOT centered, adjust latch as shown.



4

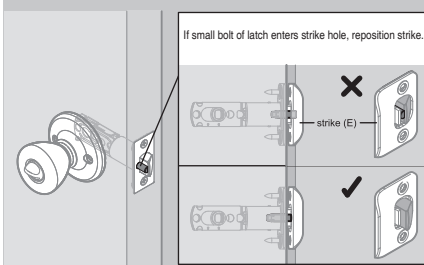


5



6

Keyed locks only: Close the door and test latch in strike.



WARNING: This manufacturer advises that no lock can provide complete security by itself. This lock may be defeated by forcible or technical means, or evaded by entry elsewhere on the property. No lock can substitute for caution, awareness of your environment, and common sense. Builder's hardware is available in multiple performance grades to suit the application. In order to enhance security and reduce risk, you should consult a qualified locksmith or other security professional.

Any claim under this warranty must be made within 12 months of the date of purchase of the product. To make a claim under the warranty, take the product (with proof of purchase) to any Bunnings store(see www.bunnings.com.au for store locations) Bunnings Group Ltd bears reasonable, direct, expenses of claiming under the warranty. You may submit details and proof to our store for consideration.

The warranty covers manufacturer defects in materials, workmanship and finish under normal use.

This warranty is provided in addition to other rights and remedies you may have under law: our goods come with guarantees which cannot be excluded under the Australian Consumer Law. You are entitled to replacement or refund for a major failure and to compensation for other reasonably foreseeable loss or damage. You are also entitled to have the goods repaired or replaced if the goods fail to be of acceptable quality and the failure does not amount to a major failure.

The warranty excludes damage resulting from product misuse or product neglect. The warranty covers domestic use only and does not apply to commercial applications.

This warranty is given by Bunnings Group Limited ABN 26 008 672 179, 16-18 Cato Street, Hawthorn East, Victoria 3123, e-mail: CustomerSupport@bunnings.com.au Or call our Customer Support Team – Ph.1800 797 586.

Very Important!

This entrance, privacy or passage knob/lever set is designed to suit either left or right hand opening doors. Please fasten all screws by hand and not an electric screw driver or drill, as over tightening is not recommended.



SAFETY TIP:

When assembling or installing this product wear protective gloves and eyewear.



Drilling Instructions(if required)

Applicable door thickness from 35mm to 55mm

For 70mm backset fold here

For 60mm backset fold here

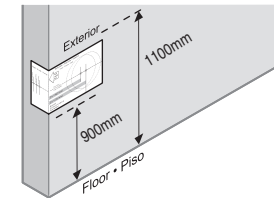
Centre line for Handle

Always locate the hole centre line on the centre line of the door edge
Mark central on your door edge

Installation Instructions

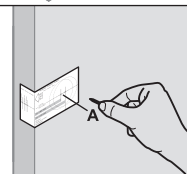
1

Place the template on the EXTERIOR side of door. Fold the template along the fold line and place the fold line along the edge of door with the centreline approximately 900mm-1100mm from the floor.



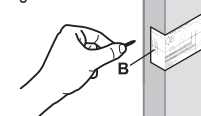
2

Mark hole A. Select the desired backset before marking the hole.



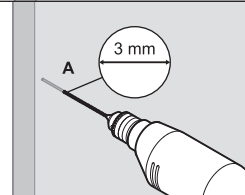
3

Mark hole B. Select the door thickness before marking the hole.



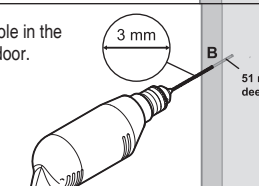
4

Drill a pilot hole through the door.



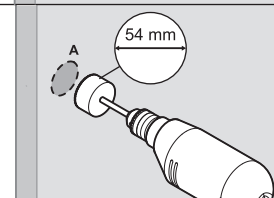
5

Drill a pilot hole in the edge of the door.



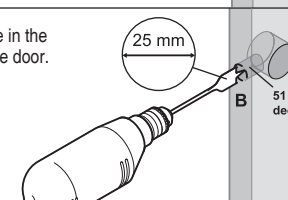
6

Drill from one side until the point of the drill just breaks through, then complete the hole from the other side to prevent splintering.



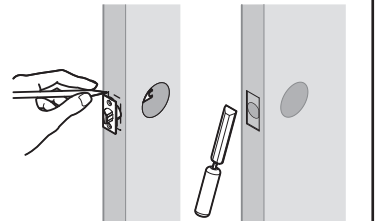
7

Drill a hole in the edge of the door.



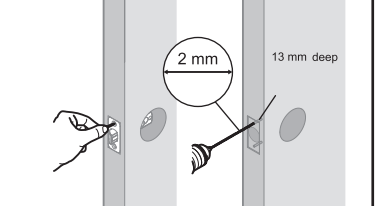
8

Insert the latch into the hole in the edge of the door. Trace the face of the latch. Remove the latch and use a chisel to create a pocket for the face of the latch.



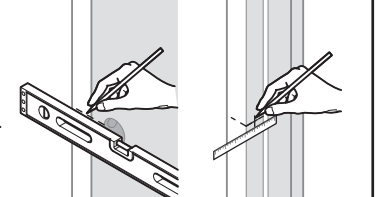
9

Insert the latch and mark the screw holes. Remove the latch and drill holes for the screws.



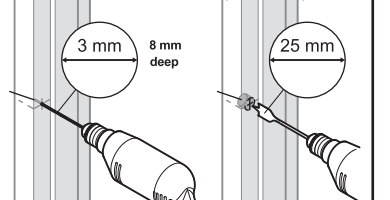
10

Mark a straight line from the centre of the bore holes across the door jamb. Locate the centre of the strike hole by measuring back from the door stop, 1/2 the thickness of door.



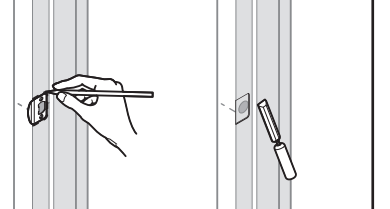
11

Drill a hole in the door frame.



12

Centre the strike on the hole. Trace around the strike. Remove the strike and use a chisel to create a pocket for the strike.



13

Place the strike in the pocket and mark the screw holes. Remove the strike and drill holes for the screws.

