

AEG

PSUM1000

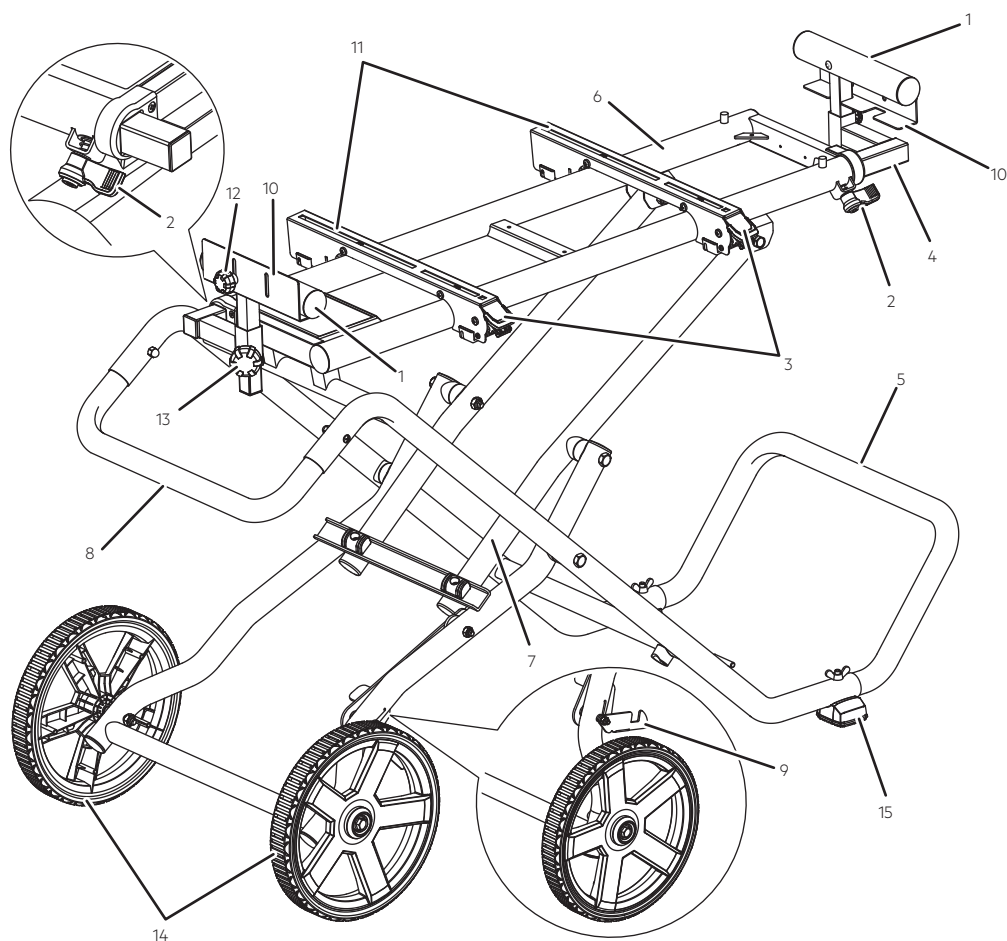
Original instructions

Important!

It is essential that you read the instructions in this manual before assembling, operating and maintaining the product.

Subject to technical modifications.

Fig.1

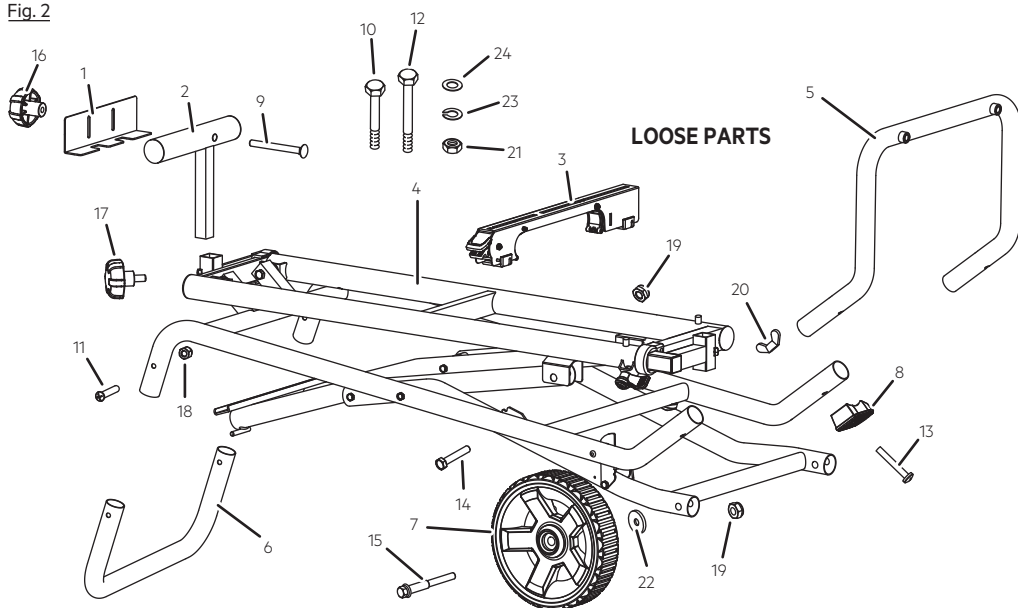


- 1 - Work supports
- 2 - Support arm locking lever
- 3 - Quick release lever for saw mounting brackets
- 4 - Support arm
- 5 - Frame support

- 6 - Top rails
- 7 - Central brace
- 8 - Handle
- 9 - Release lever
- 10 - Work stop

- 11 - Quick release saw mounting bracket
- 12 - Work stop adjustment knob
- 13 - Height adjustment knob
- 14 - Wheel
- 15 - Foot

Fig. 2



- | | | |
|---|---|---|
| 1 - Work stop x2 | 9 - Bolt (M6 x 60mm) x2 | 18 - Acorn nut x2 |
| 2 - Work support x2 | 10 - Bolt (M8 x 30mm) x4 | 19 - Lock nut (M10) x4 |
| 3 - Quick release saw mounting bracket x2 | 11 - Handle bolt (M8 x 45mm) x2 | 20 - Wing nut (M8) x2 |
| 4 - Top rail | 12 - Bolt (M8 x 50mm) x4 | 21 - Hex nut (M8) x4 |
| 5 - Frame support x1 | 13 - Foot bolt (M8 x 55mm) x2 | 22 - Wheel washer (ID10 x OD26 x 2t) x2 |
| 6 - Handle x1 | 14 - Frame bolt (M10 x 55mm) x2 | 23 - Lock washer (M8) x4 |
| 7 - Wheel x2 | 15 - Axle bolt x2 | 24 - Flat washer (M8) x4 |
| 8 - Foot x2 | 16 - Work stop adjustment knob x2 | |
| | 17 - Height adjustment knob for work support x2 | |

TECHNICAL DATA

MOBILE MITRE SAW STAND

PSUM1000

Work support range	1170 - 2790 mm.
Maximum load	136 kg.
Range of saw mounting bracket slots.....	290 - 435.5 mm.
Weight	27 kg

⚠ WARNING!

Read and understand all instructions. Failure to do so could result in potentially serious personal injury.

Save all warnings and instructions for future reference.

MITRE SAW STAND SAFETY WARNINGS

Know your accessory. Read the operator's manual carefully. Learn its applications and limitations, as well as the specific potential hazards related to this accessory.

This stand is designed to be used on a flat, stable surface. Do not use the product on an uneven or unstable surface. Be sure to allow enough room to handle and properly support the workpiece.

Take care when assembling or adjusting the stand, not to trap fingers or hands between the moving parts.

Make sure all bolts and connecting elements are firmly tightened. Proper assembly is important to prevent the risk of a collapse of the stand.

If any parts are missing, do not use the stand until the missing parts are replaced.

Do not connect to a power supply until assembly is complete. Failure to comply could result in accidental starting and possible serious personal injury.

Do not overload. Maximum weight of the mitre saw and workpiece together must not exceed 136 kg. Maximum loading on work support must not exceed 136 kg.

Do not modify or use this stand for any purpose for which it is not intended. Follow any mounting instructions very carefully. Failure to secure properly is likely to result in serious personal injury.

Follow the mitre saw and stand mounting instructions carefully, and ensure the mitre saw is fastened securely and avoid any gravity shift. Always ensure the mitre saw is mounted securely and is stable before connecting to a power supply.

To reduce the risk of injury from the mitre saw moving or falling from the stand, always check that all mounting bolts and nuts are securely



tightened before moving the stand or using the tool.

Adjust the work support height and extension arm length to appropriate position, ensuring the workpiece is supported firmly.

Always clamp the workpiece securely during cutting operation.

Secure all work in the vise or clamp to the stand to prevent it from moving whilst you work on it.

Always balance the load to prevent the stand from tipping over. When sawing, always consider the balance after the cut is made before you start work.

Objects, including parts of the workpiece may fall from the stand. Wear protective footwear to reduce the risk of injury.

Do not lift any part of the mitre saw that is attached to the stand.

Do not climb, sit or stand on this stand.

Do not use any attachments or accessories not recommended by the manufacturer of this stand. The use of attachments or accessories not recommended can result in serious personal injury.

Do not expose any part of the stand and mitre saw to rain or use in damp locations. Water entering a power tool will increase the risk of electric shock.

Always read and strictly follow the instructions and safety warnings that came from the manufacturer of your mitre saw when you are using it.

Save these instructions. Refer to them frequently and use them to instruct others who may use this accessory. If you loan someone this accessory, loan them these instructions also to prevent misuse of the product and possible injury.

ADDITIONAL SAFETY WARNINGS

Keep work area clear and well lit.

- Cluttered areas and benches invite injuries.

Make sure all moving parts are free from interference.

Ensure stand is set up on firm, level ground in a stable manner.

Keep other persons away.

- Do not let persons, especially children, not involved in the work touch the tool and keep them away from the work area.

Be aware of over-balancing. When a large workpiece is cut from one end of a job, the remaining piece may be heavy enough to tip the stand. Always ensure the workpiece is well supported.

Do not overreach. Keep proper footing and balance at all times. This enables better control of the power tool in unexpected situations.

Check to make sure that all fixing screws and knobs are tight and all legs are locked into place before operating the stand.

The tool must be used only for its prescribed purpose. Any use other than those mentioned in these instructions will be considered a case of misuse. The manufacturer shall not be liable for any damage or injury resulting from such cases of misuse.

Dress properly

- Do not wear loose clothing or jewellery; they can be caught in moving parts.
- Non-skid footwear is recommended when working outdoors.
- Wear protective hair covering to contain long hair.

Use personal protective equipment.

- Use safety glasses.
- Use face or dust mask if working operations create dust.
- Wear ear protectors. Exposure to noise can cause hearing loss.

Do not use tools in damp or wet locations. Most workpieces in a moist environment cannot be clamped firmly.

Make sure cord is located so that it will not be stepped on, tripped over, come in contact with sharp edges or moving parts or otherwise subjected to damage or stress. This will reduce the risk of accidental falls, which could cause injury, and damage to the cord, which could result in electric shock.

When operating a power tool outdoors, use an extension cord suitable for outdoor use. Use of a cord suitable for outdoor use reduces the risk of electric shock.

It is recommended that the tool always be supplied via a residual current device (RCD) having a rated residual current of 30mA or less. Ensure the work piece was clamped firmly and the lock release switch is on proper state before use. Unclamped workpieces can cause severe injury and damage.

Sawdust and splinters must not be removed while the machine is running.

Check damaged parts. Before further use of tool, it should be carefully checked to determine that it will operate properly and perform its intended function.

When not in use, tools should be stored in a dry locked-up place, out of the reach of children and do not allow persons unfamiliar with it.

Keep children and bystanders away while operating a power tool. Distractions can cause you to lose control.

Disconnect the plug from the power source or the battery pack from the power tool before making any adjustments, changing accessories or storing power tools. Such preventive safety measures reduce the risk of starting the power tool accidentally.

If devices are provided for the connection of dust extraction and collection facilities, ensure these are connected and properly used. Use of dust collection can reduce dust-related hazards.

Do not let familiarity gained from frequent use of tools allow you to become complacent and ignore tool safety principles. A careless action can cause severe injury within a fraction of a second.

Stay alert, watch what you are doing and use common sense when operating a power tool. Do not use a power tool while you are tired or under the influence of drugs, alcohol or medication. A moment of inattention while operating power tools may result in serious personal injury.

Have the product serviced by a qualified repair person.

When moving the stand or saw and bracket assembly, keep balanced to avoid injury.

⚠ WARNING

The use of any accessory or attachment other than one recommended in this instruction manual may present a risk of personal injury.

⚠ WARNING

To avoid serious personal injury, make sure the mitre saw is seated and locked on the bracket securely.

⚠ WARNING

Always unplug the saw and lock the saw arm in the down position.

RESIDUAL RISKS

Even when the product is used as prescribed, it is still impossible to completely eliminate certain residual risk factors. The following hazards may arise and the operator should pay special attention to avoid the following:

- Ensure the product is set up on a firm, level ground in a stable manner.
- Be aware of over-balancing. When a large piece is cut from one end of a job, the remaining piece may be heavy enough to tip the stand. Always ensure the workpiece is well supported.



- Check to make sure that all fixing screws and knobs are tight and all legs are locked into place before operating the stand.
- Ensure the workpiece is clamped firmly and all locking mechanisms are in proper state before use. Unclamped workpieces can cause severe injury and damage.

SPECIFIED CONDITIONS OF USE

The mitre saw stand is designed for providing a stable, secure work surface for an AEG PS 254 SB mitre saw for cutting operation.

The product should only be used as described above and in this manual, and is not intended for any other purpose.

ASSEMBLY

STEP 1: UNPACKING

See figure 2.

Packing list

1. Work stop.....	x2
2. Work support.....	x2
3. Quick release saw mounting bracket.....	x2
4. Mitre saw stand assembly/central brace/top rail assembly.....	x1
5. Frame support.....	x1
6. Handle.....	x1
7. Wheel.....	x2
8. Foot.....	x2
9. Bolt (M6 x 60mm).....	x2
10. Bolt (M8 x 30mm).....	x4
11. Handle bolt (M8 x 45mm).....	x2
12. Bolt (M8 x 50mm).....	x4
13. Foot bolt (M8 x 55mm).....	x2
14. Frame bolt (M10 x 55mm).....	x2
15. Axle bolt.....	x2
16. Work stop adjustment knob.....	x2
17. Work support height adjustment knob.....	x2
18. Acorn nut.....	x2
19. Lock nut (M10).....	x4
20. Wing nut (M8).....	x2
21. Hex nut (M8).....	x4
22. Wheel washer (ID10 x OD26 x 2t).....	x2
23. Lock washer (M8).....	x4
24. Flat washer (M8).....	x4
25. Operator's Manual.....	x1

The product requires assembly.

Carefully remove the product and any accessories from the box. Make sure that all items listed in the Packing List are included.

WARNING

Do not use this product if any parts in the Packing List are already assembled to your product when you unpack it. Parts on this list are not assembled to the product by the manufacturer and require customer installation. Use of a product that may have been improperly assembled could result in serious personal injury.

- Inspect the product carefully to make sure no breakage or damage occurred during shipping.
- Do not discard the packing material until you have carefully inspected and satisfactorily operated the product.

WARNING

If any parts are damaged or missing, do not operate the product until the parts are replaced. Use of the product with damaged or missing parts could result in serious personal injury.

WARNING

Do not attempt to modify the product or create accessories not recommended for use with the product. Any such alteration or modification is misuse and could result in a hazardous condition leading to possible serious personal injury.

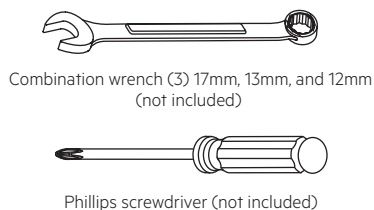
TOOLS NEEDED

See figure 3.

The following tools (not included) are needed for assembly:

- Combination Wrench (3) 17mm (x2), 13mm, and 12mm
- Phillips screwdriver

Fig. 3



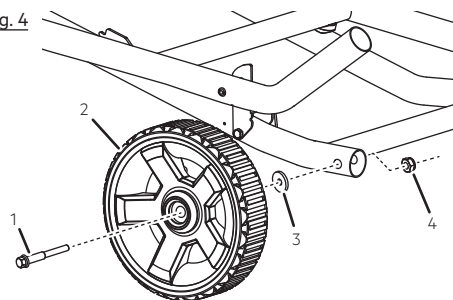
STEP 2: INSTALLING THE WHEELS

See figure 4.

Wheels are provided to assist in moving the mitre saw stand to the desired location.

- With the stand out of box and packaging removed, place it right side up on flat surface. This is the horizontal closed position.
- Raise the end of the stand assembly high enough to gain access to the frame bottom; securely position props underneath to support.
- Slide axle bolt through the wheel, washer, and then through the holes in the frame.
- Install lock nut on bolt and tighten.
- Repeat the process on the other side to install second wheel.

Fig. 4



STEP 3: ATTACHING THE HANDLE

See figure 5.

CAUTION

Be careful to avoid pinching your fingers or hands when installing the handle onto the frame.

Attach the handle on the end of the stand assembly opposite the wheels.

- Insert handle into stand assembly as shown.
- Align the holes in the handle with the holes in the stand assembly.
- Insert the bolt through the holes in the handle and the stand assembly.
- Place acorn nut onto bolt and tighten.
- Repeat on other side.

Fig. 5

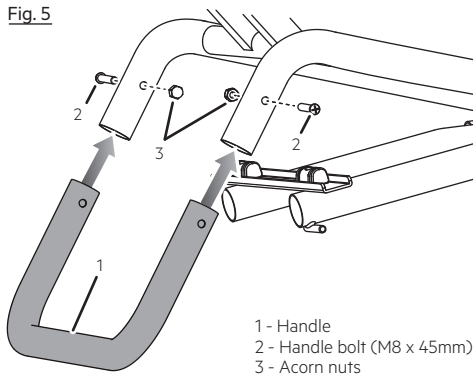
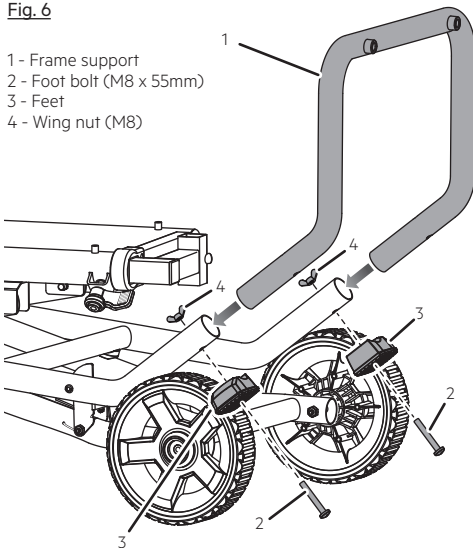


Fig. 6

- 1 - Frame support
- 2 - Foot bolt (M8 x 55mm)
- 3 - Feet
- 4 - Wing nut (M8)



STEP 4: INSTALLING THE FRAME SUPPORT

See figure 6.

Install the frame support on the stand assembly on the same end as the wheels.

- Insert frame support into stand assembly as shown.
- Align the holes in the frame support with the holes in the stand assembly.
- Place feet onto the stand assembly with logo facing the frame. Align the holes in the feet with the holes in the frame and frame support.
- Insert foot bolts (M8 x 55mm) through the holes in the feet so the bolts extend up through the frame and frame support.
- Install wing nuts and tighten.
- Repeat on other side.

STEP 5: SECURING THE TOP RAILS TO THE CENTRAL BRACE

See figure 7.

- Raise the stand assembly so that it rests on its wheels and frame support. This is the vertical closed position.

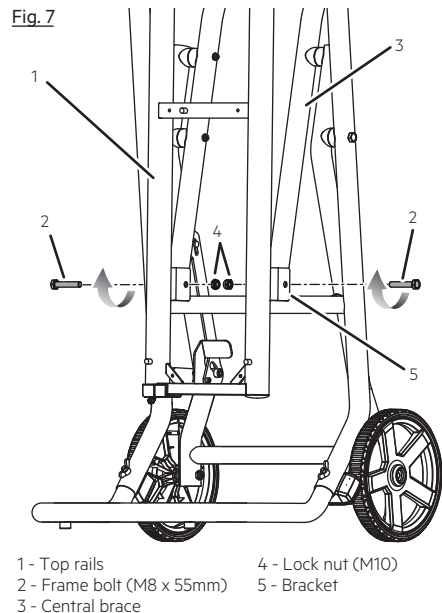
NOTE: Do not place the stand assembly in the vertical closed position until the frame support is installed and all previous assembly procedures have been followed.

- Align the holes in the brackets with the holes in the central brace as shown.
- Insert bolts through the holes in the bracket and central brace.
- Place nuts onto bolts and tighten securely, do not over tighten.

WARNING

To reduce the risk of injury, make sure top rails are secured to the central brace. Failure to secure the top rails could cause instability during use resulting in possible serious injury.

Fig. 7



STEP 6: OPENING THE MITRE SAW STAND

See figure 8-9.

- Stand at the wheel side of the stand assembly and grasp the handle.
- Step on the release lever and pull the handle toward you at the same time.
- Ease the stand assembly toward the floor by pushing the handle toward the floor until the stand is in an open position.

NOTE: The release lever will close over the central brace locking the stand in an open position.

STEP 7: ATTACHING WORK STOPS TO WORK SUPPORTS

See figures 10.

- Align slot in work stop with hole in work support, as shown.
- Slide bolt through both the work support and work stop.
- Install adjustment knob and tighten securely.
- Repeat with other work stop.

STEP 8: INSTALLING THE WORK SUPPORTS

See figures 11.

The work supports brace the workpiece during cutting operations.

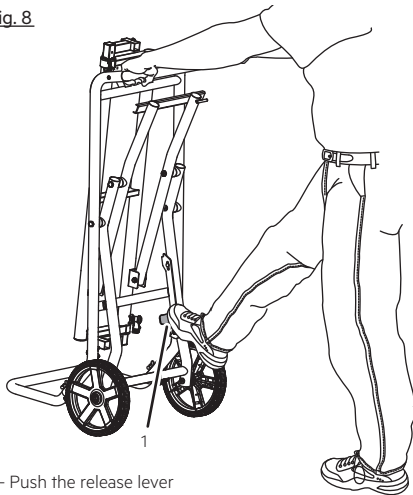
- Slide the support arm out for accessibility. Refer to Using the Support Arms later in this manual.
 - Insert the work support into bracket.
- NOTE:** Work supports should be positioned to provide support in front of saw fence.
- Insert adjustment knob through knob hole on side of bracket and tighten to secure into position.
 - Repeat on the other end.

STEP 9: CLOSING THE STAND

See figures 12 - 14.

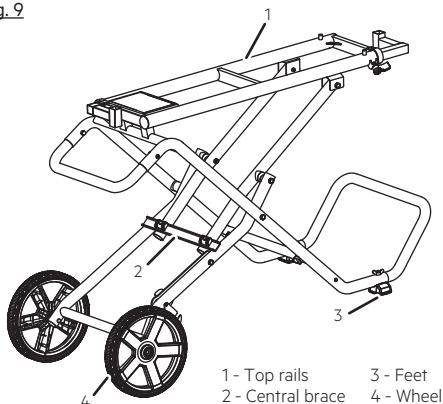
- If a mitre saw is assembled on the stand, make sure to place the blade 90° to the table (if applicable), mitre the blade to the right as far as it will go, lock the saw arm in the down position, and lock all knobs and levers.

Fig. 8



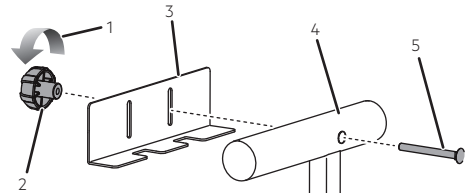
1 - Push the release lever

Fig. 9



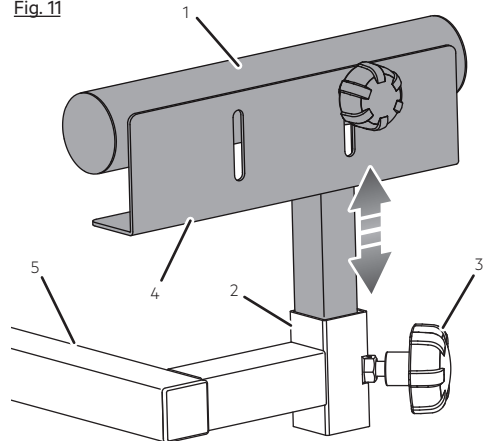
1 - Top rails
2 - Central brace
3 - Feet
4 - Wheel

Fig. 10



1 - Thread adjustment knob onto bolt
2 - Work stop adjustment knob
3 - Work stop
4 - Work support
5 - Bolt (M6 x 60mm)

Fig. 11



1 - Work support
2 - Bracket
3 - Height adjustment knob
4 - Work stop
5 - Support arm

NOTE: ALWAYS move mounted saw opposite the wheeled end of stand (in the open position) prior to transporting or taking down unit and ensure saw mounting brackets are securely locked.

NOTE: If a sliding compound mitre saw is mounted on the stand, it may be necessary to slide the power head/blade assembly forward and lock in place when going through doorways or other narrow openings.

- Remove any workpieces, clamps, or other accessories from the tool.
- Retract support arm. Refer to Using the Support Arms later in this manual.
- Stand at the wheel end of the stand and grasp the handle.
- Step on the release lever. Lift the handle up and away from the body until the unit rests on the wheels and frame support and release lever clicks into place. This is the vertical closed position.

NOTE: You may have to step onto the axle frame between the wheels to securely lock the release lever into place.

⚠ WARNING

To avoid serious personal injury when raising the front of the stand, bend your knees so you can lift with your legs, not your back.

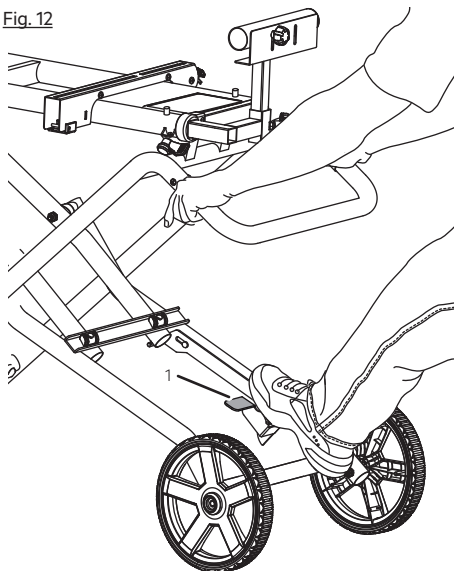
⚠ WARNING

Use the handle to raise the stand. Do not raise by any part of the mitre saw that is attached to the stand. Failure to heed this warning may result in possible injury and damage the product.

To lower the stand in closed position:

- Stand at the wheel side of the stand and grasp the handle.
- Tilt the unit toward you and then slowly lower it to the ground. This is the horizontal closed position.

Fig. 12



1 - Push the release lever

⚠ CAUTION

Be careful not to pinch fingers when lowering to the ground.

Fig. 13

VERTICAL CLOSED POSITION

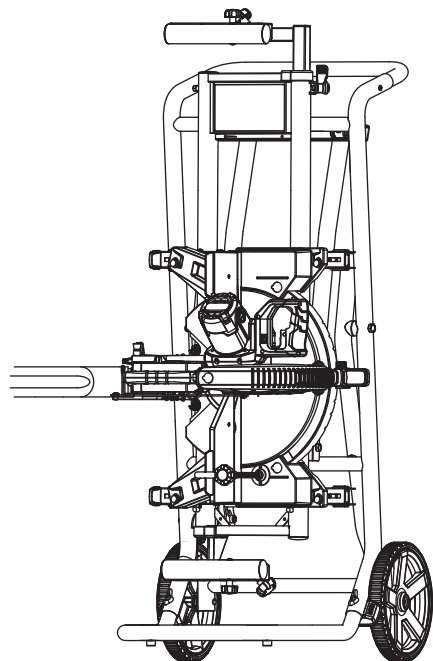
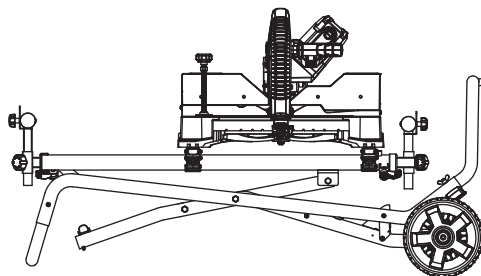


Fig. 14

HORIZONTAL CLOSED POSITION



OPERATION

⚠ WARNING

Do not allow familiarity with products to make you careless. Remember that a careless fraction of a second is sufficient to inflict severe injury.

⚠ WARNING

Always wear eye protection with side shields. Failure to do so could result in objects being thrown into your eyes, resulting in possible serious injury.

⚠ WARNING

Do not use any attachments or accessories not recommended by the manufacturer of the product. The use of attachments or accessories not recommended can result in serious personal injury.

ADJUSTING THE LOCK LEVER

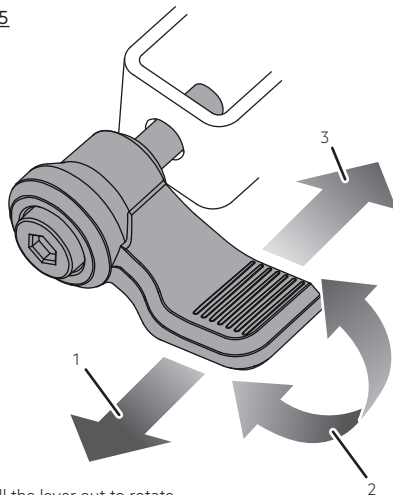
See figure 15.

The lock lever on the stand consists of a repositionable lever and locking hex screw. The lever can be repositioned without moving the hex screw for the best tightening orientation.

To reposition the lever:

- With the lever seated against the hex screw, rotate the lever clockwise to lock the hex screw as tightly as possible with the lever in the current position.
 - Pull the lever away from the saw to disengage it from the hex screw.
 - Keep a steady pull on the lever, then rotate the lever as needed to the desired position on the hex screw.
 - Release the lever so that it snaps into place on the hex screw.
- NOTE:** The lever may rotate slightly after release as it properly seats on the hex screw.

Fig. 15



- 1 - Pull the lever out to rotate
- 2 - Rotate to the desired position
- 3 - Release the lever to lock

⚠ WARNING

The mounting brackets are designed to fit snugly over the top rails with locking levers in the open position. With the locking levers in the lowered (locked) position, you should not be able to slide the mounting bracket assembly along the top rails or remove the bracket assembly from the top rails. If the mounting brackets will not fit over top rails, or if the brackets can be removed from the top rails when the levers are locked, remove bracket assembly immediately and adjust bracket adjustment screw. Failure to heed this warning may result in serious personal injury.

USING THE SUPPORT ARMS

See figure 16.

Use the support arms when working with longer workpieces. Both support arms may be adjusted to provide maximum workpiece support.

To extend the support arms:

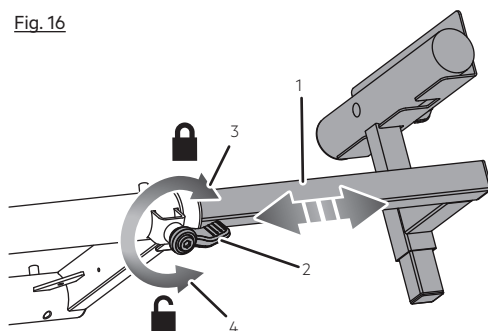
- Loosen the locking clamp by rotating lock lever counterclockwise.
- Extend the support arm to the desired position.
- Tighten the locking clamp by rotating lock lever clockwise.

To retract support arm:

- Loosen the locking clamp by rotating lock lever counterclockwise.
- Push support arm fully into stand.
- Tighten the locking clamp by rotating lock lever clockwise.

NOTE: If lock levers do not fully tighten or loosen, see Adjusting the Lock Lever in the Maintenance section of this manual.

Fig. 16



- 1 - Support arm
- 2 - Locking lever
- 3 - To lock
- 4 - To unlock

USING THE WORK SUPPORT

See figure 17.

Rest the workpiece on top of the work support to support the workpiece during cutting operations.

Place the workpiece against the work stop whenever you need to make repetitive cuts of the same size.

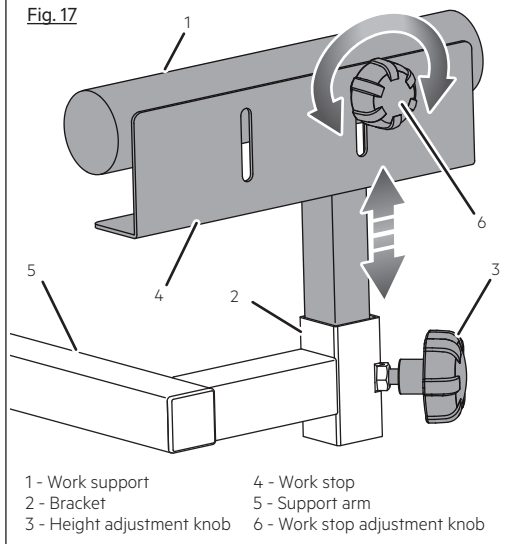
To adjust the work support:

- Loosen the height adjustment knob.
- Adjust the work support to the desired position.
- Tighten the height adjustment knob.

To adjust work stop:

- Loosen the work stop adjustment knob.
- Raise or lower the work stop to the desired position.
- Tighten the work stop adjustment knob.

Fig. 17



STEP 7: MOUNTING BRACKET ADJUSTMENT

See figures 18.

If the tool and bracket assembly can slide over the top rails or be removed from the top rails when the levers are locked, the bracket adjustment screws need to be tightened. If the tool and bracket assembly will not fit over top rails, the bracket adjustment screw needs to be loosened.

NOTE: The tool should be removed from the mounting brackets before attempting to tighten or loosen the bracket adjustment screws.

To adjust:

- Make sure the mounting bracket lock levers are in the unlocked position.
- Lift brackets away from the top rails.
- Use a wrench to slightly loosen the nut.
- Turn the screw with a Phillips screwdriver. Rotate clockwise if the

bracket assembly needs to be tightened or counterclockwise if the assembly needs to be loosened.

- Install the bracket on the front top rail then lower bracket to allow the rear clamp of the bracket to seat fully over the rear top rail.
NOTE: The mounting bracket should fit snugly over the top rails when in the unlocked position.
- Lock the brackets in position by lowering the locking levers.
NOTE: If the locking lever on the mounting bracket cannot easily be pushed down into the closed position, the adjustment screw is too tight. Do not force locking lever into the closed position. Loosen the adjustment screw.
- When the correct position is achieved, wrench-tighten the nut to secure.
- Repeat with the second mounting bracket.

Do not modify the product in any way or use accessories not approved by the manufacturer. Your safety and that of others may be compromised.

ATTACHING MITRE SAW TO THE MOUNTING BRACKETS

See figure 19-20.

Always position the mitre saw to achieve maximum balance and stability. All four corners of the saw must be bolted to the saw mounting brackets before use. Make sure bolts do not extend above the table of the mitre saw.

NOTE: Two sets of bolts have been provided for use when securing saws to the mounting brackets. Use the M8 x 30 set or the M8 x 50 set depending on the height of the saw.

NOTE: Ensure that saw mounting brackets can be clamped securely onto stand before mounting saw. If locking lever on saw mounting bracket cannot easily be pushed down into the closed position, the adjustment screw is too tight. Do not force locking lever into the closed position. Loosen the adjustment screw. Refer to the Maintenance section later in this manual for mounting bracket adjustment.

If the saw has mounting holes that line up with the slots in the saw mounting brackets: (see figure 19)

NOTE: The holes should align so that the brackets are parallel to each other when mounted.

- Disconnect the saw from power supply and lock the saw arm in the down position.
- Place two stable support underneath the saw to raise the saw and allow access to the saw's mounting feet.

Fig. 18

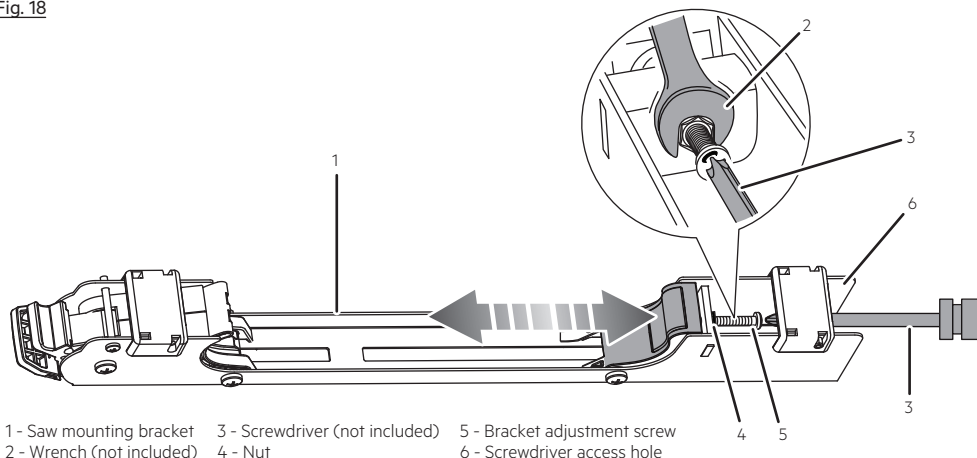
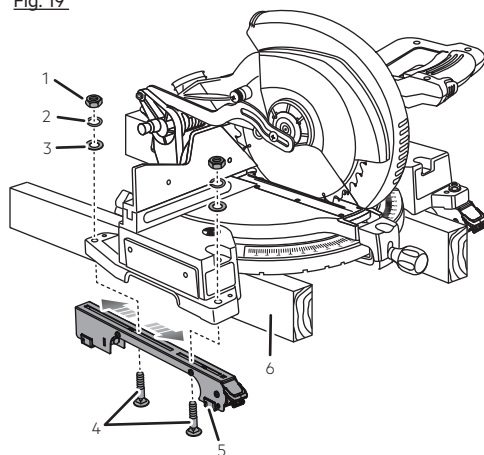
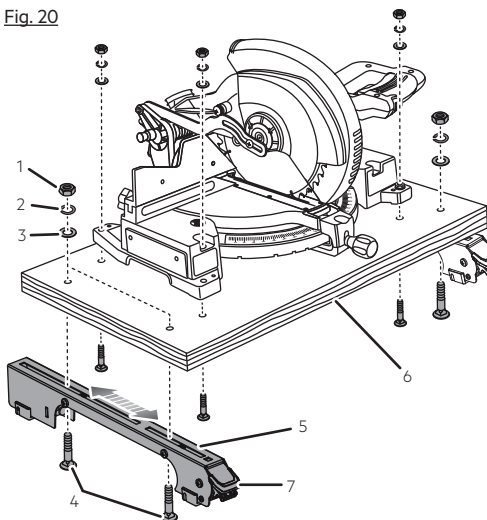


Fig. 19



- 1 - Hex nut (M8)
- 2 - Lock washer (M8)
- 3 - Flat washer (M8)
- 4 - Bolt (M8 x 30mm or M8 x 50mm)
- 5 - Saw mounting bracket
- 6 - Stable support

Fig. 20



- 1 - Hex nut (M8)
- 2 - Lock washer (M8)
- 3 - Flat washer (M8)
- 4 - Bolt (M8 x 30mm or M8 x 50mm)
- 5 - Saw mounting bracket
- 6 - Mounting surface (not included)
- 7 - Lock lever

- Place the saw mounting bracket underneath the raised side of the saw, and insert bolt through bracket slots and mounting holes in saw.

NOTE: The saw mounting brackets should be placed so that the lock levers face the front of the saw.

- Loosely secure in place using a flat washer, lock washer, and hex nut.

- Insert second bolt through bracket and saw, then loosely secure.

NOTE: Dummy fitting on top rail will assist in getting a better alignment.

- Repeat procedure to attach second bracket to saw.
- After making sure both brackets are parallel to each other, lightly tighten all four nuts to hold in position.

If the saw has holes that do not line up with the slots in the saw mounting brackets: (see figure 20)

- Disconnect the saw from power supply and lock saw arm in the down position.
- Mount the saw to a mounting surface at least 15 mm thick using bolts, washers, and nuts (not included).
- Drill holes in the mounting surface to match the position of the slots in the saw mounting brackets.
- Place the saw mounting bracket underneath the mounting surface, and insert bolt through bracket slots and the mounting surface.
- **NOTE:** The saw mounting brackets should be placed so that the lock levers face the front of the saw.
- Loosely secure in place using a flat washer, lock washer, and hex nut.
- Insert second bolt through bracket and the mounting surface, then loosely secure.
- **NOTE:** Dummy fitting on top rail will assist with getting a better alignment.
- Repeat procedure to attach second bracket to the mounting surface.
- After making sure both brackets are parallel to each other, lightly tighten all four nuts to hold in position.

MOUNTING THE MITRE SAW TO THE STAND

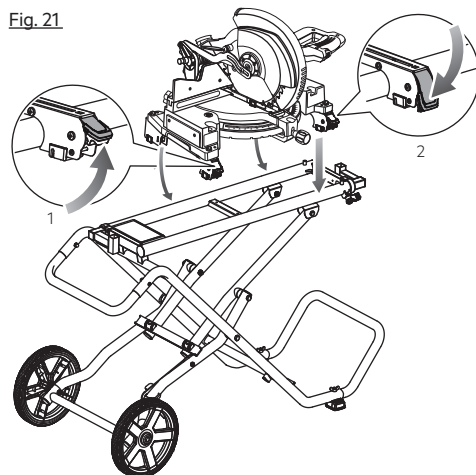
See figures 21 - 22.

⚠ WARNING

Do not mount mitre saw to the stand before ensuring the stand can be opened and locked securely. Failure to do so may result in possible injury and damage the tool.

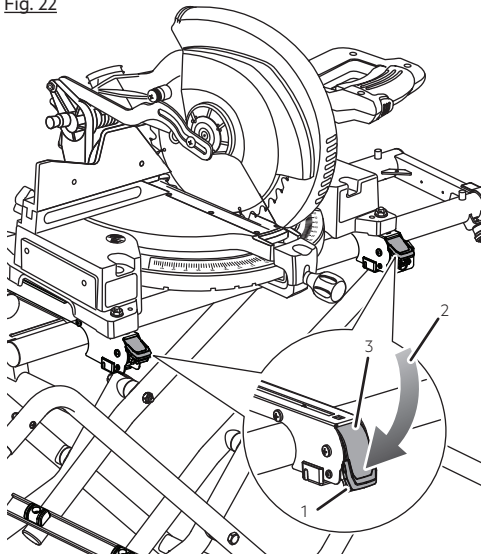
- Make sure the mounting bracket lock levers are in the unlocked position.
- Lift the saw and bracket assembly, allowing the assembly to tilt slightly toward your body.

Fig. 21



- 1 - Unlocked position
- 2 - Locked position

Fig. 22



- 1 - Locking lever release trigger
- 2 - Push down to lock
- 3 - Locking lever

- While still tilted toward you, place the front end of the saw and bracket assembly onto the top rails so the front clamps of the bracket assembly seat fully over top rails.

⚠ WARNING

To avoid serious personal injury, make sure the curved front edge of the saw mounting brackets are securely seated onto the top rails before seating the other end of the brackets. Failure to do so could cause you to lose control of the saw and bracket assembly, which could cause serious personal injury.

- Lower the saw and bracket assembly to allow the rear clamp of the bracket to seat fully over the top rails.
- Lock the brackets in position by lowering the locking levers.
NOTE: Continue to hold the saw and bracket assembly with one hand until both levers are securely locked.
- Check position and adjust, if necessary, to make sure the weight of the saw is evenly balanced over the top rails.
- Ensure the saw is fully seated and locked in position, then securely tighten the four nuts holding the saw to the saw mounting brackets.

⚠ WARNING

The saw mounting brackets are designed to fit snugly over the top rails with locking levers in the open position. With the locking levers in the lowered (locked) position, you should not be able to slide the saw mounting bracket assembly along the top rails or remove the bracket assembly from the top rails. If the saw mounting brackets will not fit over the top rails, or if the brackets can be removed from the top rails when the levers are locked, remove bracket assembly immediately and adjust bracket adjustment screw. See the Maintenance section of this manual. Failure to heed this warning may result in serious personal injury.

To remove saw from the stand:

- Squeeze locking lever release trigger and raise the locking levers to unlock the saw mounting brackets assembly.
- Grasp the brackets on both sides of the assembly and lift away from the top rails to disengage.
- With the assembly tilted slightly toward you, lift the front part of the assembly to disengage from the front edge of the top rails.

TRANSPORTING THE STAND

- Retract the supporting arms, then place and lock the stand in the vertical closed position. (Figure 13)
NOTE: ALWAYS move mounted saw opposite the wheeled end of stand (in the open position) prior to transporting or taking down unit and ensure saw mounting brackets are securely locked.
- Stand at the wheel side of the stand and grasp the handle.
- Tilt the stand toward you until it balances on the wheels, then roll the stand to the desired location.

STORING THE STAND

- The stand should be stored on a stable flat surface in the vertical or horizontal closed position.

⚠ CAUTION

If the stand will not remain upright, store in the horizontal closed position. Failure to do so may result in stand falling, resulting in injury or damage to stand and/or saw.

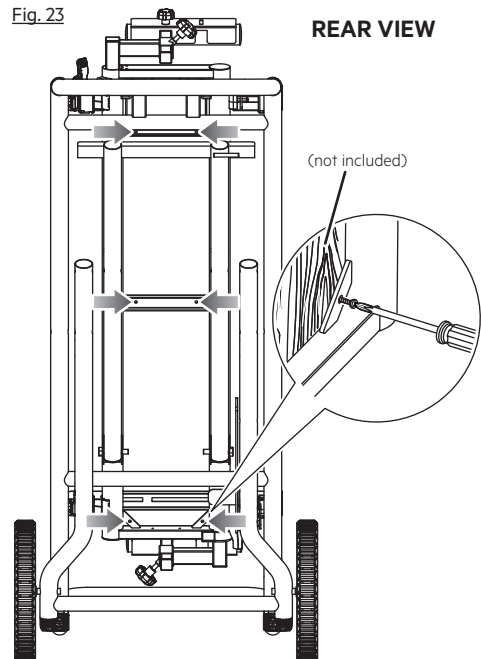
MOUNTING AN OPTIONAL WORK SURFACE

See figure 23.

By mounting a 19 x 190 x 882 mm piece of wood, PVC, or similar lightweight material, an additional work surface can be created. Mount the surface as shown using six 19 mm screws (not included).

Fig. 23

REAR VIEW



MAINTENANCE

WARNING

When servicing use only original replacement parts. Use of any other parts may create a hazard or cause product damage.

WARNING

Always wear eye protection with side shields. Failure to do so could result in objects being thrown into your eyes resulting in possible serious injury.

GENERAL MAINTENANCE

Avoid using solvents when cleaning plastic parts. Most plastics are susceptible to damage from various types of commercial solvents and may be damaged by their use. Use clean cloths to remove dirt, dust, oil, grease, etc.

WARNING

Do not at any time let brake fluids, gasoline, petroleum-based products, penetrating oils, etc., come in contact with plastic parts. Chemicals can damage, weaken or destroy plastic which may result in serious personal injury.

Do not modify the product in any way or use accessories not approved by the manufacturer. Your safety and that of others may be compromised.

Before and after each use, check the product for damage or broken parts. Keep the product in top working condition by immediately replacing parts with spares approved by the manufacturer.

When servicing, use only identical replacement parts. Use of any other parts may create a hazard or cause product damage.

Periodically check all fasteners for tightness. Retighten as necessary.

Do not make any adjustments to the stand while the mitre saw blade is in motion.

To assure safety and reliability, all repairs, including changing brushes, should be performed by an authorised service centre.

WARNING

For greater safety and reliability, all repairs should be performed by an authorised AEG service centre.

Use only AEG accessories and spare parts. Should components need to be replaced which have not been described, please contact one of our AEG service agents (see our list of guarantee/service addresses).

If needed, an exploded view of the product can be ordered. Please state the Article No. as well as the machine type printed on the label and order the drawing at your local service agents or directly at:

Techtronic Industries Australia Pty Ltd

PO Box 1065
Mount Waverley VIC 3149
Tel. no. 1300 234 797
Australia

Techtronic Industries N.Z. Limited

PO Box 12-806
Penrose AUCKLAND 1642
Tel no. 0800 234 797
New Zealand

SYMBOLS



Safety alert



Please read the instructions carefully before starting the product.



Do not reach into the gap. Beware of pinching.



Wear eye protection.



Do not exceed 136 kg.



Do not stand on top or use as ladder.



Do not sit on top.



AEG

www.aegpowertools.com.au
www.aegpowertools.co.nz

Techtronic Industries Australia Pty Ltd

31 Gilby Road, Mount Waverley, VIC 3149
Melbourne, Australia

Techtronic Industries N.Z. Limited

2 Landing Drive, Mangere
Auckland, 2022, New Zealand