

RYOBI®

RLT3640P

ORIGINAL INSTRUCTIONS

Cordless Brushless Powerhead Kit



IMPORTANT!

It is essential that you read the instructions in this manual before assembling, operating, and maintaining the product.

Subject to technical modification.

Safety, performance, and dependability have been given top priority in the design of your multifunction powerhead.

INTENDED USE

The multifunction powerhead is intended to be used only by adults who have read and understood the instructions and warnings in this manual and can be considered responsible for their actions.

The product is intended only for outdoor use in a well-ventilated area. For safety reasons, the product must be adequately controlled by a two-handed operation.

The product is approved for use with the EXPAND-IT pruner attachment APR05, cultivator attachment ACT05, edger attachment AED05, and hedge trimmer attachment AHF05.

The product should not be used with attachments other than the EXPAND-IT attachments listed above.

Do not use the product for any other purpose.

GENERAL POWER TOOL SAFETY WARNINGS

⚠ WARNING! Read all safety warnings and all instructions. Failure to follow the warnings and instructions may result in electric shock, fire and/or serious injury.

Save all warnings and instructions for future reference.

The term "power tool" in the warnings refers to your mains-operated (corded) power tool or battery-operated (cordless) power tool.

WORK AREA SAFETY

- **Keep work area clean and well lit.** Cluttered or dark areas invite accidents.
- **Do not operate power tools in explosive atmospheres, such as in the presence of flammable liquids, gases or dust.** Power tools create sparks which may ignite the dust or fumes.
- **Keep children and bystanders away while operating a power tool.** Distractions can cause you to lose control.

ELECTRICAL SAFETY

- **Power tool plugs must match the outlet. Never modify the plug in any way. Do not use any adapter plugs with earthed (grounded) power tools.** Unmodified plugs and matching outlets will reduce risk of electric shock.
- **Avoid body contact with earthed or grounded surfaces, such as pipes, radiators, ranges and refrigerators.** There is an increased risk of electric shock if your body is earthed or grounded.
- **Do not expose power tools to rain or wet conditions.** Water entering a power tool will increase the risk of electric shock.
- **Do not abuse the cord. Never use the cord for**

carrying, pulling or unplugging the power tool. **Keep cord away from heat, oil, sharp edges or moving parts.** Damaged or entangled cords increase the risk of electric shock.

- **When operating a power tool outdoors, use an extension cord suitable for outdoor use.** Use of a cord suitable for outdoor use reduces the risk of electric shock.
- **If operating a power tool in a damp location is unavoidable, use a residual current device (RCD) protected supply.** Use of an RCD reduces the risk of electric shock.

PERSONAL SAFETY

- **Stay alert, watch what you are doing and use common sense when operating a power tool. Do not use a power tool while you are tired or under the influence of drugs, alcohol or medication.** A moment of inattention while operating power tools may result in serious personal injury.
- **Use personal protective equipment. Always wear eye protection.** Protective equipment such as dust mask, non-skid safety shoes, hard hat, or hearing protection used for appropriate conditions will reduce personal injuries.
- **Prevent unintentional starting. Ensure the switch is in the off-position before connecting to power source and/or battery pack, picking up or carrying the tool.** Carrying power tools with your finger on the switch or energising power tools that have the switch on invites accidents.
- **Remove any adjusting key or wrench before turning the power tool on.** A wrench or a key left attached to a rotating part of the power tool may result in personal injury.
- **Do not overreach. Keep proper footing and balance at all times.** This enables better control of the power tool in unexpected situations.
- **Dress properly. Do not wear loose clothing or jewellery. Keep your hair, clothing and gloves away from moving parts.** Loose clothes, jewellery or long hair can be caught in moving parts.
- **If devices are provided for the connection of dust extraction and collection facilities, ensure these are connected and properly used.** Use of dust collection can reduce dust-related hazards.

POWER TOOL USE AND CARE

- **Do not force the power tool. Use the correct power tool for your application.** The correct power tool will do the job better and safer at the rate for which it was designed.
- **Do not use the power tool if the switch does not turn it on and off.** Any power tool that cannot be controlled with the switch is dangerous and must be repaired.
- **Disconnect the plug from the power source and/or the battery pack from the power tool before making any adjustments, changing accessories, or storing power tools.** Such preventive safety measures reduce the risk of starting the power tool accidentally.
- **Store idle power tools out of the reach of children**

and do not allow persons unfamiliar with the power tool or these instructions to operate the power tool. Power tools are dangerous in the hands of untrained users.

- **Maintain power tools. Check for misalignment or binding of moving parts, breakage of parts and any other condition that may affect the power tool's operation. If damaged, have the power tool repaired before use.** Many accidents are caused by poorly maintained power tools.
- **Keep cutting tools sharp and clean.** Properly maintained cutting tools with sharp cutting edges are less likely to bind and are easier to control.
- **Use the power tool, accessories and tool bits etc. in accordance with these instructions, taking into account the working conditions and the work to be performed.** Use of the power tool for operations different from those intended could result in a hazardous situation.

BATTERY TOOL USE AND CARE

- **Recharge only with the charger specified by the manufacturer.** A charger that is suitable for one type of battery pack may create a risk of fire when used with another battery pack.
- **Use power tools only with specifically designated battery packs.** Use of any other battery packs may create a risk of injury and fire.
- **When battery pack is not in use, keep it away from other metal objects, like paper clips, coins, keys, nails, screws or other small metal objects, that can make a connection from one terminal to another.** Shorting the battery terminals together may cause burns or a fire.
- **Under abusive conditions, liquid may be ejected from the battery; avoid contact. If contact accidentally occurs, flush with water. If liquid contacts eyes, additionally seek medical help.** Liquid ejected from the battery may cause irritation or burns.

SERVICE

- **Have your power tool serviced by a qualified repair person using only identical replacement parts.** This will ensure that the safety of the power tool is maintained.

ADDITIONAL SAFETY WARNINGS

- Some regions have regulations that restrict the use of the product to some operation. Check with your local authority for advice.
- Never allow children or people who are unfamiliar with the instructions to use the product. Local regulations may restrict the age of the operator.
- Ensure before each use that all controls and safety devices function correctly. Do not use the product if the OFF switch does not stop the motor or engine.
- Wear full eye and hearing protection, strong, sturdy gloves, and head protection while operating the product. Use a face mask if the operation is dusty.
- Do not wear loose-fitting clothing, short trousers, or

jewellery of any kind.

- Secure long hair so that it is above shoulder level to prevent entanglement in moving parts.
- The use of hearing protection reduces the ability to hear warnings (shouts or alarms). The operator must pay extra attention to what is going on in the working area.
- Operating similar tools nearby increases both the risk of hearing injury and the potential for other persons to enter your working area.
- Beware of thrown, flying, or falling objects. Keep all bystanders, children, and pets at least 15 m away from the work area. Stop the product if anyone enters the area.
- Do not operate the product in poor lighting. The operator requires a clear view of the work area to identify potential hazards.
- Keep a firm footing and balance. Do not overreach. Overreaching can result in loss of balance and can increase the risk of kickback.
- Do not use the product while tired, ill, or under the influence of alcohol, drugs, or medication.
- Keep all parts of the body away from any moving part.
- Inspect the product before each use. Check for the correct operation of all the controls. Check for loose fasteners. Make sure that all guards and handles are properly and securely attached. Replace any damaged parts before use.
- Do not modify the product in any way or use parts and accessories that are not recommended by the manufacturer.
- Do not let familiarity of the product allow you to become complacent and ignore product safety principles. A careless action can cause severe injury within a fraction of a second.
- Keep handles and grasping surfaces dry, clean, and free from oil and grease. Slippery handles and grasping surfaces do not allow for safe handling and control of the product in unexpected situations.
- If the product is dropped, suffers heavy impact, or begins to vibrate abnormally, immediately stop the product and inspect it for damage, or identify the cause of the vibration. Any damage should be properly repaired or replaced by an authorised service centre.

ADDITIONAL BATTERY SAFETY WARNINGS

To reduce the risk of fire, personal injury, and product damage due to a short circuit, never immerse the tool, battery pack, or charger in fluid or allow fluid to flow inside them. Corrosive or conductive fluids, such as seawater, certain industrial chemicals, and bleach or bleach-containing products, etc., can cause a short circuit.

TRANSPORTATION AND STORAGE

- Turn off the product, remove the battery pack, and allow the product to cool down before storing or transporting.
- Remove all foreign materials from the product.
- Do not store or transport the product with the battery pack fitted. Remove the battery pack, and secure it separately. Store the product in a cool, dry, and well-

ventilated place that is inaccessible to children. Keep the product away from corrosive agents, such as garden chemicals and de-icing salts. Do not store the product outdoors.

- For transportation in vehicles, secure the product against movement or falling to prevent injury to persons or damage to the product.

TRANSPORTING LITHIUM BATTERIES

Transport the battery pack in accordance with local and national provisions and regulations.

Follow all special requirements on packaging and labelling when transporting batteries by a third party. Ensure that no batteries can come in contact with other batteries or conductive materials while in transport by protecting exposed connectors with insulating, non-conductive caps or tape. Do not transport batteries that are cracked or leaking. Check with the forwarding company for further advice.

MAINTENANCE

- Use only original manufacturer's replacement parts, accessories, and attachments. Failure to do so can cause possible injury, can contribute to poor performance, and may void your warranty.
- Servicing requires extreme care and knowledge and should be performed only by a qualified service technician. Have the product serviced by an authorised service centre only. When servicing, use only original replacement parts.
- Turn off the product and remove the battery pack before conducting any maintenance or cleaning work.
- You may make adjustments and repairs described in this manual. For other repairs, contact an authorised service centre.
- For the replacement line, use only a nylon filament line of the diameter described in the specifications table of this manual.
- After extending the new cutter line, always return the product to its normal operating position before starting.
- After each use, clean the product with a soft, dry cloth. Any part that is damaged should be properly repaired or replaced by an authorised service centre.
- Check all nuts, bolts, and screws before each use and at frequent intervals for proper tightness to ensure that the product is in safe working condition. Any part that is damaged should be properly repaired or replaced by an authorised service centre.
- Bring the product to an authorised service centre to replace damaged or unreadable labels.

BATTERY PROTECTION FEATURES

RYOBI 36 V lithium-ion batteries are designed with features that protect the lithium-ion cells and maximise battery life. The following conditions may cause the product to stop during use:

- The maximum current draw of the battery has been exceeded, causing it to automatically stop powering the product. Release the trigger to reset the product, and pull the trigger to resume operation.

- Excessive temperatures cause the battery to stop powering the product. If the battery pack is too warm, allow it to cool down.

If the product still does not work, recharge the battery pack.

NOTE: The battery pack indicator LED will not work if the battery protection feature has caused the battery pack to stop powering the product. Release the tool trigger or remove the battery pack from the product, and the battery pack LED indicator will resume to its normal function.

WHAT'S IN THE BOX

See page 5.

- Powerhead attachment x 1
- Front handle x 1
- Battery pack x 1
- Charger x 1
- Operator's manual x 1

SYMBOLS ON THE PRODUCT



Read and understand all instructions before operating the product. Follow all warnings and safety instructions.



Do not expose the product to rain or damp condition.



Wear eye protection.



Wear ear protection.



Wear non-slip safety footwear when using the product.



Remove the battery pack before starting any work on the product.



Guaranteed sound power level



Waste electrical products should not be disposed of with household waste. Please recycle where facilities exist. Check with your local authority or retailer for recycling advice.



Regulatory compliance mark

SYMBOLS IN THIS MANUAL



Parts or accessories sold separately



Waste electrical products should not be disposed of with household waste. Please recycle where facilities exist.



Note

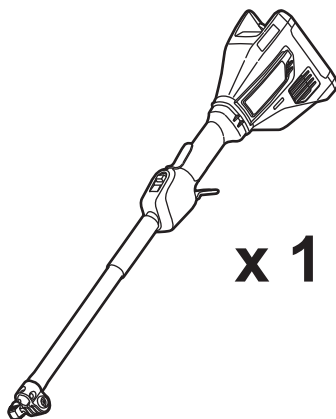


Warning

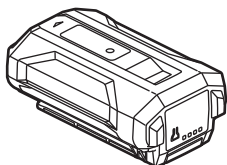
WHAT'S IN THE BOX



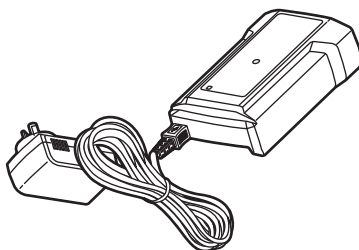
x 1



x 1



x 1



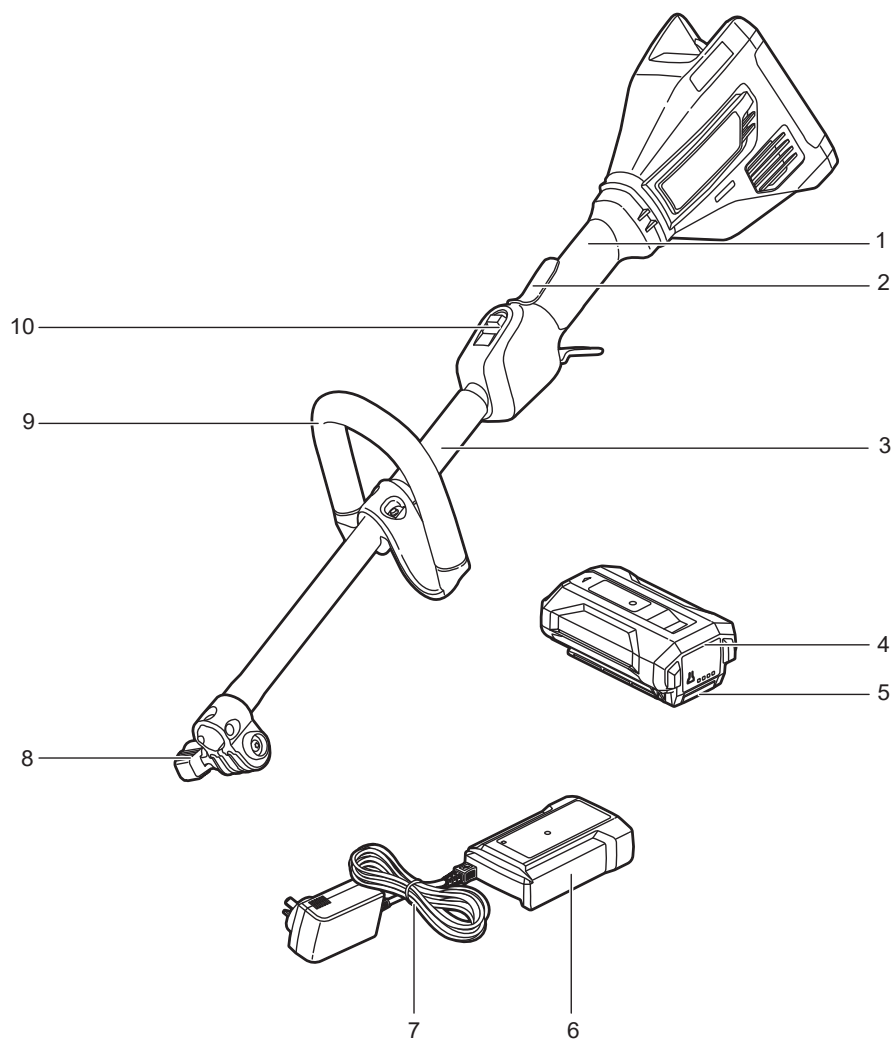
x 1



x 1

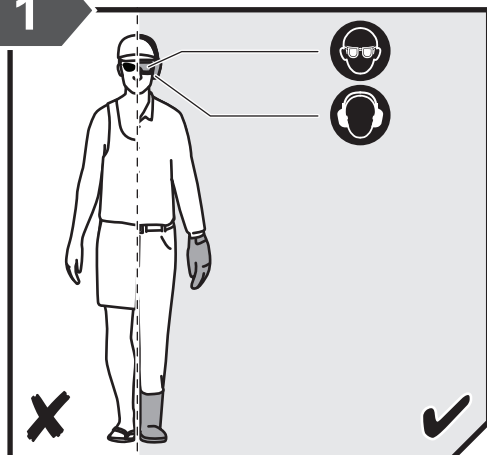
KNOW YOUR PRODUCT

- | | |
|---------------------------|-----------------------------------|
| 1. Rear handle | 6. Charger |
| 2. Variable speed trigger | 7. Charger power supply and cable |
| 3. Lower handle | 8. Boom clamp |
| 4. Battery pack | 9. Front handle |
| 5. Battery latch button | 10. Speed adjustment |



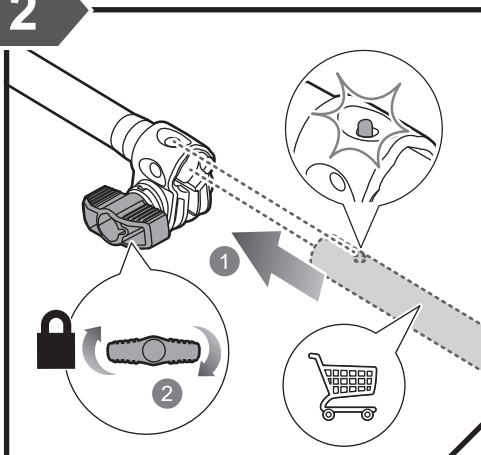
GETTING STARTED

1



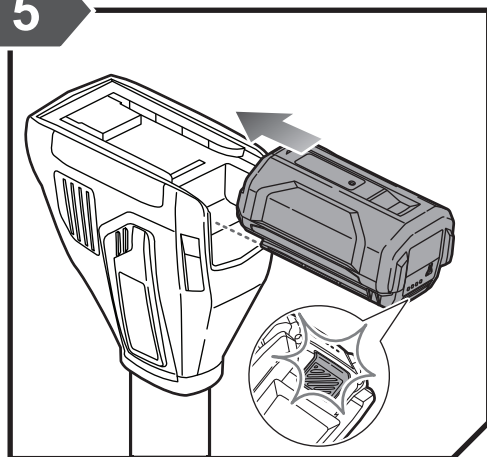
Always wear safety goggles or safety glasses with side shields when operating the product. Wear non-slip, heavy-duty protective gloves. Wear non-skid, protective footwear that will protect your feet and improve your footing on slippery surfaces.

2



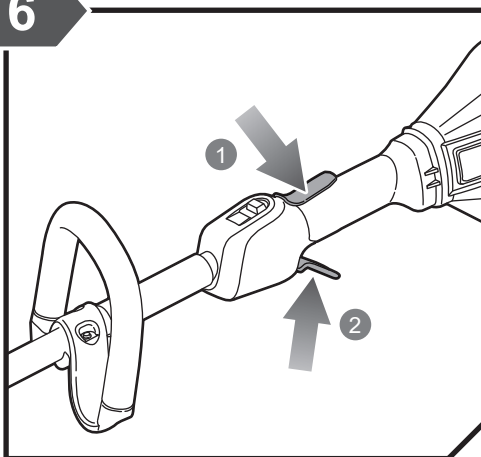
Insert the lower shaft into the upper shaft until the latches snap into place. Tighten the boom clamp to secure.

5



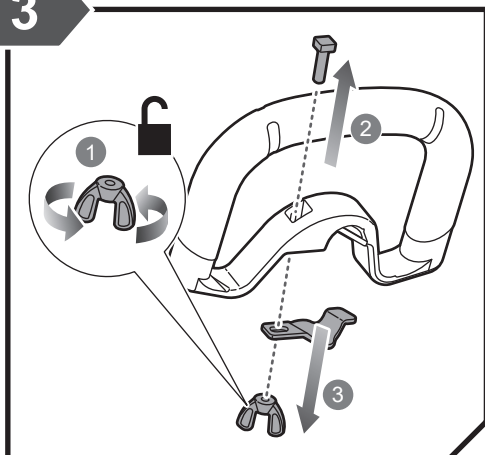
Insert the battery pack until the battery latch button clicks into place.

6



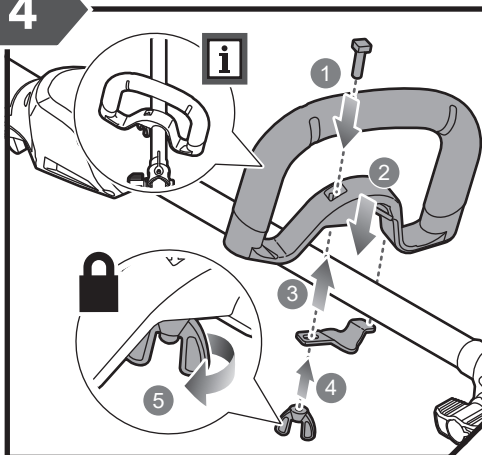
Squeeze the variable speed trigger to operate the product.

3



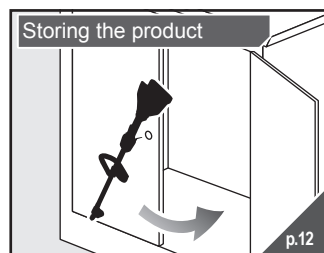
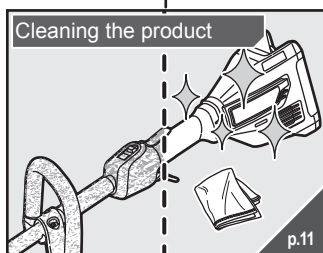
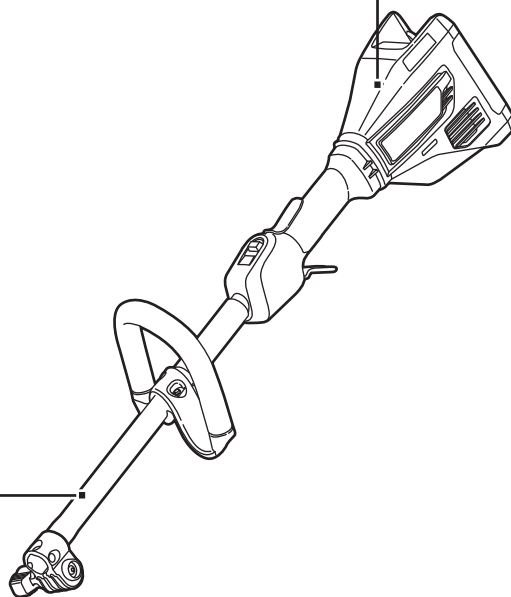
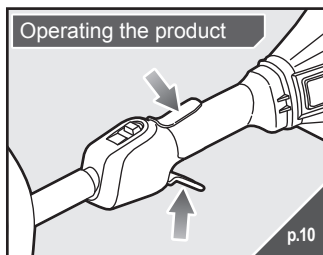
Loosen the wing nut from the front handle. Remove the tab and screw from the front handle.

4

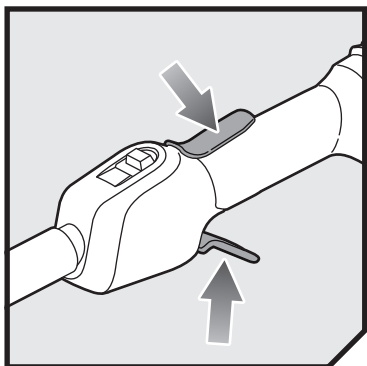


Install the front handle to the upper shaft. Tighten the wing nut to secure the front handle.

OVERVIEW



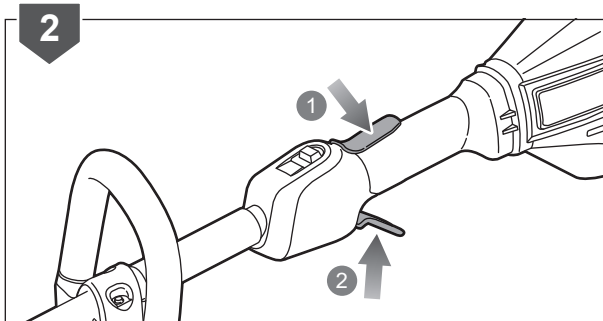
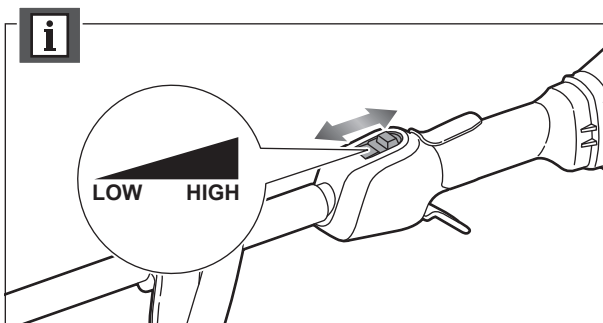
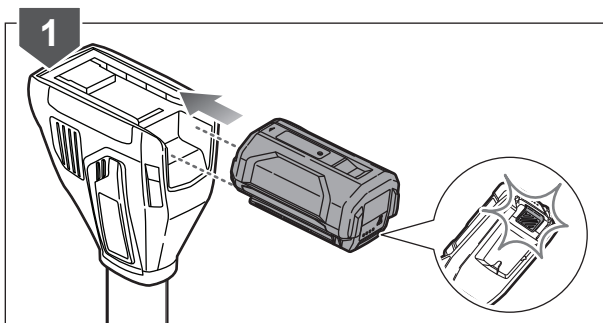
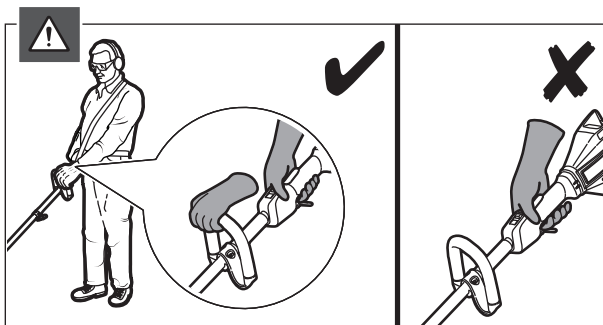
OPERATION



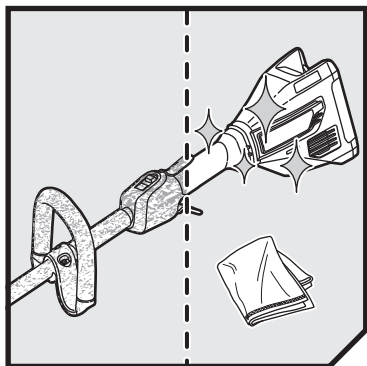
OPERATING THE PRODUCT

WARNING: For safety reasons, the product must be adequately controlled by a two-handed operation. Hold the product with the right hand on the rear handle and the left hand on the front handle.

1. Insert the battery pack until the battery latch button clicks into place.
2. Push the lock-out trigger and squeeze the variable speed trigger to operate the product.



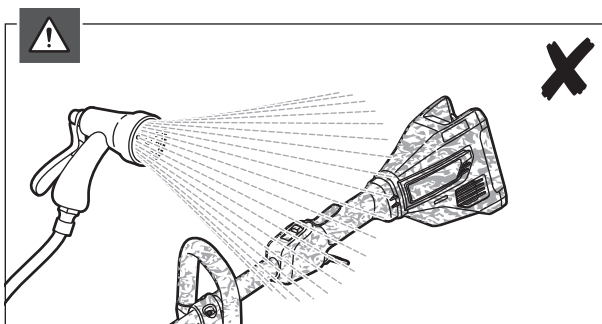
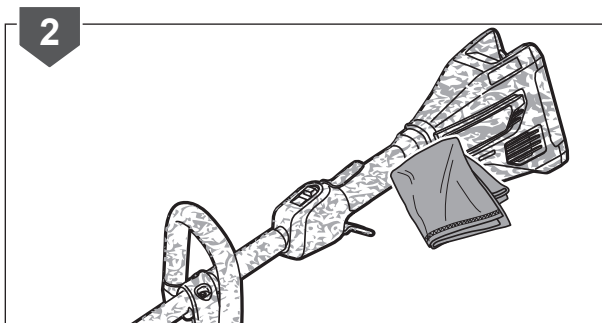
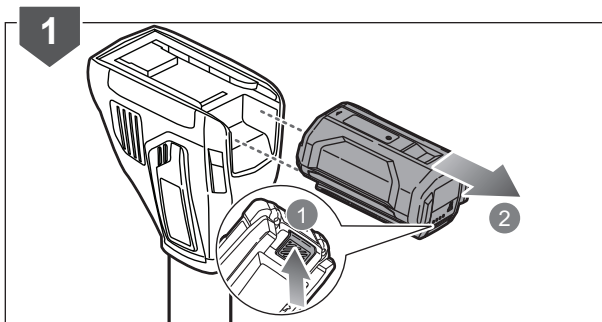
MAINTENANCE



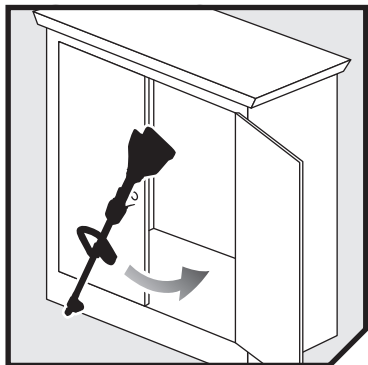
CLEANING THE PRODUCT

1. Press the battery latch button, and remove the battery pack.
2. Clean the product with a soft, dry cloth.

WARNING: Avoid using solvents when cleaning plastic parts. Most plastics are susceptible to damage from various types of commercial solvents and may be damaged by their use.



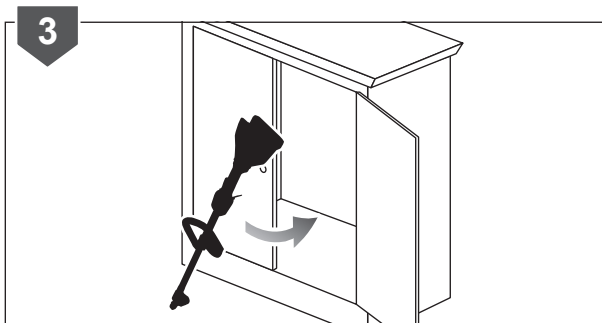
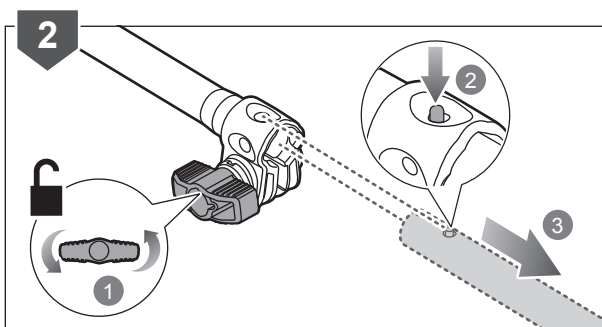
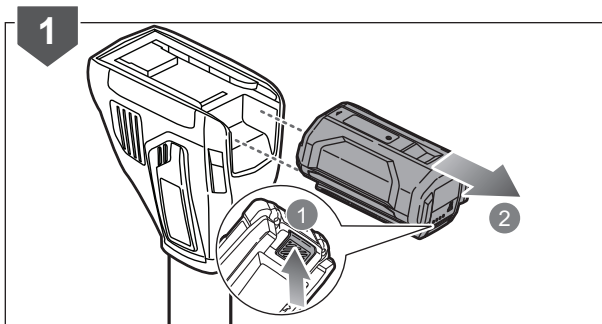
STORAGE



STORING THE PRODUCT

NOTE: Clean the product before storing.

1. Press the battery latch button, and remove the battery pack.
2. Loosen the boom clamp. Push the lock button. Remove the lower shaft from the upper shaft.
3. Store the product in a cool, dry, and well-ventilated place that is inaccessible to children. Keep the product away from corrosive agents, such as garden chemicals and de-icing salts. Do not store the product outdoors.



PRODUCT SPECIFICATIONS

Cordless Brushless Powerhead Kit

Model	RLT3640P
Rated voltage	36 V
Compatible attachments	APR05, ACT05, AHF05, AED05
Maximum weight with heaviest pack and accessory	13.1 kg

For assembling with battery-driven pruner attachment (below values measured with APR05 pruner attachment)

Noise emission values determined according to ISO 22868

A-weighted sound pressure level $L_{pA} = 92.1 \text{ dB(A)}$

Uncertainty $K = 2.5 \text{ dB}$

A-weighted sound power level $L_{WA} = 97.4 \text{ dB(A)}$

Uncertainty $K = 2.5 \text{ dB}$

Vibration values determined according to ISO 22867 (without/ with extension shaft)

Front handle $a_h = 0.3 \text{ m/s}^2$

Rear handle $a_h = 0.5 \text{ m/s}^2$

Uncertainty $K = 1.5 \text{ m/s}^2$

For assembling with battery-driven cultivator attachment (below values measured with ACT05 cultivator attachment)

Noise emission values determined according to EN 709:1997+A4:2009

A-weighted sound pressure level $L_{pA} = 85.6 \text{ dB(A)}$

A-weighted sound power level $L_{WA} = 92.5 \text{ dB(A)}$

For assembling with battery-driven hedge trimmer attachment (below values measured with AHF05 hedge trimmer attachment)

Noise emission values determined according to EN 60745-1 and EN ISO 10517

A-weighted sound pressure level $L_{pA} = 92.5 \text{ dB (A)}$

Uncertainty $K = 3.0 \text{ dB}$

A-weighted sound power level 97.3 dB (A)

Uncertainty $K = 3.0 \text{ dB}$

Vibration values determined according to EN 60745-1 and EN 60745-2-15

Front handle 0.6 m/s^2

Rear handle 0.6 m/s^2

Uncertainty 1.5 m/s^2

For assembling with battery-driven edger attachment (below values measured with AED05 edger attachment)

Noise emission values determined according to IEC 60335-2-91

A-weighted sound pressure level $L_{pA} = 84.2 \text{ dB(A)}$

Uncertainty $K = 2.5 \text{ dB}$

A-weighted sound power level $L_{WA} = 94.3 \text{ dB(A)}$

Uncertainty $K = 2.5 \text{ dB}$

Vibration values determined according to IEC 60335-2-91

Front handle $a_h = 0.5 \text{ m/s}^2$

Rear handle $a_h = 0.5 \text{ m/s}^2$

Uncertainty $K = 1.5 \text{ m/s}^2$

Guaranteed sound power level (with AED05 edger attachment) 100 dB(A)

BATTERY AND CHARGER

Model	RLT3640P
Battery pack	BPL3640D2
Weight	—
Charger	BCL3617S
Compatible battery packs	BPL3626, BPL3626D, BPL3626D2, BPL3640, BPL3640D, BPL3640D2, BPL3650D, BPL3650D2, BPL3620D2, BPL3660D
Compatible charger	BCL3617S, BCL3650F, BCL3617U, BCL3660F



WARNING! The declared vibration total values and the declared noise emission values given in this instruction manual have been measured in accordance with a standardised test and may be used to compare one tool with another. They may be used for a preliminary assessment of exposure.

The declared vibration and noise emission values represent the main applications of the tool. However, if the tool is used for different applications, used with different accessories, or poorly maintained, the vibration and noise emission may differ. These conditions may significantly increase the exposure levels over the total working period.

An estimation of the level of exposure to vibration and noise should take into account the times when the tool is turned off or when it is running idle. These conditions may significantly reduce the exposure level over the total working period.

Identify additional safety measures to protect the operator from the effects of vibration and noise, such as maintaining the tool and the accessories, keeping the hands warm (in case of vibration), and organising work patterns.





*RYOBI is a trademark of Ryobi Limited,
and is used under license.
© 2020 Techtronic Cordless GP.*

Imported by:

Techtronic Industries Australia Pty Ltd
31 Gilby Road, Mount Waverley, VIC 3149,
Melbourne, Australia

Techtronic Industries N.Z. Limited
Unit C, 70 Business Parade South,
Highbrook, Auckland 2013, New Zealand

961087241-01