

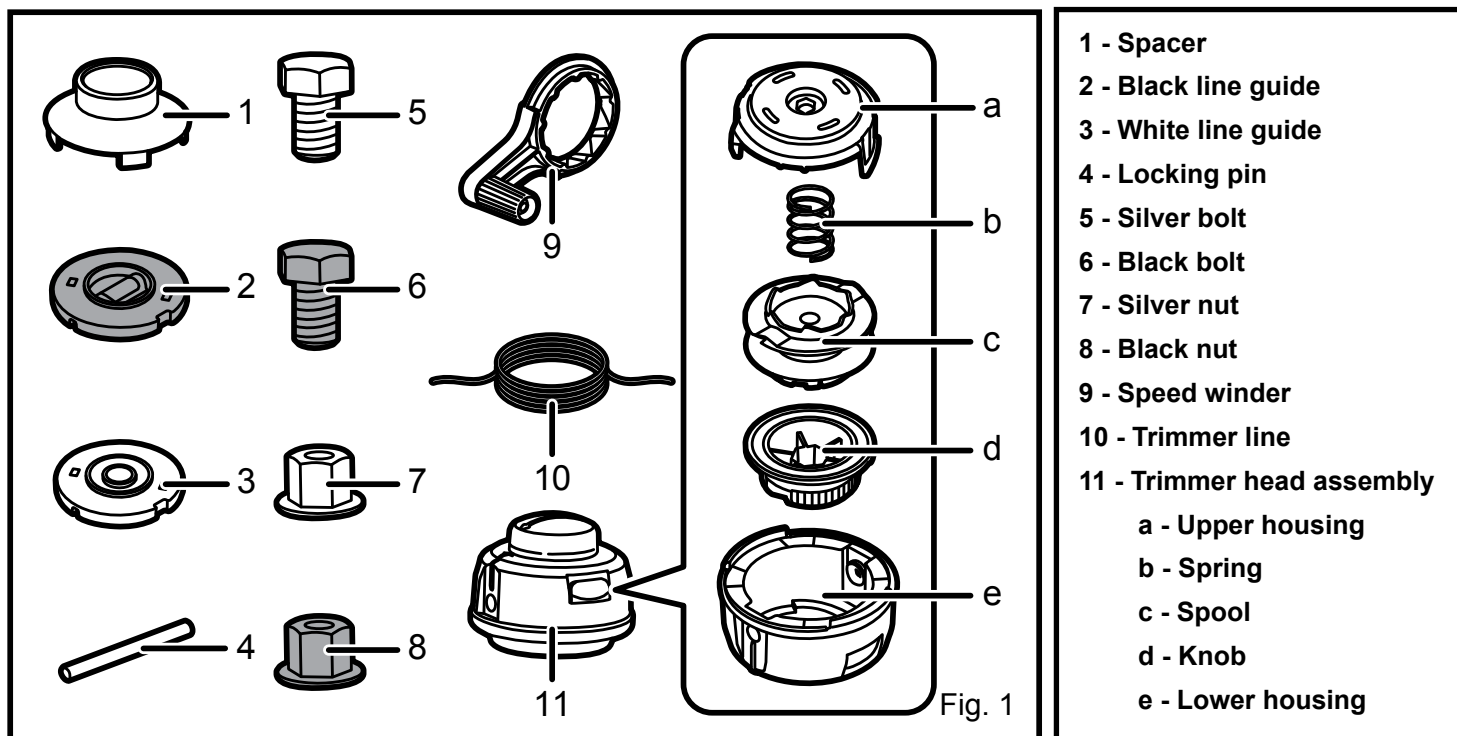


Replacement spool head

RAC1214

▲ WARNING: To reduce the risk of injury, the user must read and understand the operator's manual for the string trimmer before using the accessory. Always wear eye protection with side shields marked to comply with EN 166 along with the hearing protection. Ensure compatibility and proper fit before using this accessory. Stop the string trimmer and remove the battery pack for DC trimmer before changing or adjusting accessories.

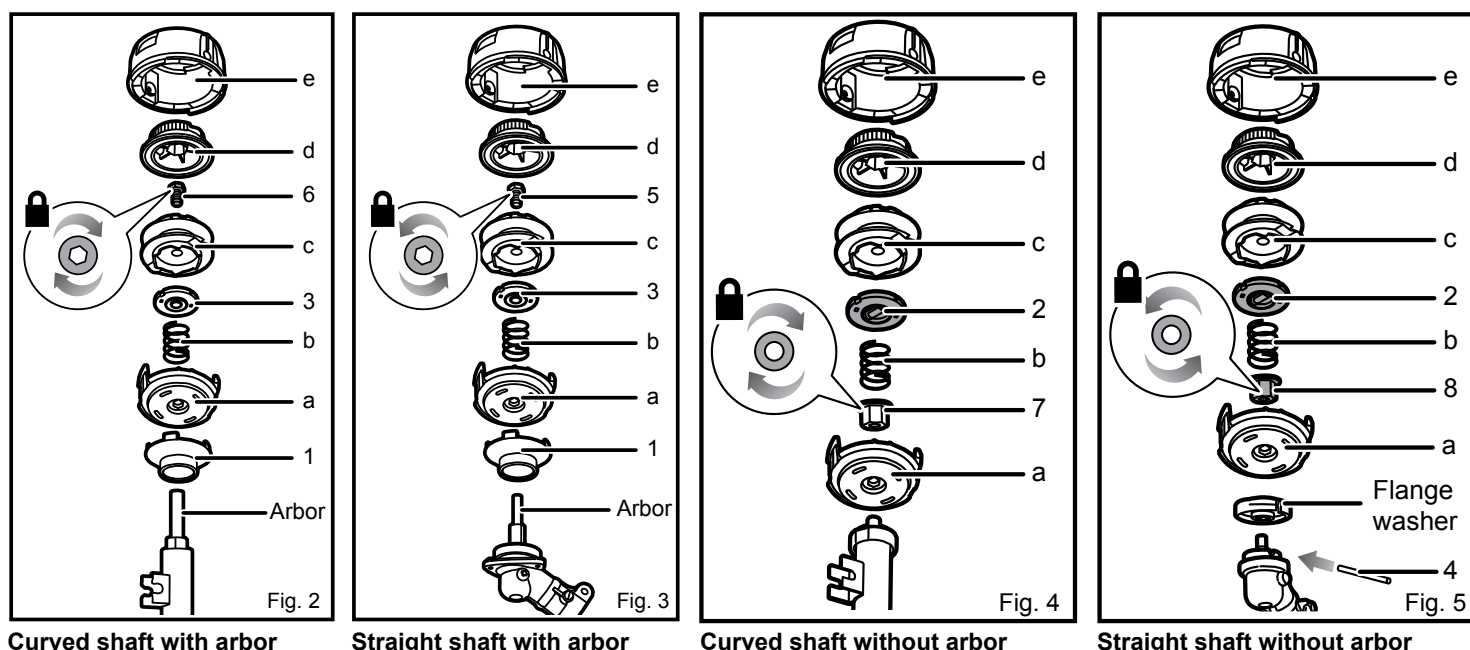
PACKING LIST



INSTALLING THE TRIMMER HEAD

The REEL EASY trimmer head installs differently on string trimmer attachments.

Assembly instructions will vary based on the style and type of attachment.



INSTALLATION CHART

STYLE	TYPE	ITEMS NEEDED FOR INSTALLATION
Curved shaft	with arbor	spacer, white line guide, black bolt, and trimmer head assembly
Curved shaft	without arbor	silver nut, black line guide, and trimmer head assembly
Straight shaft	with arbor	spacer, white line guide, silver bolt, and trimmer head assembly
Straight shaft	without arbor	black nut, black line guide, and trimmer head assembly

For shaft with arbors:

- Install the spacer onto the upper housing.
- Slide the spacer and upper housing onto the arbor.

NOTE

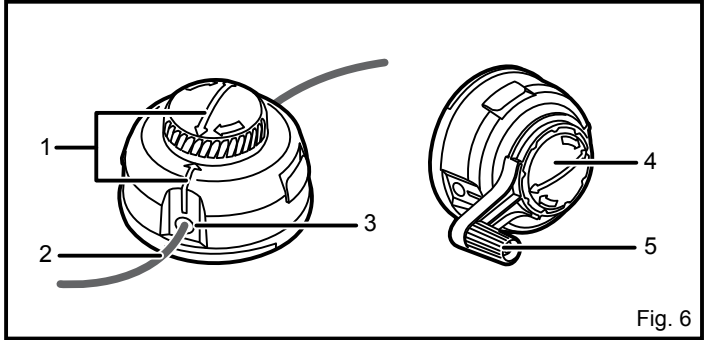
Make sure the arbor is fully seated into the hex-shaped pocket on the spacer before proceeding. An arbor that is not fully seated will cause damage to the upper housing and spacer.

- Place the spring into the upper housing around the arbor and push down to seat.
- Install the white line guide into the spool.
NOTE: When installing, align the keys located on the underside of the guide with the corresponding holes in the spool.
- Insert the spool into the upper housing and onto the arbor.
- Secure the spool in place by pressing it firmly into the upper housing and installing a bolt (M8) into the opening in the arbor. For curved shaft models, install the black bolt and turn clockwise. Make sure the bolt is fully screwed into arbor. Do not overtighten. For straight shaft models, install the silver bolt and turn counterclockwise. Make sure the bolt is fully screwed into arbor. Do not overtighten.
- Align the ribs on the knob with the slots in the spool and place the knob onto the spool.
- Slide lower housing over the knob and onto the upper housing. Push together until the tabs in the upper housing snap into the slots in the lower housing.
- Install line as described in Installing the line.

For shafts without arbors:

- Insert nut (M8), with flange facing outwards, into the hex pocket in the upper housing, then twist the upper housing onto the attachment. For curved shaft models, insert the silver nut and turn the upper housing clockwise. For straight shaft models, insert black nut and turn upper housing counterclockwise. If necessary, use a wrench (not provided) or locking pin to hold the flange washer while tightening the upper housing.
- Place the spring into the upper housing and push down to seat.
- Install the black line guide into the spool.
NOTE: When installing, align the keys located on the underside of the guide with the corresponding holes in the spool.
- Align the ribs on the knob with the slots in the spool and place the knob onto the spool.
- Insert the bump knob and spool assembly through the opening in the trimmer head lower housing.
- Slide lower housing onto the upper housing. Push together until the tabs in the upper housing snap into the slots in the lower housing.
NOTE: Hold the spool by the knob while completing the installation.
- Install line as described in Installing line.

INSTALLING THE LINE



1. Arrows
 2. Line
 3. Eyelet
 4. Bump knob
 5. Speed winder
- Turn off the product and remove the battery pack for DC trimmer.
 - Rotate the bump knob clockwise as necessary to align the arrows on the bump knob with the arrows on the trimmer head housing.
 - Insert the trimmer line into the eyelet on the trimmer head housing. Push the trimmer line until the end of the line comes out on the other side of the housing. Pull the trimmer line until equal amounts of line appear on both sides of the housing.
NOTE: When replacing the trimmer line, do not insert more than 548 cm of line. Line may jam if more than 548 cm is loaded.
 - Either by hand or using the speed winder, rotate the bump knob clockwise to wind the line on the spool until approximately 15 cm of line is showing on each side.
NOTE: After every five to seven revolutions of the speed winder, pull both line ends outwards to tighten the spool for best loading results and to help prevent line from tangling.
 - Push the bump knob down while pulling on line(s) to manually advance the line.

Imported by:
Techtronic Industries (Australia) Pty. Ltd.
31 Gilby Road, Mount Waverley,
VIC 3149, Australia

Techtronic Industries New Zealand Ltd.
2 Landing Drive, Mangere,
Auckland, New Zealand 2022