

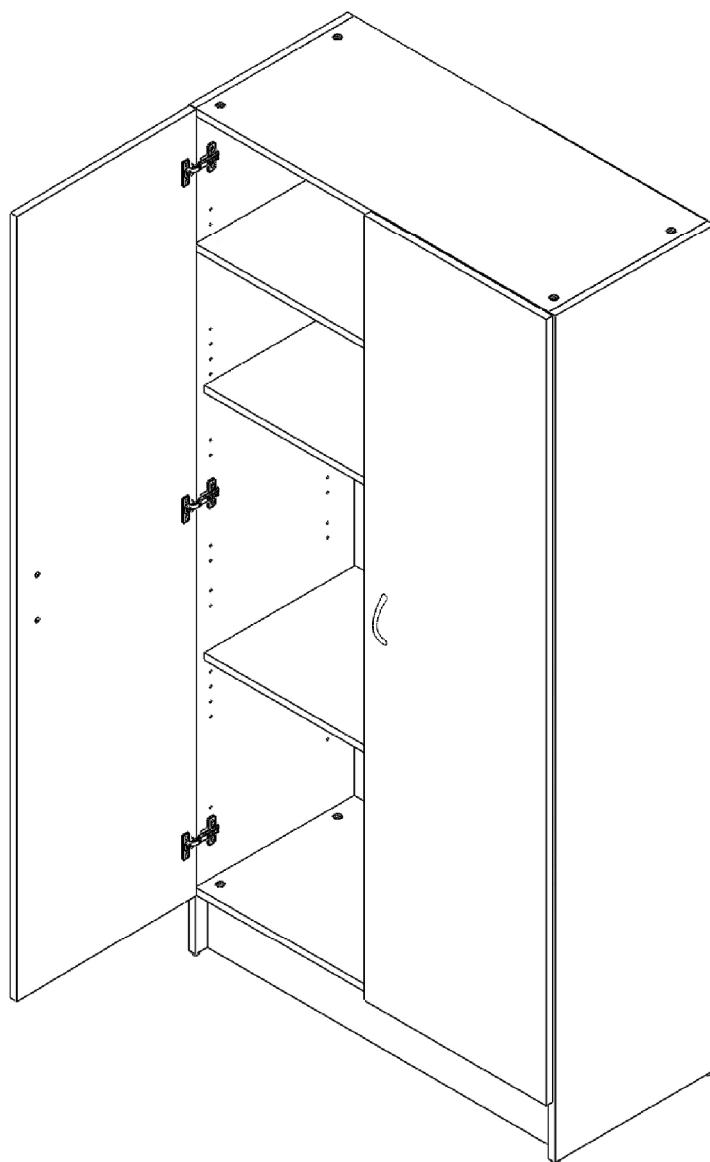
## 2 Door Tall Unit

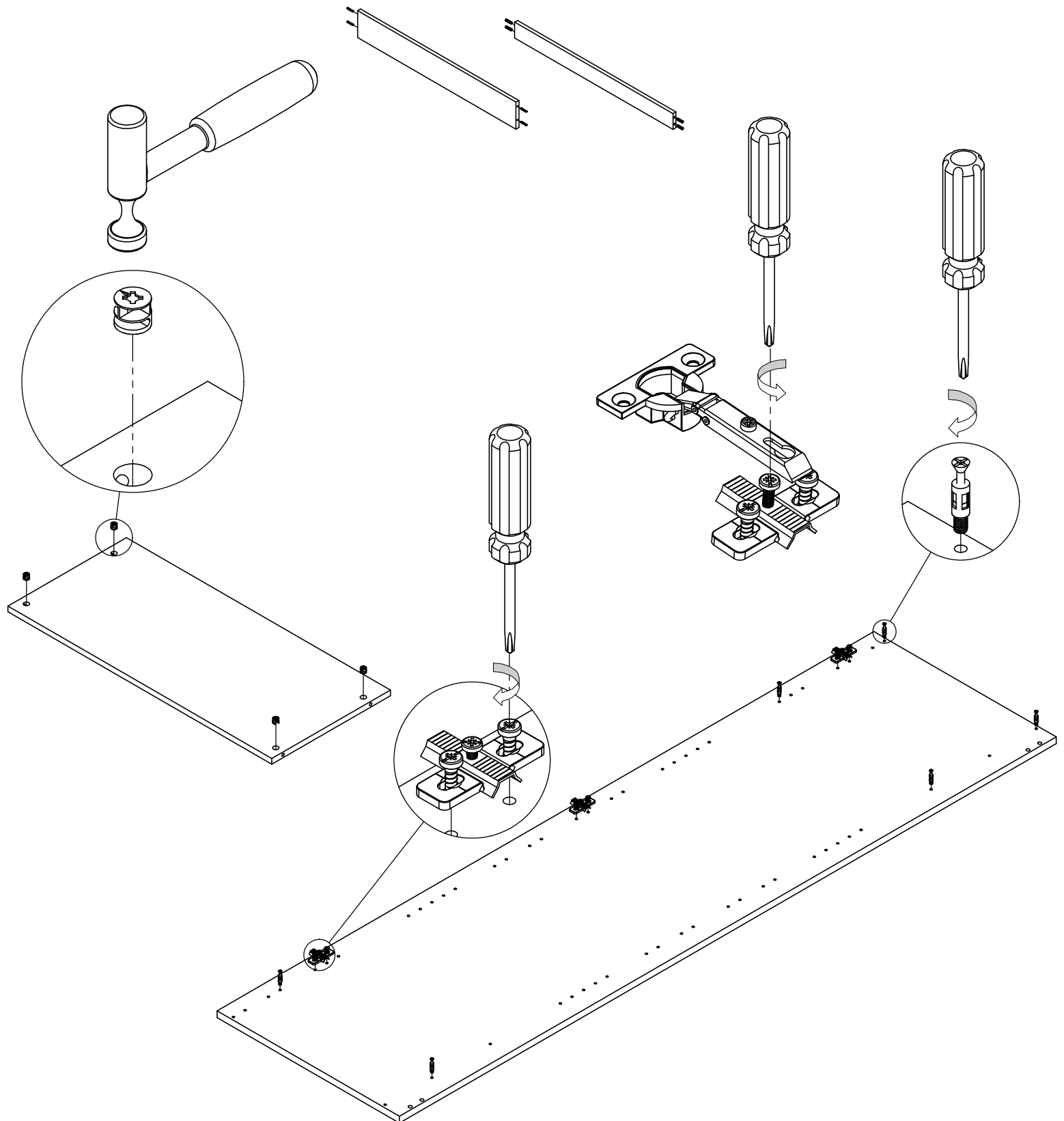
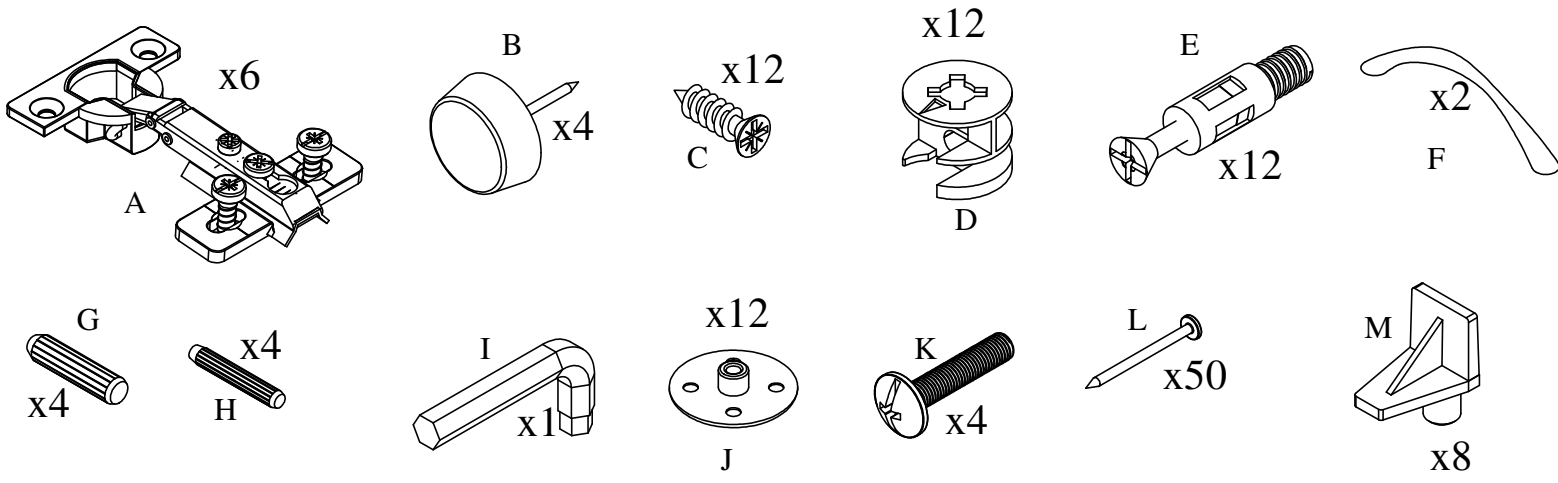
### IMPORTANT

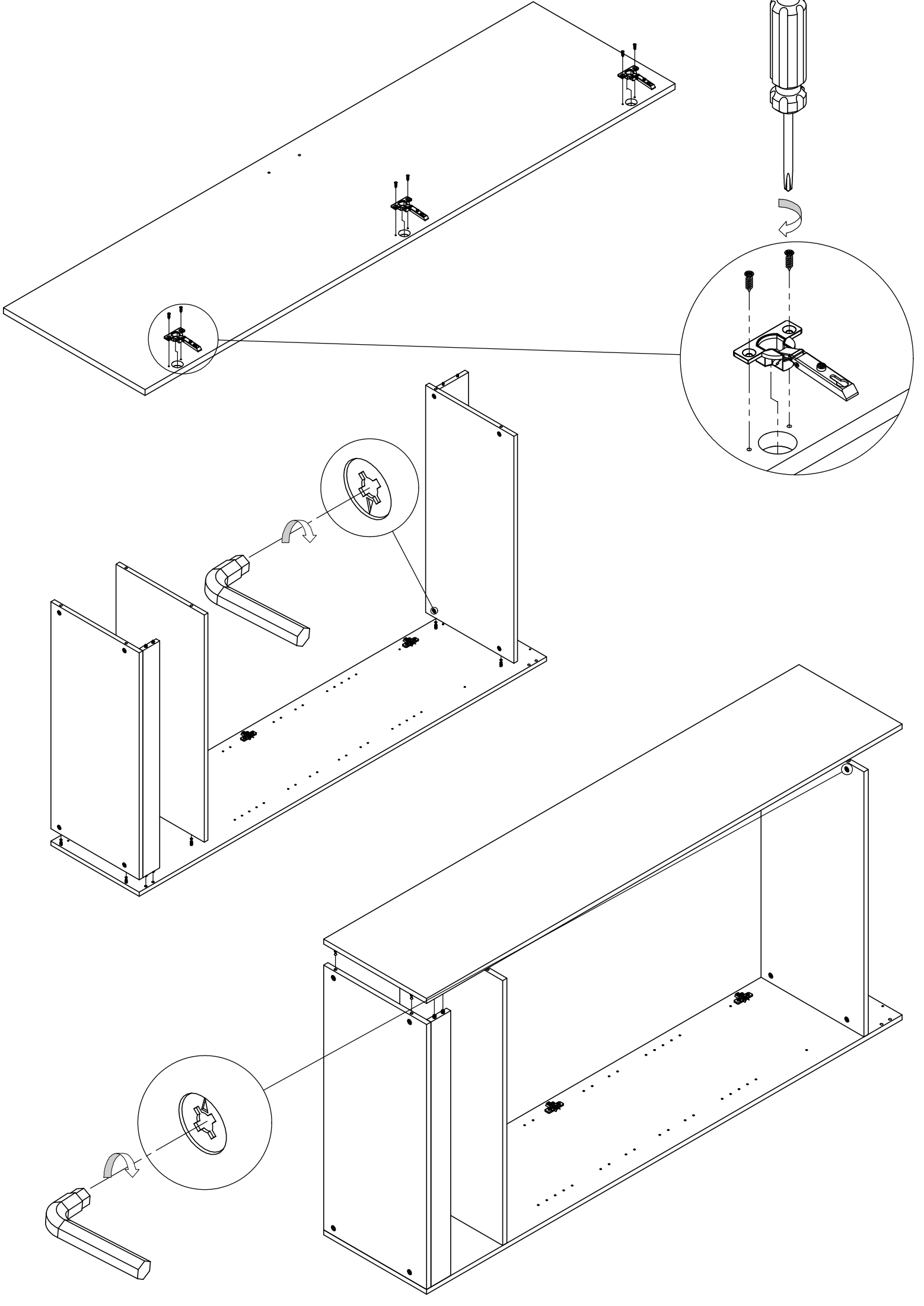
Before commencing assembly:

- Read all instructions **COMPLETELY**
- Hardware kit contains small parts; keep out of reach of children
- Ensure all listed parts are present
- Required tools to assemble:
  - Phillips-head screwdriver
  - hammer
  - wood glue
- Required assembly work surface should be solid, level, clean and flat
- Ensure all melamine edges are facing to the front of the unit

**Customer Services Enquiries 1800 822 823**

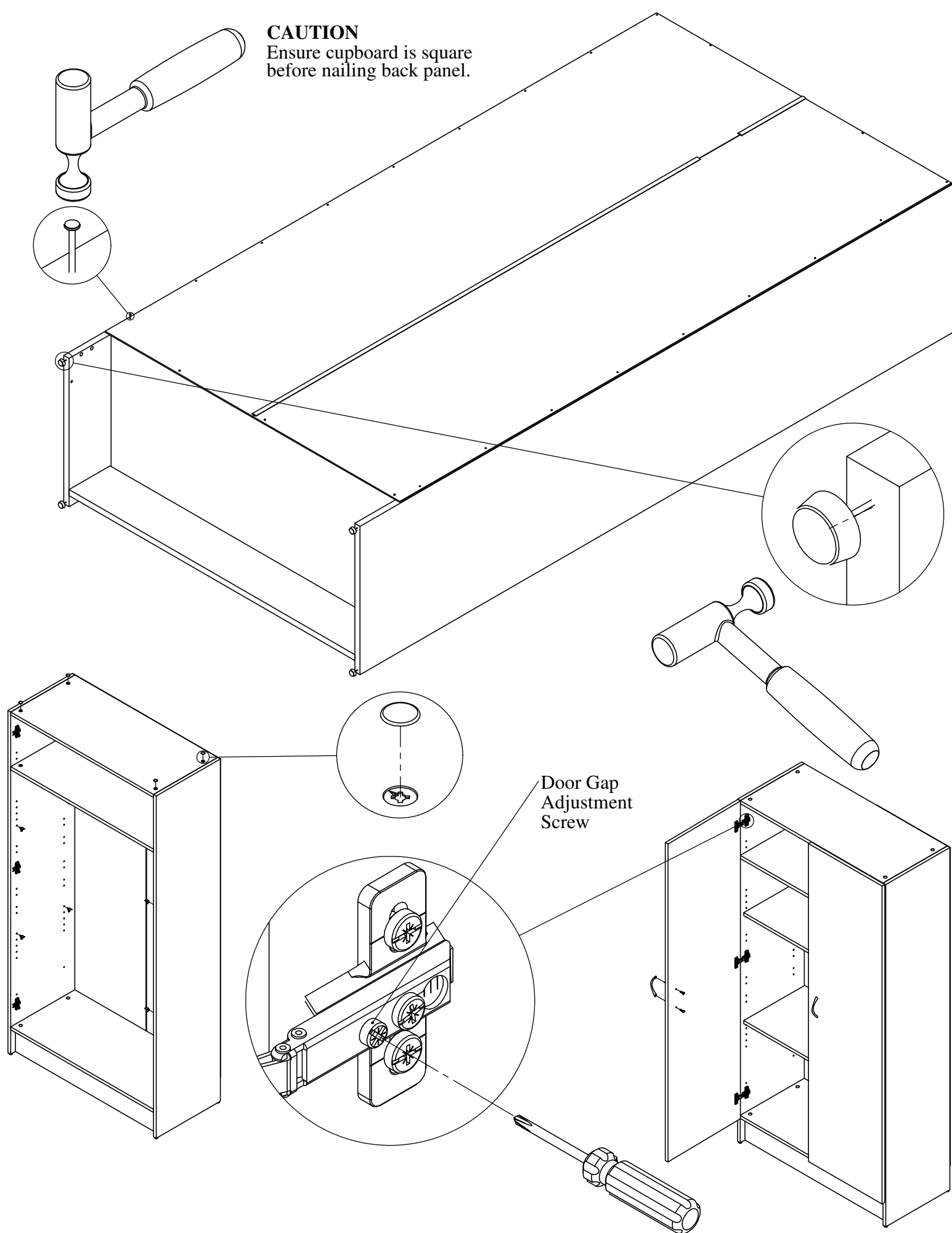






**CAUTION**

Ensure cupboard is square  
before nailing back panel.



It is strongly recommended to secure the unit to the wall, otherwise, it may tip forward when opened empty.

Bedford Furniture is part of the Bedford Group, a South Australian not-for-profit organisation dedicated to enhancing the lives of people with a disability or disadvantage through employment, training, residential services and life skills.