

Hamptons Home Look Book

Inspiration and design
hallmarks to make the
perfect Hamptons home.



Deciding on your own Hamptons Look

The Hamptons style is all about details. This book, now in its second version, was inspired by the hundreds of homeowners, builders and designers who asked James Hardie for help with the details for their Hamptons home.

It doesn't matter if you're building a new home or doing a major or minor renovation, many of the Hamptons details you're about to see can be added to give your home a feel of charm, craftsmanship or glamour.

Use this book like a catalogue and pick out decorative details. Create a vision board for your home and collect the images and descriptions. Discover what you like and love. Then use those images and words to brief your designer or builder, and don't compromise on your dream.

Are there more Hamptons homes in Australia than the Hamptons NY?

Combine the south and north forks of Long Island NY and there are 40,000 households.

In Australia about 9% of new homes are Hamptons style. That's about 10,000 homes a year. Add to that the high number of Australian brick and weatherboard cottages renovated to a Hamptons style.

Yes. There are probably more Hamptons homes in Australia, than in the Hamptons.



Designer: Natalee Bowen / Indah Island

Natalee Bowen

The feel of family and homely living is a big attraction in Hamptons homes. They're designed to have all the family in one room to create conversation.

Walking to the beach and coming back to a home with doors wide open, is the big appeal of the Hamptons. This style has been built for over 200 years, and it has evolved from small, 'beach shacks' and farmlet houses to the grander homes you see today.

The attraction is the neutral colour palette, light and spacious living areas, natural textures, high ceilings and detail throughout, with a major focus on the kitchen.

Living an indoor / outdoor lifestyle screams "Build Me!" for the Australian Lifestyle. There are many styles within the Hamptons. Australia has made its own version with locally made Colorbond roofing and weatherboards by James Hardie. You can find off-the-shelf Hamptons designs from many builders across Australia. Most have the luxury and charm you'd expect.

There's still a need for that Hamptons wow factor which is harder to achieve with the look so widely accepted. So I'm seeing two other distinct styles of Hamptons; traditional and contemporary which you'll see on the following pages. One thing is for sure, the Hamptons Look is here to stay.



Natalee Bowen is a Hamptons expert and ambassador for James Hardie. For more of her Hamptons-inspired style visit indahisland.com

After



Before



Designer: Natalee Bowen / Indah Island

The Three Hamptons Looks



1. Australian Hamptons Look

The Hamptons Look has become an enduring style embraced by Australians*. It has evolved from its coastal origins to suit Australian country and urban settings. It's less ornate and more down to earth than a traditional Hamptons Look. It features larger verandahs for protection in hot summers and is often reminiscent of Queenslander homes.

*BIS Oxford Economics - Exteriors - According to builders and designers (250) in a phone interview it's 9% of what they're building.



2. Traditional Hamptons Look

The Traditional Hamptons Look is pretty, luxurious and highly detailed. It retains more of the American Hamptons influence resulting in classic charm. It suits sprawling homes with complex rooflines and layers of stately decorative details.



3. Contemporary Hamptons Look

With the Hamptons Look becoming mainstream in Australia, those who appreciate its opulence have added bold contemporary touches seeking a higher level of sophistication. Expect big, bold gables and cladding and trims with a black and white contrast. Clean lines are favoured over fussy decoration.

Australian Hamptons Look

Roof Style

A simple roof line with one or two open gables or Dutch gables. Material: Colorbond® steel.

Cladding Style

Linea™ Weatherboards in a 180mm profile with slimline box corners by James Hardie.

Feel & Colour Palette

Stylish yet laid back in an Australian way. Neutral colours for weatherboards and white trims that pop. Greys are popular.

Level of Detail

Basic details. Gable vents, rafter tails and white verandah posts.



Traditional Hamptons Look

Roof Style

Complex roofline multiple open or box gables and cupola. Material: Shingle style roof tiles.

Cladding Style

Linea™ Weatherboards in 180mm or 150mm profile with mitred corners or bold white corners using Axent™ Trim.

Feel & Colour Palette

Charming. Classic. Opulent. Bolder, more colourful neutrals and contrasting white trims.

Level of Detail

Highly detailed. Eaves returns, cladding barge boards, arbors, fretwork, colonial bar windows, and planter boxes etc.

Contemporary Hamptons Look

Roof Style

A bold gable roof line with king post trusses. Material: Shingle style roof tiles or Colorbond steel.

Cladding Style

Linea™ Weatherboards or Stria™ Cladding.

Feel & Colour Palette

Confident colour use. White weatherboards with black trims. Dark charcoal weatherboards with contrasting white trims. Or a white on white colour scheme.

Level of Detail

Pared-back. More focus on form than decoration. Details like gable vents and shutters are absent.



Hamptons Essentials

Gabled Roof

A gabled roof design is where two roof panels are pitched to meet in the centre of a building. Like an inverted V. The gable is the triangular upper part of the wall. In Hamptons homes this is normally clad with weatherboards and features attractive details like windows and vents.

Open gable



Dutch gable



Box gable

Weatherboard Walls

It's ridiculous to try and create a Hamptons style with brick or weatherboard walls. It's all about having a timber look and the feel of craftsmanship. Fortunately, this can be achieved with modern, durable fibre cement weatherboards. Linea™ Weatherboards from James Hardie are 18mm thick and give a distinctive, sharp, uniform shadowline that looks both traditional and contemporary.

Linea™ Weatherboards 180mm
in Dulux Snowy Mountains
Quarter.



Contrasting Trims

Much of the Hamptons curb appeal comes from the interplay between the muted colour of the weatherboards and the contrast created by crisp white trims and architectural features. Window and door frames should be fattened up with timber molding or durable fibre cement Axent™ Trim. The 89 x 19mm size is ideal.



Front and Back Verandahs

The Hamptons style encourages outdoor entertaining. For a traditional Long Island Hamptons home this would be around the pool or on a sprawling lawn. In Australia, we need the shade cover of a veranda. A front veranda may be of little use, but it's important to make your home welcoming. A more private rear veranda should be generous and encourage indoor outdoor living.





Outdoor Furniture

Hamptons is about relaxing and having an outdoor lifestyle. Outdoor furniture should be crisp white to match the trims. It's hard to go past a set of laid back Adirondack Chairs with cushions. White deck chairs with navy canvas can also work well.

Nautical Theme

The Hampton's refers to a group of seaside townships on Long Island New York. That's where the nautical theme comes from. Interior walls are normally crisp white. They're a canvas behind styling pieces in ocean colours: navy, duck egg blue, whites and soft greys.



Roof Details

Shingle style roof tiles suit a Traditional Hamptons Look. These can be slate, terracotta or concrete depending on your budget. One roof material you'd never see in the Hamptons of Long Island is corrugated steel roofing. Corrugated steel is undoubtedly an Australian Hamptons Look. It has a beautiful fit with coastal, country and urban weatherboard homes.

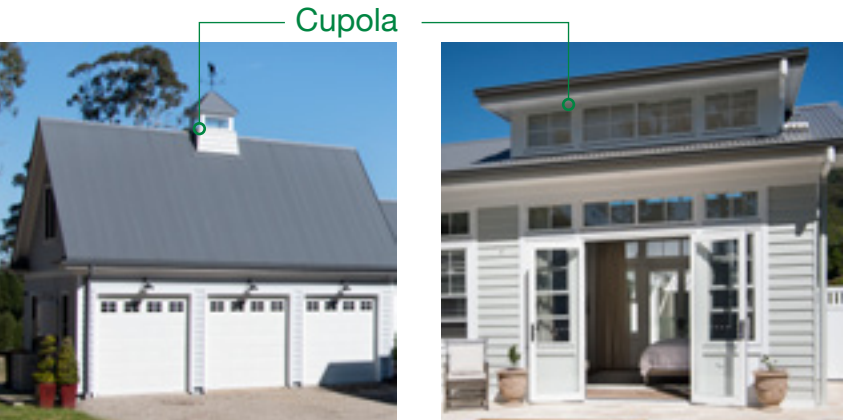
Corrugated steel roofing

Shingle style roof tile



Cupolas

A beautifully symmetrical gable roof should be elevated and without eaves. It should be high set with a pitch of 35 to 45 degrees using corrugated steel sheets, not tiles.



Gable Details

In Hamptons homes, gables are a defining aesthetic. Open gables can be detailed in a variety of ways. Round or rectangular gable vents are a cost-effective addition. Cladding can be changed from Linea™ Weatherboards to Hardie™ Flex flat sheet detailed with contrasting white Axent™ Trims. On trend gable details include round windows and King Post trusses (pictured).

Open gable with round window detail



Open gable with King Post trusses



Eaves

Normally eaves are unremarkable. But with the Hamptons style they can be detailed to add beauty and craftsmanship. A nice way to detail eaves is with the look of jointed timber which can be achieved easily with Hardie™ Groove sheets. Down lights can be a nice feature in eaves too.

Hardie™ Groove Lining



Eaves Returns

Three years ago only few knew what an eaves return was. Today, this is a common detail on new Hamptons homes. It's a great way to visually separate the gable part of a weatherboard wall.

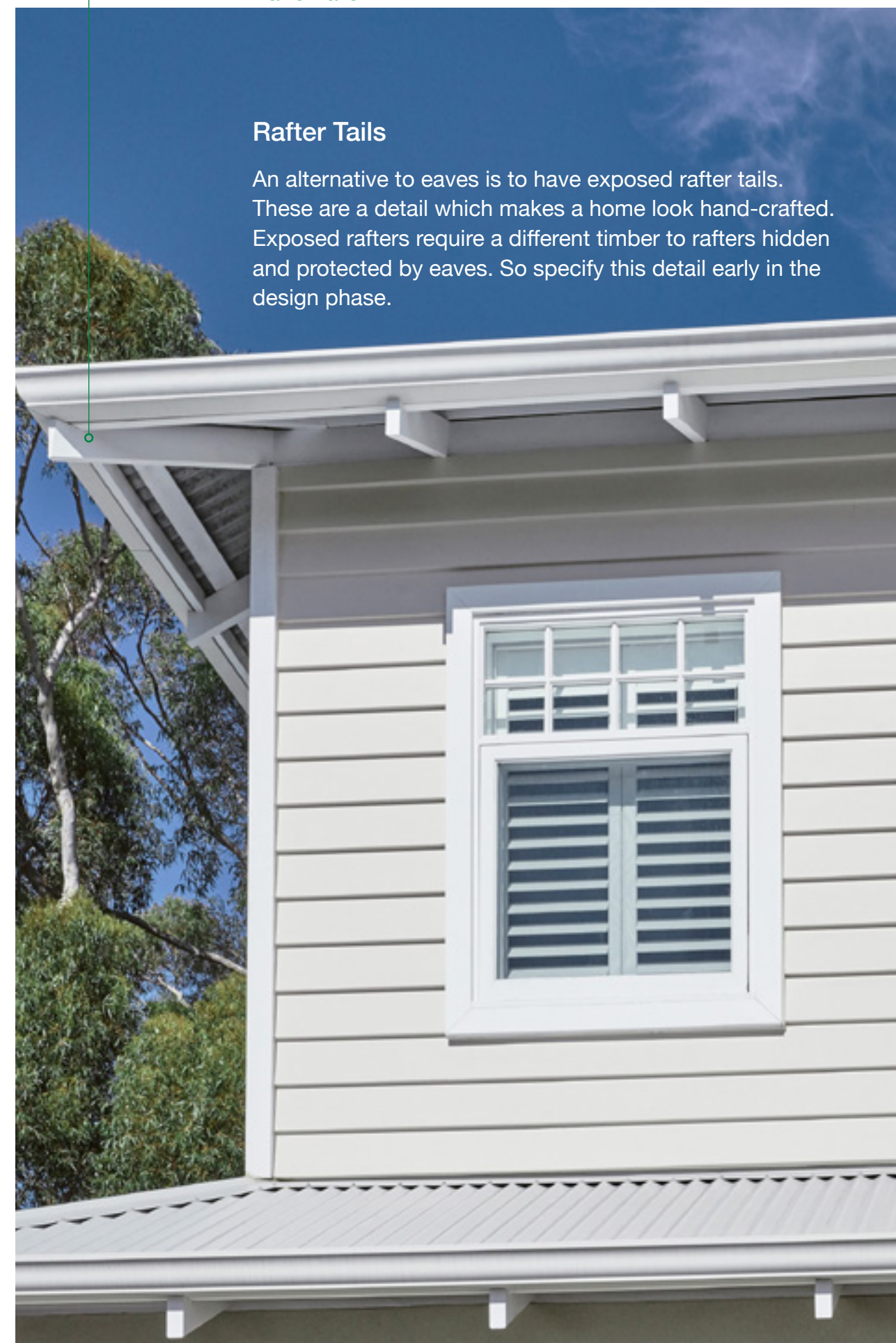
Eaves return



Rafter tails

Rafter Tails

An alternative to eaves is to have exposed rafter tails. These are a detail which makes a home look hand-crafted. Exposed rafters require a different timber to rafters hidden and protected by eaves. So specify this detail early in the design phase.



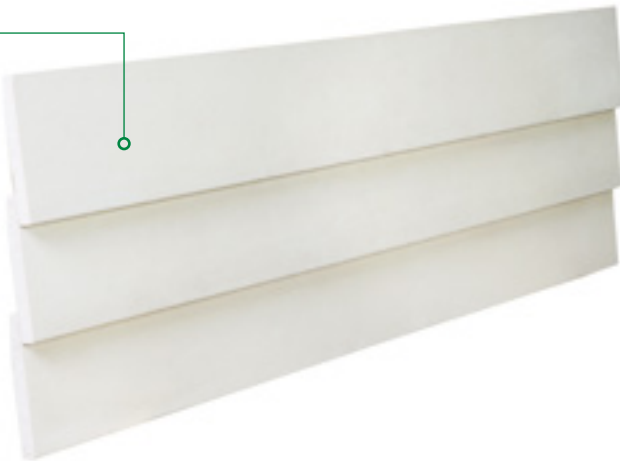
Building with Linea™ Weatherboards

Linea™ Weatherboards are not timber. They're made from fibre cement so they're perfectly straight and smooth.

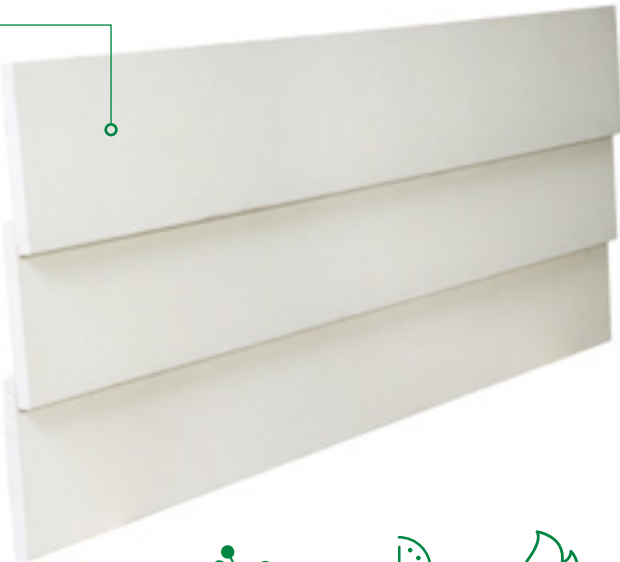
They come with a fresh coat of paint primer so only top-coat painting is necessary.

When installed the board above overlaps the board below by 30mm. They are nailed on inside this overlap to reduce nail head filling and patching. The backside of the boards are beveled to sit solid and flush with the frame.

Linea™ Weatherboards 150mm



Linea™ Weatherboards 180mm



Linea™ Weatherboards 180mm in Dulux Snowy Mountains Quarter.



Speed of installation



Fire resistant



Timber look

Walls and Weatherboards

Linea™ Weatherboard

Linea™ Weatherboards provide the charm and craftsmanship of timber without the worries. Timber weatherboards can warp, swell, split, rot and suffer termite damage. Things you won't have to worry about with Linea™ Weatherboards. They're also resistant to damage from moisture and fire. They can be used for bushfire construction up to Bushfire Attack Level BAL40. Fibre cement is more stable and holds paint better than timber, so you can be confident painting it contemporary dark colours.

Linea™ Weatherboard 180mm



Linea™ Weatherboard 150mm

Belly Board

A belly board is a contrasting trim often used with cladding as a horizontal dividing line. It can be used to aesthetically separate one storey from another or separate a wall from a gable. If you have a large wall and a steeply pitched roof with a large gable a belly board can break up the large expanse.

Belly board



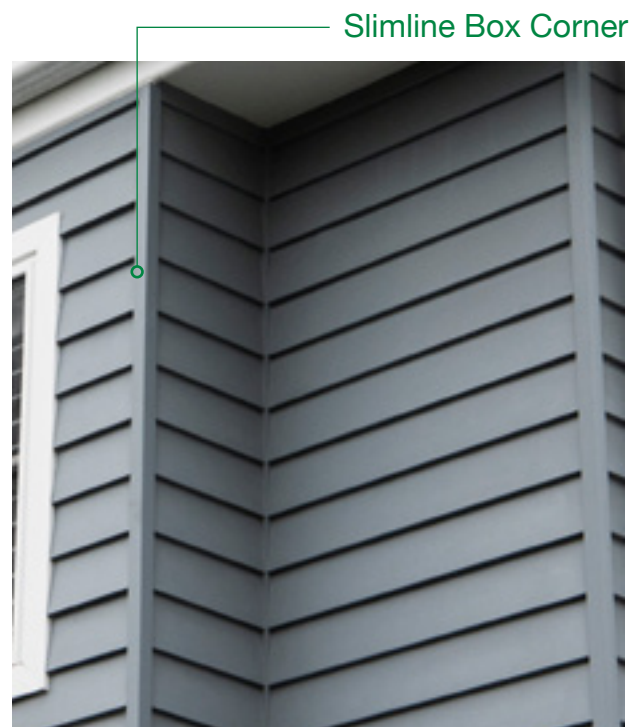
Weatherboard Corners

Axent™ Trim Corner

Weatherboards can be butted into vertical trim as a feature. This is sometimes called a weatherboard stop. Trim pieces can be painted contrasting colour to nicely frame weatherboard walls. Two pieces of Axent™ Trim, a 38 x 45mm and 89 x 38mm trim can be used to form a nice wide trimmed corner.

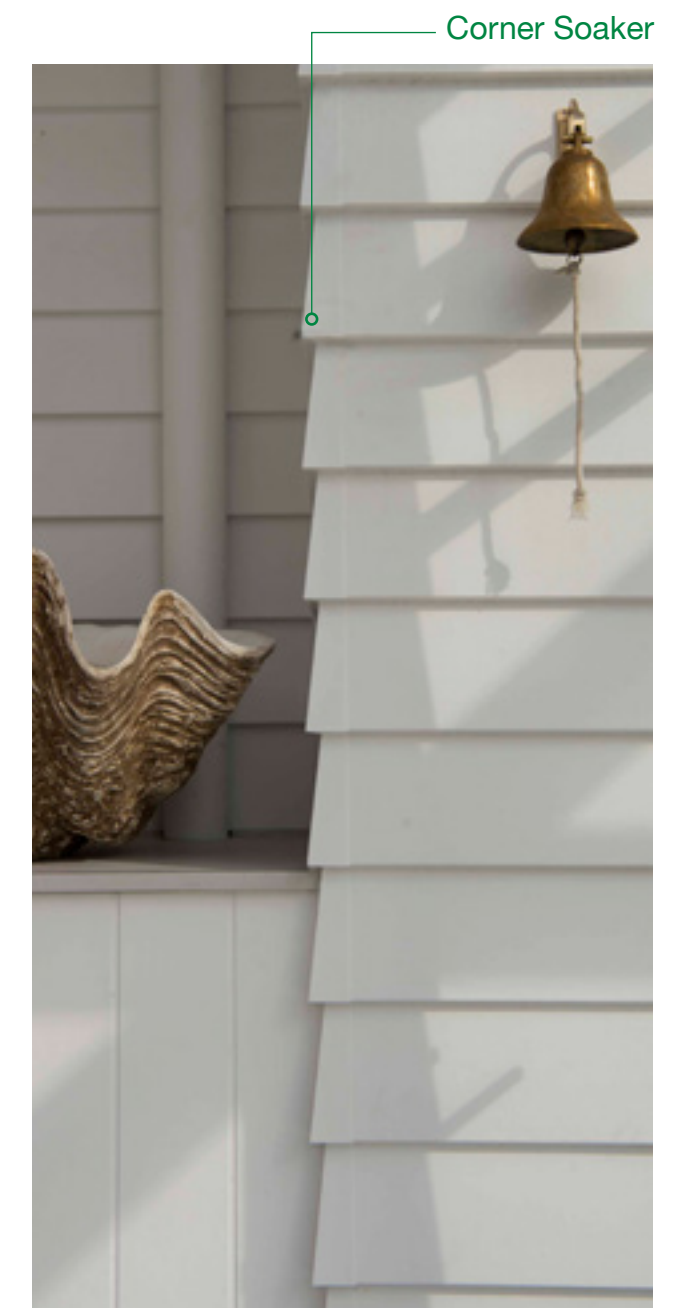
Slimline Box Corner

If you don't want to make a feature out of the corners, a subtle slimline box corner accessory can be used and painted the same colour as the weatherboards.



Corner Soaker

Another nice detail for corners is with a corner soaker. This is an easy way to create the look of a mitred corner.

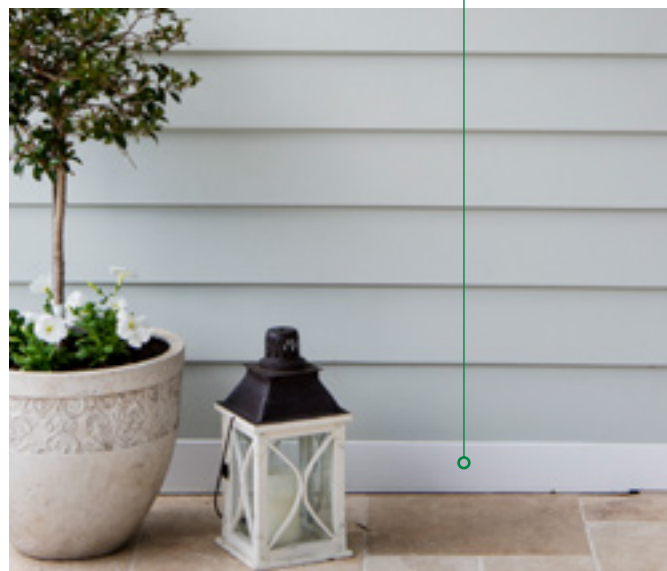


Decorative Trim

Slab Edge Cover

Linea™ Weatherboards must be installed with a minimum clearance of 150mm from the earth on the exterior of a building which sometimes reveals an unattractive cement slab. Hardie™ Edge is an architectural slab edge cover. An attractive finishing touch and another trim options.

Slab edge cover



Balustrades

If you have an elevated veranda consider a diagonal pattern to add variation to the inevitable horizontal and vertical lines created by the weatherboards and posts.

Decorative balustrade



Fretwork & Porch Posts

Timber fretwork can be used to decorate eaves, gables, verandahs, balustrades and porticos. It gives a classic hand-crafted feel to the façade. Porch posts can be dual or single posts. They can be plain or decorative. Used in combination with fretwork to create stunning facades and front entrances.

Fretwork & porch posts



Diagonal pattern in balustrade





Window & Door Trims

Axent™ Trims by James Hardie are a durable choice around windows and doors. The 89mm wide sizes suit the wide contrasting trims of the Hamptons style. Made from fibre cement it won't warp, split or crack and it's resistant to termites, fire and damage from moisture.

Soffits

Verandas and alfresco areas are ideal for the indoor outdoor Hamptons lifestyle. Soffits, veranda ceilings, can benefit from the vertical joint look using Hardie™ Groove Lining. Soffits can include skylights lined up with interior windows, to bring natural light indoors, and ceiling fans or outdoor heaters for use all-year-round.

Hardie™ Groove Lining



Interiors for Socialising

Hamptons homes bring people together in open plan living areas. Family and friends should congregate around the kitchen island bench tops as food is being prepared. Then head to outdoor settings for lunch. Or sit around a large dining table for dinner.

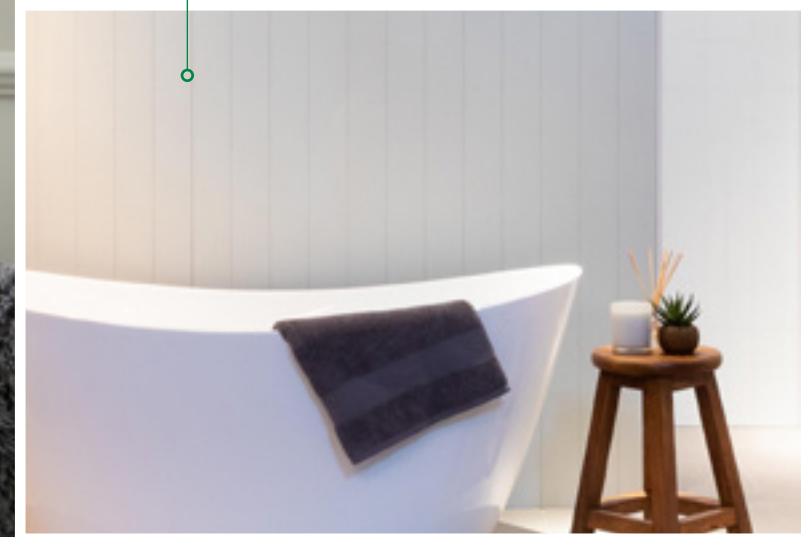
High ceilings, prominent detailing and feature kitchens are hallmarks of the Hamptons style. Commonly used materials are wood flooring, Carrara marble bench tops and vertical joint wall panels (Hardie™ Groove). Living areas need to be neutral tones with pops of blue and white. Indoor plants help bring a natural element into the space. Then beautiful fabrics and eclectic pieces bring a homely feel to rooms.



Interiors for Sanctuary

Lighting brings your home to life, it creates the mood and it's a reflection of status. Start with wall sconces either side of the entry. They also work well either side of the bathroom mirror or repeated along a hallway. Put a chandelier in the powder room. Use beautiful pendants in the bedroom and 2 or 3 above the island bench in the kitchen. Use lamps on side tables and consoles to bring designer detail.

Hardie™ Groove Lining



Loving the Hamptons Look?

Now you've seen the hallmarks of the Hamptons Look. Here are some real examples. Click on the links to see more pictures and read the stories behind each of these beautiful homes.

Traditional Hamptons



Mount Kembla NSW

New build

Builder: Lime Constructions.

An authentic Hamptons haven for a growing family.

[Find out more](#)



Bowral NSW

New build

Hamptons in the highlands: Building the Hamptons dream.

[Find out more](#)



Port Macquarie NSW

New build

Builder: Shipway Constructions. Heavenly Hamptons - a coastal sea change to an award-winning home. [Find out more](#)

Australian Hamptons



Toodyay WA

Renovation

Designer: Indah Island.

Defining Australian Hamptons. Natalee Bowen's Toodyay Farm Renovation.

[Find out more](#)



Fremantle WA

Renovation

From renovation to relaxation: creating a special family forever home.

[Find out more](#)



Northern Beaches, NSW

New build

How Milly nailed the dream home look. [Find out more](#)

Contemporary Hamptons



Seaforth NSW

New build

Builder: Futureflip.

Beautiful Hamptons duplex withstands the harsh Aussie climate. [Find out more](#)



Bulimba QLD

New build

Designer: Big House Little House.

Builder: JH Dixon.

A forever home in a Hamptons style.

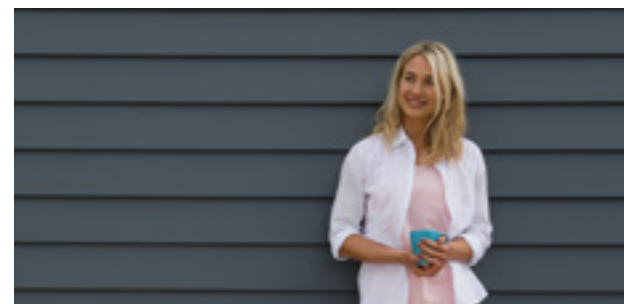
[Find out more](#)

Modern Cladding

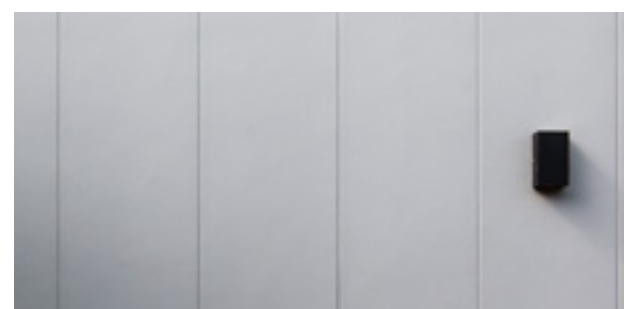
Fibre Cement looks like vertical joint timber and weatherboards yet it's fire resistant and resistant to damage from moisture and termites.



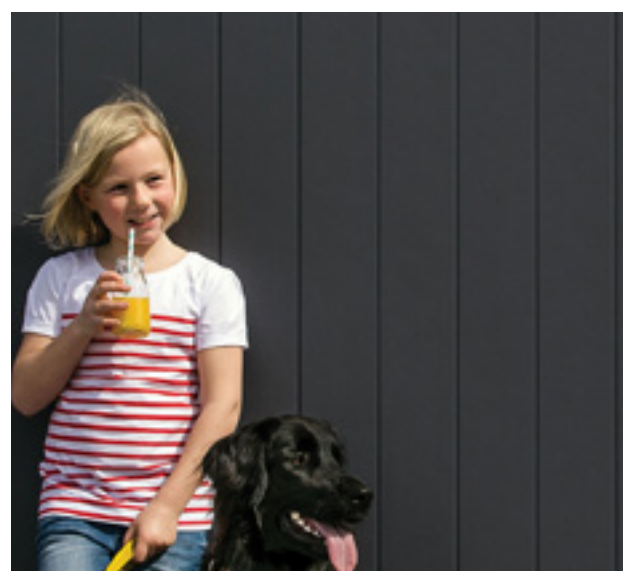
Linea™ Weatherboard 150mm
16mm thick Scyon™ Formulation.



Linea™ Weatherboard 180mm
16mm thick Scyon Formulation.



Axon™ Cladding 400mm Smooth
400mm groove spacing. Smooth texture.



Axon™ Cladding 133mm Smooth
133mm groove spacing. Smooth texture.



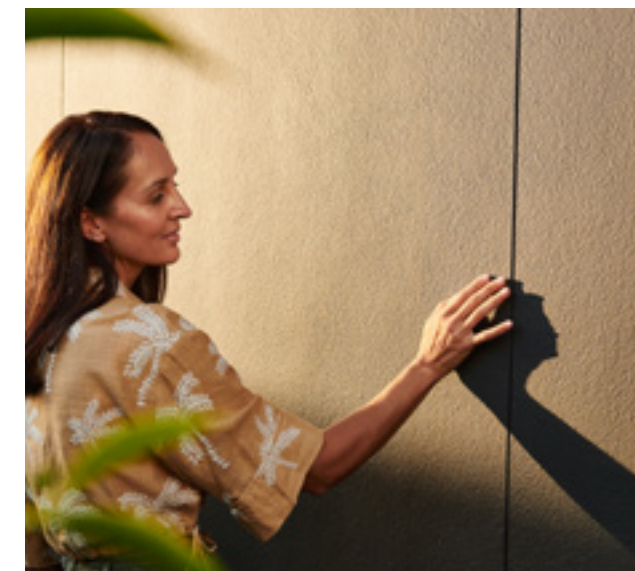
Axon™ Cladding 133mm Grained
133mm groove spacing. Wood grain texture.

Visit the [External Cladding](#) page for sizes, pictures & installation guides.

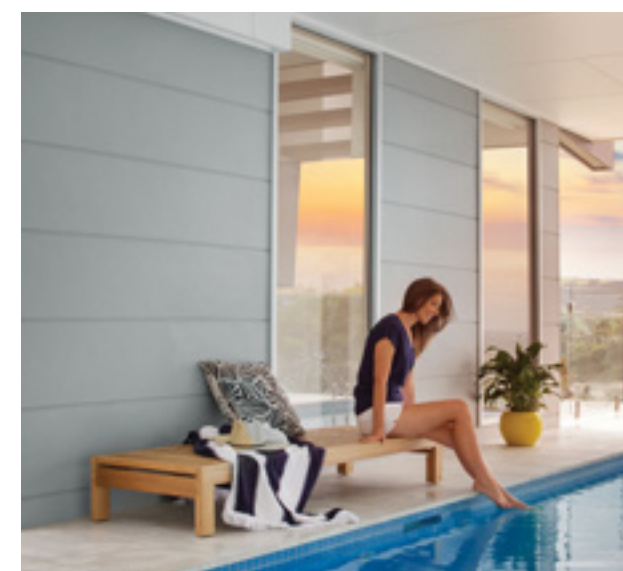
It can also look like panels or a rendered brick wall without the need for a bricklayer and cement render tradesmen.



Stria™ Cladding 325mm
15mm grooves 300mm apart.



Hardie™ Fine Texture Cladding
Pre-finished with a fine grain render.



Stria™ Cladding 405mm
15mm grooves 380mm apart to look like raked rendered masonry.



Matrix™ Cladding
Horizontal layout with joints painted black.

Product comparison table

 Find out more about [Fibre Cement](#).

James Hardie’s range of fibre exterior cement products

Got the look? Now get the products and specs you need to make it happen

James Hardie designed fibre cement products	Thickness	Exterior	Interior	Eaves or Soffits	Timber Look	Render or Cement Look	Panel Look	Hamptons or Traditional Look	Modern Contemporary Look
Linea™ Weatherboard 180mm &150mm	16mm	•			•			•	•
Axon™ Cladding 133mm Smooth & Grained	9mm	•	•	•	•				•
Axon™ Cladding 400mm Smooth	9mm	•			•				•
Stria™ Cladding 325mm & 405mm	14mm	•	•			•			•
Matrix™ Cladding	8mm	•					•		•
ExoTec™ Façade Panel & Fixing System	9mm	•				•	•		•
Hardie™ Fine Texture Cladding	8.5mm	•				•	•		•
EasyLap™ Panel	8.5mm	•					•		
Hardie™ Flex Sheet	4.5 & 6mm	•		•			•		
Hardie™ Groove Lining	7.5mm		•	•	•			•	•
PineRidge™ Lining	6mm		•	•					
Villaboard™ Lining	6 & 9mm		•	•					
Versilux™ Lining	4.5 & 6mm		•	•			•		•
Hardie™ Deck Decking	19mm	•							•
Secura™ Flooring Interior & Exterior	19 & 22mm	•	•						



This Hamptons Home Look Book is provided for general information purposes only and is not intended, in any way, to be advice on any subject (including, but not limited to, in relation to the Building Code, Council approvals, finance and or safety).

James Hardie provides no warranties whatsoever in relation to the accuracy of the information set out herein and, to the extent permitted by law, disclaims all liability from any actions taken or not taken in reliance on any material set out within this guide. James Hardie makes no representation whatsoever in relation to any third party products or services mentioned in this guide. You must make your own enquiries.

Copyright © 2021 James Hardie Australia Pty Ltd
ABN 12 084 635 558™ and ® denotes a trademark or registered mark owned by James Hardie Technology Ltd.

Dulux® Colorbond® and Watty!® are registered trademarks of their respected owners.

For information and advice
call 13 11 03 | jameshardie.com.au

