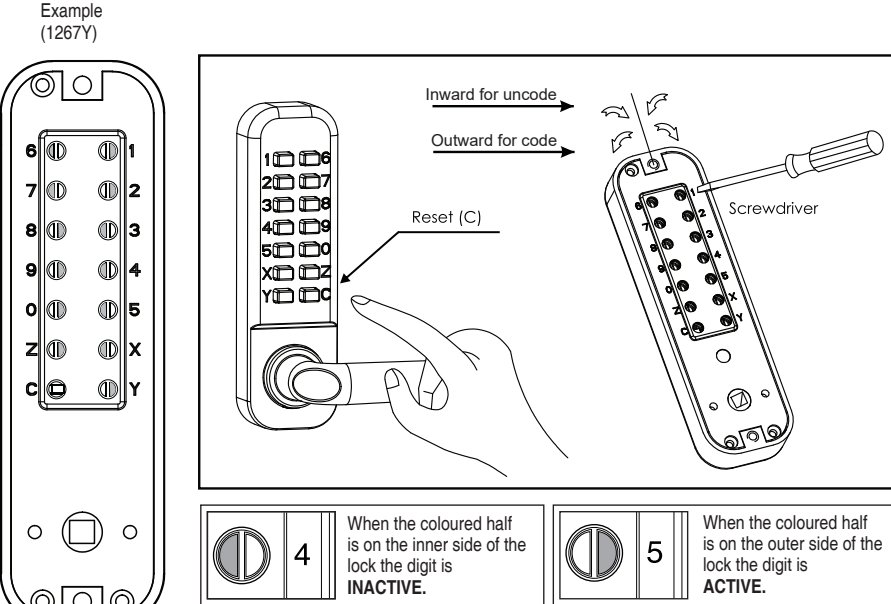


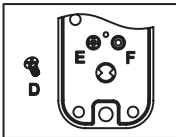
Setting the code

1. Preset codes are not provided by manufacture.
2. To set desired passcode, use screwdriver to turn RED DOT with the selected code outward 180 degrees. A combination of 4-6 figures for a passcode is recommended.
3. To clear a passcode, use screwdriver to turn RED DOT with unwanted code inward 180 degrees.
4. Remember: Press "C" button first and then passcode to unlock.

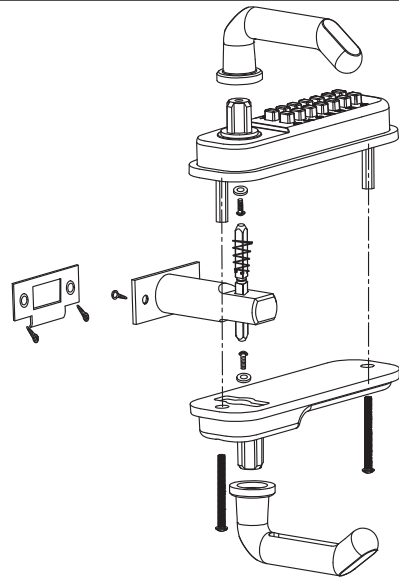


NOTES:
a. Do not press any buttons while changing the password.
b. The password can be set to 1-13 figures, but 5-6 figures should be the best combination.
c. Refer to example the password keys are 1267Y.

Handy Hint:
If your doorframe interferes with the lever it can be reversed by simply relocating the screw 'D' from hole 'E' to hole 'F'. Each and every time you wish to unlock your door you must start by pushing 'C'.



Fitting instruction



Any claim under this warranty must be made within 3 years of the date of purchase of the product. To make a claim under the warranty, take the product (with proof of purchase) to any Bunnings store (see www.bunnings.com.au for store locations). Bunnings Group Ltd bears reasonable, direct, expenses of claiming under the warranty. You may submit details and proof to our store for consideration.

The warranty covers manufacturer defects in materials, workmanship and finish under normal use.

This warranty is provided in addition to other rights and remedies you may have under law: our goods come with guarantees which cannot be excluded under the Australian Consumer Law. You are entitled to replacement or refund for a major failure and to compensation for other reasonably foreseeable loss or damage. You are also entitled to have the goods repaired or replaced if the goods fail to be of acceptable quality and the failure does not amount to a major failure.

The warranty excludes damage resulting from product misuse or product neglect. The warranty covers domestic use only and does not apply to commercial applications. This warranty is given by Bunnings Group Limited ABN 26 008 672 179, 16-18 Cato Street, Hawthorn East, Victoria 3123, e-mail: CustomerSupport@bunnings.com.au Or call our Customer Support Team – Ph.1800 797 586.

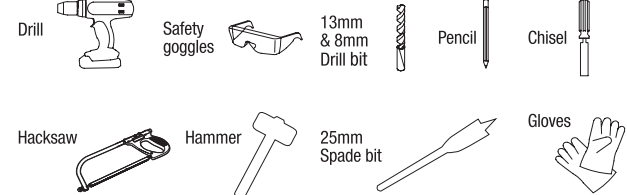
ikonic™ Digital Entry Lock

Please Note!
Please fasten all screws by hand and not an electric screwdriver or drill, as over tightening is not recommended. You will need untighten the screw in the large hole on the back of your digital lock to change the vertical handle to a horizontal left or right hand opening.

For your Safety:

When assembling or installing this product wear protective gloves and eyewear.

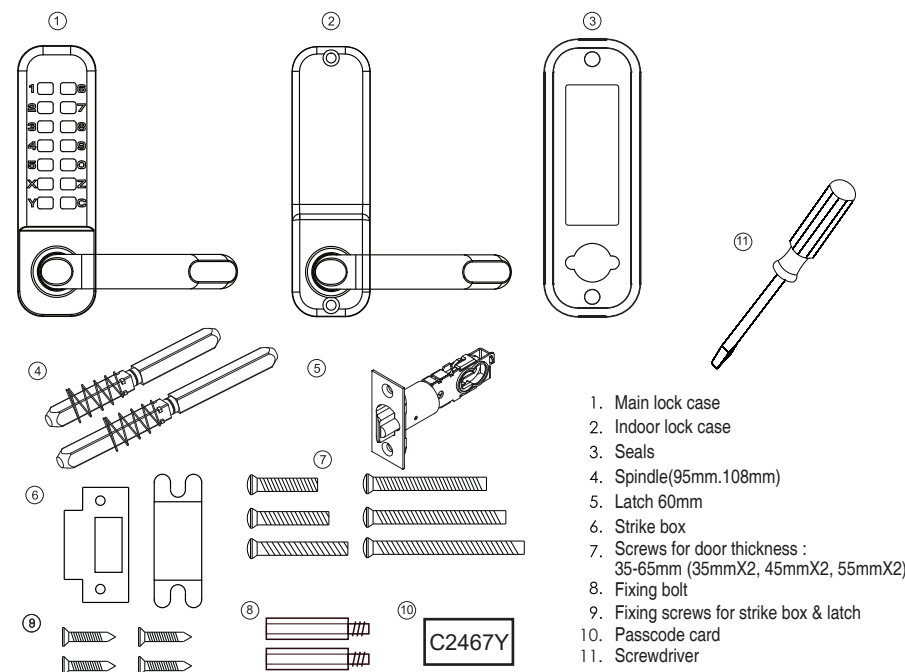
Installation tools required



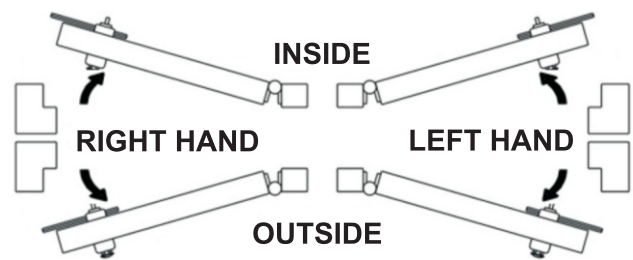
BEFORE INSTALLATION:

- 1) Ensure all parts work properly
- 2) Choose and set a code by following the 'Setting/Changing the code' instructions. All or part of the push buttons can be chosen in no particular order. Codes with 4 digits provide maximum security.
- 3) Ensure that both knob handles of the Digital Lock can be moved freely. Check that the Hold Back function can be engaged and keeps the latch retracted and handle pressed. Also check that the latch moves freely by pressing the end and by turning with the spindle.
- 4) Check that the door is suitable for this lock installation (ideal thickness: 35-65mm).

Box contents

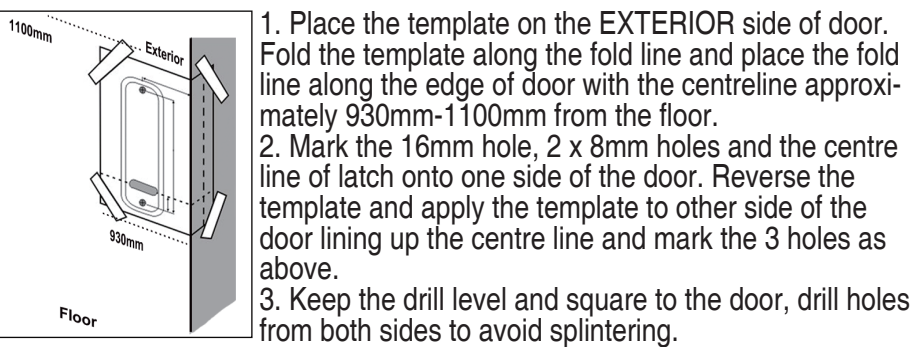


Door handing

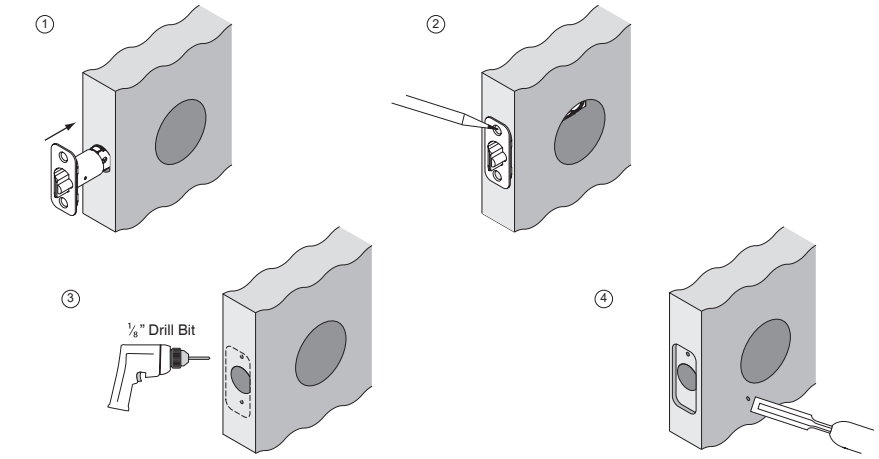
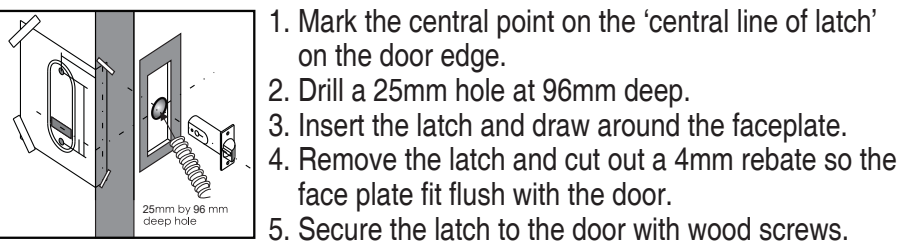


Viewed from outside, a door is right handed if the hinges are on the right, and left handed if the hinges are on the left.

Applying the template



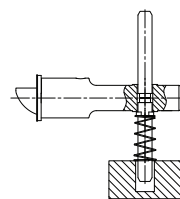
Positioning the latch



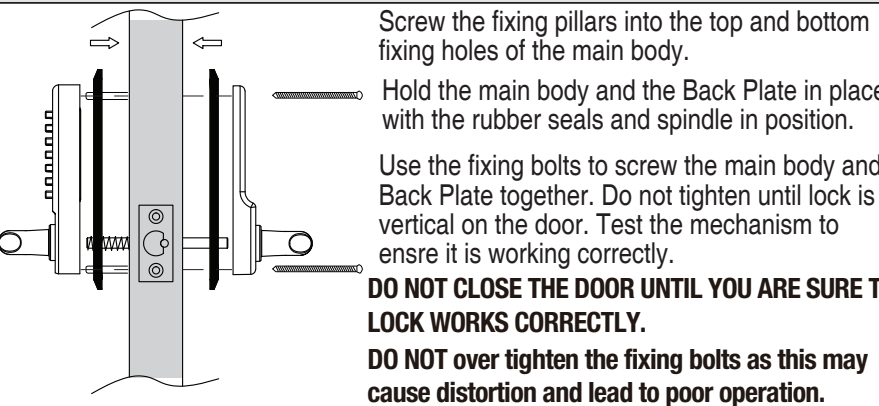
Spindle Installation

1. The spring loaded spindle will fit doors thickness, 95mm spindle for door thickness 35mm-50mm, 108mm spindle for door thickness 51mm-65mm.
2. With spring side of spindle face to the outdoor lock case.
3. Ensure the separation in the middle of spindle fully insert into the square hole of latch until the stopper of spring touch with latch bod.
4. Try to turn each side of the spindle and check the latch is work correctly.

REMARK: Do not turn the spindle during the backset is adjusting.



Fitting the lock



Fixing the strike box

