

# AEG

## **EX150ES**

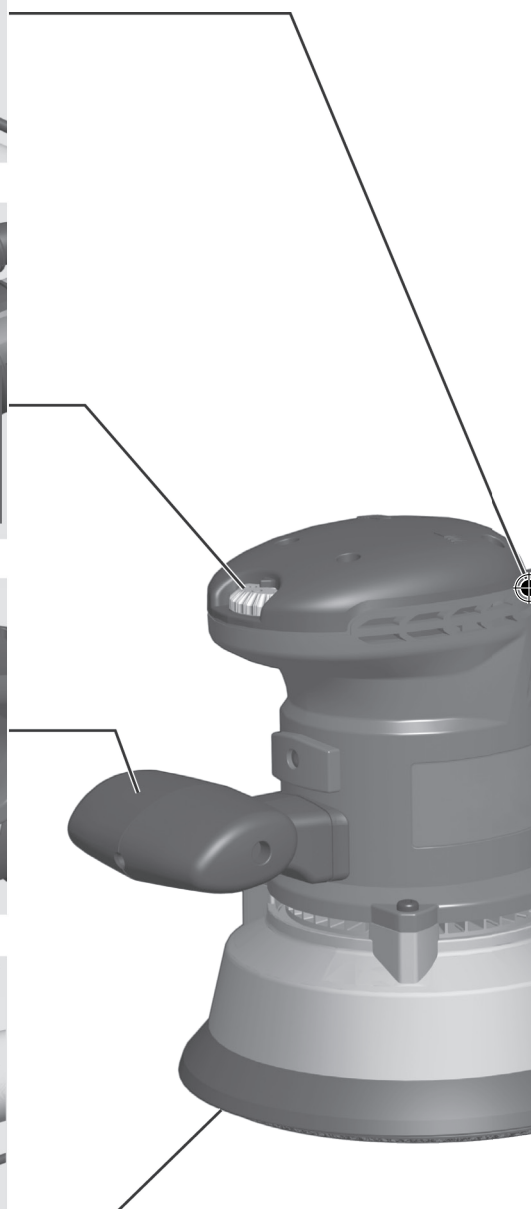
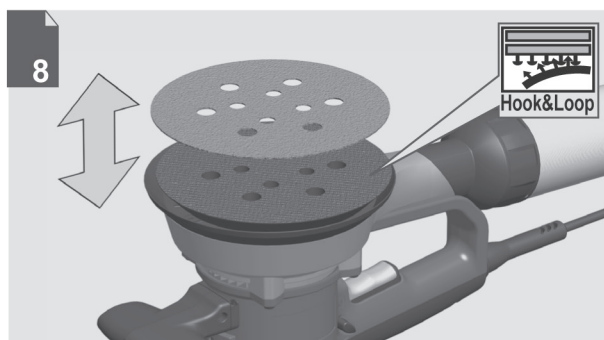
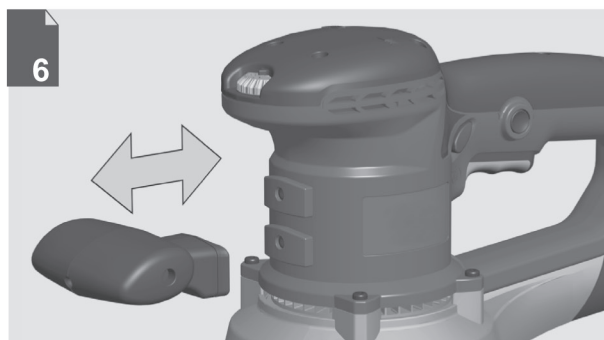
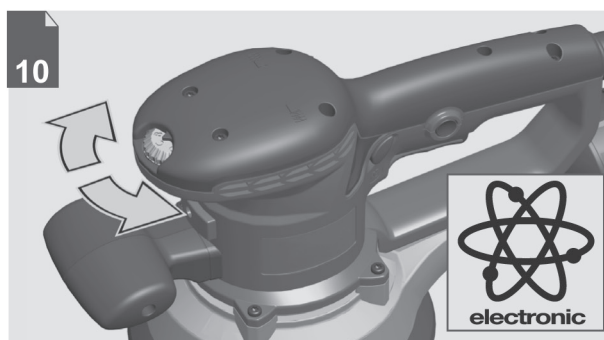
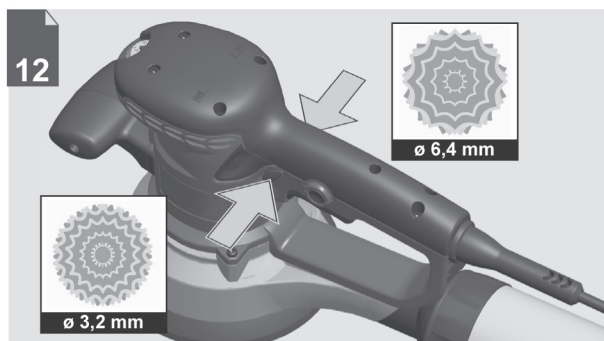
Original instructions

## Important!

It is essential that you read the instructions in this manual before assembling, operating and maintaining the product.

Subject to technical modifications.

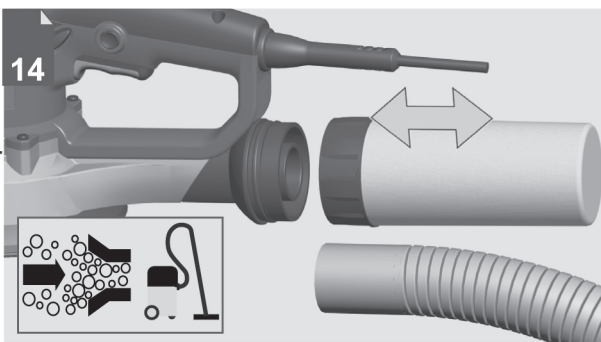




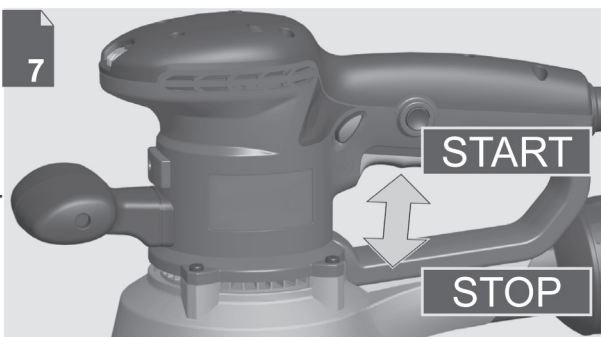
13

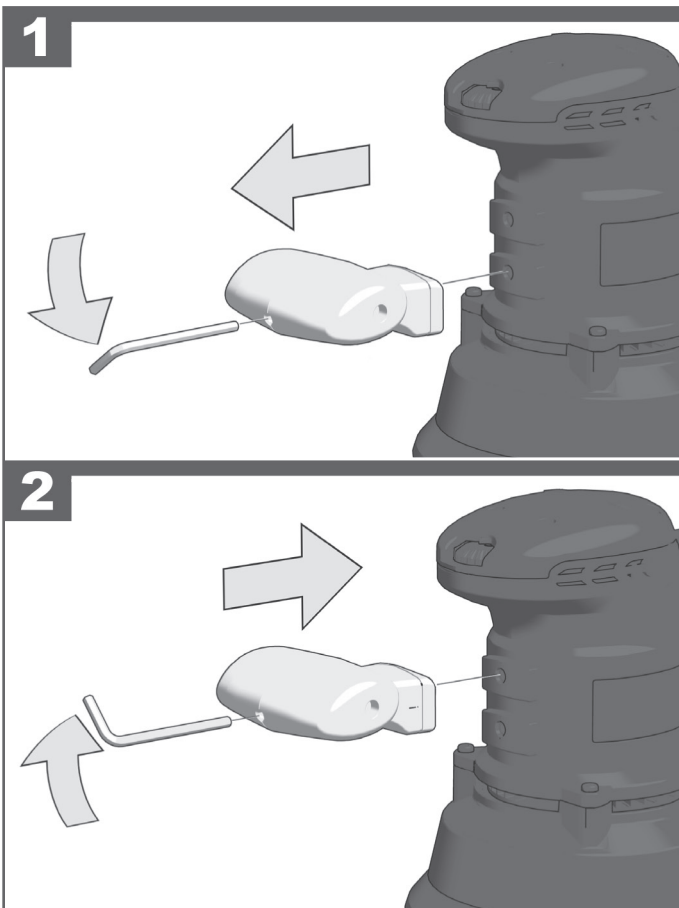
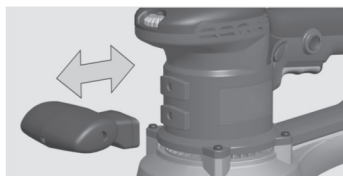


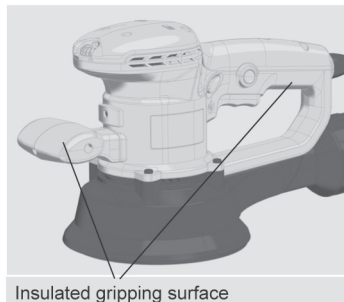
14



7

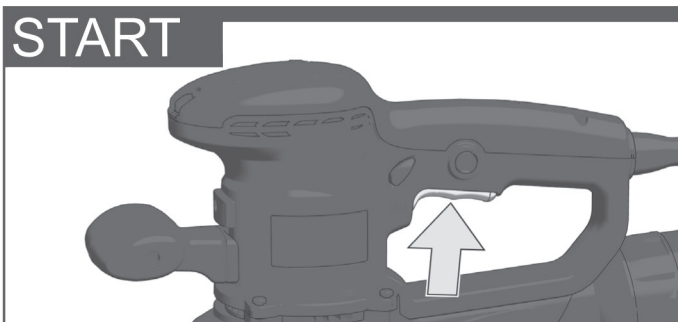




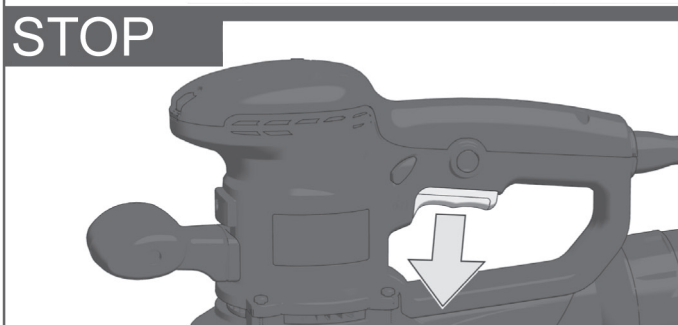


Insulated gripping surface

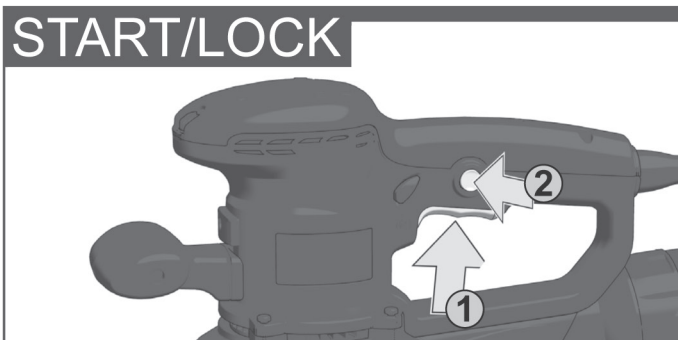
START



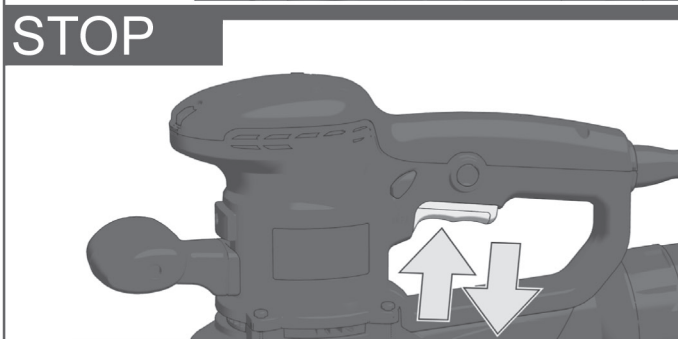
STOP

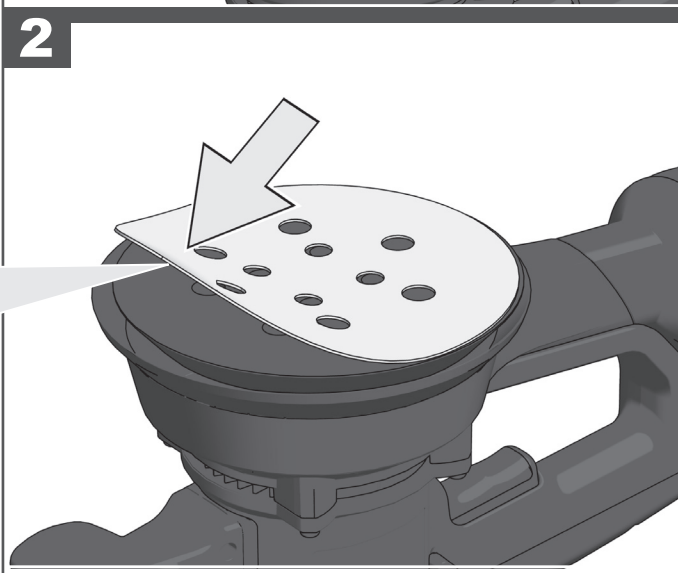
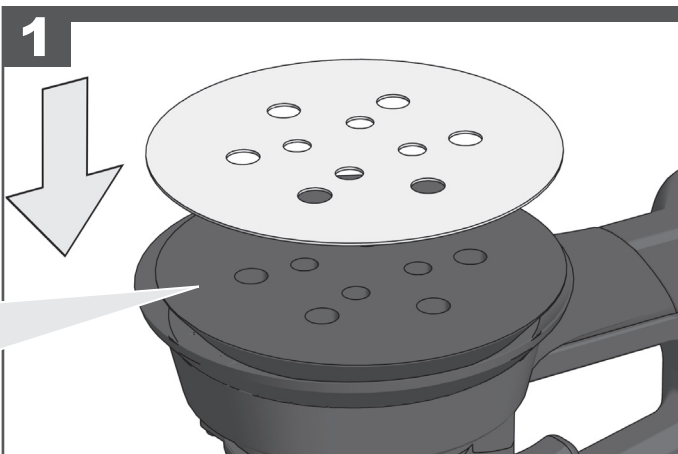
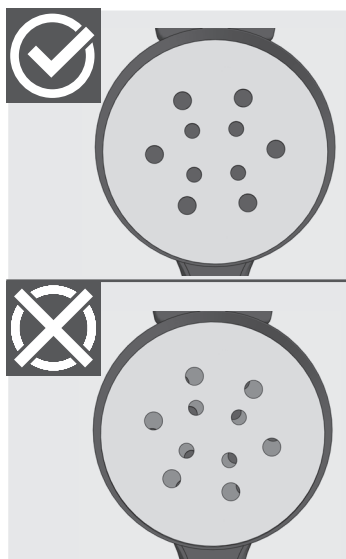
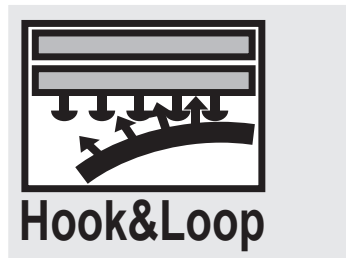
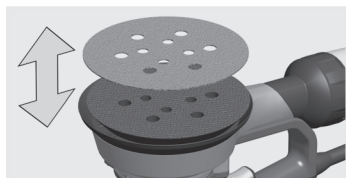


START/LOCK



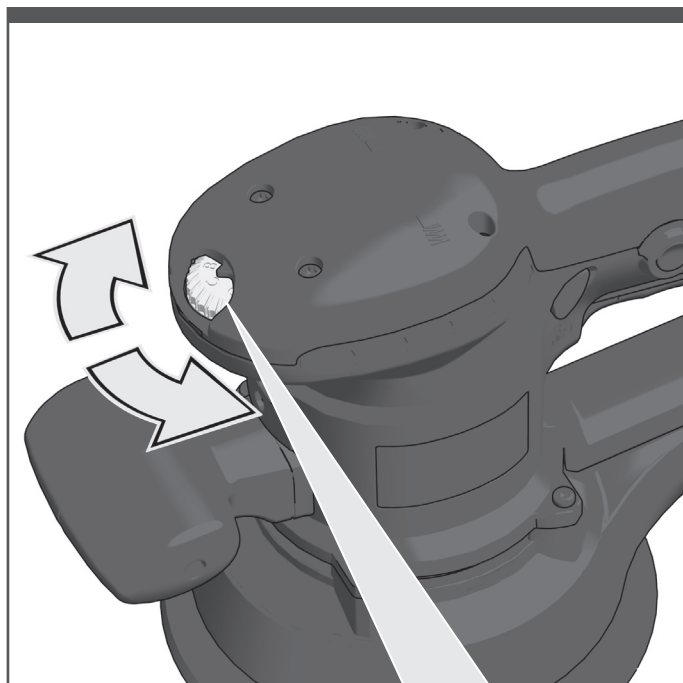
STOP







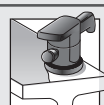
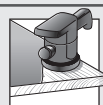
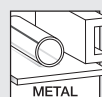
Press carefully the fuzzy side of sanding disc against the packaging pad, as firmly as possible.



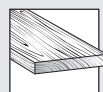
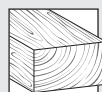
A...B

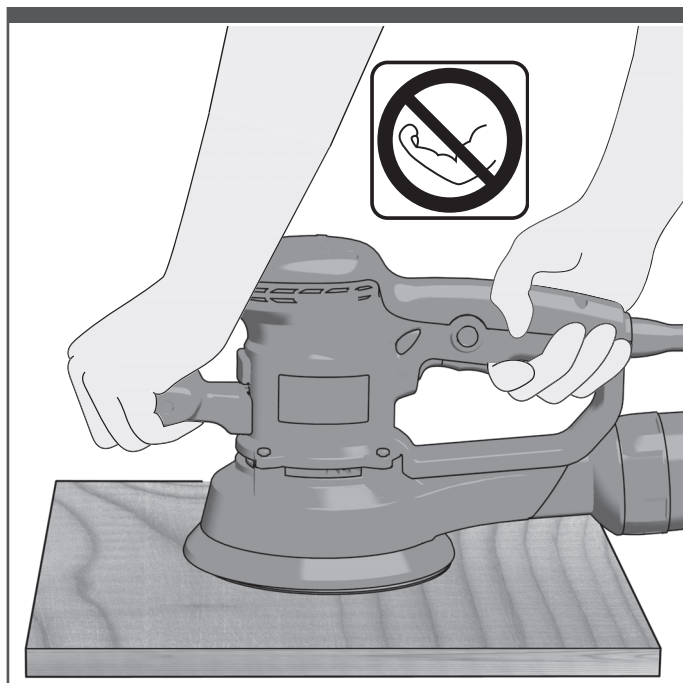


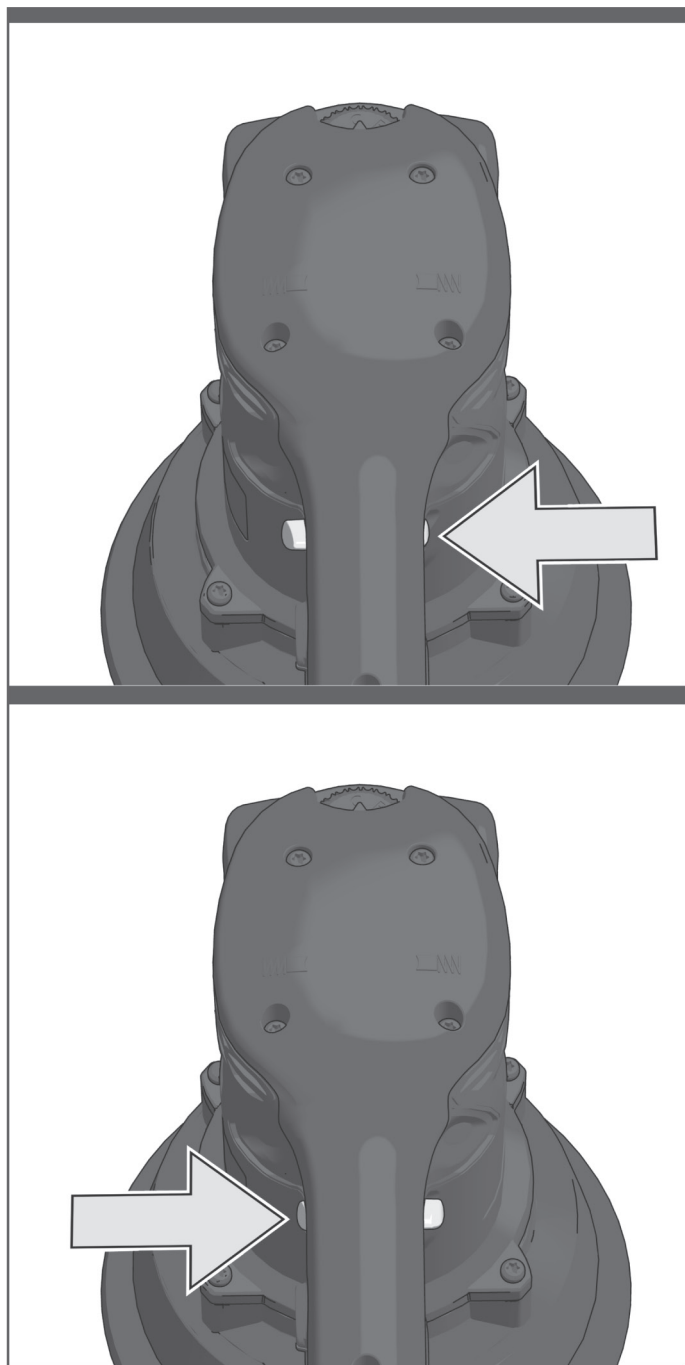
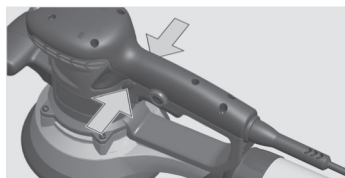
C...D



E...F

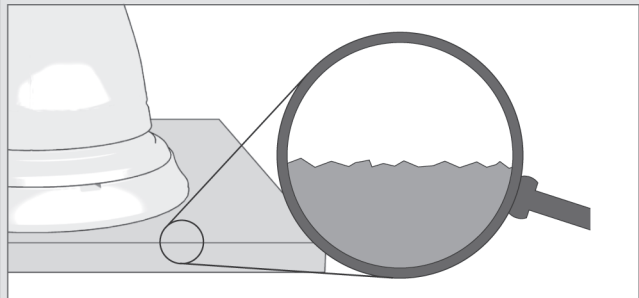
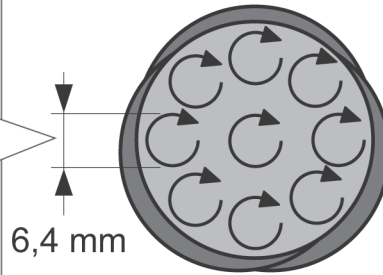




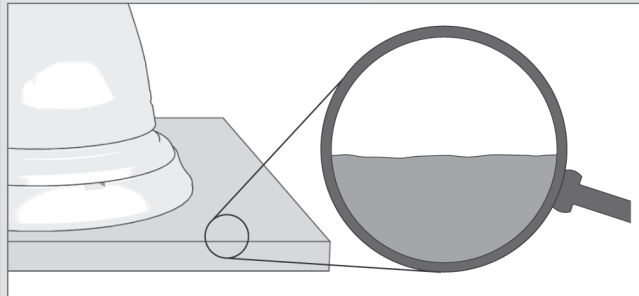
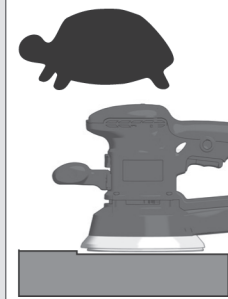
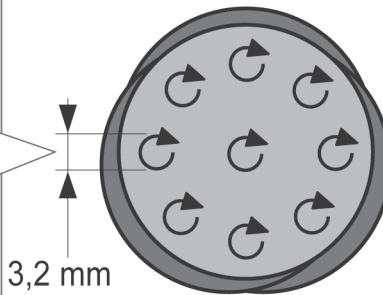


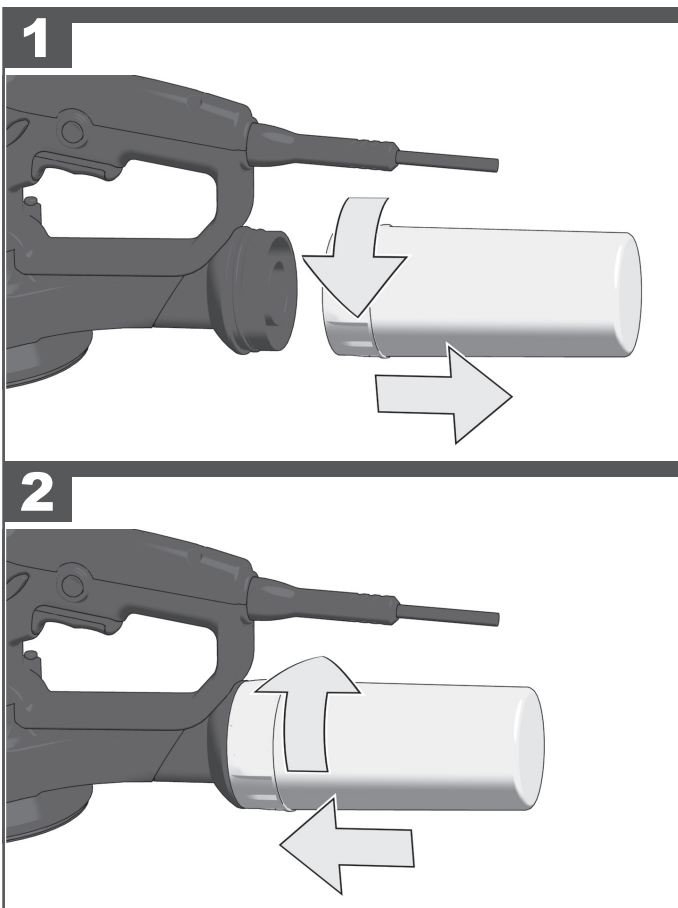
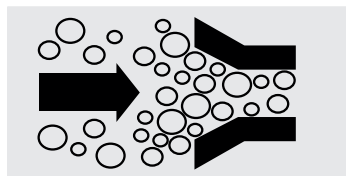


Orbital travel diameter

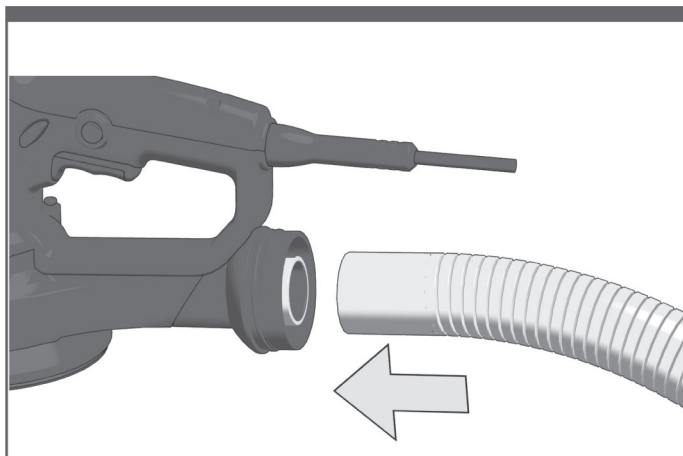


Orbital travel diameter





Accessory





TECHNICAL DATA	RANDOM ORBITAL SANDER	EX150ES
Rated input .....		440 W
Input voltage .....		220-240 V ~ 50 Hz
No-load speed .....		4000-10000 min <sup>-1</sup>
Orbital travel diameter .....		3.2/ 6.4 mm (1/8" / 1/4")
Dimensions of grinding plate .....		ø 150 mm
Weight according EPTA-Procedure 01/2014 .....		2.8 kg
Noise/ Vibration information		
Measured values determined according to EN 62841. Typically, the A-weighted noise levels of the tool are:		
Sound pressure level (Uncertainty K=3dB(A)) .....		86 dB(A)
Sound power level (Uncertainty K=3dB(A)) .....		97 dB (A)
Wear ear protectors!		
Total vibration values (vector sum in the three axes) determined according to EN 62841.		
Vibration emission value a <sub>h</sub> .....		8.5 m/s <sup>2</sup>
Uncertainty K= .....		1.5 m/s <sup>2</sup>

### ⚠ WARNING!

The vibration emission level given in this information sheet has been measured in accordance with a standardised test given in EN 62841 and may be used to compare one tool with another. It may be used for a preliminary assessment of exposure.

The declared vibration emission level represents the main applications of the tool. However if the tool is used for different applications, with different accessories or poorly maintained, the vibration emission may differ. This may significantly increase the exposure level over the total working period.

An estimation of the level of exposure to vibration should also take into account the times when the tool is switched off or when it is running but not actually doing the job. This may significantly reduce the exposure level over the total working period.

Identify additional safety measures to protect the operator from the effects of vibration such as: maintain the tool and the accessories, keep the hands warm, organisation of work patterns.

**⚠ WARNING! Read all safety warnings, instructions, illustrations and specifications provided with this power tool.** Failure to follow all instructions listed below may result in electric shock, fire and/or serious injury.

**Save all warnings and instructions for future reference.**

#### RANDOM ORBITAL SANDER SAFETY WARNINGS

**Hold the power tool by insulated gripping surfaces, because the sanding surface may contact its own cord.** Cutting a "live" wire may make exposed metal parts of the power tool "live" and could give the operator an electric shock.

**Wear ear protectors.** Exposure to noise can cause hearing loss.

**Use auxiliary handles supplied with the tool.** Loss of control can cause personal injury.

#### ADDITIONAL SAFETY AND WORKING INSTRUCTIONS

Appliances used at many different locations including open air should be connected via a residual current device of 30 mA or less.

Always wear goggles when using the product. It is recommended to wear gloves, sturdy non slipping shoes and apron.

Always disconnect the plug from the socket before carrying out any work on the product.

Only plug-in when product is switched off.

Keep mains lead clear from working range of the product. Always lead the cable away behind you.

Before use check product, cable, and plug for any damages or material fatigue. Repairs should only be carried out by authorised service

agents.

The dust produced when using the product may be harmful to health (e.g. when working oak or beech wood, stones, paint, which could contain lead or other harmful chemicals). Do not inhale the dust. Use a dust absorption system and wear a suitable dust protection mask. Remove deposited dust thoroughly, e.g. with a vacuum cleaner.

Do not use machines on any material containing asbestos.

The product is suitable only for dry sanding.

Dust from certain paints, coatings, and materials may cause irritation or allergic reactions.

Do not use compressed air to blow dust or debris. This practice is dangerous and can cause dirt and grit to be blasted into someone's eyes, causing serious injury.

#### RESIDUAL RISKS

Even when the product is used as prescribed, it is still impossible to completely eliminate certain residual risk factors. The following hazards may arise and the operator should pay special attention to avoid the following:

##### ■ Contact with the grinding plate

Additional caution must be exercised to prevent operator's fingers and hands from coming into contact with the grinding plate.

##### ■ Contact with or inhalation of dust

While using the product, considerable dust and fine particles will be produced. Use the dust collection device or connect a dust extraction vacuum during use. Wear respiratory protection masks containing filters appropriate to the materials being worked.





Ensure adequate workplace ventilation. Do not eat, drink, or smoke in the work area.

■ Risk of explosion

Accumulated fine dust may ignite and cause fire. Keep the work area clean and free from dust. Dust collection and vacuum extraction systems should be regularly and thoroughly cleaned. When sanding metal, hot sparks may be produced.

■ Noise and Vibration

Wear ear protection when operating the product. Do not operate the product for extended periods of time.

See "Risk reduction".

## RISK REDUCTION

It has been reported that vibrations from handheld tools may contribute to a condition called Raynaud's Syndrome in certain individuals. Symptoms may include tingling, numbness and blanching of the fingers, usually apparent upon exposure to cold. Hereditary factors, exposure to cold and dampness, diet, smoking and work practices are all thought to contribute to the development of these symptoms. There are measures that can be taken by the operator to possibly reduce the effects of vibration:

- Keep your body warm in cold weather. When operating the unit wear gloves to keep the hands and wrists warm. It is reported that cold weather is a major factor contributing to Raynaud's Syndrome.
- After each period of operation, exercise to increase blood circulation.
- Take frequent work breaks. Limit the amount of exposure per day.

If you experience any of the symptoms of this condition, immediately discontinue use and see your doctor about these symptoms.

**⚠ WARNING!** Injuries may be caused, or aggravated, by prolonged use of a tool. When using any tool for prolonged periods, ensure you take regular breaks.

## SPECIFIED CONDITIONS OF USE

This random orbital sander is a versatile machine. The following work can be carried out with it: coarse sanding and grinding, fine sanding and polishing, rubbing down weather-beaten paint, polishing up scratches on acrylic glass, etc.

To provide the best adhesion, it is recommended that you clean the backing pad and the sanding disc backing occasionally by brushing them lightly with a small brush.

Do not use the product in any other way as stated for normal use.

## MAINS CONNECTION

Connect only to single-phase AC current and only to the system voltage indicated on the rating plate. It is also possible to connect to sockets without an earthing contact as the design conforms to safety class II.

## ADVICE FOR OPERATION

Only use original AEG sanding and polishing tools with self-adhesive fastening.

## MAINTENANCE

If the power supply cord is damaged, it must be replaced only by the manufacturer or by an authorised service centre to avoid a safety

hazard. Contact authorised service centre.

The ventilation slots of the machine must be kept clear at all times.

Use only AEG accessories and spare parts. Should components need to be replaced which have not been described, please contact one of our AEG service agents (see our list of guarantee/service addresses). If needed, an exploded view of the tool can be ordered. Please state the Article No. as well as the machine type printed on the label and order the drawing at your local service agents or directly at:

### Techtronic Industries (Australia) Pty. Ltd.

PO Box 1065  
Mount Waverley VIC 3149  
Tel. no. 1300 234 797  
Australia

### Techtronic Industries N.Z. Ltd.

PO Box 12-806  
Penrose AUCKLAND 1642  
Tel. no. 0800 234 797  
New Zealand

## SYMBOLS



**CAUTION! WARNING! DANGER!**



Always disconnect the plug from the socket before carrying out any work on the product.



Please read the instructions carefully before starting the product.



Do not dispose of electric tools together with household waste material.

Electric tools and electronic equipment that have reached the end of their life must be collected separately and returned to an environmentally compatible recycling facility. Check with your local authority or retailer for recycling advice and collection point.



Class II tool, tool in which protection against electric shock does not rely on basic insulation only, but in which additional safety precautions, such as double insulation or reinforced insulation, are provided.

There being no provision for protective earthing or reliance upon installation conditions.

**n<sub>0</sub>**

No-load speed

**V**

Volts



AC Current





Regulatory Compliance Mark (RCM). Product meets applicable regulatory requirements.







# AEG



[www.aegpowertools.com.au](http://www.aegpowertools.com.au)  
[www.aegpowertools.co.nz](http://www.aegpowertools.co.nz)

**Techtronic Industries Australia Pty Ltd**  
31 Gilby Road, Mount Waverley, VIC 3149  
Australia

**Techtronic Industries N.Z. Limited**  
2 Landing Drive, Mangere  
Auckland, 2022, New Zealand

961096475-01A

*AEG is a registered trademark used under  
license from AB Electrolux (publ).*

