

RYOBI®

RLT1833BL4
OLT1833BL

ORIGINAL INSTRUCTIONS

Cordless Line Trimmer



Important!

It is essential that you read the instructions in this manual before assembling, operating, and maintaining the product.

Subject to technical modification.

Safety, performance, and dependability have been given top priority in the design of your cordless line trimmer.

INTENDED USE

The cordless line trimmer is intended to be used only by adults who have read and understood the instructions and warnings in this manual and can be considered responsible for their actions.

The product is intended only for outdoor use in a well-ventilated area. For safety reasons, the product must be adequately controlled by a two-handed operation.

When fitted with the line trimmer head (and appropriate guard), the product is intended for cutting long grass, pulpy weed, and similar vegetation at or about ground level. The cutting plane should be approximately parallel to the ground surface when trimming.

The product should not be used to cut or trim hedges, bushes, or other vegetation where the cutting plane is not parallel to the ground surface.

Do not use the product for any other purpose.

GENERAL SAFETY WARNINGS

WARNING

Read all safety warnings and all instructions. Failure to follow the warnings and instructions may result in electric shock, fire, and/or serious injury.

WARNING

When using the product, the safety rules must be followed. For your own safety and that of bystanders, please read these instructions before operating the product. Please keep the instructions safe for later use.

WARNING

The product is not intended to be used by children or persons with reduced physical, mental, or sensory capabilities. Children should be adequately supervised to ensure that they do not play with the product.

WARNING

Some regions have regulations that restrict the use of the product. Check with your local authority for advice.

TRAINING

- Read the instructions carefully. Be familiar with all controls and the proper use of the product.
- Never allow children or people who are unfamiliar with these instructions to use the product. Local regulations may restrict the age of the operator.
- Keep bystanders, children, and pets 15 m away from the area of operation. Stop the product if anyone enters the area.
- Never use the product while tired, ill, or under the influence of alcohol, drugs, or medication.

- Keep in mind that the operator or user is responsible for accidents or hazards occurring to other people or their property.

PREPARATION

- Wear full eye and hearing protection while operating the product. If working in an area where there is a risk of falling objects, head protection must be worn.
- Hearing protection may restrict the operator's ability to hear warning sounds. Pay particular attention to potential hazards around and inside the working area.
- Wear heavy, long trousers, boots, and gloves. Do not wear loose-fitting clothing, short trousers, or jewellery of any kind, and do not use the product with bare feet.
- Secure long hair so that it is above shoulder level to prevent entanglement in moving parts.
- Before use and after any impact, check that there are no damaged parts on the product. A defective switch or any part that is damaged or worn should be properly repaired or replaced by an authorised service centre.
- Make sure that the cutting attachment is properly installed and securely fastened.
- Never operate the product unless all guards, deflectors, and handles are properly and securely attached.
- Consider the environment in which you are working. Keep the working area free from wires, sticks, stones, and debris, which if struck by the cutter can become thrown objects.

BATTERY TOOL USE AND CARE

- Recharge only with the charger specified by the manufacturer. A charger that is suitable for one type of battery pack may create a risk of fire when used with another battery pack.
- Use power tools only with specifically designated battery packs. Use of any other battery packs may create a risk of injury and fire.
- When the battery pack is not in use, keep it away from other metal objects, like paper clips, coins, keys, nails, screws, or other small metal objects that can make a connection from one terminal to another. Shorting the battery terminals together may cause burns or a fire.
- Under abusive conditions, liquid may be ejected from the battery. Avoid contact. If contact accidentally occurs, flush with water. If liquid contacts eyes, additionally seek medical help. Liquid ejected from the battery may cause irritation or burns.

LINE TRIMMER SAFETY WARNINGS

- Never allow children, persons with reduced physical, sensory, or mental capabilities or lack of experience and knowledge, or people who are unfamiliar with these instructions to use the product.
- Use the product in daylight or with good artificial light.
- Avoid using the product on wet grass.
- Keep proper footing and balance at all times, and be sure of proper footing on slopes.
- Do not walk backwards when using the product. Walk, never run.

- Keep the head attachment below waist level.
- Never use the product with damaged guards or without guards in place.
- Do not fit a metal replacement line.
- Keep hands and feet away from the cutting means at all times, especially when turning on the motor.
- Beware, the cutting means continue to rotate after the motor is turned off.
- Beware of objects thrown by the cutting means. Clear debris like small stones, gravel, and other foreign objects from the work area before starting operation. Wires or string may become entangled with the cutting means.
- To reduce the risk of injury associated with contacting moving parts, always turn off the product, remove the battery pack, and allow both to cool down. Make sure that all moving parts have come to a complete stop:
 - before servicing
 - before clearing a blockage
 - before checking, cleaning, and working on the product
 - before changing accessories
 - after striking a foreign object
 - whenever leaving the product unattended
 - whenever performing maintenance
 - whenever the product starts to vibrate abnormally
- Wear full eye and hearing protection while operating the product. If working in an area where there is a risk of falling objects, head protection must be worn.
- Hearing protection may restrict the operator's ability to hear warning sounds. Pay particular attention to potential hazards around and inside the working area.
- Wear heavy, long trousers, boots, and gloves. Do not wear loose-fitting clothing, short trousers, or jewellery of any kind, and do not use the product with bare feet.
- Secure long hair so that it is above shoulder level to prevent entanglement in moving parts.
- The small blade fitted to the lawn guard is designed to trim the new extended line to the correct length for safe and optimum performance. The blade is very sharp. Do not touch the blade, particularly when cleaning the product.
- Always ensure that ventilation openings are kept clear of debris.
- Before use and after any impact, check that there are no damaged parts on the product. A defective switch or any part that is damaged or worn should be properly repaired or replaced by an authorised service centre.
- Make sure that the cutting head attachment is properly installed and securely fastened.
- Make sure that all guards, deflectors, and handles are properly and securely attached.
- Do not modify the product in any way. This may increase the risk of injury to yourself or others.
- Use only the manufacturer's replacement cutting line. Do not use any other cutting attachment.
- Immediately turn off the product and remove the battery pack in the event of accident or breakdown. Do not

operate the product again until it has been fully checked by an authorised service centre.

⚠ WARNING

Ensure that the line cut-off blade in the guard is properly positioned and secured before each use.

ADDITIONAL BATTERY SAFETY WARNINGS

⚠ WARNING

To reduce the risk of fire, personal injury, and product damage due to a short circuit, never immerse the tool, battery pack, or charger in fluid or allow fluid to flow inside them. Corrosive or conductive fluids, such as seawater, certain industrial chemicals, and bleach or bleach-containing products, etc., can cause a short circuit.

TRANSPORTATION AND STORAGE

- Turn off the product, remove the battery pack, and allow both to cool down before storing or transporting.
- Remove all foreign materials from the product.
- Do not store or transport the product with the battery pack fitted. Remove the battery pack, and secure it separately. Store the product in a cool, dry, and well-ventilated place that is inaccessible to children. Keep the product away from corrosive agents, such as garden chemicals and de-icing salts. Do not store the product outdoors.
- For transportation in vehicles, secure the product against movement or falling to prevent injury to persons or damage to the product.

TRANSPORTING LITHIUM BATTERIES

Transport the battery pack in accordance with local and national provisions and regulations. Follow all special requirements on packaging and labelling when transporting batteries by a third party.

Ensure that no batteries can come in contact with other batteries or conductive materials while in transport by protecting exposed connectors with insulating, non-conductive caps or tape. Do not transport batteries that are cracked or leaking. Check with the forwarding company for further advice.

MAINTENANCE

⚠ WARNING

Use only original manufacturer's replacement parts, accessories, and attachments. Failure to do so can cause possible injury, can contribute to poor performance, and may void your warranty.

WARNING

Servicing requires extreme care and knowledge and should be performed only by a qualified service technician. Have the product serviced by an authorised service center only. When servicing, use only original replacement parts.

- Turn off the product and remove the battery pack before conducting any maintenance or cleaning work.
- You may only make adjustments and repairs described in this manual. For other repairs, contact an authorised service centre.
- For the replacement line, use only a nylon filament line of the diameter described in the specifications table of this manual.
- After extending the new cutter line, always return the product to its normal operating position before starting.
- After each use, clean the product with a soft, dry cloth. Any part that is damaged should be properly repaired or replaced by an authorised service centre.
- Check all nuts, bolts, and screws before each use and at frequent intervals for proper tightness to ensure that the product is in safe working condition. Any part that is damaged should be properly repaired or replaced by an authorised service centre.
- Bring the product to an authorised service centre to replace damaged or unreadable labels.

RESIDUAL RISKS

Even when the product is used as prescribed, it is still impossible to completely eliminate certain residual risk factors. The following hazards may arise during use, and the operator should pay special attention to avoid the following:

- injury caused by vibration
 - Hold the product by the designated handles, and restrict working time and exposure.
- injury caused by exposure to noise
 - Wear hearing protection, and limit exposure.
- injury caused by flying debris
 - Wear eye protection at all times.

RISK REDUCTION

It has been reported that vibrations from handheld tools may contribute to a condition called Raynaud's Syndrome. Symptoms may include tingling, numbness, and blanching of the fingers, usually apparent upon exposure to cold. Hereditary factors, exposure to cold and dampness, diet, smoking, and work practices are all thought to contribute to the development of these symptoms. There are measures that can be taken by the operator to possibly reduce the effects of vibration:

- Keep your body warm in cold weather. When operating the product, wear gloves to keep the hands and wrists warm. It is reported that cold weather is a major factor contributing to Raynaud's Syndrome.

- After each period of operation, exercise to increase blood circulation.
- Take frequent work breaks. Limit the amount of exposure per day.

If you experience any of the symptoms of this condition, immediately discontinue use and see your physician.

WARNING

Injuries may be caused, or aggravated, by prolonged use of a tool. When using any tool for prolonged periods, ensure that you take regular breaks.

WHAT'S IN THE BOX

See pages 5–6.

- Lower boom with string head assembly × 1
- Powerhead with upper boom assembly × 1
- Front handle × 1
- Charger (RLT1833BL4 only) × 1
- Battery (RLT1833BL4 only) × 1
- Operator's manual × 1
- Allen wrench × 1
- Speed winder × 1
- Screw × 2

NOTE: For OLT1833BL, the battery and charger are sold separately.

SYMBOLS ON THE PRODUCT



Read and understand all instructions before operating the product. Follow all warnings and safety instructions.



Wear eye protection.



Wear ear protection.



Wear non-slip safety footwear when using the product.



Do not use metal blades on the product.



Do not expose the product to rain or damp condition.



Remove the battery pack before starting any work on the product.



Beware of thrown or flying objects. Keep all bystanders, especially children and pets, at least 15 m away from the operating area.



Guaranteed sound power level



Keep hands away from the cut-off blade.



Insert shaft fully to this line.



Regulatory Compliance Mark (RCM).
Product meets applicable regulatory requirements.



Waste electrical products should not be disposed of with household waste. Please recycle where facilities exist. Check with your local authority or retailer for recycling advice.

The following signal words and meanings are intended to explain the levels of risk associated with the product:



DANGER

Indicates an imminently hazardous situation, which, if not avoided, will result in death or serious injury.



WARNING

Indicates a potentially hazardous situation, which, if not avoided, could result in death or serious injury.



CAUTION

Indicates a potentially hazardous situation, which, if not avoided, may result in minor or moderate injury.

CAUTION

(Without Safety Alert Symbol)
Indicates a situation that may result in property damage.

SYMBOLS IN THIS MANUAL



Parts or accessories sold separately



Note

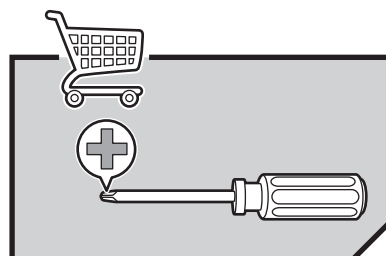
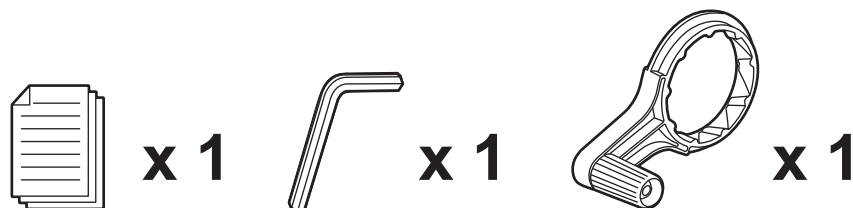
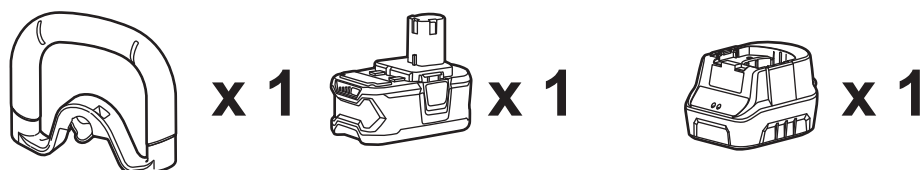
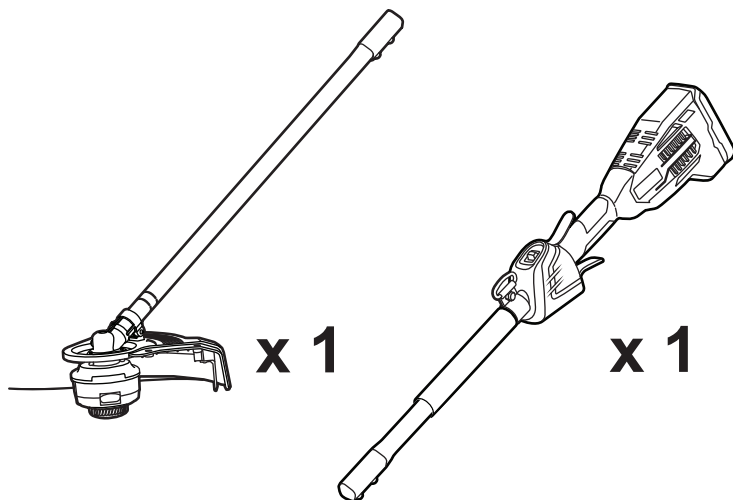


Warning

WHAT'S IN THE BOX

RLT1833BL4

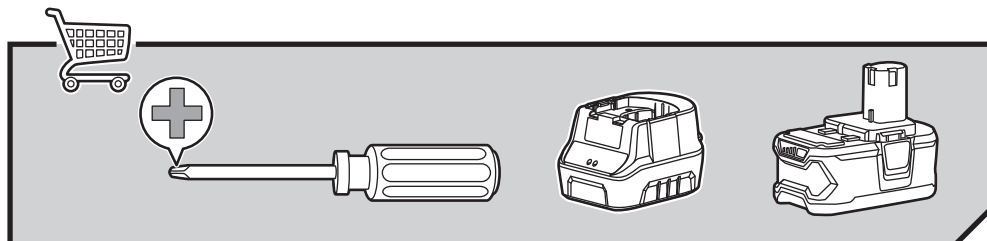
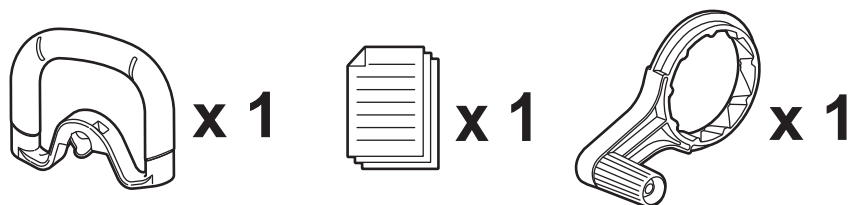
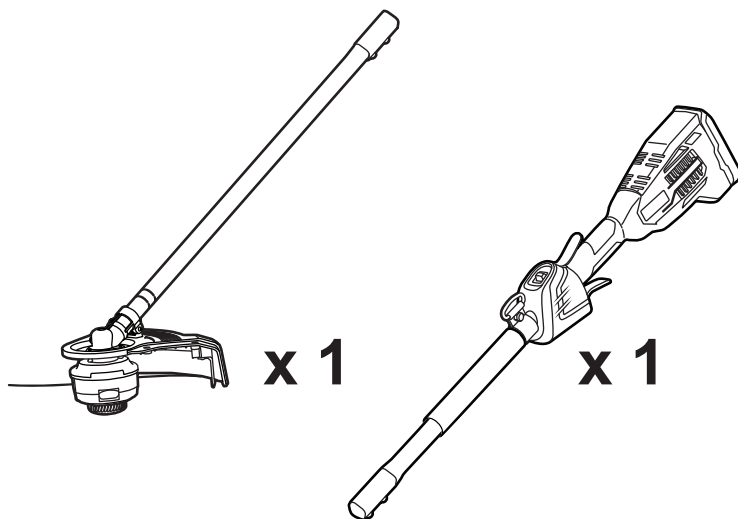
* Kit includes battery and charger.



WHAT'S IN THE BOX

OLT1833BL

* Battery and charger are sold separately.

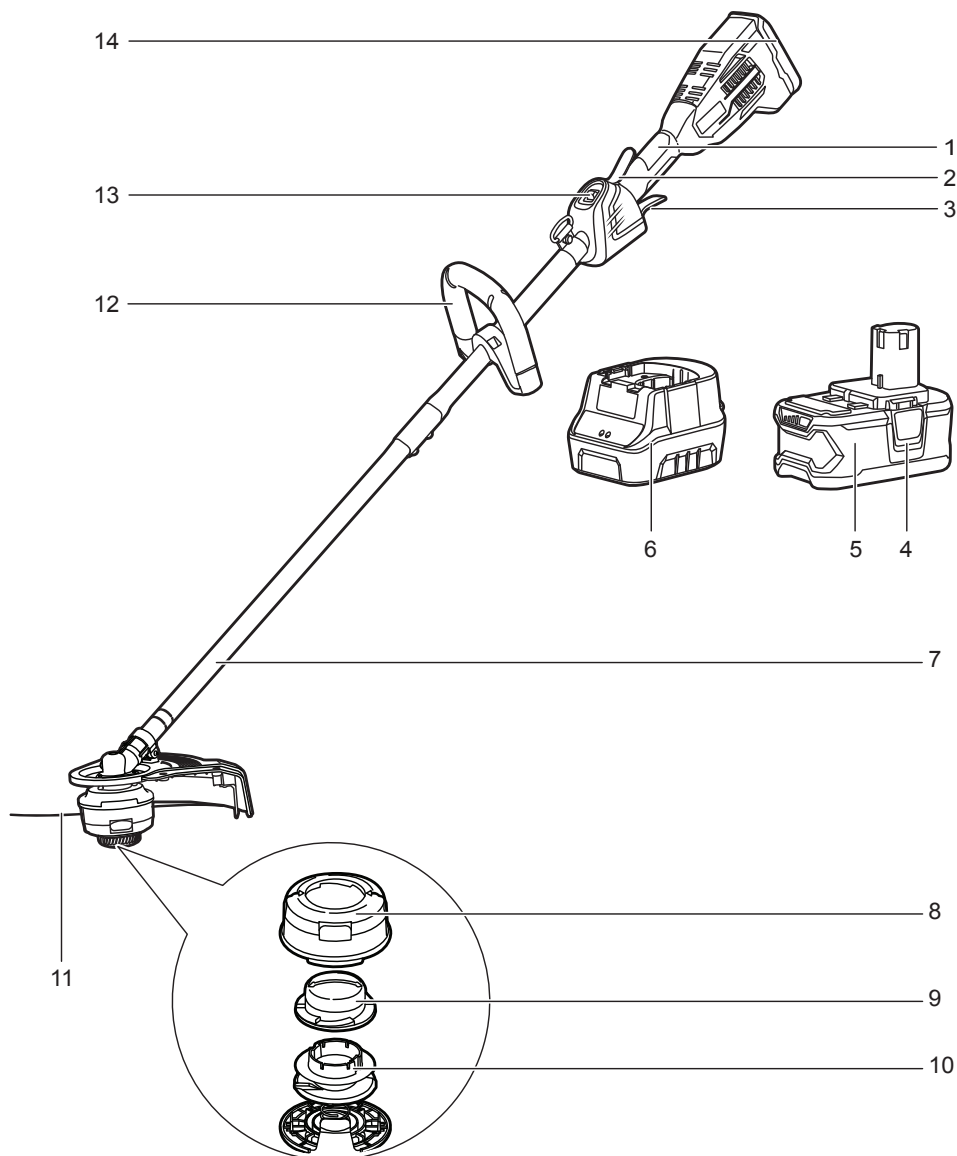


KNOW YOUR PRODUCT

1. Rear handle
2. Lock-out trigger
3. Variable speed trigger
4. Battery latch button
5. Battery pack
6. Charger

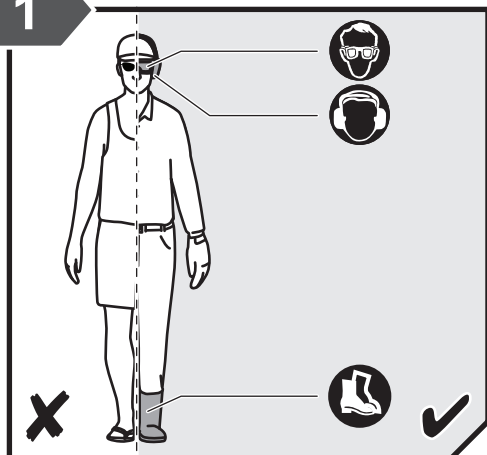
7. Lower shaft
8. Outer spool
9. Bump knob
10. Inner spool
11. Cutting line
12. Front handle

13. Speed selector
14. Battery port



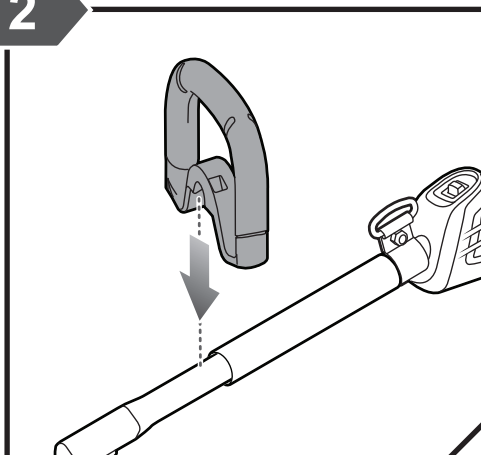
GETTING STARTED

1



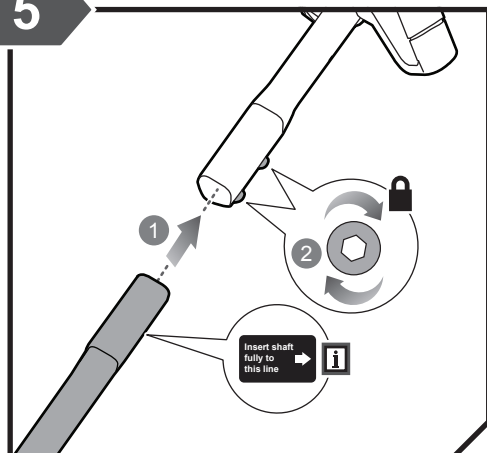
Always wear safety goggles or safety glasses with side shields when operating the product. Wear non-slip, heavy-duty protective gloves. Wear non-skid, protective footwear that will protect your feet and improve your footing on slippery surfaces.

2



Install the front handle onto the upper shaft.

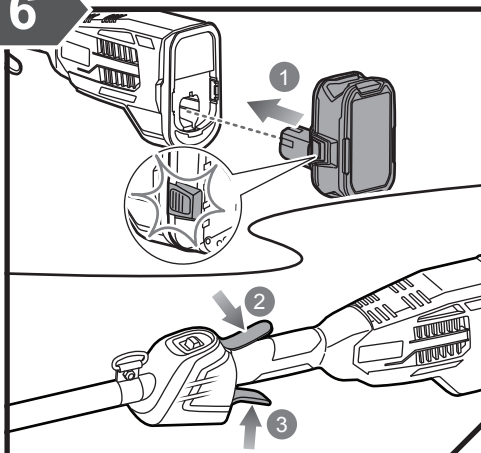
5



Insert and tighten the lower shaft to the upper shaft.

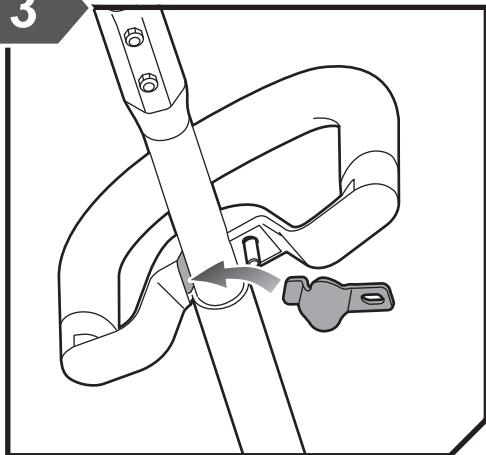
NOTE: Insert the lower shaft up to the indicator line.

6



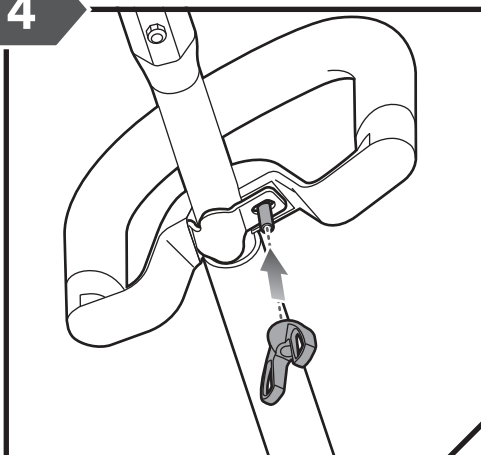
Insert the battery pack until the battery latch button clicks into place. Push the lock-out trigger and squeeze the variable speed trigger to operate the product.

3



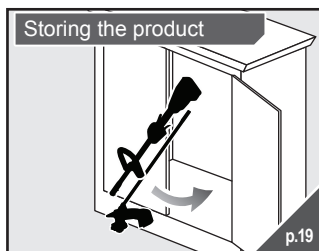
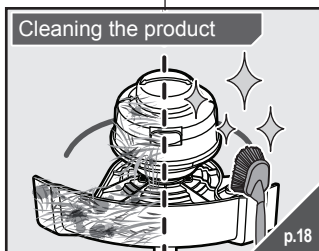
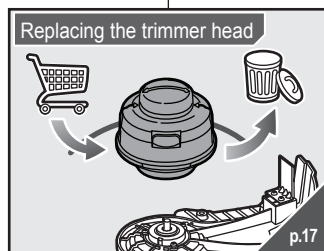
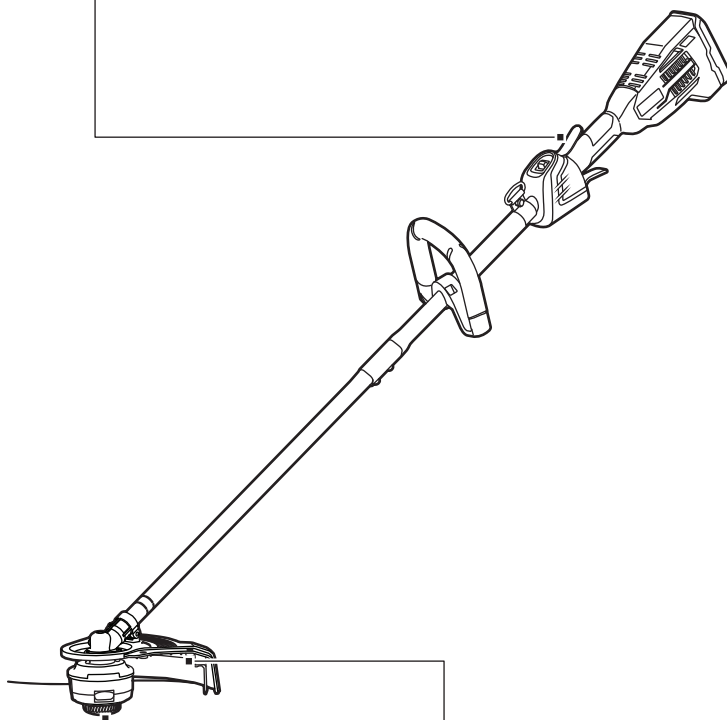
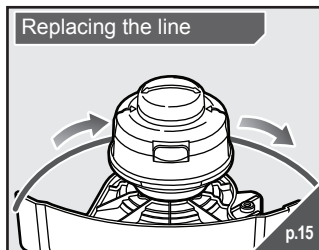
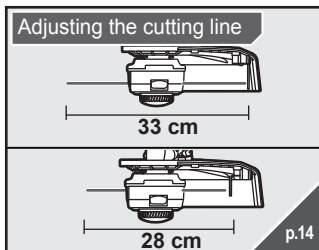
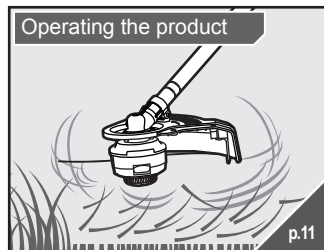
Insert the tab into the slot.

4

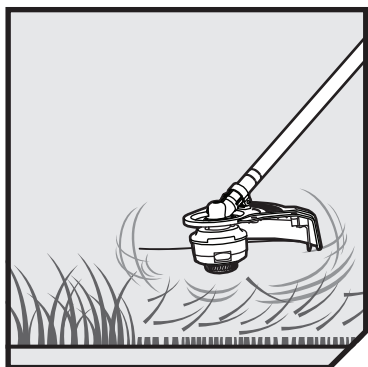


Insert the wing nut into the tab to secure the handle.

OVERVIEW



OPERATION



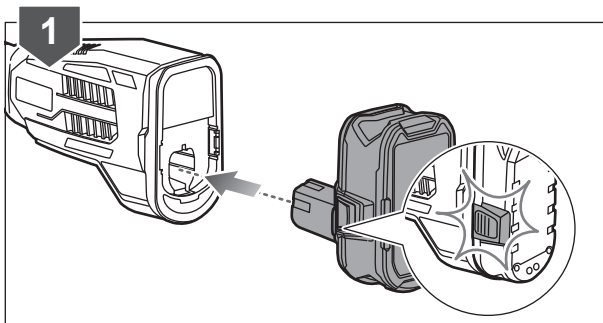
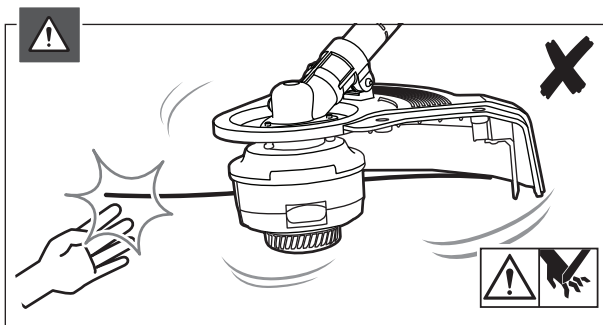
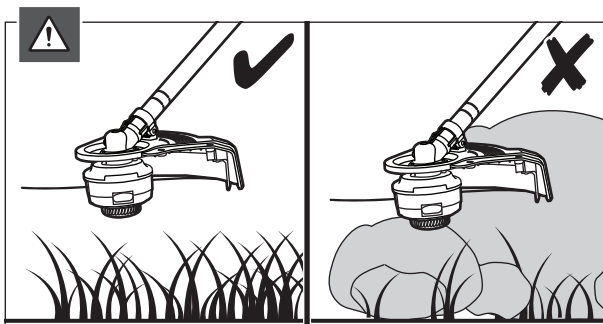
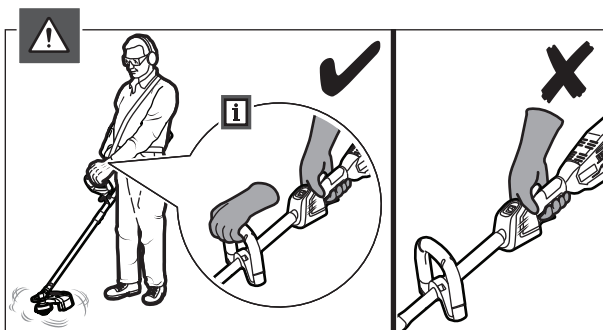
OPERATING THE PRODUCT

WARNING: For safety reasons, the product must be adequately controlled by a two-handed operation. Hold the product with the right hand on the rear handle and the left hand on the front handle.

WARNING: Consider the environment in which you are working. Keep the working area free from wires, sticks, stones, and debris, which if struck by the cutter can become thrown objects.

WARNING: Exercise extreme caution when using the product. Keep hands and feet away from the cutting means at all times, especially when turning on the motor.

1. Insert the battery pack until the battery latch button clicks into place.



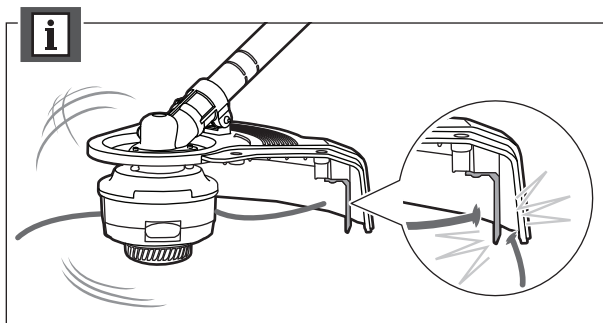
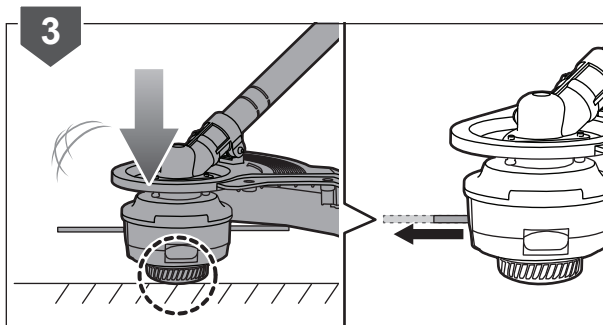
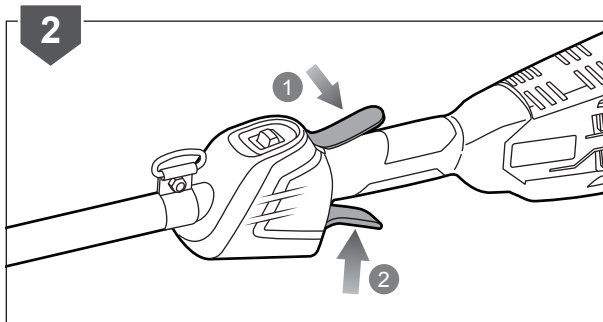
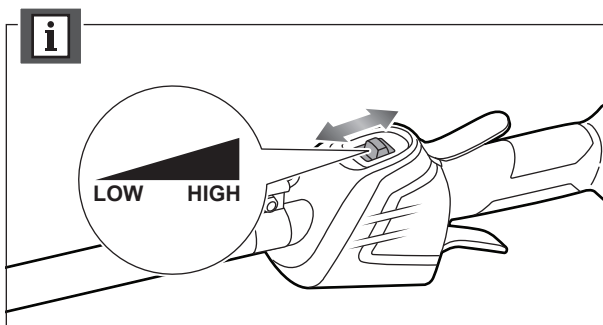
OPERATION

NOTE: Use the speed selector to adjust the speed from high to low.

2. Push the lock-out trigger and squeeze the variable speed trigger to operate the product.
3. Tap the bump knob on the ground to advance the line. The line advances each time that the head is tapped. Do not hold the bump knob onto the ground.

NOTE: Tap the bump knob only on grass to prevent damage to the bump knob.

NOTE: The small blade fitted to the cutting attachment guard is designed to trim the newly extended line to the correct length for safe and optimum performance. The blade is very sharp. Do not touch the blade, particularly when cleaning the product.

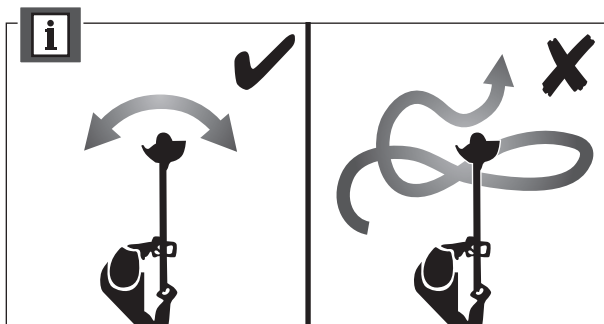
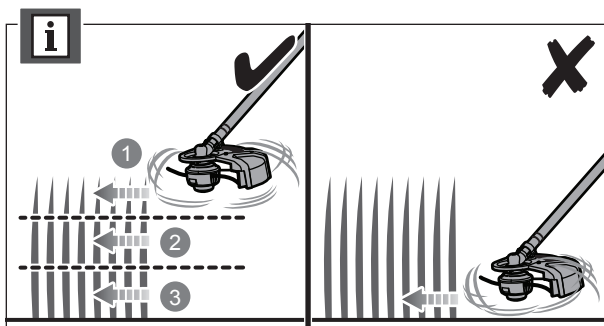
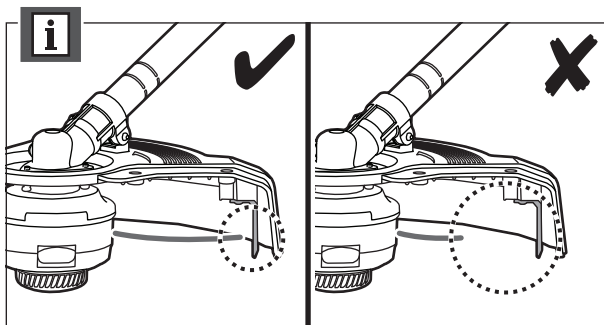


OPERATION

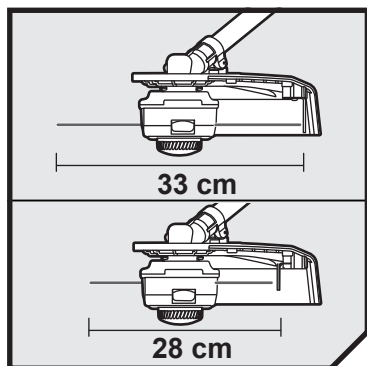
NOTE: For best cutting, advance the cutting line until it is trimmed to length by the cut-off blade.

NOTE: Cut tall grass from the top down. This prevents grass from wrapping around the shaft housing and bump head, which may cause damage from overheating.

NOTE: For cutting ease and safety, cut the grass from the right side to the left side.



OPERATION

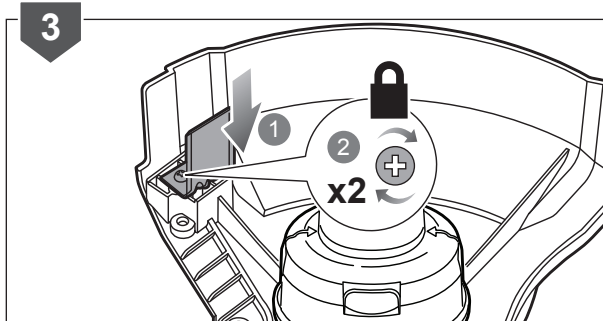
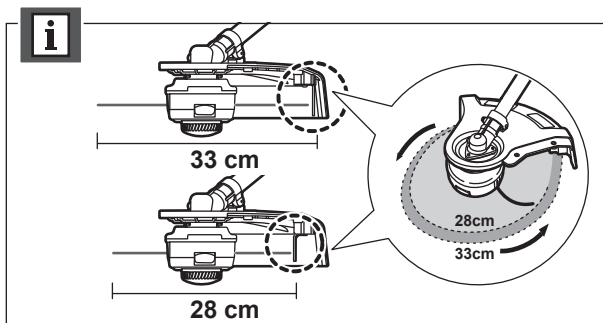
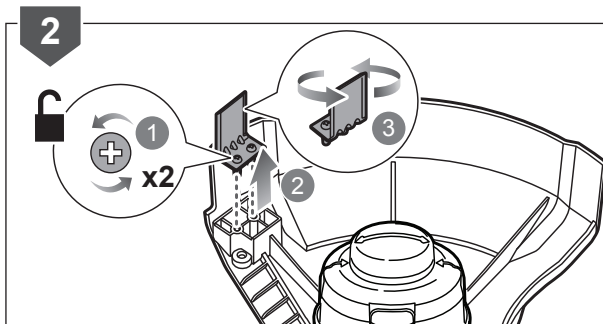
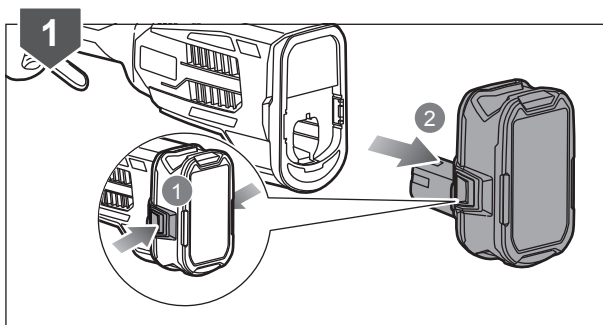


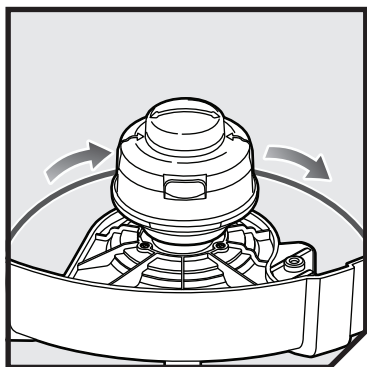
ADJUSTING THE CUTTING LINE

1. Press the battery latch button, and remove the battery pack.
2. Loosen the screws on the line cut-off blade. Remove the blade. Rotate the blade 180°.

NOTE: Runtime is increased on 28 cm setting.

3. Install the line cut-off blade into the new position. Screw on the blade to secure.

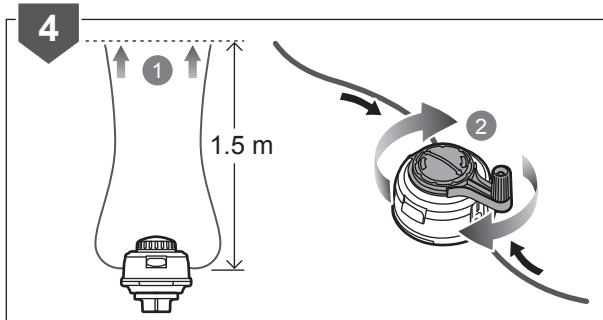
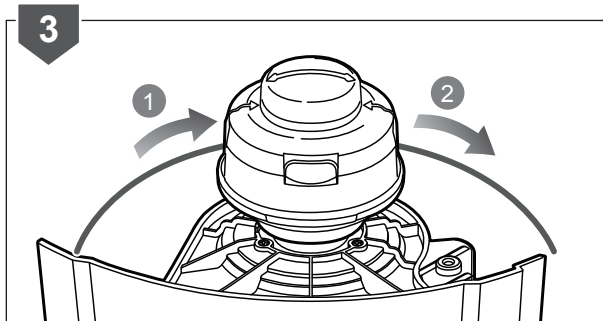
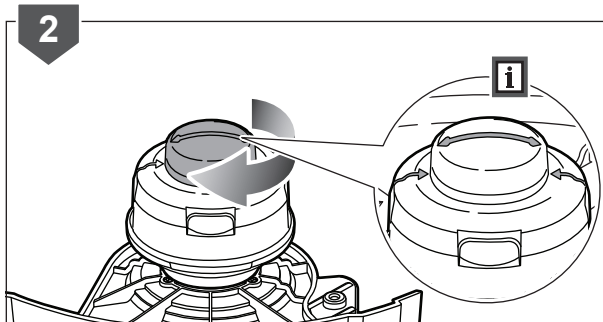
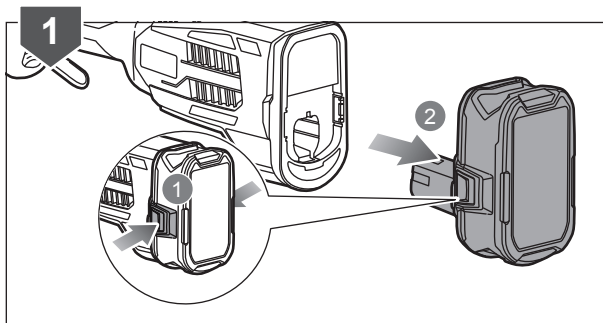




REPLACING THE LINE

1. Press the battery latch button, and remove the battery pack.
2. Rotate the bump knob on the trimmer head until the line on the centre of the bump knob aligns with the arrows on the outer spool.
3. Use a 2.0 mm diameter line. Cut one piece of the line, approximately 3.0 m in length. Insert one end of the line through the eyelet on the side of the trimmer head, and push until the line comes out through the eyelet on the other side. Continue to push the line through the trimmer head until the line is even in length on both sides.
4. Ensure that there are equal lengths of line on either side of the trimmer head (max. 1.5 m per side). Rotate the bump knob with the speed winder handle on the trimmer head to wind the line.

NOTE: The bump knob can also be rotated by hand.



OPERATION

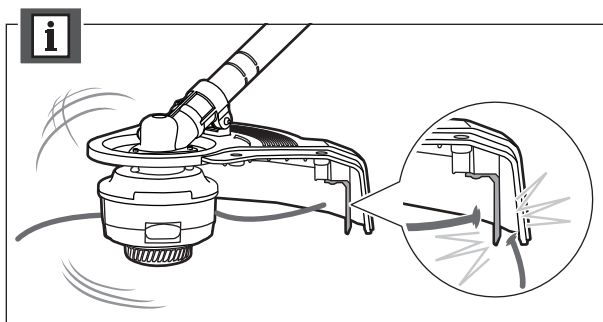
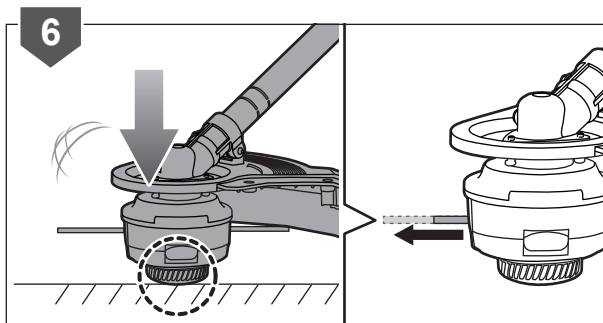
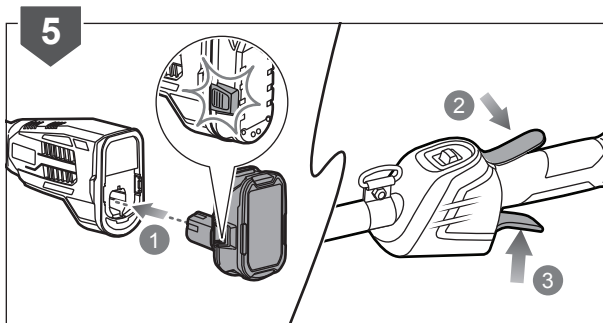
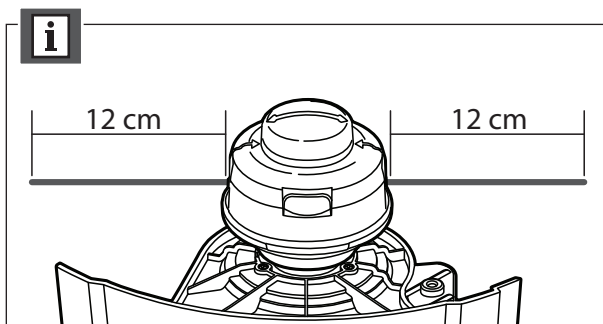
NOTE: Wind the line until approximately 12 cm remains protruding from the trimmer head.

5. Insert the battery pack until the battery latch button clicks into place. Push the lock-out trigger and squeeze the variable speed trigger to operate the product.

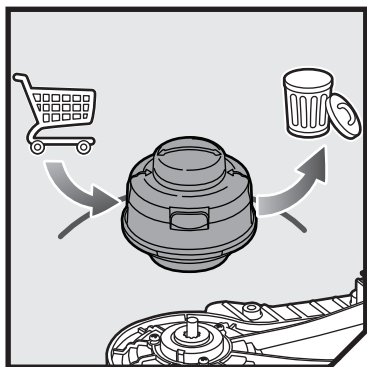
6. Tap the bump knob on the ground to advance the line. The line advances each time that the head is tapped. Do not hold the knob onto the ground.

NOTE: Only tap the bump knob onto grass as bumping it onto a hard surface will damage the trimmer head.

NOTE: The small blade fitted to the cutting attachment guard is designed to trim the newly extended line to the correct length for safe and optimum performance. The blade is very sharp. Do not touch the blade, particularly when cleaning the product.

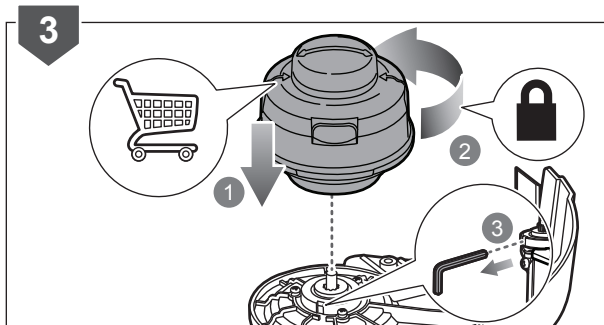
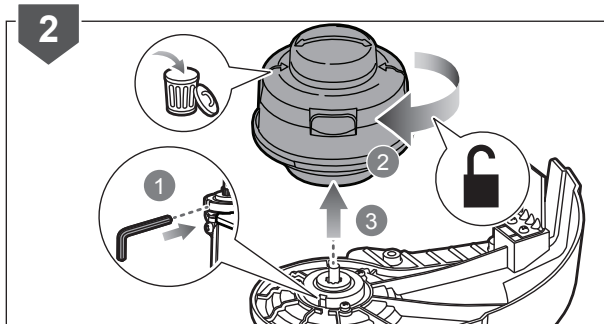
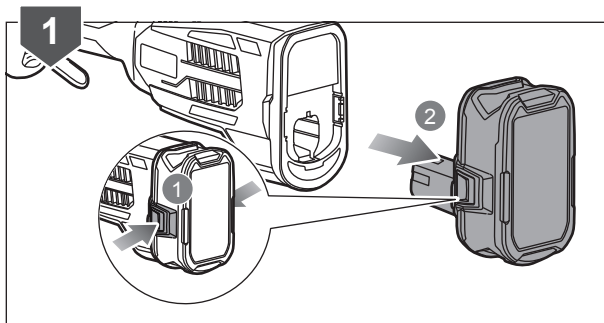


OPERATION

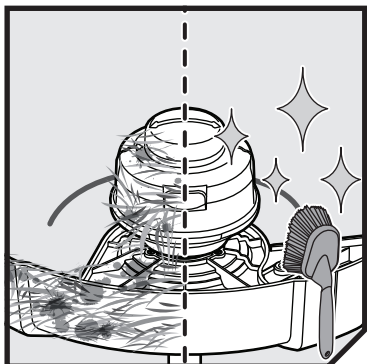


REPLACING THE TRIMMER HEAD

1. Press the battery latch button, and remove the battery pack.
2. Insert the allen wrench into the slot underneath the trimmer head. Loosen and remove the trimmer head.
3. Install the new trimmer head. Tighten the trimmer head to secure. Remove the allen wrench.



MAINTENANCE

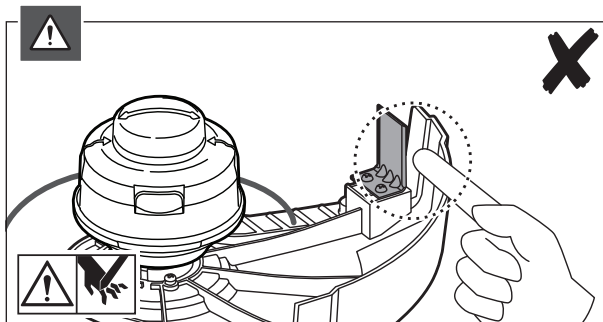
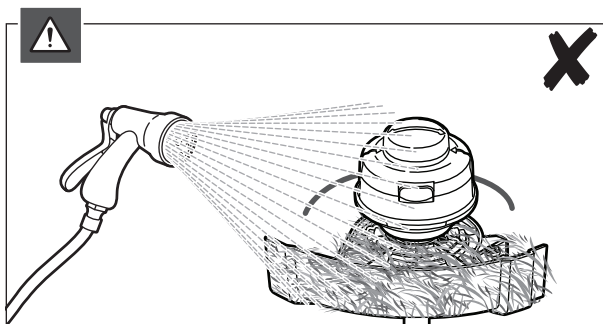
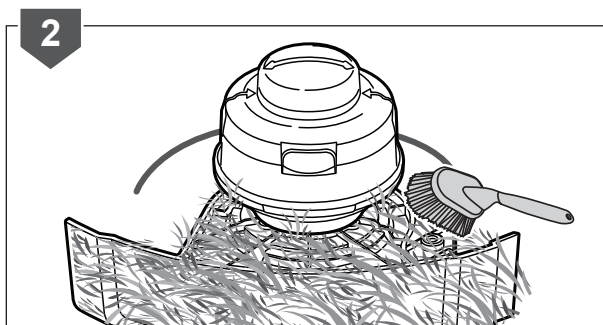
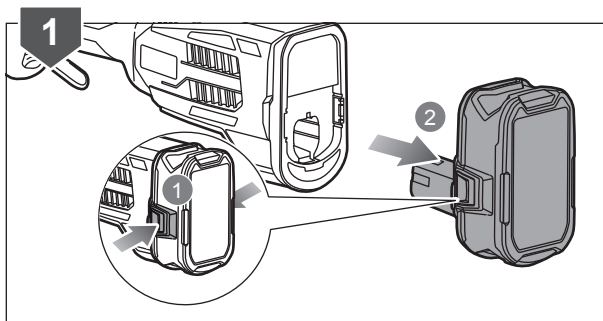


CLEANING THE PRODUCT

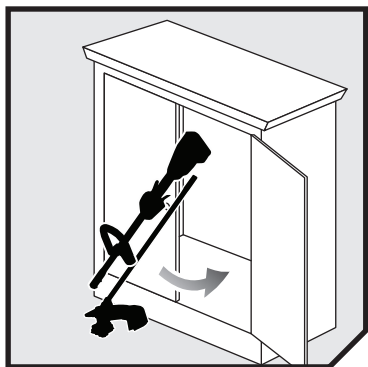
1. Press the battery latch button, and remove the battery pack.
2. Clean the product with a soft, dry brush.

WARNING: Avoid using solvents when cleaning plastic parts. Most plastics are susceptible to damage from various types of commercial solvents and may be damaged by their use.

WARNING: The small blade fitted to the cutting attachment guard is designed to trim the new extended line to the correct length for safe and optimum performance. The blade is very sharp. Do not touch the blade, particularly when cleaning the product.



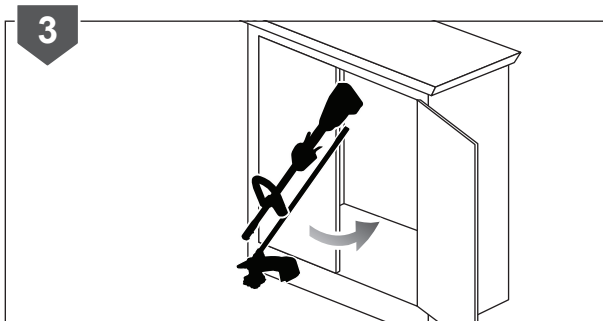
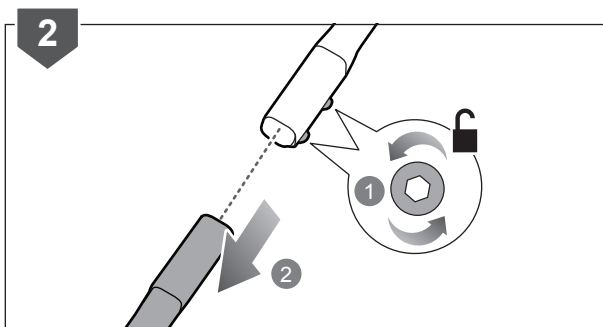
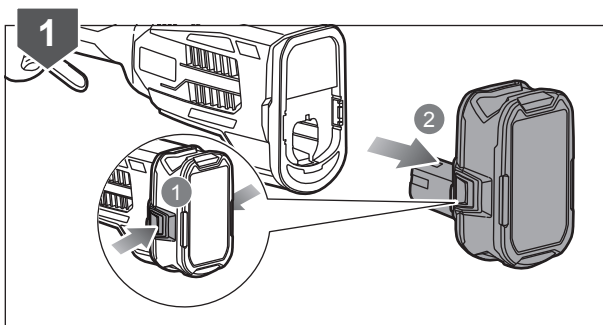
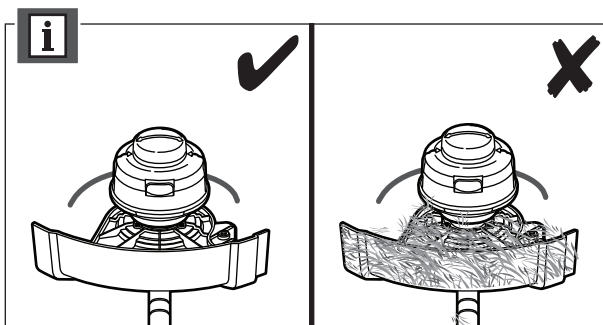
STORAGE



STORING THE PRODUCT

NOTE: Clean the product before storing.

1. Press the battery latch button, and remove the battery pack.
2. Loosen and remove the lower shaft from the upper shaft.
3. Store the product in a cool, dry, and well-ventilated place that is inaccessible to children. Keep the product away from corrosive agents, such as garden chemicals and de-icing salts. Do not store the product outdoors.



PRODUCT SPECIFICATIONS

Cordless Line Trimmer / Edge Trimmer

Model RLT1833BL4 / OLT1833BL

Voltage 18 V

No-load speed

High speed 0–6200/min

Low speed 0–5200/min

Cutting capacity 28 cm / 33 cm

Cutting line diameter 2.0 mm

Weight without battery pack 3.3 kg

Weight with heaviest battery pack 4.5 kg

Cutting width 280/330 mm

Noise emission values determined according to IEC 60335-2-91

A-weighted sound pressure level $L_{pA} = 84.3$ dB

Uncertainty $K = 2.5$ dB

A-weighted sound power level $L_{WA} = 95.7$

Uncertainty $K = 2.5$ dB

Vibration total values determined according to IEC 60335-2-91

Vibration emission value

Front handle $a_h = 3.9$ m/s²

Rear handle $a_h = 4.7$ m/s²

Uncertainty $K = 1.5$ m/s²

BATTERY AND CHARGER

Model RLT1833BL4 OLT1833BL

Battery pack RB18L40 —

Charger RC18120 —

Compatible battery packs RB18L13, RB18L15, RB18L20, RB18L25, RB18L26, RB18L40, RB18L20A, RB18L50, RB18L60A, RB18L90A

Compatible chargers RC18120, BCL1418H, BCL14183H, BCL1418IV*, RC18150U, BCS618G, RC18627U, RC18115

*BCL1418IV is compatible for charging in vehicles with 12 V DC outlets.

REPLACEMENT PARTS

Replacement head RAC1214

Replacement bump knob 530455007

Replacement 2.0 mm trimming line PWFTL2050T

VIBRATION LEVEL

⚠ WARNING

The declared vibration value has been measured with a standard test method and may be used to compare one tool with another.

The declared vibration value may be used in a preliminary assessment of exposure.

The vibration emission during actual use of power tool can differ from the declared total value depending on the ways in which the tool is used.

Identify safety measures to protect yourself based on an estimation of exposure in the actual conditions of use, taking account of all parts of the operating cycle such as the times when the tool is switched off and when it is running idle in addition to the trigger time.



*RYOBI is a trademark of Ryobi Limited,
and is used under license.
© 2017–20 Techtronic Cordless GP.*

Imported by:

Techtronic Industries Australia Pty Ltd
31 Gilby Road, Mount Waverley, VIC 3149,
Melbourne, Australia

Techtronic Industries N.Z. Limited
Unit C, 70 Business Parade South,
Highbrook, Auckland 2013, New Zealand