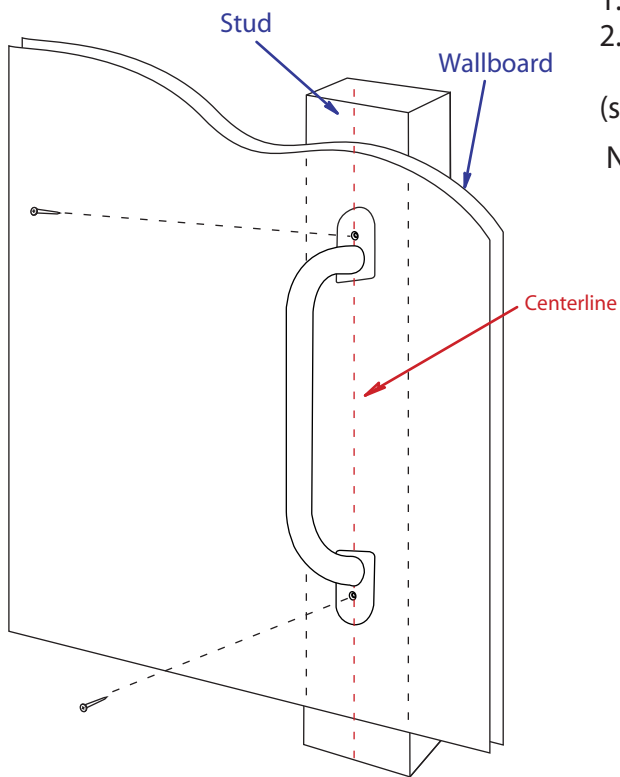


1



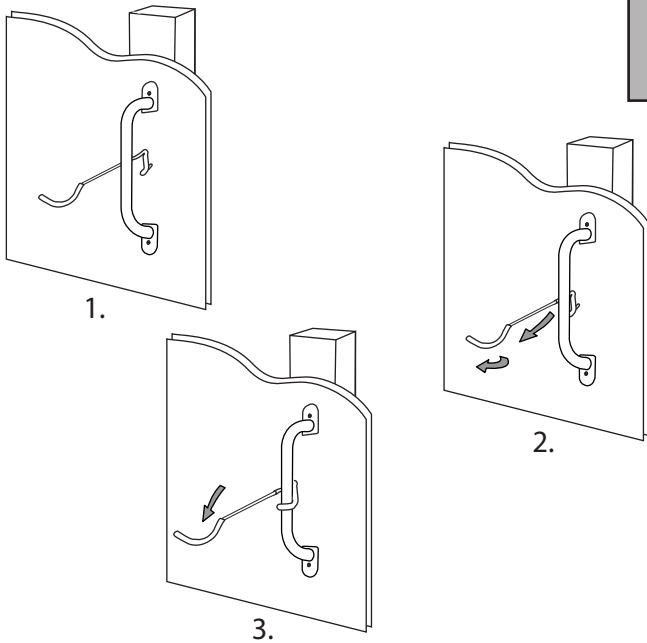
1. Locate Stud beneath wallboard.
 2. Position bar at desired height and screw into place.
(screws should be in center of Wall Stud)
- NOTE: Make sure the bar is level when mounting.

IMPORTANT WARNINGS:

DO NOT EXCEED MAXIMUM
TOTAL WEIGHT LIMIT OF
40 LBS (18 Kgs)

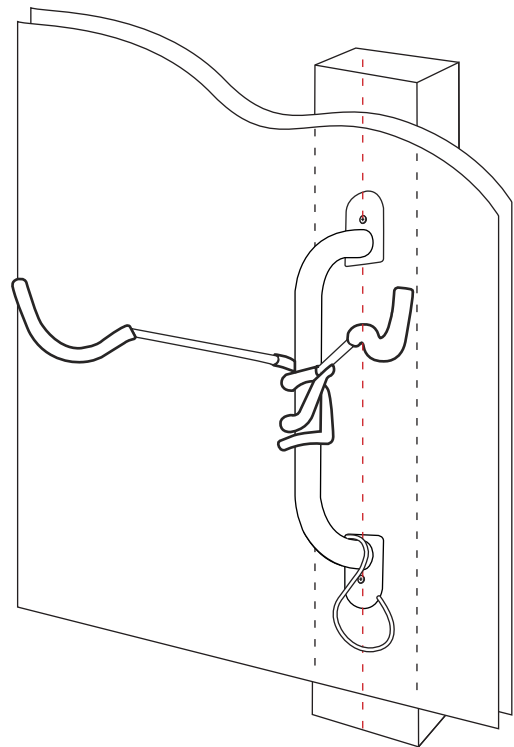
Incorrect wall mounting
could result in items
falling and injury to persons.

2



1. Place first hook behind bar sideways.
2. Pull towards you and twist up.
3. Push down to lock into place.
4. Repeat step 1 with second hook.

3



theartofstorage™

Delta Designs
36 York Ave
Randolph, MA, 02368
United States of America

Rossetti RS6300
ASSEMBLY DIAGRAM

© Copyright 2016