



CobraTap™

Product Description

Thread angles are designed for maximum holding power. Made of heat treated steel with special corrosion resistant coating. Socket Drive and drill bit are included as a bonus in all packs of 25, 75 and 100.



Features & Benefits

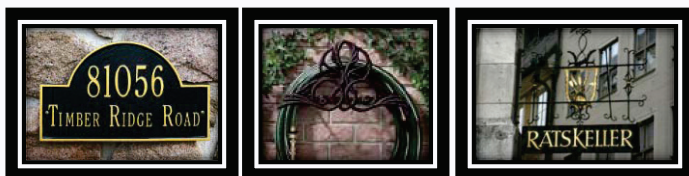
- HIGH GRADE HEAT TREATED STEEL to ensure the best torque, pull and shear performance.
- CORROSION RESISTANT Cobra-Coat to maximize corrosion resistance .
- HIGH & LOW THREAD for an ease of installation and maximum holding power .
- Bonus: Socket drive & drill bit included in all 25, 75 and 100 piece packs .
- Bonus: Drill bit included in 10 piece packs .
- ACQ compatible.

Product sizes & Materials

High Grade Steel with Cobra-Coat
(Rust resistant coating)

3/16" X 1 1/4"
3/16" X 1 3/4"
3/16" X 2 1/4"
3/16" X 2 3/4"
3/16" X 3 1/4"
3/16" X 3 3/4"
3/16" X 4"
1/4" X 1 1/4"
1/4" X 1 3/4"
1/4" X 2 1/4"
1/4" X 2 3/4"
1/4" X 3 1/4"
1/4" X 3 3/4"
1/4" X 4"

Perfect for:



Architectural facades ,Ornamental fixtures ,Signs etc...

Suitable Base Materials

- Concrete
- Brick
- Hollow Block

Masonry Anchors



CobraTap™



Load Capacities



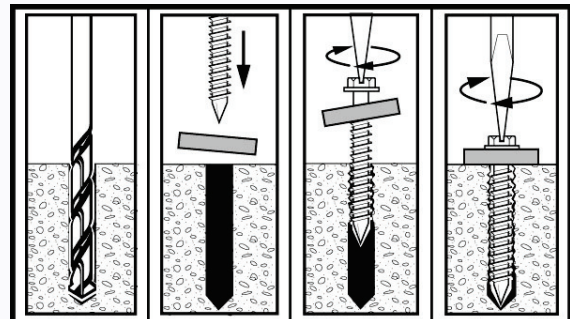
Material	Diameter Screw Size	Drill size	Min. Embedment	PULL MAX lbs	PULL SAFE lbs	SHEAR MAX lbs	SHEAR SAFE lbs
Concrete 3000 PSI	3/16"	5/32"	1-1/4"	650 lbs	162 lbs	800 lbs	200 lbs
	1/4"	3/16"	1-1/4"	1400 lbs	350 lbs	1700 lbs	425 lbs

Tools required



Installation instructions

1. Drill the appropriate size hole into the base material (see chart above for drill size).
2. Remove dust and debris from the hole.
3. Insert the screw through the object you need to affix and into the drilled hole.
4. Screw clockwise until there is a firm resistance.



Packaging:

