



R18CLV



IMPORTANT!

It is essential that you read the instructions in this manual before assembling, operating, and maintaining the product.

Subject to technical modification.

Safety, performance, and dependability have been given top priority in the design of your cordless cultivator.

INTENDED USE

The cordless cultivator is intended only for outdoor use by a standing operator walking with the product. For safety reasons, the product must be adequately controlled by using two-handed operation at all times.

The product is designed for cultivating or loosening soil in an open domestic garden area. The maximum working depth of the product is 10 cm deep and 20 cm wide.

The product should be used only as described in this manual.

Do not use the product for any other purpose.

GENERAL PRODUCT SAFETY WARNINGS

⚠ WARNING! Read all safety warnings, instructions, illustrations, and specifications provided with this power tool. Failure to follow all instructions listed below may result in electric shock, fire, and/or serious injury.

Save all warnings and instructions for future reference.

The term "power tool" in the warnings refers to your mains-operated (corded) or battery-operated (cordless) product.

WORK AREA SAFETY

- Keep work area clean and well lit. Cluttered or dark areas invite accidents.
- Do not operate power tools in explosive atmospheres, such as in the presence of flammable liquids, gases or dust. Power tools create sparks which may ignite the dust or fumes.
- Keep children and bystanders away while operating a power tool. Distractions can cause you to lose control.

PERSONAL SAFETY

- Stay alert, watch what you are doing and use common sense when operating a power tool. Do not use a power tool while you are tired or under the influence of

drugs, alcohol or medication. A moment of inattention while operating power tools may result in serious personal injury.

- Use personal protective equipment. Always wear eye protection. Protective equipment such as a dust mask, non-skid safety shoes, hard hat or hearing protection used for appropriate conditions will reduce personal injuries.
- Prevent unintentional starting. Ensure the switch is in the off-position before connecting to power source and/or battery pack, picking up or carrying the tool. Carrying power tools with your finger on the switch or energising power tools that have the switch on invites accidents.
- Remove any adjusting key or wrench before turning the power tool on. A wrench or a key left attached to a rotating part of the power tool may result in personal injury.
- Do not overreach. Keep proper footing and balance at all times. This enables better control of the power tool in unexpected situations.
- Dress properly. Do not wear loose clothing or jewellery. Keep your hair and clothing away from moving parts. Loose clothes, jewellery or long hair can be caught in moving parts.
- If devices are provided for the connection of dust extraction and collection facilities, ensure these are connected and properly used. Use of dust collection can reduce dust-related hazards.
- Do not let familiarity gained from frequent use of tools allow you to become complacent and ignore tool safety principles. A careless action can cause severe injury within a fraction of a second.

POWER TOOL USE AND CARE

- Do not force the power tool. Use the correct power tool for your application. The correct power tool will do the job better and safer at the rate for which it was designed.
- Do not use the power tool if the switch does not turn it on and off. Any power tool that cannot be controlled with switch is dangerous and must be repaired.
- Disconnect the plug from the power source and/or remove the battery pack, if detachable, from the power tool before making any adjustments, changing accessories, or storing power tools. Such preventive safety measures reduce the risk

of starting the power tool accidentally.

- Store idle power tools out of the reach of children and do not allow persons unfamiliar with the power tool or these instructions to operate the power tool. Power tools are dangerous in the hands of untrained users.
- Maintain power tools and accessories. Check for misalignment or binding of moving parts, breakage of parts and any other condition that may affect the power tool's operation. If damaged, have the power tool repaired before use. Many accidents are caused by poorly maintained power tools.
- Keep cutting tools sharp and clean. Properly maintained cutting tools with sharp cutting edges are less likely to bind and are easier to control.
- Use the power tool, accessories and tool bits etc. in accordance with these instructions, taking into account the working conditions and the work to be performed. Use of the power tool for operations different from those intended could result in a hazardous situation.
- Keep handles and grasping surfaces dry, clean and free from oil and grease. Slippery handles and grasping surfaces do not allow for safe handling and control of the tool in unexpected situations.

BATTERY TOOL USE AND CARE

- Recharge only with the charger specified by the manufacturer. A charger that is suitable for one type of battery pack may create a risk of fire when used with another battery pack.
- Use power tools only with specifically designated battery packs. Use of any other battery packs may create a risk of injury and fire.
- When battery pack is not in use, keep it away from other metal objects, like paper clips, coins, keys, nails, screws or other small metal objects, that can make a connection from one terminal to another. Shorting the battery terminals together may cause burns or a fire.
- Under abusive conditions, liquid may be ejected from the battery; avoid contact. If contact accidentally occurs, flush with water. If liquid contacts eyes, additionally seek medical help. Liquid ejected from the battery may cause irritation or burns.
- Do not use a battery pack or tool that is damaged or modified. Damaged or

modified batteries may exhibit unpredictable behaviour resulting in fire, explosion or risk of injury.

- Do not expose a battery pack or tool to fire or excessive temperature. Exposure to fire or temperature above 130°C may cause explosion.
- Follow all charging instructions and do not charge the battery pack or tool outside the temperature range specified in the instructions. Charging improperly or at temperatures outside the specified range may damage the battery and increase the risk of fire.

CULTIVATOR SAFETY WARNINGS

- Use the product across the face of slopes; never up and down. Exercise extreme caution when changing direction on slopes.
- Exercise extreme caution when reversing or pulling the product towards you.
- Never pick up or carry the product while the motor is running.
- Use the product only in daylight or with good artificial light.
- Keep proper footing and balance at all times, especially on slopes. Walk, never run.
- Do not use the product near drop-offs, ditches, excessively steep slopes, or embankments. Poor footing could cause a slip-and-fall accident.
- Avoid working the soil when soggy or wet. Wait a day or two after heavy rain for the ground to dry.
- Keep hands and feet away from the rotating tines at all times and especially when turning on the motor.
- Turn off the product, and remove the battery pack. Make sure that all moving parts have come to a complete stop:
 - before leaving the product unattended
 - before cleaning the product or clearing a blockage
 - before checking for any damage after hitting an object
 - if the machine starts to vibrate abnormally (check immediately)
 - before performing maintenance
- Read the instructions carefully. Be familiar with the controls and the correct use of the product.

- Never allow children or people unfamiliar with these instructions to use the product. Local regulations may restrict the age of the operator.
- Never operate the product while people, especially children, or pets are nearby. Keep in mind that the operator or user is responsible for accidents or hazards.
- While operating the product, always wear substantial footwear and long trousers. While operating the product always wear substantial footwear and long trousers.
- Thoroughly inspect the area where the product is to be used and remove all objects which can be thrown by the product.
- Before each use, always visually inspect to see, that the housing is undamaged and that guards and handles are in place and properly secured. Replace worn or damaged components in sets to preserve balance.

ADDITIONAL BATTERY SAFETY WARNINGS

To reduce the risk of fire, personal injury, and product damage due to a short circuit, never immerse your tool, battery pack or charger in fluid or allow fluid to flow inside them. Corrosive or conductive fluids, such as seawater, certain industrial chemicals, and bleach or bleach-containing products, etc., can cause a short circuit.

TRANSPORTATION AND STORAGE

- Turn off the product, and remove the battery pack. Make sure that all moving parts have come to a complete stop. Allow the product to cool down before storing or transporting.
- Remove all foreign materials from the product. Store the product in a cool, dry, and well-ventilated place that is inaccessible to children. Keep the product away from corrosive agents, such as garden chemicals and de-icing salts. Do not store the product outdoors.
- For transportation in a vehicle, secure the product against movement or falling to prevent injury to persons or damage to the product.

TRANSPORTING LITHIUM BATTERIES

Transport the battery pack in accordance with local and national provisions and regulations. Follow all special requirements on packaging and labelling when transporting batteries by a third party. Ensure that no batteries can come in contact with other batteries or conductive materials while in transport by protecting exposed connectors with insulating, non-conductive caps or tape. Do not transport battery packs that are cracked or leaking. Check with the forwarding company for further advice.

MAINTENANCE

- Use only original manufacturer's replacement parts, accessories, and attachments. Failure to do so can cause possible injury, can contribute to poor performance, and may void your warranty.
- Servicing requires extreme care and knowledge and should be performed only by a qualified service technician. Have the product serviced by an authorised service centre only.
- Check all nuts, bolts, and screws at frequent intervals for proper tightness to ensure that the product is in safe working condition.

SYMBOLS ON THE PRODUCT



Safety alert



Beware of thrown or flying objects. Keep all bystanders, especially children and pets, at least 15 m away from the operating area.



Read and understand all instructions before operating the product. Follow all warnings and safety instructions.



Wear eye protection.



Wear hearing protection.



Do not expose to rain or damp condition



Guaranteed sound power level



Keep feet and hands away from rotating tines.



Regulatory Compliance Mark (RCM). The product meets applicable regulatory requirements.



Waste electrical products should not be disposed of with household waste. Please recycle where facilities exist. Check with your local authority or retailer for recycling advice.

SYMBOLS IN THIS MANUAL



Parts or accessories sold separately



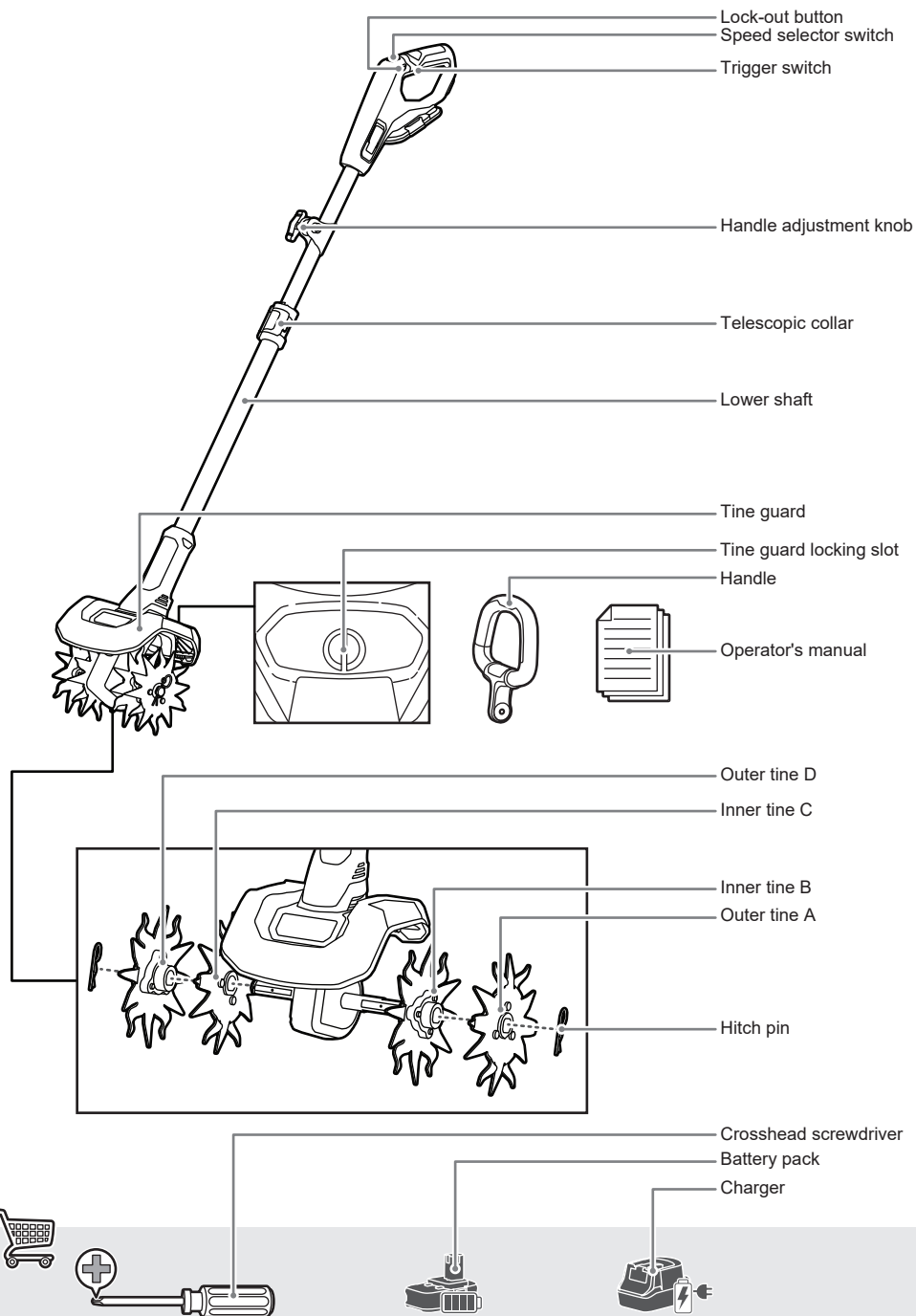
Note

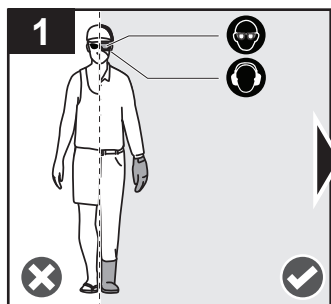


Warning

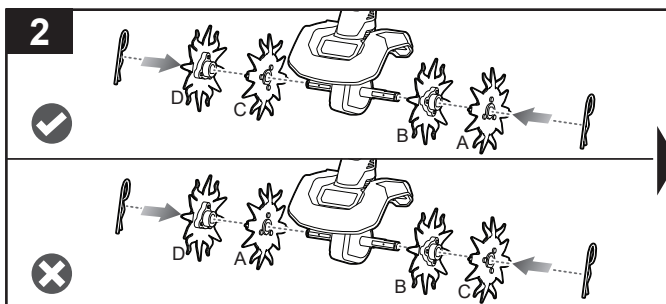


R18CLV

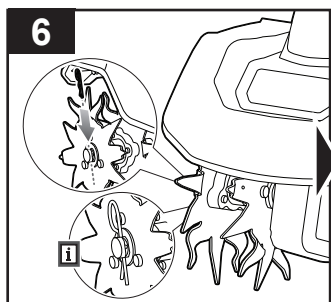




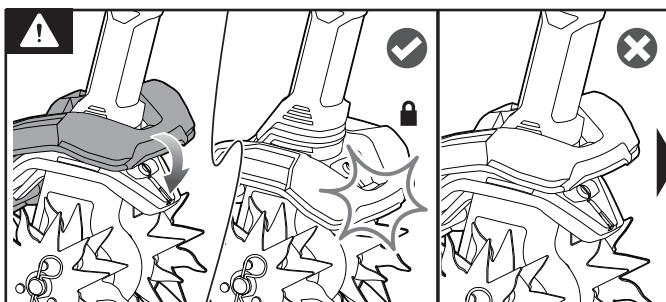
Always wear safety goggles or safety glasses with side shields when operating the product. Failure to do so could result in objects being thrown into your eyes, resulting in possible serious injury.



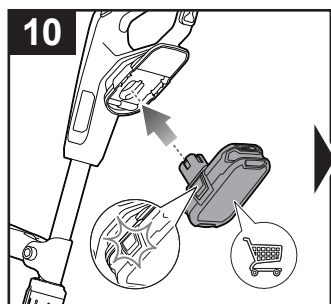
NOTE: The product will not operate properly if the tines are installed incorrectly.



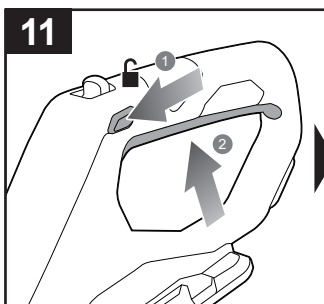
Insert the hitch pin into the holes located on the side of the tine shaft.



WARNING: Do not operate the product if the tine guard is not locked. Make sure that the tine guard is locked by pushing it down until it clicks into place.



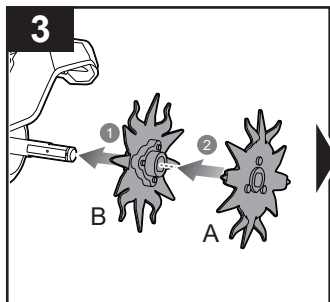
Install the battery pack until the latches snap into place. Make sure that the battery pack is securely attached before using the product.



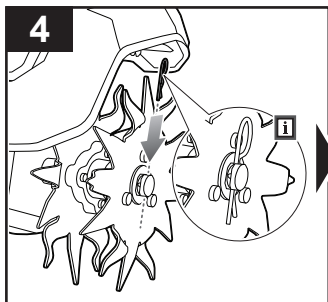
Press the lock-out button and squeeze the trigger to start operating the product.



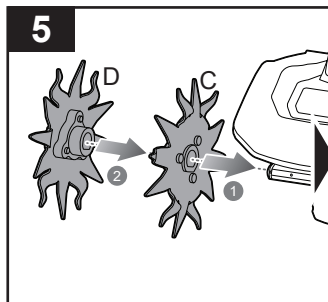
NOTE: The product must be adequately controlled by using two-handed operation at all times.



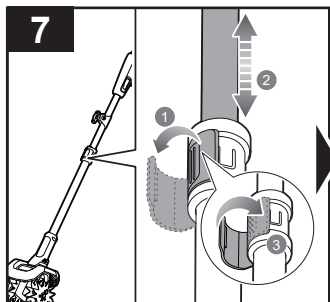
Place tine B on the tine shaft to the right of the gearbox. The stamped side of the tine should face toward the gearbox. Place a felt washer on the tine shaft. Place the outer tine labeled A on the right side of the tine shaft. The stamped side should face toward tine B.



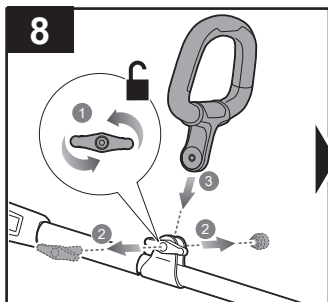
Insert the hitch pin into the holes located on the side of the tine shaft.



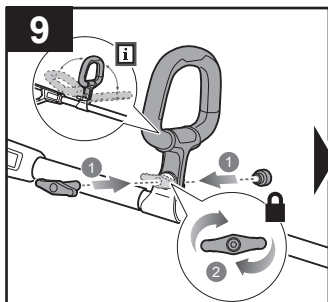
Place tine C on the tine shaft to the left of the gearbox. The stamped side of the tine should face away from the gearbox. Place a felt washer on the tine shaft. Place the outer tine labeled D on the left side of the tine shaft. The stamped side should face away from the gearbox.



Unlatch the telescopic collar to adjust the lower shaft to the preferred length. Latch the collar back to lock the shaft in place.



Turn the handle adjustment knob counterclockwise to release the knob. Install the front handle.

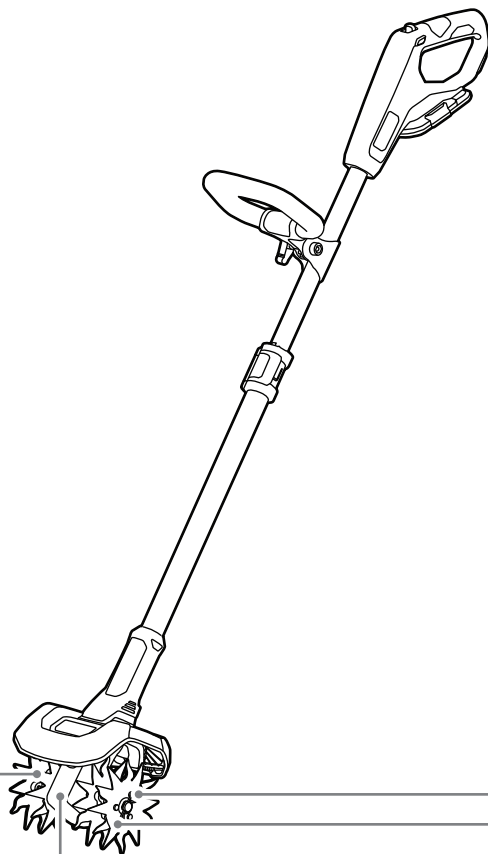


Insert the handle adjustment knob back in place. Turn the knob clockwise to secure it in place.

Four-tine operation **p.11**



Two-tine operation **p.13**

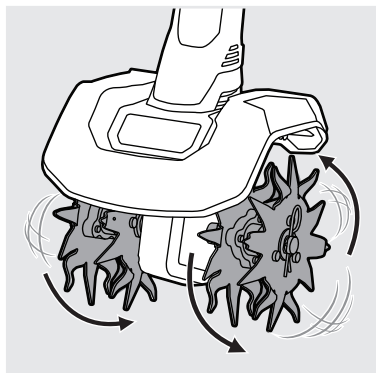


Cleaning the tines **p.15**



Storing the product **p.17**



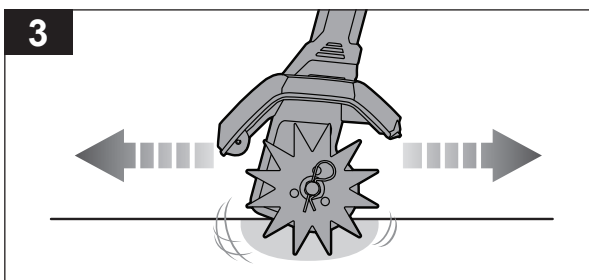
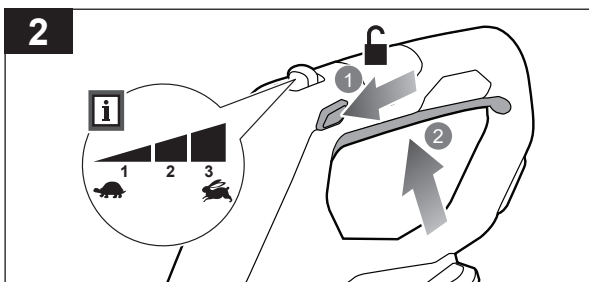
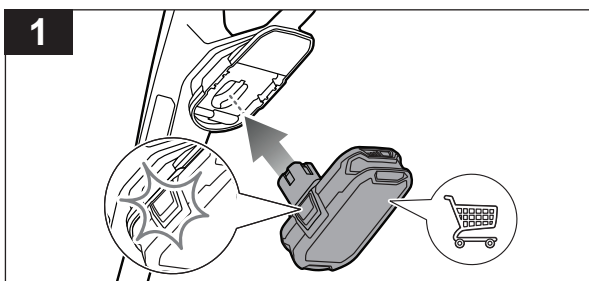
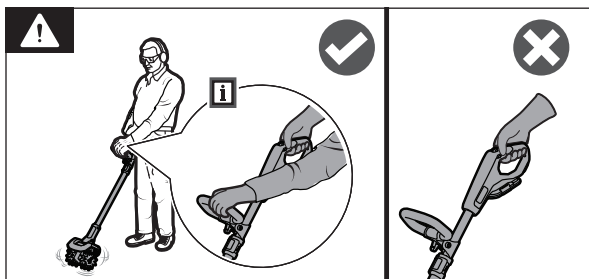
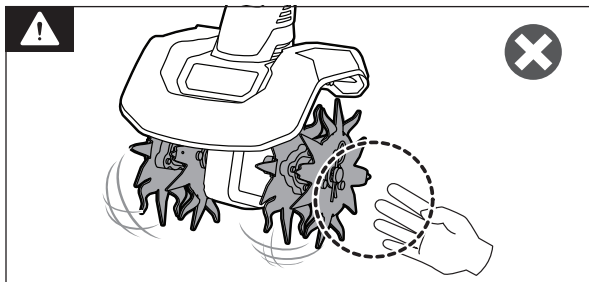


FOUR-TINE OPERATION

WARNING: Keep hands and feet away from the rotating tines at all times.

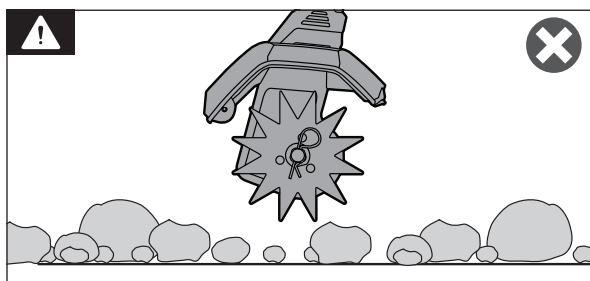
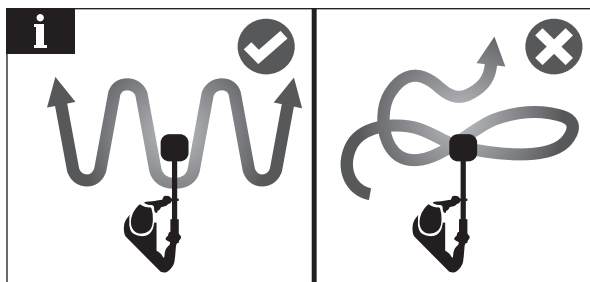
CAUTION: The product must be adequately controlled by using two-handed operation at all times.

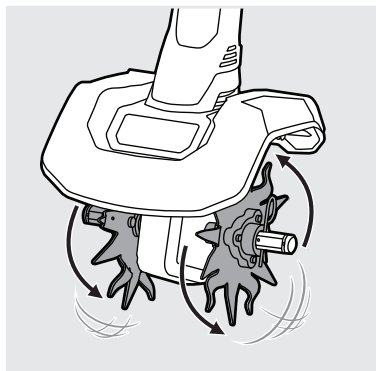
1. Install the battery pack until the latches snap into place. Make sure that the battery pack is securely attached before using the product.
2. Press the lock-out button, and squeeze the trigger to start operating the product. Use the speed selector switch to increase the power when necessary.
3. Pull or push the cultivator while it is digging in the soil's surface.



NOTE: For cultivating ease and safety, use a forward and backward motion when using the product.

WARNING: Never operate the product on rocky surfaces.



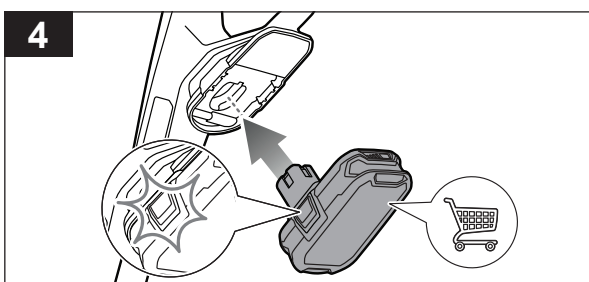
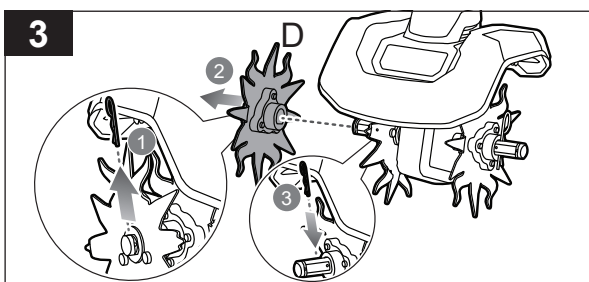
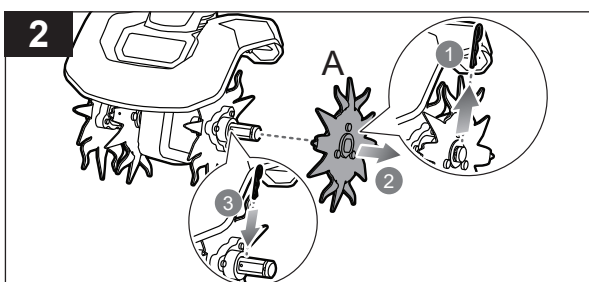
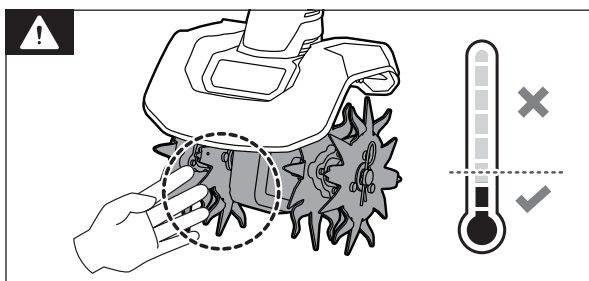
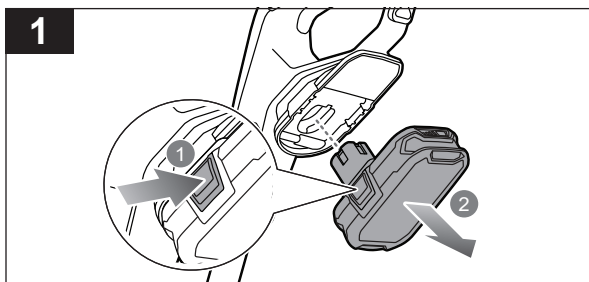


TWO-TINE OPERATION

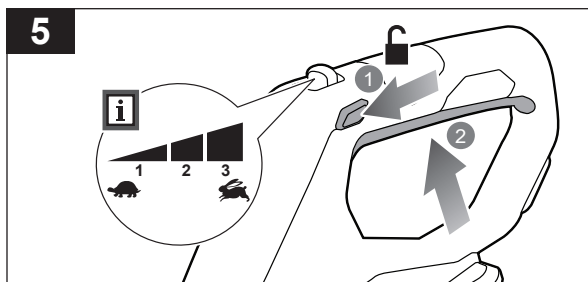
1. Press the latches on each side of the battery pack to remove the battery pack.

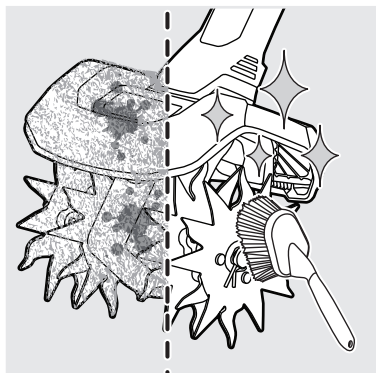
CAUTION: Wait for the product to cool before removing the tines.

2. Unlock the hitch pin, and remove tine A. Install the hitch pin back in place.
3. Unlock the hitch pin, and remove tine D. Install the hitch pin back in place.
4. Install the battery pack until the latches snap into place. Make sure that the battery pack is securely attached before using the product.



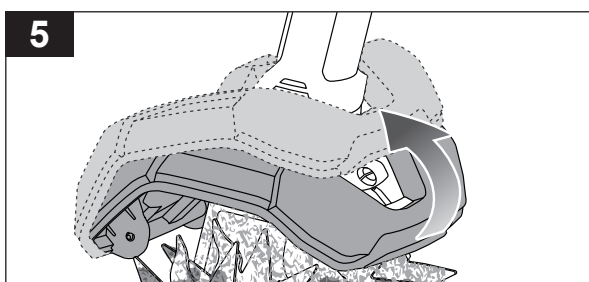
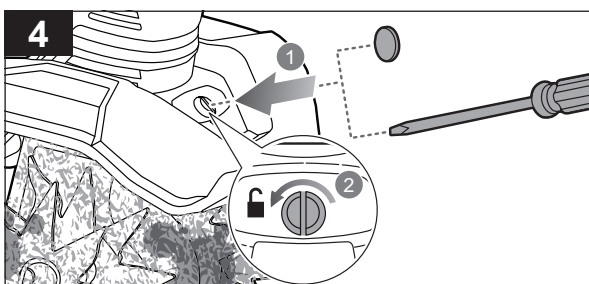
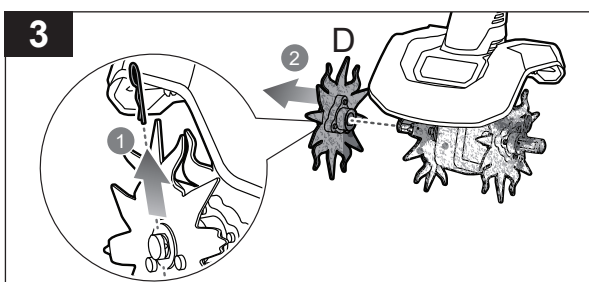
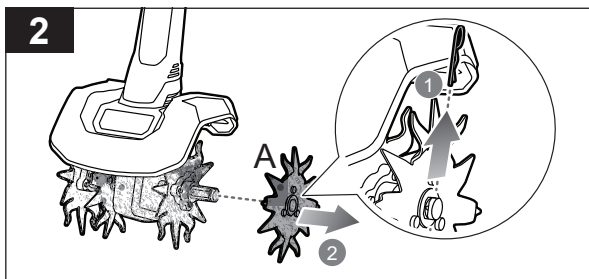
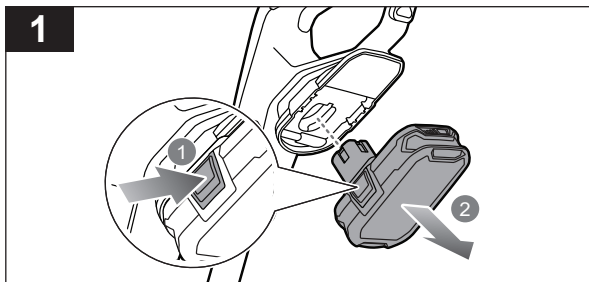
5. Press the lock-out button, and squeeze the trigger to start operating the product. Use the speed selector switch to increase the power when necessary.





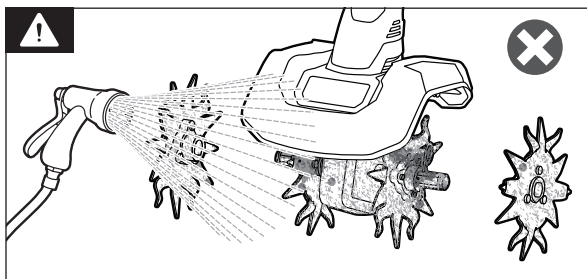
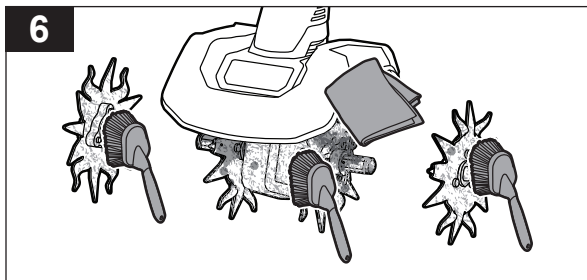
CLEANING THE TINES

1. Press the latches on each side of the battery pack to remove the battery pack.
2. Unlock the hitch pin and remove tine A.
3. Unlock the hitch pin and remove tine D.
4. Unlock the tine guard by using a coin or screwdriver to turn the slot counterclockwise.
5. Lift up the tine guard.



6. Clean the product with a soft, dry cloth, and clean the debris from the tines with a stiff brush.

WARNING: Do not use water to clean the tines.

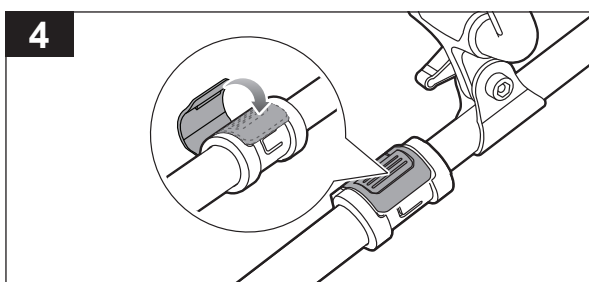
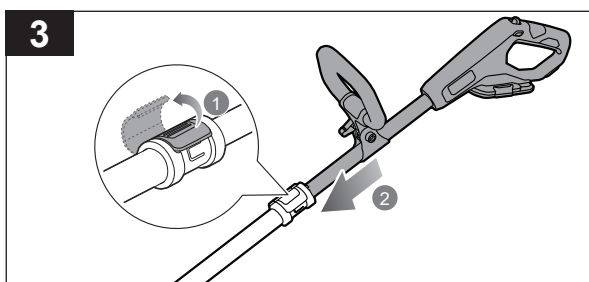
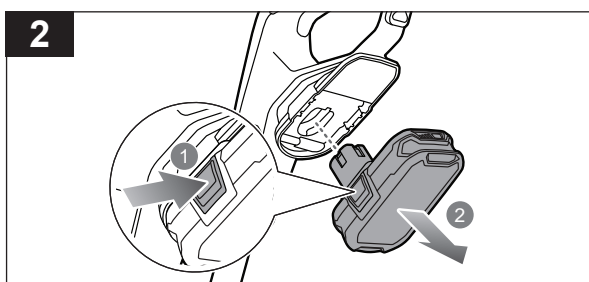
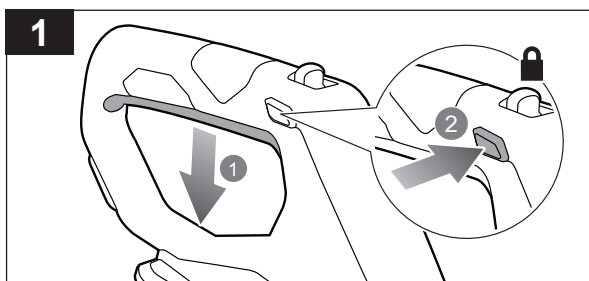
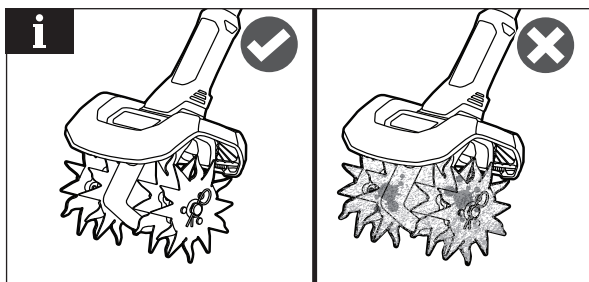




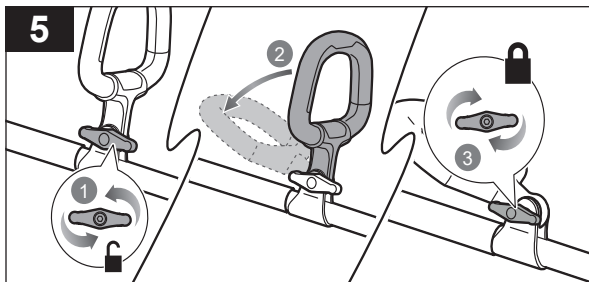
STORING THE PRODUCT

NOTE: Clean all foreign materials from the product.

1. Press the lock-out button to lock the trigger switch in place.
2. Press the latches on each side of the battery pack to remove the battery pack.
3. Unlatch the telescopic collar, and adjust the shaft to its minimum length.
4. Latch the telescopic collar back to lock the shaft in place.



5. Turn the handle adjustment knob counterclockwise, and press the front handle down. Turn the knob clockwise to secure the handle.
6. Store the product in a cool, dry, and well-ventilated place that is inaccessible to children and well away from sources of ignition.



PRODUCT SPECIFICATIONS

Cordless cultivator	
Model	R18CLV
Total weight	4.9 kg
Cultivator attachment	1.15 kg
Rated voltage	18 V d.c.
Maximum no-load speed	340 /min
Maximum working depth	10 cm x 20 cm
Noise emission values determined according to AS/NZS 62841.1:2015+A1:2016	
A-weighted sound pressure level at the operator position	75.8 dB(A)
Uncertainty	K = 3 dB
A-weighted sound power level	88.1 dB(A)
Uncertainty	K = 4.24 dB
Guaranteed sound power level	93 dB(A)
Vibration values determined according to AS/NZS 62841.1:2015+A1:2016	
Front handle	1.08 m/s ²
Rear handle	1.35 m/s ²
Uncertainty	K = 1.5 m/s ²

BATTERY AND CHARGER

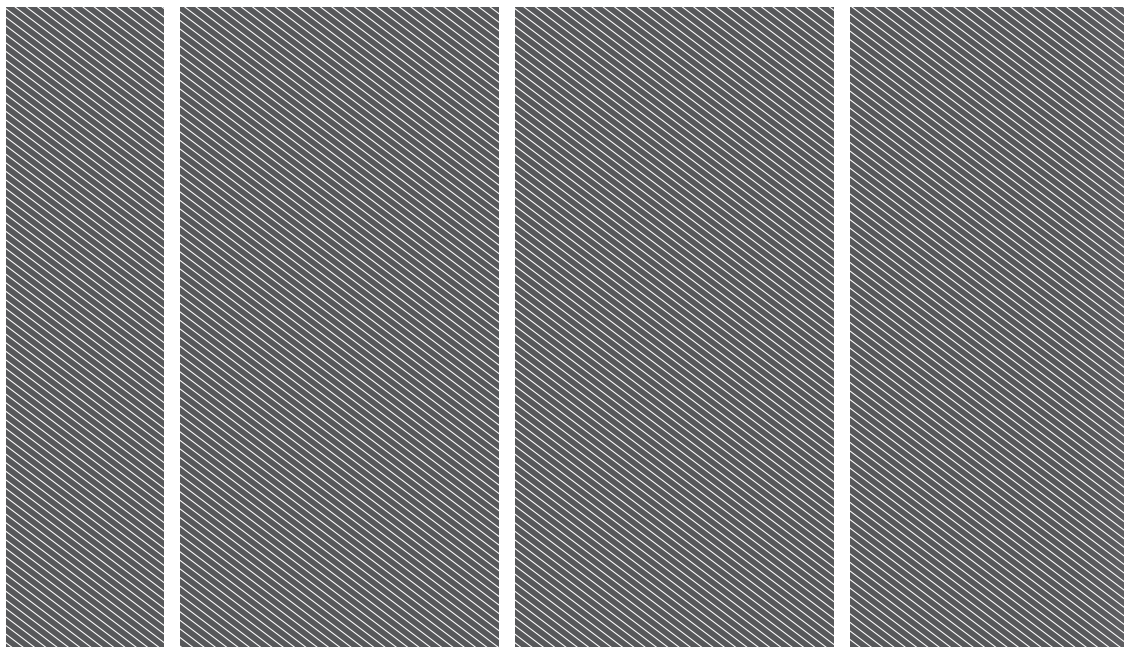
Model	R18CLV
Battery pack	not included
Weight	-
Charger	not included
Compatible battery packs	RB18L13, RB18L13Z, RB18L15, RB18L15A, RB18L15B, RB1815C, RB18L20A, RB1820C, RB18L25, RB18L25A, RB18L30A, RB18L40, RB18L40A, RB1840C, RB1840X, RB18L50, RB18L50A, RB18L60A, RB18L90A
Compatible charger	BCL14181H, BCL14183H, BCS618, RC18627U, RC18150, RC18150U, RC18120, RC, 18115, BCL1418IV

⚠ WARNING! The declared vibration total values and the declared noise emission values given in this instruction manual have been measured in accordance with a standardised test and may be used to compare one tool with another. They may be used for a preliminary assessment of exposure.

The declared vibration and noise emission values represent the main applications of the tool. However, if the tool is used for different applications, used with different accessories, or poorly maintained, the vibration and noise emission may differ. These conditions may significantly increase the exposure levels over the total working period.

An estimation of the level of exposure to vibration and noise should take into account the times when the tool is turned off or when it is running idle. These conditions may significantly reduce the exposure level over the total working period.

Identify additional safety measures to protect the operator from the effects of vibration and noise, such as maintaining the tool and the accessories, keeping the hands warm (in case of vibration), and organising work patterns.



Imported by:
Techtronic Industries Australia Pty Ltd
31 Gilby Road, Mount Waverley, VIC 3149
Melbourne, Australia

Techtronic Industries N.Z. Limited
Unit C, 70 Business Parade South,
Highbrook, Auckland 2013, New Zealand

RYOBI is a trade mark of Ryobi Limited, and is used under license.
© 2021 Techtronic Cordless GP

961479043-01

