

RYOBI®

**RLT36X20
RLT36BS**

ORIGINAL INSTRUCTIONS

Cordless Line Trimmer



Important!

It is essential that you read the instructions in this manual before assembling, operating, and maintaining the product.

Subject to technical modification.

Safety, performance, and dependability have been given top priority in the design of your cordless line trimmer.

INTENDED USE

The cordless line trimmer is intended to be used only by adults who have read and understood the instructions and warnings in this manual and can be considered responsible for their actions. The product is intended only for outdoor use by a standing operator in a well-ventilated area.

For safety reasons, the product must be adequately controlled by a two-handed operation.

When fitted with the line trimmer head (and appropriate guard), the product is intended for cutting long grass, pulpy weed, and similar vegetation at or about ground level.

The cutting plane should be approximately parallel to the ground surface when trimming. The product should not be used to cut or trim hedges, bushes, or other vegetation where the cutting plane is not parallel to the ground surface. Do not use the product for any other purpose.

GENERAL SAFETY WARNINGS

WARNING

Read all safety warnings and all instructions. Failure to follow the warnings and instructions may result in electric shock, fire and/or serious injury.

WARNING

When using the product, the safety rules must be followed. For your own safety and that of bystanders, please read these instructions before using the product. Please keep the instruction safe for later use.

WARNING

The product is not intended to be used by children or persons with reduced physical, mental, or sensory capabilities. Children should be adequately supervised to ensure that they do not play with the product.

WARNING

Some regions have regulations that restrict the use of the product. Check with your local authority for advice.

TRAINING

- Never allow children or people who are unfamiliar with these instructions to use the product. Local regulations may restrict the age of the operator.
- Read the instructions carefully. Be familiar with all controls and the proper use of the product.
- Keep bystanders, children, and pets 15 m away from the area of operation. Stop the product if anyone enters the area.
- Never use the product while tired, ill, or under the influence of alcohol, drugs, or under medication.
- Keep in mind that the operator or user is responsible

for accidents or hazards occurring to other people or their property.

PREPARATION

- Wear full eye and hearing protection while operating the product. If working in an area where there is a risk of falling objects, head protection must be worn.
- Hearing protection may restrict the operator's ability to hear warning sounds. Pay particular attention to potential hazards around and inside the working area.
- Wear heavy, long trousers, boots, and gloves. Do not wear loose-fitting clothing, short trousers, or jewellery of any kind, and do not use the product with bare feet.
- Secure long hair so that it is above shoulder level to prevent entanglement in moving parts.
- Before use and after any impact, check that there are no damaged parts. A defective switch or any part that is damaged or worn should be properly repaired or replaced by an authorised service centre.
- Make sure that the cutting attachment is properly installed and securely fastened.
- Never operate the product unless all guards, deflectors, and handles are properly and securely attached.
- Consider the environment in which you are working. Keep the working area free from wires, sticks, stones, and debris, which if struck by the cutter can become thrown objects.

BATTERY TOOL USE AND CARE

- Recharge only with the charger specified by the manufacturer. A charger that is suitable for one type of battery pack may create a risk of fire when used with another battery pack.
- Use power tools only with specifically designated battery packs. Use of any other battery packs may create a risk of injury and fire.
- When battery pack is not in use, keep it away from other metal objects, like paper clips, coins, keys, nails, screws or other small metal objects, that can make a connection from one terminal to another. Shorting the battery terminals together may cause burns or a fire.
- Under abusive conditions, liquid may be ejected from the battery; avoid contact. If contact accidentally occurs, flush with water. If liquid contacts eyes, additionally seek medical help. Liquid ejected from the battery may cause irritation or burns.

LINE TRIMMER SAFETY WARNINGS

- Never allow children, persons with reduced physical, sensory, or mental capabilities, or lack of experience and knowledge, or people who are unfamiliar with these instructions to use the product.
- Use the product in daylight or with good artificial light.
- Avoid using the product on wet grass.
- Keep proper footing and balance at all times and be sure of proper footing on slopes.
- Do not walk backwards when using the product.
- Walk, never run.
- Keep the head attachment below waist level.

- Do not operate the product with damaged guards or without guards in place.
- Do not fit a metal replacement line.
- Keep hands and feet away from the cutting means at all times and especially when turning on the motor.
- Beware, the cutting means continue to rotate after the motor is turned off.
- Beware of objects thrown by the cutting means. Clear debris like small stones, gravel, and other foreign objects from the work area before starting operation. Wires or string may become entangled with the cutting means.
- Turn off the product, and remove the battery pack. Make sure that all moving parts have come to a complete stop:
 - before servicing
 - before leaving the product unattended
 - before clearing a blockage
 - before checking, cleaning, and working on the product
 - before changing accessories
 - after striking a foreign object
 - whenever performing maintenance
 - whenever the product starts to vibrate abnormally
- Wear full eye and hearing protection while operating the product. If working in an area where there is a risk of falling objects, head protection must be worn.
- Hearing protection may restrict the operator's ability to hear warning sounds. Pay particular attention to potential hazards around and inside the working area.
- Wear heavy, long trousers, boots, and gloves. Do not wear loose fitting clothing, short trousers, jewellery of any kind, or use with bare feet.
- Secure long hair so that it is above shoulder level to prevent entanglement in moving parts.
- The small blade fitted to the lawn guard is designed to trim the new extended line to the correct length for safe and optimum performance. It is very sharp; do not touch it, particularly when cleaning the product.
- Always ensure that ventilation openings are kept clear of debris.
- Before use and after any impact, check that there are no damaged parts. A defective switch or any part that is damaged should be properly repaired or replaced by an authorised service centre.
- Make sure that the cutting head attachment is properly installed and securely fastened.
- Make sure that all the guards, deflectors, and handles are properly and securely attached.
- Do not modify the product in any way. This may increase the risk of injury to yourself or others.
- Use only the manufacturer's replacement cutting line. Do not use any other cutting attachment.
- Immediately turn off and remove the battery pack in the event of accident or breakdown. Do not operate the product again until it has been fully checked by an authorised service centre.

WARNING

Ensure that the line cut-off blade in the guard is properly positioned and secured before each use.

ADDITIONAL BATTERY SAFETY WARNINGS

WARNING

To reduce the risk of fire, personal injury, and product damage due to a short circuit, never immerse your tool, battery pack, or charger in fluid or allow a fluid to flow inside them. Corrosive or conductive fluids, such as seawater, certain industrial chemicals, and bleach or bleach-containing product, etc., can cause a short circuit.

TRANSPORTATION AND STORAGE

- Stop the product and allow it to cool down before storing or transporting. Do not store or transport the product with the battery pack fitted. Remove the battery pack and secure them separately.
- Clean all foreign material from the product. Store it in a cool, dry, and well-ventilated place that is inaccessible to children. Keep the product away from corrosive agents such as garden chemicals and de-icing salts. Do not store outdoors.
- For transportation in vehicles, secure the product against movement or falling to prevent injury to persons or damage to the product.

TRANSPORTING LITHIUM BATTERIES

Transport the battery pack in accordance with local and national provisions and regulations. Follow all special requirements on packaging and labelling when transporting batteries by a third party.

Ensure that no battery packs can come in contact with other batteries or conductive materials while in transport by protecting exposed connectors with insulating, non-conductive caps or tape. Do not transport battery packs that are cracked or leaking. Check with the forwarding company for further advice.

MAINTENANCE

WARNING

Use only original manufacturer's replacement parts, accessories, and attachments. Failure to do so can cause possible injury, can contribute to poor performance, and may void your warranty.

WARNING

Servicing requires extreme care and knowledge and should be performed only by a qualified service technician. Have the product serviced by an authorised service centre only. When servicing, use only original replacement parts.

- Turn off the product and remove the battery pack before conducting any maintenance or cleaning work.
- You may make adjustments and repairs described in this manual. For other repairs, contact an authorised service centre.
- Before any maintenance or adjustment, disable the product by removing the power source.
- For the replacement line, use only nylon filament line of the diameter described in the specification table of this manual.
- After extending the new cutter line, always return the product to its normal operating position before starting.
- After each use, clean the product with a soft, dry cloth. Any part that is damaged should be properly repaired or replaced by an authorised service centre.
- Check all nuts, bolts, and screws at frequent intervals for proper tightness to ensure the product is in safe working condition.
- Bring the product to an authorised service centre to replace damaged or unreadable labels.

BATTERY PROTECTION FEATURES

RYOBI 36 V lithium-ion batteries are designed with features that protect the lithium-ion cells and maximise battery life. If the product stops during use, the following may be the causes:

- The maximum current draw of the battery has been exceeded, causing it to automatically stop powering the product. Release the trigger to reset the product and pull the trigger to resume operation.
- Excessive temperatures will cause the battery to stop powering the product. Feel the battery pack; if it is too warm, allow it to cool down.

If the product still does not work, recharge the battery.

NOTE: The battery pack indicator LED will not work if the battery protection feature has caused the battery pack to stop powering the product. Release the tool trigger or remove the battery pack from the product and the battery pack LED indicator will resume to its normal function.

RESIDUAL RISKS

Even when the product is used as prescribed, it is still impossible to completely eliminate certain residual risk factors. The following hazards may arise during use, and the operator should pay special attention to avoid the following:

- injury caused by vibration
 - Hold the product by designated handles and restrict working time and exposure.
- injury caused by exposure to noise
 - Wear ear protection and limit exposure.

- injury caused by flying debris
 - Wear eye protection at all times.

RISK REDUCTION

It has been reported that vibrations from hand-held tools may contribute to a condition called Raynaud's Syndrome in certain individuals. Symptoms may include tingling, numbness, and blanching of the fingers, usually apparent upon exposure to cold. Hereditary factors, exposure to cold and dampness, diet, smoking, and work practices are all thought to contribute to the development of these symptoms. There are measures that can be taken by the operator to possibly reduce the effects of vibration:

- Keep your body warm in cold weather. When operating the product, wear gloves to keep the hands and wrists warm. It is reported that cold weather is a major factor contributing to Raynaud's Syndrome.
- After each period of operation, exercise to increase blood circulation.
- Take frequent work breaks. Limit the amount of exposure per day.
- If you experience any of the symptoms of this condition, immediately discontinue use and see your physician.

WARNING

Injuries may be caused, or aggravated, by prolonged use of a tool. When using any tool for prolonged periods, ensure you take regular breaks.

WHAT'S IN THE BOX

See pages 5–6.

- Power head and upper boom assembly x 1
- Front handle x 1
- Grass deflector x 1
- Trimmer head assembly x 1
- Speed winder x 1
- Manual x 1
- Charger x 1
- Battery pack x 1

NOTE: For RLT36BS, the battery and charger are sold separately.

SYMBOLS ON THE PRODUCT



Read and understand all instructions before operating the product. Follow all warnings and safety instructions.



Do not use metal blade(s) on the product.



Do not expose to rain or damp condition.



Wear eye protection.



Wear ear protection.



Wear non-slip, heavy-duty gloves.



Wear non-slip, safety footwear when using the product.



Remove the battery pack before starting any work on the product.



Beware of thrown or flying objects. Keep all bystanders, especially children and pets, at least 15 m away from the operating area.



Keep hands away from cut-off blade.



Guaranteed sound power level



Waste electrical products should not be disposed of with household waste. Please recycle where facilities exist. Check with your local authority or retailer for recycling advice.



Regulatory compliance mark

SYMBOLS IN THIS MANUAL



Parts or accessories sold separately



Waste electrical products should not be disposed of with household waste. Please recycle where facilities exist.



Note



Warning

The following signal words and meanings are intended to explain the levels of risk associated with this product:

DANGER

Indicates an imminently hazardous situation, which, if not avoided, will result in death or serious injury.

WARNING

Indicates a potentially hazardous situation, which, if not avoided, could result in death or serious injury.

CAUTION

Indicates a potentially hazardous situation, which, if not avoided, may result in minor or moderate injury.

CAUTION

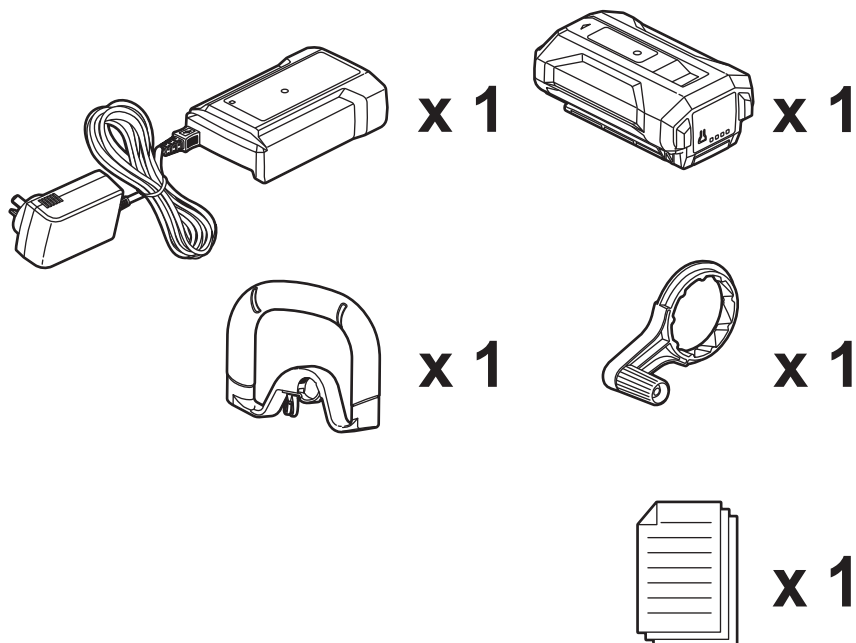
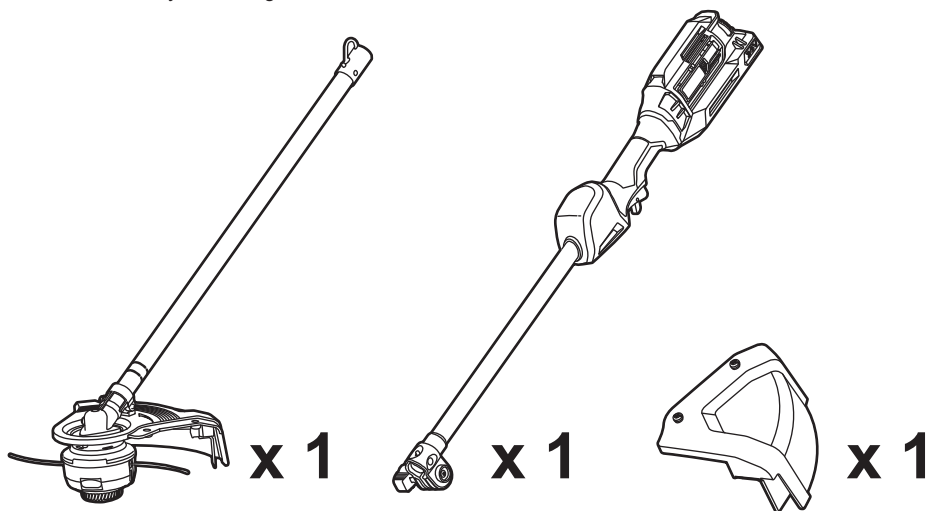
Without safety alert symbol

Indicates a situation that may result in property damage.

WHAT'S IN THE BOX

RLT36X20

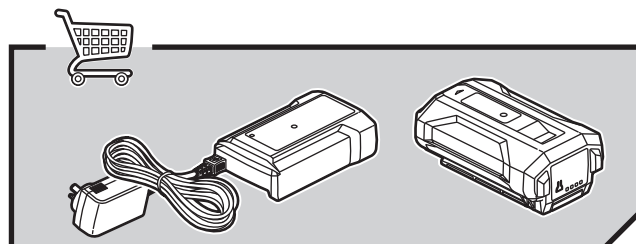
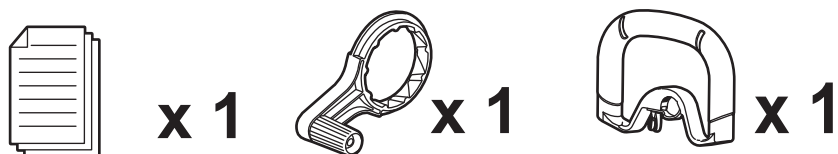
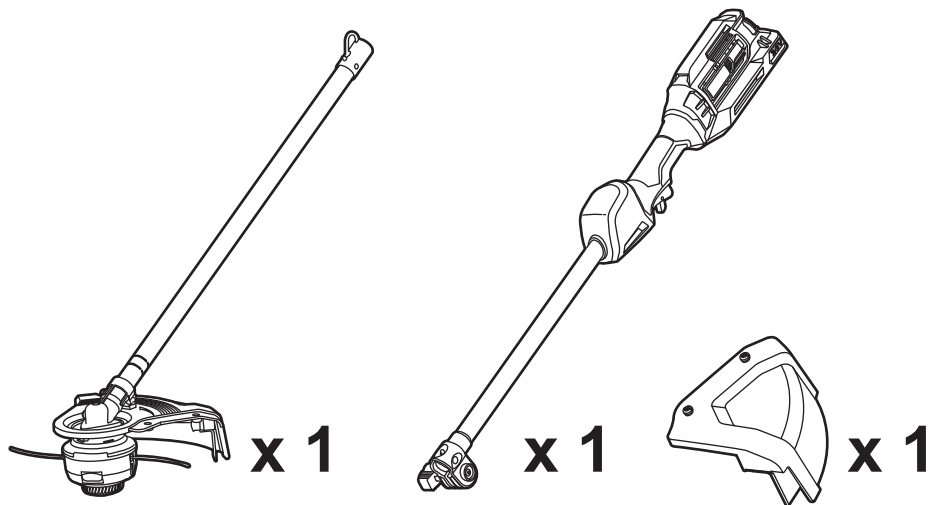
* Kit includes battery and charger.



WHAT'S IN THE BOX

RLT36BS

** Battery and charger sold separately.*

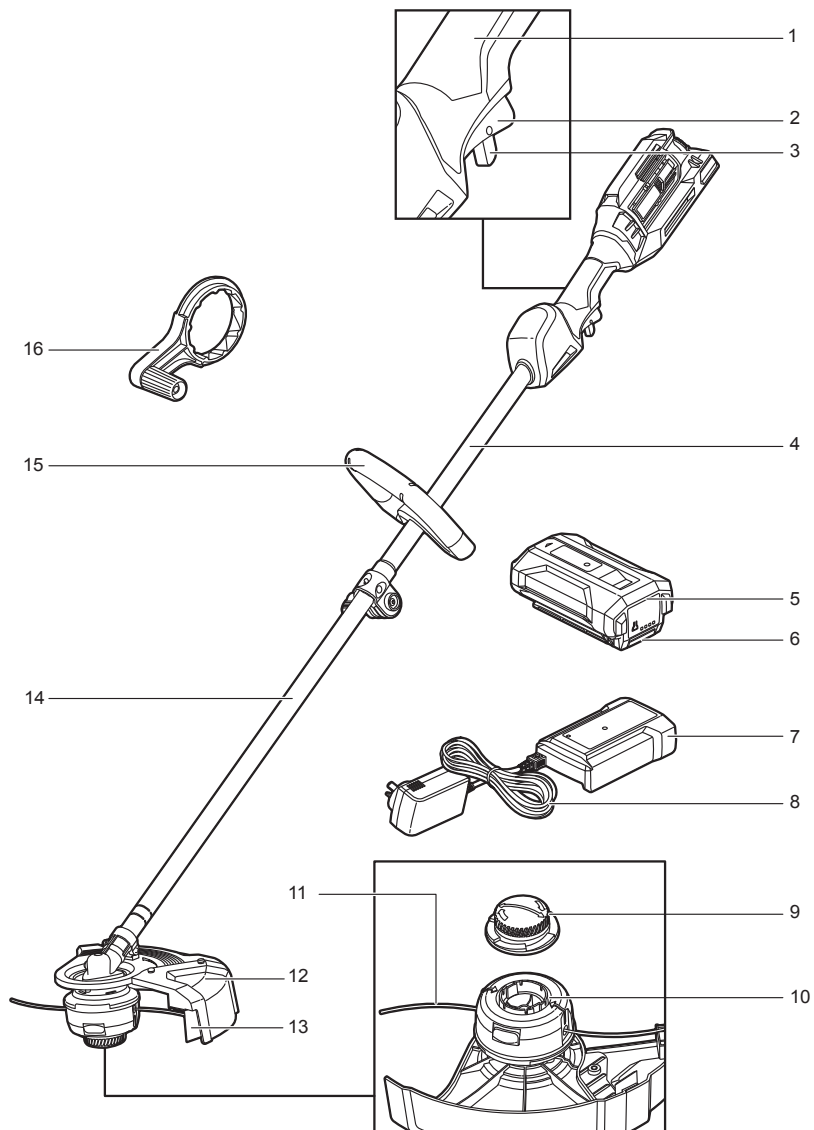


KNOW YOUR PRODUCT

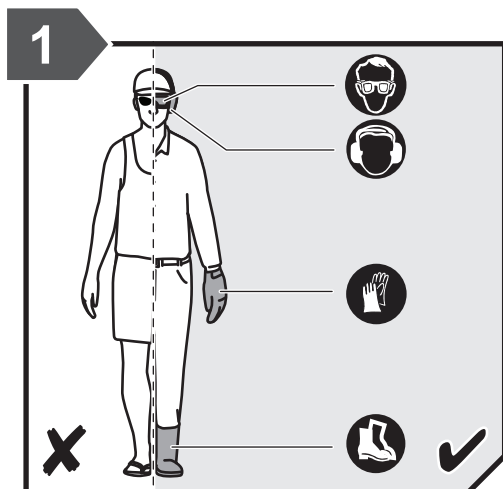
1. Rear handle
2. Variable speed trigger
3. Lock-out trigger
4. Upper shaft
5. Battery pack
6. Battery latch button

7. Charger
8. Charger power supply and cable
9. Bump knob
10. Spool
11. Cutting line
12. Grass deflector

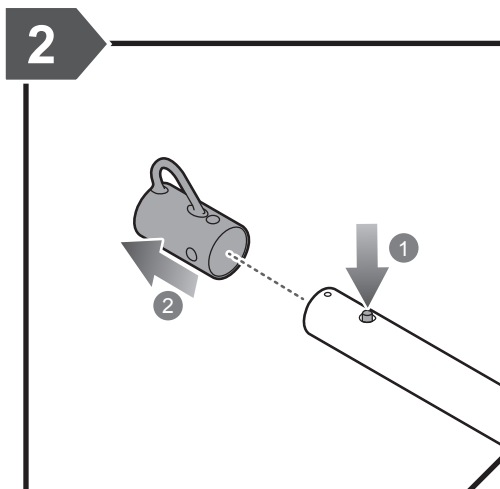
13. Line cut-off blade
14. Lower shaft
15. Front handle
16. Speed winder



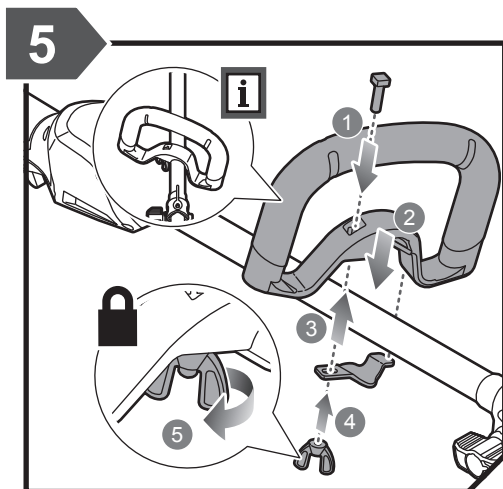
GETTING STARTED



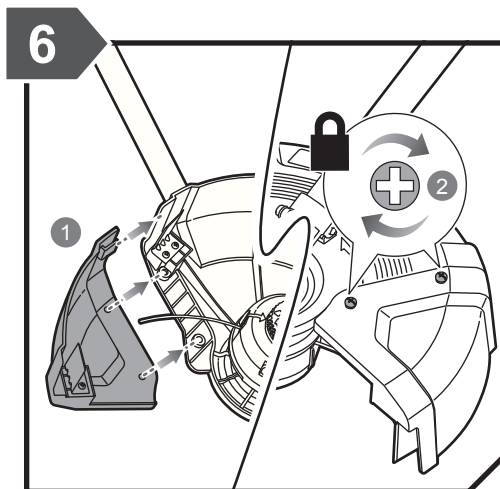
Always wear safety goggles or safety glasses with side shields when operating the product. Wear non-slip, heavy-duty protective gloves. Wear non-skid, protective footwear that will protect your feet and improve your footing on slippery surfaces.



Push the lock button, and slide out the hanger cap from the lower shaft.



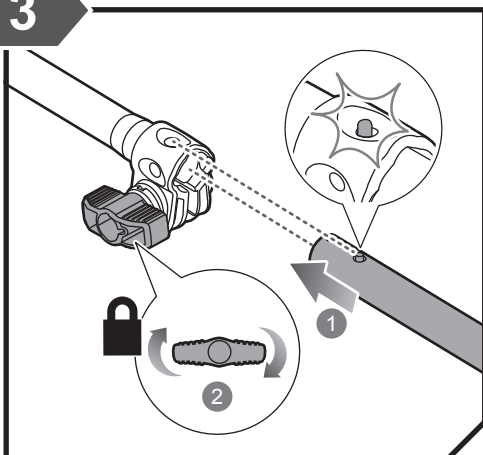
Insert the screw and tab into place to attach the front handle to the upper shaft. Tighten the wing nut to secure.



Install the small guard to the main guard. Secure the screws with a philips head screwdriver.

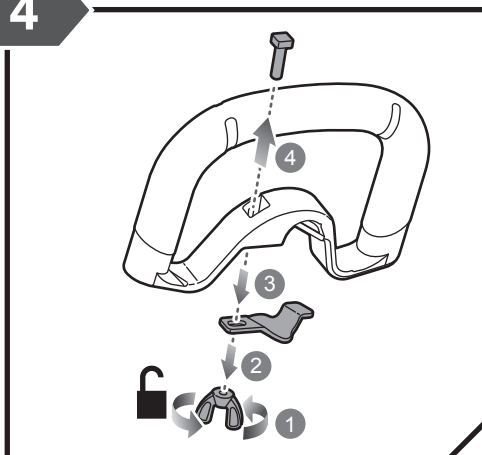
GETTING STARTED

3



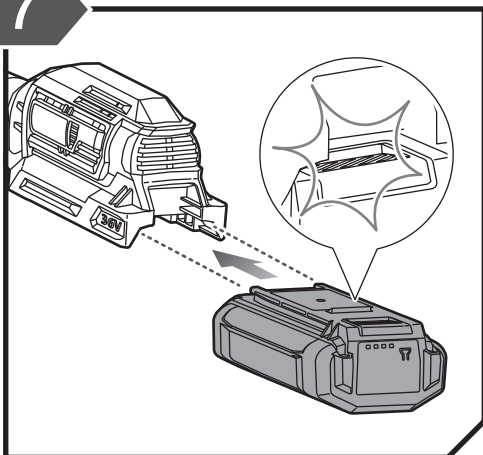
Insert the upper shaft into the lower shaft until the latches snap into place. Tighten the lower shaft knob to secure.

4



Loosen the wing nut from the front handle. Remove the tab and screw from the front handle.

7



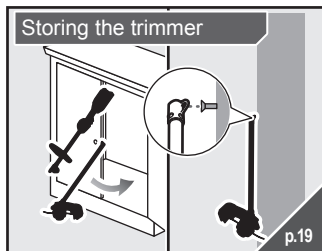
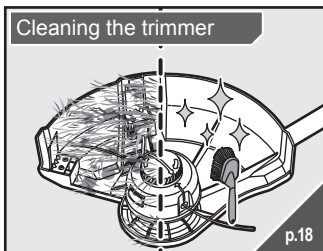
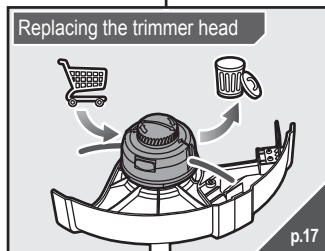
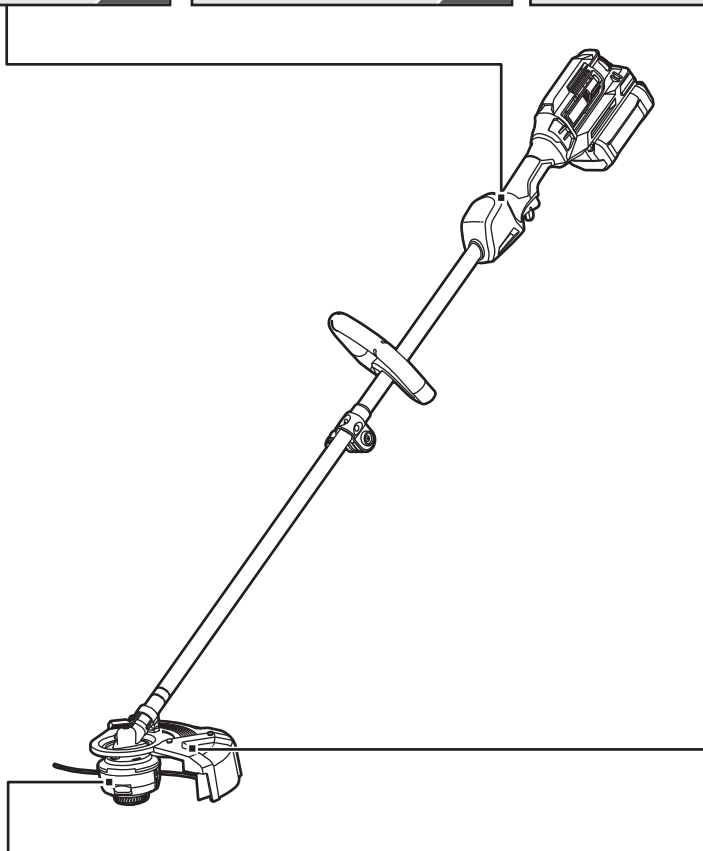
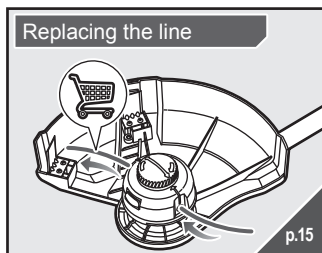
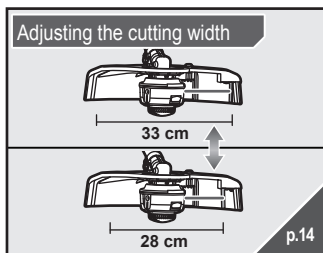
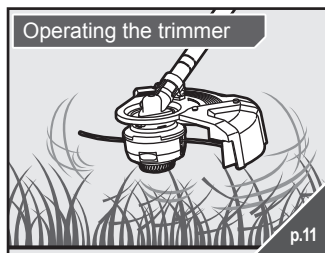
Insert the battery pack until the battery latch button clicks into place.

8

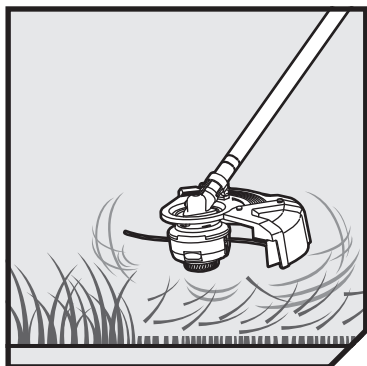


Hold the lock-out trigger, and squeeze the variable speed trigger to operate the product.

OVERVIEW



OPERATION



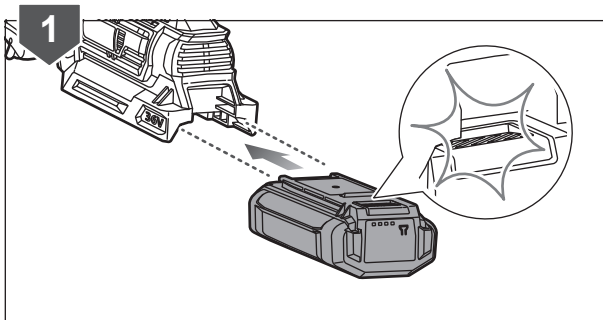
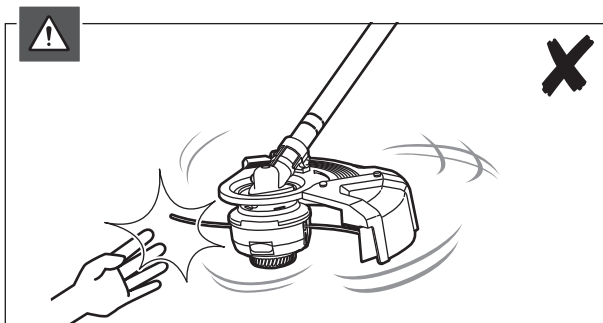
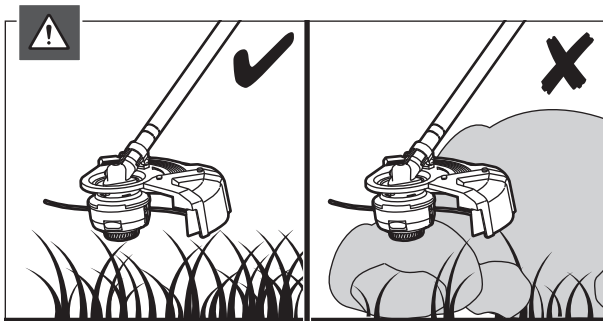
OPERATING THE TRIMMER

WARNING: Always use two hands to operate the product. Hold the product with the right hand on the rear handle and the left hand on the front handle.

WARNING: Beware of objects thrown by the cutting means. Clear debris like small stones, gravel, and other foreign objects from the work area before starting operation. Wires or string may become entangled with the cutting means.

WARNING: Exercise extreme caution when using the product. Keep hands and feet away from the cutting means.

1. Insert the battery pack until the battery latch button clicks into place.



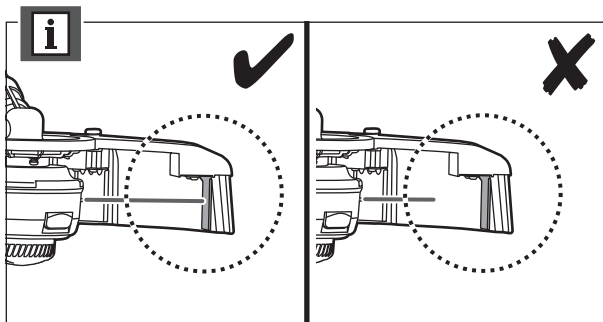
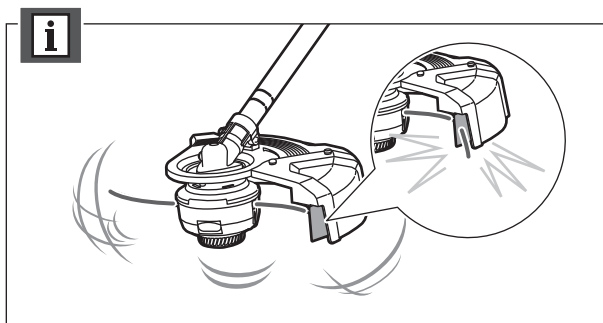
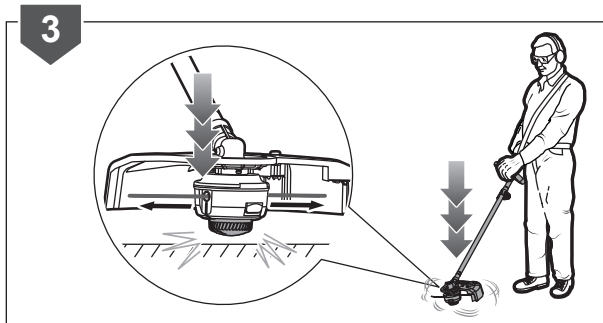
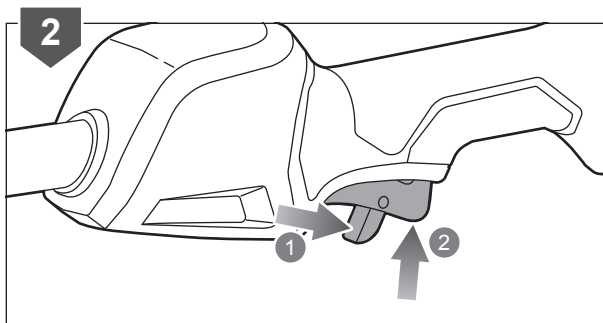
OPERATION

2. Hold the lock-out trigger, and squeeze the variable speed trigger to operate the product.
3. Tap the bump knob on the ground until the trimmer reaches its full speed. The line advances each time the bump knob is tapped. Do not hold the bump knob on the ground.

NOTE: Tap the bump knob only on the grass to prevent damage to the bump knob.

NOTE: The line cut-off blade fitted to the cutting attachment guard is designed to trim the extended line to the correct length.

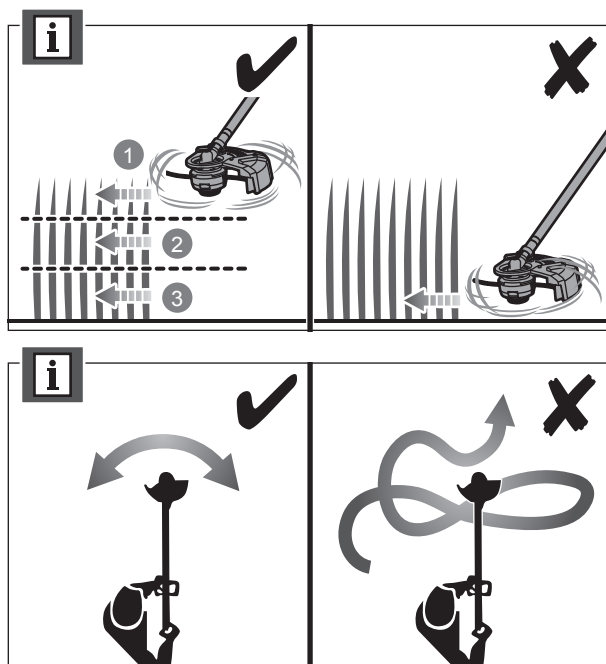
NOTE: The line cut-off blade on the grass deflector cuts the line to the correct length for safety and optimum performance.



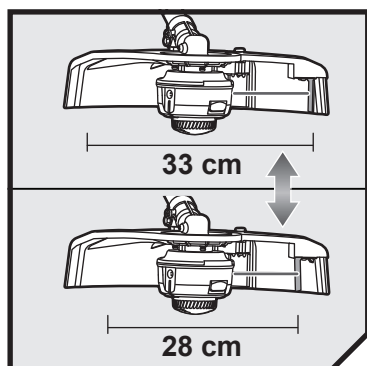
OPERATION

NOTE: Cut tall grass from the top down. This prevents grass from wrapping around the shaft housing and bump head, which may cause damage from overheating.

NOTE: For cutting ease and safety, cut the grass from the right side to the left side.



OPERATION

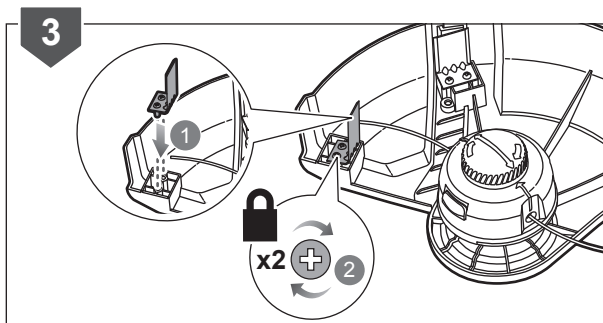
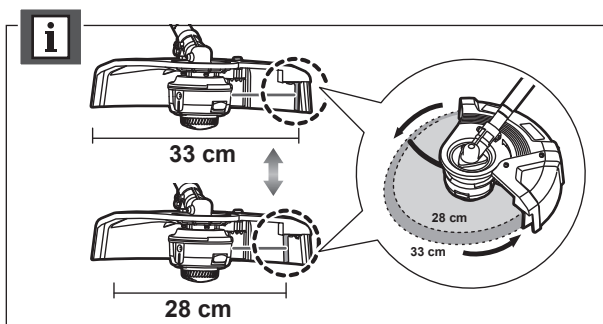
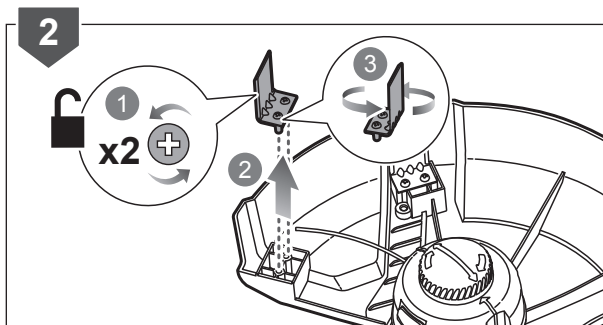
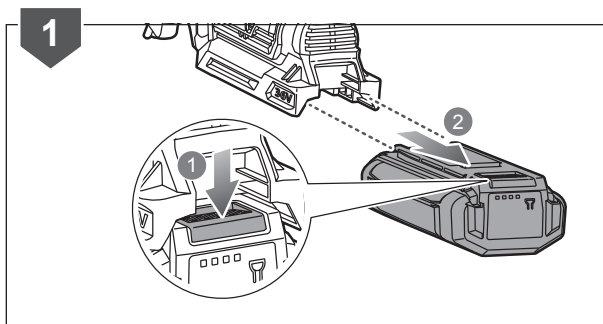


ADJUSTING THE CUTTING WIDTH

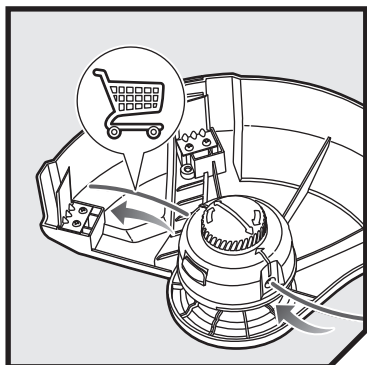
1. Remove the battery pack.
2. Loosen the screws on the line cut-off blade. Detach the line cut-off blade. Rotate the line cut-off blade 180°.

NOTE: Runtime is decreased on 11 cm setting.

3. Install the line cut-off blade into the new position. Tighten the screws to secure the line cut-off blade to the guard.



OPERATION



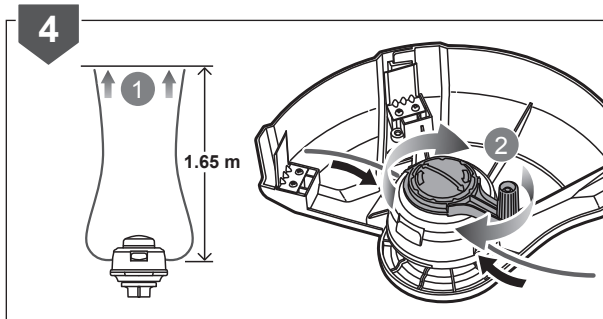
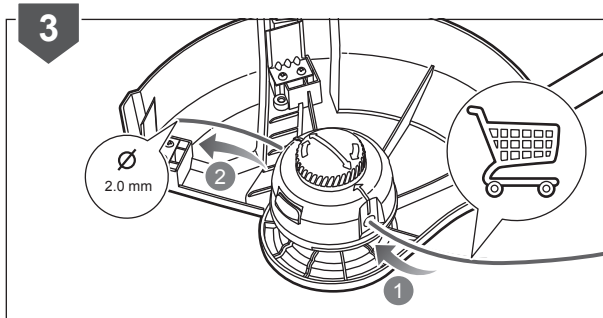
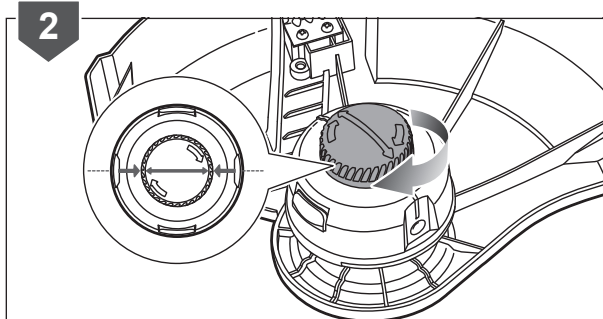
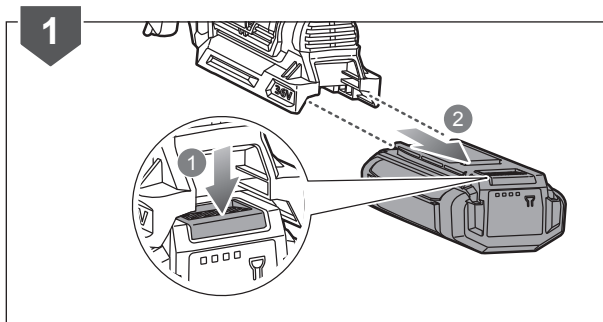
REPLACING THE LINE

1. Remove the battery pack.
2. Rotate the bump knob on the trimmer head until the line on the centre of the bump knob aligns with the arrows on the outer spool.
3. Insert one end of a 3.4 m line through the eyelet on the side of the trimmer head, and push until the line comes out through the eyelet on the other side. Continue to push the line through the trimmer head until the line is even in length on both sides.

NOTE: Use a 2.0 mm diameter line.

4. Ensure that the lines on both sides of the trimmer head have an equal length (max. 1.65 m per side). Place the speed winder on the bump knob. Rotate the bump knob with the speed winder on the trimmer head to wind the line.

NOTE: The bump knob can also be rotated by hand.



OPERATION

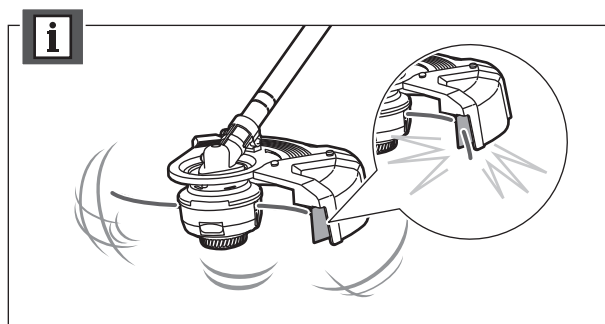
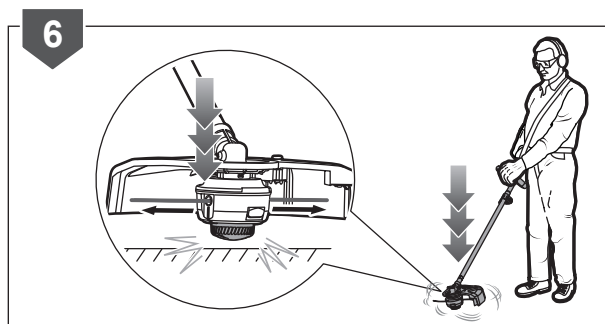
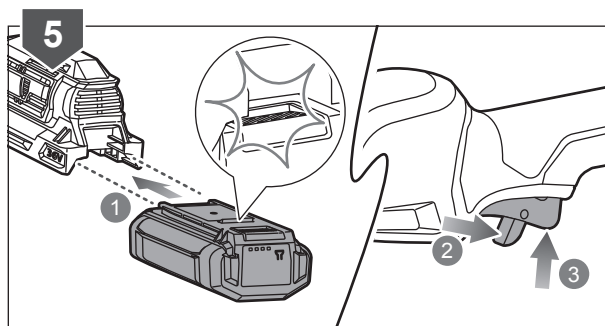
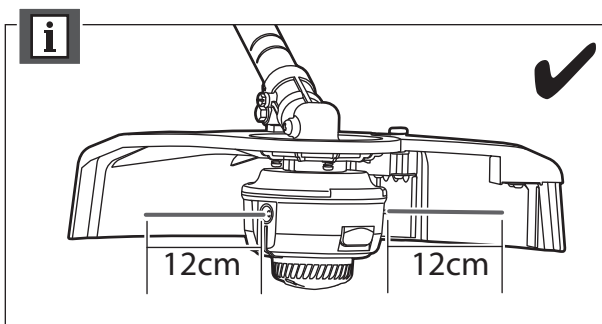
NOTE: Wind the line until approximately 12 cm of the line remains protruding from the trimmer head.

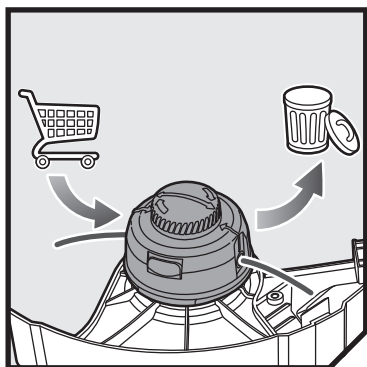
5. Insert the battery pack until the battery pack clicks into place. Hold the lock-out trigger, and squeeze the variable speed trigger to operate the product.

6. Tap the bump knob on the ground to advance the line. The line advances each time the head is tapped. Do not hold the knob on the ground.

NOTE: Tap the bump knob only onto grass. Tapping the bump knob on a hard surface can damage the head.

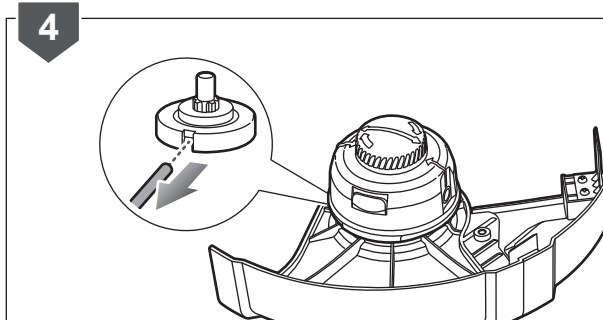
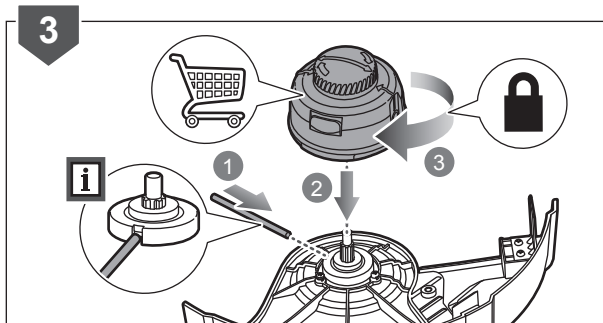
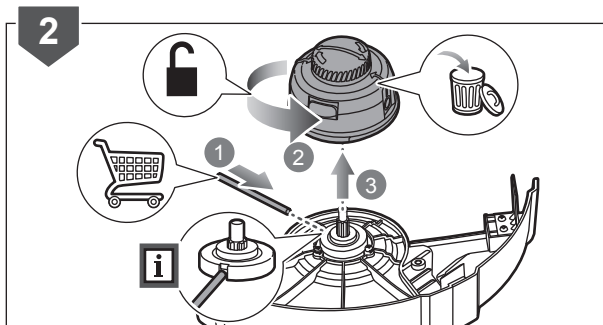
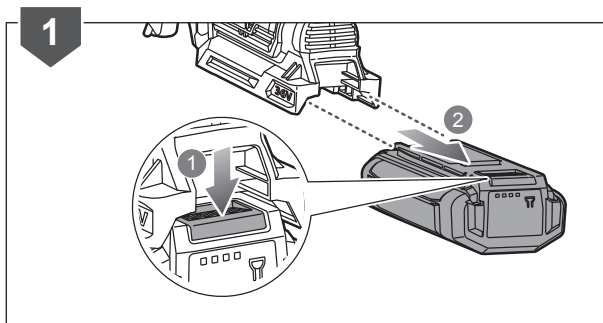
NOTE: The line cut-off blade that is fitted to the cutting attachment guard is designed to trim the new extended line.



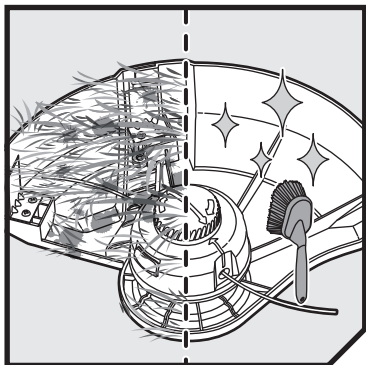


REPLACING THE TRIMMER HEAD

1. Remove the battery pack.
2. Loosen the old trimmer head. Remove the trimmer head.
3. Install the new trimmer head. Tighten the trimmer head to secure.



MAINTENANCE

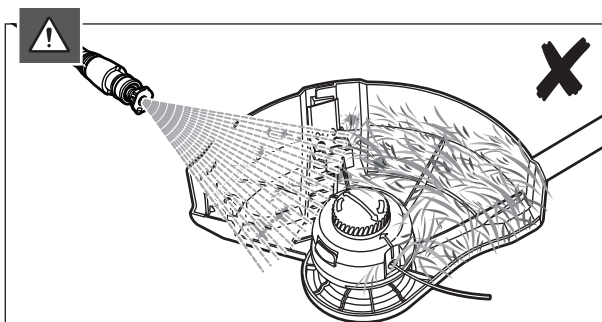
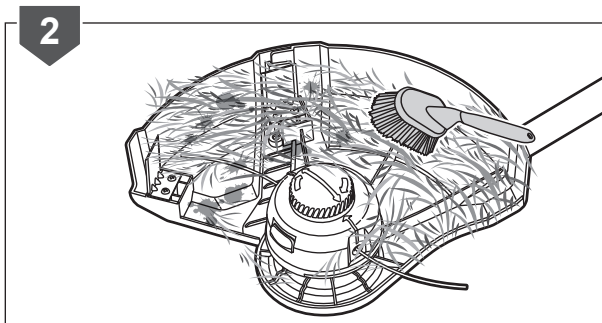
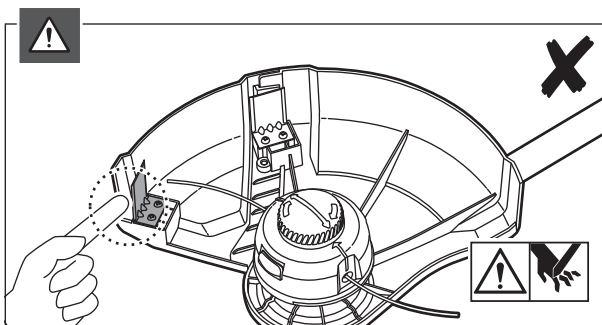
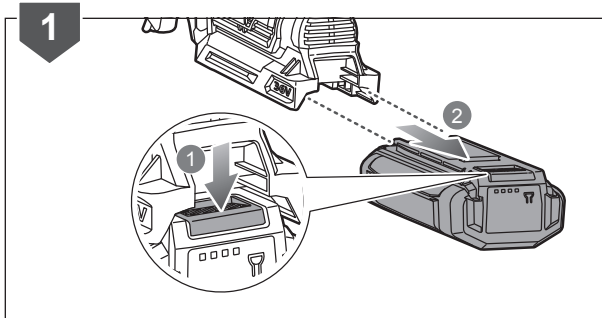


CLEANING THE TRIMMER

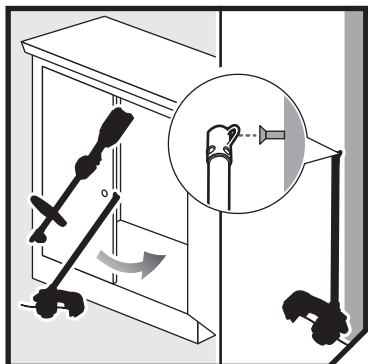
1. Remove the battery pack.
2. Clean all foreign material from the product with a soft, dry brush.

WARNING: Avoid using solvents when cleaning plastic parts. Most plastics are susceptible to damage from various types of commercial solvents and may be damaged by their use.

WARNING: The line cut-off blade that is fitted to the cutting attachment guard is very sharp. Keep hands away from the line cut-off blade at all times.



STORAGE

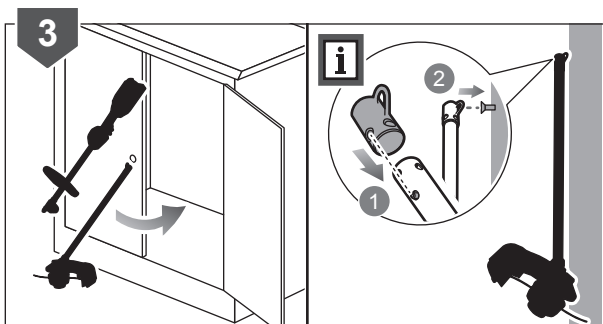
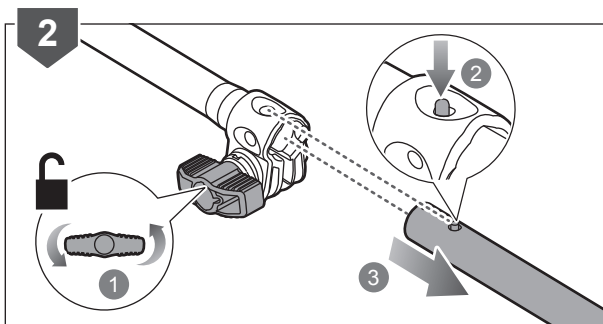
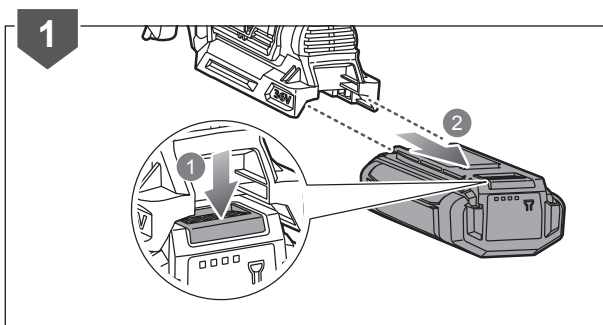
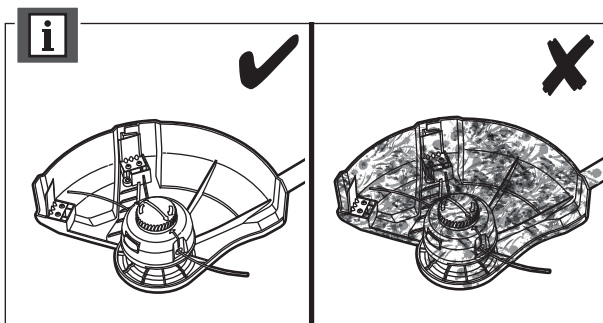


STORING THE TRIMMER

NOTE: Clean the product before storing.

1. Remove the battery pack.
2. Loosen the lower shaft knob. Push the lock button, and remove the upper shaft from the lower shaft.
3. Store the product in a cool, dry, and well-ventilated place that is inaccessible to children and away from sources of ignition. Do not store the product outdoors.

NOTE: Cover the end of the lower shaft with the hanger cap. Store the lower shaft vertically.



PRODUCT SPECIFICATIONS

Cordless Line Trimmer

Model	RLT36X20/RLT36BS
Rated voltage	36V d.c.
No-load speed	5,500/min; cut swath 330 mm 5,600/min; cut swath 280 mm
Cutting line diameter	2.0 mm
Cutting capacity	330 mm / 280 mm
Weight without battery pack	4.0 kg
Maximum weight with heaviest pack and accessory	5.5 kg

Noise emission values determined according to IEC 60335-2-91

A-weighted sound pressure level $L_{pA} = 83.1$ dB

Uncertainty $K = 2.5$ dB

A-weighted sound power level $L_{WA} = 95.3$

Uncertainty $K = 2.5$ dB

Vibration total values determined according to IEC 60335-2-91

Vibration emission value

Front handle	$a_h = 0.9$ m/s ²
Rear handle	$a_h = 1.0$ m/s ²
Uncertainty	$K = 1.5$ m/s ²

BATTERY AND CHARGER

Model	RLT36X20	RLT36BS
Battery pack	BPL3620D	-
Weight	0.85 kg	-
Charger	BCL3617S	-
Compatible battery packs	BPL3615, BPL3626, BPL3640, BPL3620D, BPL3626D, BPL3640D, BPL3650D, BPL3626D2, BPL3650D2, BPL3640D2	
Compatible charger	BCL3617S, BCL3620, BCL3620S, BCL3650F, BCL3617U, BCL3660F	

REPLACEMENT PART

Complete spool	RAC1214
Line replacement	PWFTL2015T - PWFTL2050T

VIBRATION LEVEL

The declared vibration value has been measured with a standard test method and may be used to compare one tool with another.

The declared vibration value may be used in a preliminary assessment of exposure.

The vibration emission during actual use of power tool can differ from the declared total value depending on the ways in which the tool is used.

Identify safety measures to protect yourself based on an estimation of exposure in the actual conditions of use, taking account of all parts of the operating cycle such as the times when the tool is switched off and when it is running idle in addition to the trigger time.





*RYOBI is a trademark of Ryobi Limited,
and is used under license.*

Imported by:

Techtronic Industries Australia Pty Ltd
31 Gilby Road, Mount Waverley, VIC 3149,
Melbourne, Australia

Techtronic Industries N.Z. Limited
Unit C, 70 Business Parade South,
Highbrook, Auckland 2013, New Zealand

961087084-01