

EARTHWOOL® GLASSWOOL

the feel good glasswool insulation

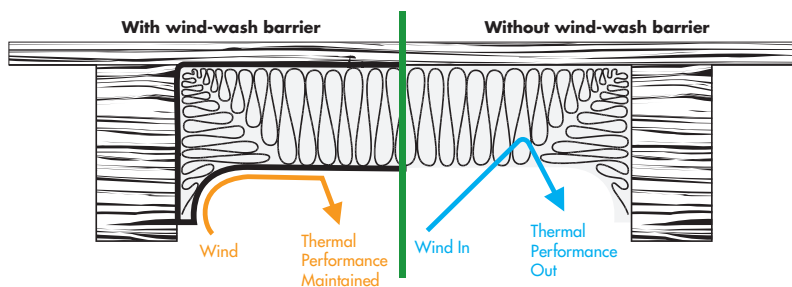
NEW UNDERFLOOR INSULATION WITH “WIND-WASH BARRIER”

DESIGNED TO
PERFORM IN
UNDER FLOORS
WITHOUT A
FULLY ENCLOSED
PERIMETER

DRAUGHTS OUT COMFORT IN

- A laminated wind-wash barrier to maintain thermal performance - R1.8
 - Protection from the negative effects of air movement under your floor
 - NZS 4246 and RTA compliant

- Can be stapled in place
- Super-soft insulation
- Improved thermal performance - cooler home in summer and warmer home in winter
- Lower energy bills
- Non-combustible and does not react with electrical wiring.



This insulation will contribute to meeting the compliance requirements of the Residential Tenancies Act.

KNAUFINSULATION



Insulating under the floors is now easier as Earthwool® glasswool: Underfloor roll with a wind-wash barrier can be directly fixed in place. Once installed, the insulation will improve the thermal comfort of your home and can contribute to lower energy bills.

INSTALL INSTRUCTIONS

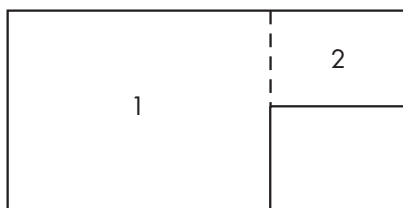
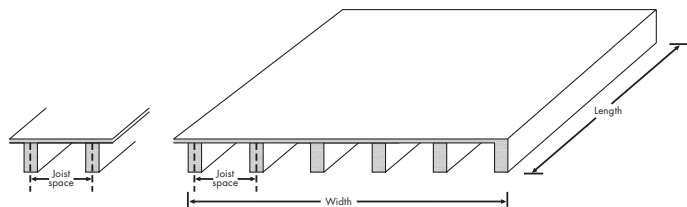
Installing new Earthwool® glasswool: Underfloor roll with wind-wash barrier can be done in 'four' simple steps. See our guide below to see what you need to get the job done and for more detailed install instructions please refer to the product packaging and our website before installing the insulation.

1. Measure up

To determine how many packs of insulation you need, complete the following calculation or use our quick guide below

Calculation

Floor width ÷ joist spacing
x floor length ÷ 20 = round up
to get the estimated number of packs required.



For irregular shapes break the floor into sections, complete the calculation for each section and add the sections together.

2. Quick guide – calculate the number of packs required

Please refer to the table below to see how many packs you need

Quick guide

Average number of packs needed					
Product dimensions	Joist spacing (mm)	Area (m²)			
		75	100	125	150
75x500x10000	450	9	12	14	17
75x600x10000	600	7	9	11	13

The number of packs are provided as an approximate calculation and should be used as guidance only.



3. Tools required to install Underfloor roll

You will require the following:

Tools: Tape measure, staple gun, sharp knife



Safety equipment: Eye protection, face mask, gloves, long sleeve top, full length trousers, flat shoes, cap

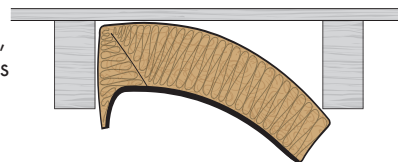


4. Installation steps

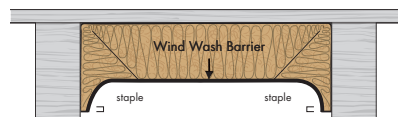
a. Cut rolls to size



b. Friction fit between joists, with turndowns on each side



c. Staple into place



DO NOT START WORK UNTIL THE SITE IS SAFE!

Prior to installation complete an evaluation of the underfloor considering access, joist spacings and any obstructions that may present a safety issue. Installation must be completed to the requirements of relevant standard: AS 3999 or NZS 4246. When insulating the floor, care should be taken to ensure that sub-floor ventilation is maintained according to AS/NZS 1860 or, heed the recommendations of particleboard/timber flooring suppliers.

Do not use metal staples, or staples made from conductive material to install under floor insulation. Installing underfloor insulation can be hazardous due to the working environment and electrical cables.

For more information visit www.knaufinsulation.co.nz