



USE, CARE AND INSTALLATION INSTRUCTIONS FOR YOUR NEW CANNON WOOD HEATER

Cannon®

JARRAH

INSTALLER:

Please ensure these instructions remain with the owner.

Prior to operating your brand new wood heater thoroughly read and understand these instructions.

WARNING:

Improper installation, adjustment, alteration, service or maintenance can cause injury or property damage. Refer to this manual. For assistance or additional information consult an authorized installer, or the Cannon distributor.

Installation and product maintenance must be performed by an authorized installer or service agent.



Model 80300

Cannon Jarrah Wood Heater

Please leave instruction manual with the owner

Distributor

This appliance is distributed by:



Tel: 1300 727 421



CONTENTS

PAGE

SPECIFICATIONS

3

SAFETY WARNINGS

4-5

INSTALLATION INSTRUCTIONS

6

CLEARANCE

7-9

FIRE BRICKS INSTALLATION

10

USING YOUR HEATER

11-13

CARE AND MAINTENANCE

14

WARRANTY

15-16

SPECIFICATIONS

**Heating Capacity:**

Up to 22 squares (205 m²)

Heat Output: 13.7kW

Heating Efficiency: Up to 72%

Particulate Emissions:

Up to 0.7g/kg

Overall Dimensions:

(H) 843mm x (W) 710mm x (D) 638mm
(does not include handle)

Fire Box Dimensions:

(H)300-356mm x (W)483mm x (D)375mm

Fan Assist: 3 Speed

Unit Net Weight: 190kg

Flue Diameter :

- Inner flue stainless steel 152mm diameter.
- 200mm diameter outer flue coated galvanized 180 degree perforated with solid back or solid triple skin flue kit

Flue Spigot :

- Distance from rear of appliance to centre line of flue spigot – 194mm.
- Distance from rear of top plate to centre line of flue spigot – 219mm.
- Distance from side of appliance to centre line of flue spigot – 354mm.

Inner Flue :

- Must terminate at least 4.6m above the base of heater.

CAUTIONS: READ THIS FIRST

FOR YOUR SAFETY

Your Cannon wood heater has been designed and tested to rigorous Australian Standards, and will provide you with beautiful, environmentally sustainable home heating for many years. However, we must remember that these appliances have high heat output, and need to be both installed correctly and operated with care.

WHAT TO BURN

Burn only dry, seasoned hardwood in these heaters. Do not use flammable liquids or spray aerosols to help start the fire, or at any time the fire is operating.

Do not burn the following:

- Treated timbers (e.g. treated pine or painted fence palings) as these will emit poisonous chemicals.
- Household refuse.
- Coal or briquettes.
- Combustible building materials as these materials either emit hazardous chemicals or will cause a dangerous build up of soot and creosote in your flue, which may cause a dangerous flue fire.

WHAT TO KEEP AWAY FROM THE HEATER

WARNING: Do not store or use petrol, kerosene, methylated spirits or other flammable liquids in the vicinity of this appliance (ie. within installation clearances).

WARNING: Keep all combustible material, including curtains, furniture, wood, paper and matches, away from the heater. Observe the clearances in the installation section.

Children and adults should be alerted to the hazard of high surface temperatures and should take care to avoid burns or clothing ignition.

Supervise young children to ensure they do not play with the appliance. Keep children away from the heater when it is alight. For young children, a secondary guard or fire screen is recommended.

This appliance is not intended for use by persons (including children) with reduced physical, sensory or mental capabilities, or lack of experience and knowledge, unless they have been given supervision or instruction concerning use of the appliance by a person responsible for their safety.

ENSURE THE HEATER IS IN PROPER WORKING CONDITION

Do not use this heater with a cracked glass. The glass should be replaced only with genuine ceramic glass from the manufacturer. This appliance or flue must not be modified in any way without written permission from the manufacturer. Failure to observe this requirement will void the warranty, and may void household insurance.

CAUTIONS

If you have had a flue fire, have the heater and flue inspected before it is used again.

If the power supply cord is damaged, it must be replaced by the manufacturer, its service agent or a suitably qualified person in order to avoid electrical hazard.

INSTALL STRICTLY ACCORDING TO THESE INSTRUCTIONS

This heater and flue system must be installed in accordance with the latest version of AS/NZS 2918:2018, relevant building and local government regulations, using the clearances and requirements tabled in these instructions.

Your wood heater must be installed by a qualified person whose work conforms with local council regulations, Australian standards & manufacturer's recommendations. Failure to do so will void your warranty and could possibly void any home insurance.

Ensure that the electrical cable is accessible after installation. Ensure that the cable is kept away from hot parts of the heater.

Ensure that the heater is not installed in an area that is subject to "negative pressure" ie indoor air pressure that is below outside air pressure, e.g. due to installing the heater in an area without adequate external ventilation. Negative pressure will result in flue exhaust being sucked back into the room, which, if left uncorrected, can result in suffocation.

USING YOUR HEATER SAFELY

Ensure you are completely familiar with the usage section of these instructions before operating the heater.

WARNING: Always open the air control fully before opening the heater door. This will prevent a sudden rush of air into the firebox.

We recommend using fire retardant gloves when stacking wood into the firebox to prevent burns.

When stacking wood into the firebox, place the logs carefully. Prevent logs from rolling forward by placing them front to back. Do not throw logs in as this may cause embers to fly out of the firebox.

When removing ashes from the firebox, use a metal or other noncombustible container, with a tightly fitting lid and moved outdoors immediately to a location clear of combustible materials. Even seemingly cool ashes can contain small, glowing hot embers.

For safety reasons do not overload or over fire the heater, as this may cause safe temperatures to be exceeded and result in a fire hazard.

INSTALLATION

BEFORE YOU BEGIN

This heater and flue system must be installed in accordance with the latest version of AS/NZS 2918:2018, relevant building and local government regulations, using the clearances and requirements outlined in these instructions.

NOTE: You may need to obtain local government approval prior to installing a wood heater. Your wood heater must be installed by a qualified person whose work conforms with local council regulations, Australian standards & manufacturers' recommendations. Failure to do so will void your warranty and could possibly void any home insurance.

WARNING:

THE APPLIANCE AND FLUE-SYSTEM SHALL BE INSTALLED IN ACCORDANCE WITH AS/NZS 2918-2018 AND THE APPROPRIATE REQUIREMENTS OF THE RELEVANT BUILDING CODE OR CODES.

WARNING:

APPLIANCES INSTALLED IN ACCORDANCE WITH THIS STANDARD SHALL COMPLY WITH THE REQUIREMENTS OF AS/NZS 4012/4013:2014 WHERE REQUIRED BY THE REGULATORY AUTHORITY, I.E. THE APPLIANCE SHALL BE IDENTIFIABLE BY A COMPLIANCE PLATE WITH THE MARKING 'TESTED TO AS/NZS 4012/4013:2014'.

ANY MODIFICATION OF THE APPLIANCE THAT HAS NOT BEEN APPROVED IN WRITING BY THE TESTING AUTHORITY IS CONSIDERED TO BE IN BREACH OF THE APPROVAL GRANTED FOR COMPLIANCE WITH AS/NZS 4012/4013:2014.

POSITIONING YOUR WOOD HEATER

Due to high temperatures ensure the heater can be positioned out of walkways and sufficiently far from furniture, curtains, combustible materials and flammable liquids, while still observing required clearances.

Do not place clothing or other flammable material on or near the heater.

Ensure also that where the flue penetrates through the ceiling that it is clear of joists and rafters. Refer to Australian Standards latest version of AS/NZS 2918:2018.

FLUE REQUIREMENTS

Your Cannon wood heater must be installed with an approved universal/default or triple skin flue kit available from your retailer. You must not modify the kit in any way or mix components from other kits. One of the most important factors that determine the performance of your heater is the height of the flue. A flue that is not high enough, or does not extend far enough above nearby airflow obstructions, will not allow the heater to draw air properly, and combustion will suffer as a result. Refer to Installation Flue Diagram Fig. 3 & 4 on Page 8.

INSTALLATION

Standard AS/NZS 2918:2018 requires the following as a minimum:

- The active flue (the innermost pipe for a multi skinned flue) must terminate at least 4.6m above the base of the heater.
- The active flue must terminate at least 1m from a sloping roof, and 1.5m above a flat roof.
- The flue must be higher than any airflow obstruction within a 3m radius by at least 1m.
- Where it is impractical to extend the flue above airflow obstructions (e.g. trees very close to the roof) then an approved anti downdraft cowl is advised.
- The flue should extend above any window of a neighbouring property. If performance problems remain after the flue has been extended as required, consult your Cannon distributor for further advice.

Requirement for a floor protector:

If your wood heater is to be installed on carpet, floorboards or a combustible surface, then a properly constructed floor protector made from at least 18mm of compressed cement sheet or non-combustible material **MUST** be placed under the heater, conforming to the minimum dimensions below. The floor protector must be placed on a firm level surface for the heater to rest on.

Improper installation, adjustment, alteration, service or maintenance can cause injury or property damage.

Terminating a flue in a roof space is not permitted.

DO NOT INSTALL OR USE THIS APPLIANCE IN MARINE CRAFT OR MOBILE HOMES

CLEARANCES

It is mandatory that the heater is installed sufficiently clear of combustible material. See the diagram and table below for minimum clearances for both parallel to the wall and corner installation configurations.

WARNING: Failure to observe these clearances from any combustible material (including loose firewood) may result in a fire, the damage from which may not be claimable against insurance.

INSTALLATION

These clearances apply where a universal/default flue kit (please refer to Fig. 1) are used, and triple skin flue kit (please refer to Fig. 2) consisting of:

- Within the room interior: 152mm diameter active flue and 200mm diameter coated galvanized 180° perforated front with solid back, or a solid 360° flue when using Triple skin flue kit.
- Transition to: default double skinned ceiling penetration kit, with ceiling plate or a 360° solid coated flue when using triple skin flue kit.

INSTALLATION CLEARANCE DIAGRAMS

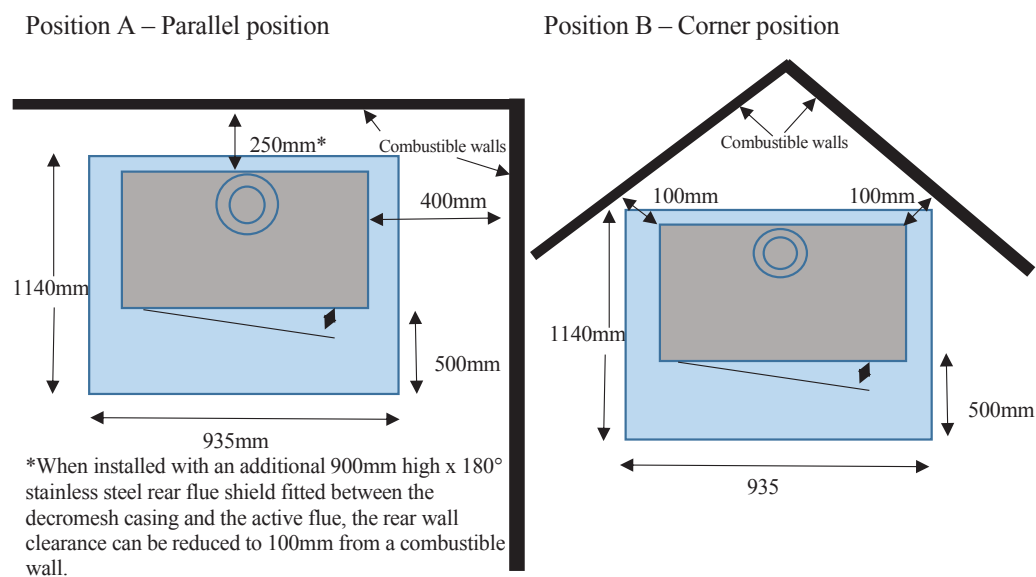


Fig. 1: Clearance Diagram - Universal/default flue kit

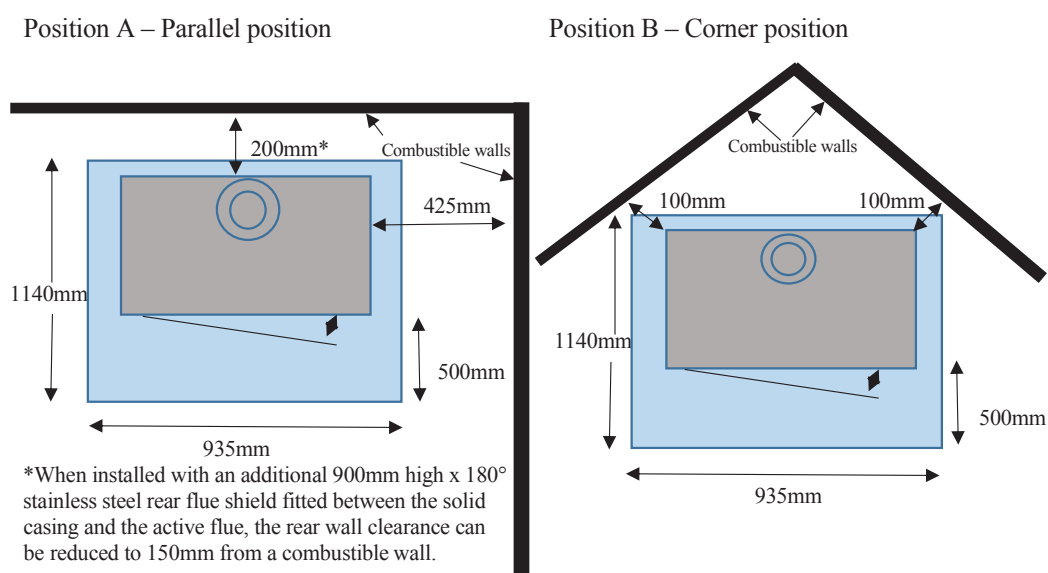


Fig. 2: Clearance Diagram - Triple Skin Flue Kit

INSTALLATION FLUE DIAGRAMS

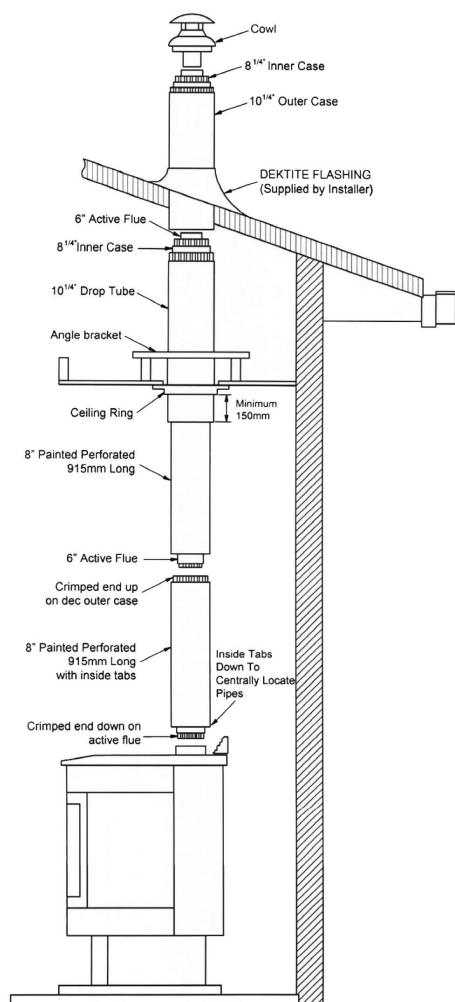


Fig. 3: Installation Diagram - Universal/Default Kit 6"-8"-10" System

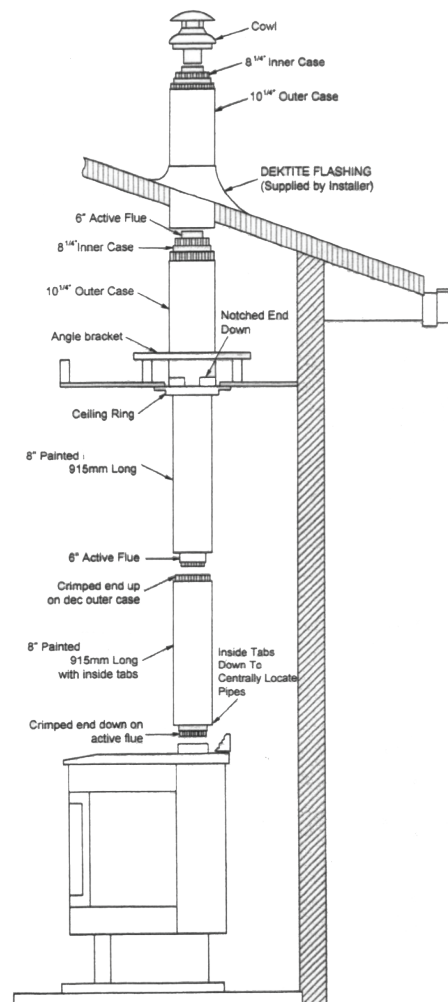


Fig. 4: Installation Diagram - Triple Skin Flue Kit 6"-8"-10" System

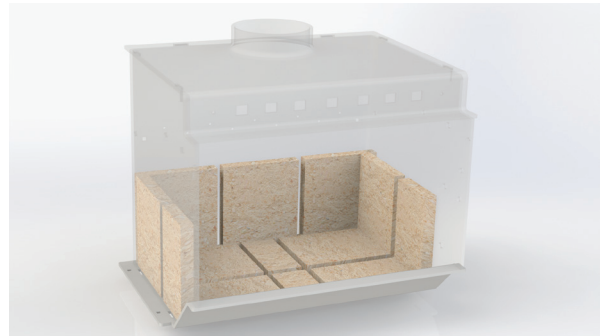
FINAL ASSEMBLY

Assembly of your Cannon wood heater is very straightforward, as most of the work has been done for you at our factory.

INSTALLATION

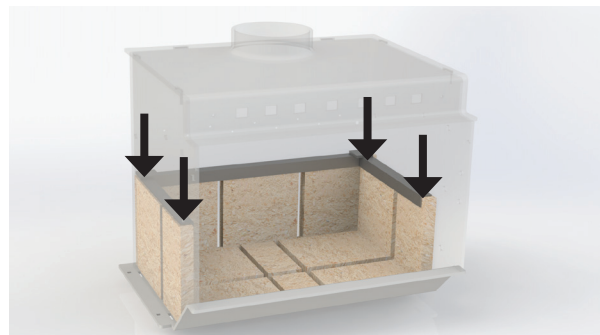
SET UP THE FIRE BRICKS

Place the bricks upright as shown in the illustration. - 3 across the back, and 2 on each side.



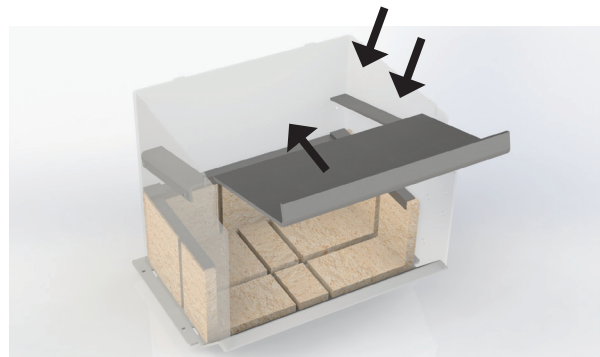
POSITION THE BRICK RETAINER

Now carefully place the steel brick retainer bracket on top of the fire bricks to keep them in place.



INSERT THE BAFFLE PLATE

Position the baffle plate as shown. Ensure it is pushed back as far as possible.



USING YOUR HEATER

WOOD SELECTION

THE IMPORTANCE OF SEASONED HARDWOOD

In our experience, there is very little difference between different types of hardwood (e.g. box gums, stringy bark etc). What is far more important is how well the wood is seasoned. When wood is first cut down, it has a very high moisture content. If the wood is cut to smaller pieces then stored in a dry, airy location for 12 months, the moisture escapes, leaving dry, quality wood fuel.

If unseasoned hardwood is burned, the moisture in the wood prevents the heater from reaching proper temperatures, resulting in more smoke, less heat, and a creosote (soot) build up in the flue.

BUYING, COLLECTING AND STORING WOOD

Buy wood from a reputable merchant that offers dry seasoned wood cut to convenient lengths. Buying unseasoned wood is a waste of money, partly because wood is sold by weight, and unseasoned wood has a high water content.

When collecting wood, ensure you collect only hardwood, and arrange for it to be stored for at least 12 months prior to use. Even seasoned wood can absorb moisture if exposed to rain. Store the wood under cover, allowing plenty of air flow between the logs. A criss-cross pattern works best.

SPLITTING THE FIREWOOD

Use a log splitter rather than an axe. Split the pieces so that you have a range of sizes:

- Very thin pieces (kindling) are excellent as fire starters.
- Moderate sized pieces 50-75mm (2-3") should be used to help encourage a fire that is starting to be established, or to re-establish a fire from embers.
- Larger logs can be used once the fire is hot and well established. Putting large logs in before the fire is hot enough will absorb too much heat and result in smoke rather than flame.

FIRST TIME USE – CURING THE PAINT

The outer panels of your heater are coated with a high temperature paint that needs to be "cured". During the first few uses, smoke will come off the heater surface – this is normal, and should cause no concern. Ensure the room is fully ventilated during this time. Do not touch the paint during this time as it may be soft and tacky.

The first firing should be a small fire only, preferably limited to kindling and small pieces of wood, and should last about 20-30 minutes. Leave the heater to cool, and fire up again with a larger fire. The paint should be cured after 3 fires.

USING YOUR HEATER

CREATING THE PERFECT FIRE

THE GOLDEN RULE

In the early stages of a fire, smaller wood pieces and more air flow is the key. Bigger pieces of wood absorb more heat before they start to burn, so they tend to lower the temperature of the firebox. This is why you should use larger logs only after the fire is already hot with a good bed of embers which can store excess heat.

BUILDING A FIRE

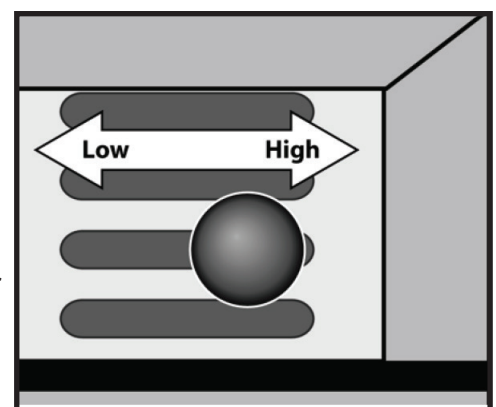
Follow this procedure to get your fire started as quickly as possible:

- Place one or two firelighters in the centre of the firebox.
- Place kindling in a criss cross pattern over the firelighters, and continue till a “tipi” or small pyramid shape is formed.
- Add a few (5-6) small pieces of wood on top of the pyramid, and a few more pieces around the edges of the firebox till the firebox is 1/4 full of fuel.
- Put the air control on high (The high position is marked on the slide control).
- Light the fire.
- Leave the door slightly ajar for a few minutes to allow maximum air flow. Do not allow the fire to be unattended while the door is ajar. This process is for fire start-up only, as unit may overheat if door is left open for too long.
- After a few minutes, place a few more pieces of wood onto the flames. For the next 10 minutes, place progressively more and larger pieces of wood onto the flames until a strong fire and a bed of embers have formed.
- After about 30 minutes from a cold start, turn the air slide control to medium.

MAINTAINING THE FIRE

Keeping a fire burning well is both pleasurable and efficient.

- The heater is designed to burn most efficiently when the slide control is on medium (half way between low and high). You should leave it on this setting except during overnight burns.
- As you add large logs, ensure the fire remains hot enough. Turn the air control to high for a few minutes to help get the firebox back up to temperature quickly. If you burn the heater too slowly or at too low a setting, your heater will not be operating as efficiently. If your glass is clean, then your flue system along with the exhaust air will also be cleaner. Ensure the heater is operated at a hot enough temperature to keep your glass clean which means you won't need to clean your flue as often.
- Place the logs front to back (ie with their ends facing the door) as they will burn better.



USING YOUR HEATER

OTHER USEFUL TIPS

OVERNIGHT BURNS

To set up for an overnight burn, ensure there is a hot bed of coals to begin. Load up with large logs, and turn the air control to high until the fire is burning strongly. Then move the air control down to low.

To restart the fire the next morning, you should rake the coals, place kindling and small wood pieces on the hottest part of the coal bed, and then slide the air control to high.

USING THE FAN

Your heater has a 3 speed fan to assist with distributing warm air through your home. You need to ensure that the fan is used when the firebox has reached full temperature; otherwise, the fan will delay the firebox reaching full temperature.

We recommend:

- Do not use the fan during startup.
- Use the fan on low or medium once the fire is fully established.
- Do not use the fan when the air slide control is on low.
- Use the fan on high when the air slide control is at maximum air flow.

REDUCING YOUR ENERGY BILL

It's in everyone's interest to reduce our energy usage, and energy costs. These simple suggestions will pay for themselves quickly:

- Ensure your home is well insulated, including thick curtains, a surprising amount of heat is lost through window glass.
- Using a ceiling fan on its winter setting is an excellent way to keep warm air down at the level where it's optimal. And during summer, the same fan on its summer setting helps drag hot air upwards, allowing cooler air to replace it.
- Close doors to parts of the house that are not being used. By keeping the heat to a smaller portion of the house, you'll stay more comfortable with less fuel.
- Dress reasonably warmly (while still being comfortable). Many people spend more on fuel than they need to by overheating their homes.



CARE AND MAINTENANCE

CLEANING

All cleaning should be done when the heater has completely cooled. This should be done at the beginning of winter and once or twice during the season, depending on heater usage. With higher usage, cleaning more often is advised. Excess ashes should be removed when necessary, placed in a non-combustible container with a tightly fitting lid and moved outdoors immediately to a location clear of combustible materials.

Painted Surfaces

These should be cleaned with a simple wipe over with a damp cloth and if necessary some mild cleansing agent. Do not use any solvents, harsh or abrasive cleansers or scourers, as these will damage the painted surfaces.

Door glass

WARNING: The door glass becomes extremely hot when the heater is operating. The heater should never be operated without the door glass. DO NOT use this heater if the glass is cracked. Contact your Cannon distributor to obtain a replacement glass.

Sometimes, especially after an overnight burn, a black deposit may appear on the inside of the door glass. This is creosote deposit from the fire burning at below its optimal temperature. Most or all of this will burn away next time the heater is fully fired. For persistent blackening, wait till the glass has completely cooled, then clean with a plastic scourer and detergent. Rinse the detergent from the glass and then dry.

Flue

To clean the flue, you will need to remove the baffle plate, and access the roof to remove the flue cowl. Use a long handled flue brush designed for this purpose to clean the creosote that has built up inside the flue. The creosote will fall into the firebox where it will be burnt on the next firing. Replace the cowl and baffle plate when done.

We recommend this be done by an authorized person ONLY.

MAINTENANCE

At the beginning of each winter season, you should check the following to ensure proper running of your heater. Any worn or cracked parts should be replaced immediately using replacement parts specified by the manufacturer.

- Door glass
- Door handle and locking mechanism
- Door hinge
- Fire bricks
- Door sealant
- Fan

You should also check that moving parts such as the door handle and air slide work correctly. If there is any stiffness in these parts, apply lubricant rated for high temperature applications as recommended by the manufacturer. Any service requests resulting from incorrect installations are not covered by our warranty terms and conditions. These calls will result in charges, usually to the end user, so please ensure that the installation and commissioning has been satisfactorily carried out before calling for any warranty service.

WOOD HEATER LIMITED WARRANTY

1. This Warranty against defects for your newly purchased Cannon product is proudly prepared by IXL Pty Ltd of 1K Marine Parade, Abbotsford, Vic 3067, phone 1300 727 421.

IXL products come with guarantees that do not exclude the following consumer entitlements under the Australian Consumer Law:

- a. replacement or refund for a major failure and compensation for any other reasonably foreseeable loss or damage; and
- b. to have the goods repaired or replaced if goods fail to be of acceptable quality and the failure does not amount to a major failure.

2. IXL warrants that your product and related supply will be free from defects in materials and workmanship during the warranty term. Your warranty term is 1 year (10 years on the Firebox), commencing from the date of purchase. IXL acknowledges this product requires professional installation and product removal is hazardous to consumers. Accordingly any necessary inspections and services will be carried out on site. You should not attempt de-installation.

3. Subject to Point 1, IXL will repair any defects in materials and workmanship during the warranty term and if the product is deemed irreparable provide a replacement of an equivalent current model where the balance of the warranty period from the original date of purchase will take effect.

4. To the fullest extent permitted by law and subject always to Point 1, IXL will not be liable for:
 - a. any loss or damage arising from loss of use, loss of profits or revenue; or
 - b. for any indirect or consequential loss or damage resulting from any breach of this warranty against defects.
 - c. Defective IXL products may be repaired using refurbished parts or if required, completely replaced by a refurbished product of the same type.

Limitations to Your Cannon Warranty

5. Subject to Point 1, this Warranty:
 - a. will only be provided to the original purchaser where the original purchase was made from a IXL Authorised Dealer or reseller and proof of such purchase can be presented at the time of service;
 - b. only applies to IXL products purchased in Australia from a IXL Authorised Dealer or reseller and installed by a qualified person where a Certificate of Compliance in accordance with State/Territory laws is provided;

WOOD HEATER LIMITED WARRANTY

- c. will not apply where the defect in or failure of the product is attributable to misuse, abuse, accident or non-observation of the manufacturer's instructions. This product must be used in accordance with the manufacturer's instructions;
- d. will not cover faults due to normal wear and tear with reasonable use nor consumable components such as globes, filters, glass items, etc;
- e. will not cover any damages or problems caused to this product by natural forces storm, fire, flood, and earthquake; or by intrusion or accumulation (or both) of foreign matters dust, soil, and moisture. IXL recommends that you take out appropriate insurances to protect your product to this end;
- f. will not apply if this product is installed in a mobile dwelling, caravan or boat;
- g. will not apply if this product is removed from the location where it was first installed;
- h. is immediately void if the serial or model number label is removed or defaced;
- i. is immediately void if the product is serviced or repaired by an unauthorised/unqualified personnel;
- j. covers use of this product for domestic use only;
- k. will not be restarted or extended upon repair or replacement of the product or a part.

How to Make a Claim Under Your Cannon Warranty

- 6. To make a claim under this Warranty you will need to:
 - a. contact IXL service department on 1300 727 421 or service@ixl.com.au to provide details and register your claim enabling a IXL assessment;
 - b. submit proof of purchase with your claim e.g. tax invoice or purchase receipt;
 - c. where a property has been constructed by a builder/developer and it is fitted with Cannon products, please submit proof of purchase by way of the certificate of occupancy, with your claim.
- 7. IXL will contact you to make arrangements for a service on site.
- 8. Subject to Point 1, you will be responsible for any costs relating to the provision of your product to a IXL Authorised Service Dealer.
- 9. Subject to Point 1, in the event you live more than 50km away from a IXL Authorised Service Dealer you may be subject to travel or transport costs to facilitate the repairing or replacement of your Cannon product.
- 10. IXL and its Authorised Service Dealers reserve the right to seek reimbursement of any costs incurred by them should your Cannon product be found to be in good working order.

Privacy

The privacy of your personal information has always been important to us. To learn more about how to protect your privacy, please visit our website at www.cannonappliances.com.au or by contacting us via email on service@ixl.com.au or by telephone on 1300 727 421

Cannon®

JARRAH

Don't Risk Your Appliance Warranty

Only a licensed person will give you a compliance certificate, showing that the work complies with all relevant standards. And only a licensed person will have insurance protecting their workmanship for 6 years. So make sure you use a licensed person to install this appliance and ask for your compliance certificate to ensure the manufacturers appliance warranty will be honored.

Date Installed _____

Compliance Certificate No: _____

Installed by: _____

Whilst every effort is made to provide current information at the time this manual was produced, continuing product improvements mean the enclosed specifications, images and literature may differ from what is currently available.



Cannon Jarrah is distributed by:



The Home of Premium Brands

1K Marine Parade, Abbotsford VIC 3067

T 1300 727 421

E orders@ixl.com.au

W cannonappliances.com.au

Model 80300

Cannon Jarrah Wood Heater