

RYOBI®

RCV36

ORIGINAL INSTRUCTIONS

Cordless Cultivator



IMPORTANT!

It is essential that you read the instructions in this manual before assembling, operating, and maintaining the product.
Subject to technical modification.

Safety, performance, and dependability have been given top priority in the design of your cordless cultivator.

INTENDED USE

The product is intended only for outdoor use by a standing operator walking with the product. For safety reasons, the product must be adequately controlled by using two-handed operation at all times.

The product is designed for cultivating or loosening soil in an open domestic garden area. The maximum working depth of the product is 19.7 cm deep and 25.4 cm wide.

The product should be used only as described in this manual. Do not use the product for any other purpose.

GENERAL SAFETY WARNINGS

⚠ WARNING! When using the product, the safety rules must be followed. For your own safety and that of bystanders, read these instructions before operating the product. Keep the instructions safe for later use.

TRAINING

- Read the instructions carefully. Be familiar with the controls and the correct use of the product.
- Never allow children, persons with reduced physical, sensory or mental capabilities, lack of experience and knowledge, or people unfamiliar with these instructions to use the product. Local regulations may restrict the age of the operator.
- Keep in mind that the operator or user is responsible for accidents or hazards occurring to other people or their property.
- Keep bystanders, children, and pets 15 m away from the area of operation. Turn off the product if anyone enters the area.

- Never use the product while tired, ill, or under the influence of alcohol, drugs, or medication.

PREPARATION

- Some regions have regulations that restrict the use of the product to some operations. Check with your local authority for advice.
- Wear full eye and hearing protection while operating the product.
- Hearing protection may restrict the operator's ability to hear warning sounds, pay particular attention to potential hazards around and inside the working area.
- Wear heavy, long trousers, boots, and gloves. Do not wear loose-fitting clothing, short trousers, or jewellery of any kind. Do not use the product with bare feet.
- Secure long hair so it is above shoulder level to prevent entanglement in moving parts.
- Before use and after any impact, check that there are no damaged parts. A defective switch or any part that is damaged or worn should be properly repaired or replaced by an authorised service facility.
- Make sure that the cultivator attachment is properly installed and securely fastened.
- Before using, always visually inspect to see that the blade, blade bolts, and cutter assembly are not worn or damaged. Replace worn or damaged blade and bolts in sets to preserve balance.
- Never operate the product unless all guards, defectors, and handles are properly and securely attached.
- Consider the environment in which you are working. Keep the working area free from wires, sticks, stones, and debris, which if struck by the cutter, can become thrown objects.
- Check the tines before each use. Replace the tine assemblies with new ones when necessary. Worn tines invite poor performance and overload of the motor.

BATTERY TOOL USE AND CARE

- Recharge only with the charger specified by the manufacturer. A charger that is suitable for one type of battery pack may create a risk of fire when used with another battery pack.
- Use power tools only with specifically designated battery packs. Use of any other battery packs may create a risk of injury and fire.
- When battery pack is not in use, keep it away from other metal objects, like paper clips, coins, keys, nails, screws, or other small metal objects, that can make a connection from one terminal to another. Shorting the battery terminals together may cause burns or a fire.
- Under abusive conditions, liquid may be ejected from the battery; avoid contact. If contact accidentally occurs, flush with water. If liquid contacts eyes, additionally seek medical help. Liquid ejected from the battery may cause irritation or burns.

CULTIVATOR SAFETY WARNINGS

- Wear a face filter in dusty conditions to reduce the risk of injury associated with the inhalation of dust.
- Use the product across the face of slopes, never up and down. Exercise extreme caution when changing direction on slopes.
- Exercise extreme caution when reversing or pulling the product towards you.
- Never pick up or carry the product while the motor is running.
- Do not operate the product near underground electric cables, telephone lines, pipes, or hoses.
- Do not use the product on rocky surfaces.
- Use the product only in daylight or good artificial light.
- Keep proper footing and balance at all times, especially on slopes.
- Do not walk backwards when using the product.
- Walk, never run with the product.
- Do not use the product near drop-offs, ditches, excessively steep slopes, or embankments. Poor footing could cause a slip-and-fall accident.
- Exercise extreme caution when working on difficult soil. If the soil is very hard, water a few days before cultivation.
- Avoid working the soil when soggy or wet. Wait a day or two after heavy rain for the ground to dry.
- Keep hands and feet away from the rotating tines at all times and especially when turning on the motor or when the engine is running.
- Beware of objects thrown by the rotating tines. Clear debris like small stones, gravel, and other foreign objects from the work area before starting operation. Wires or string may become entangled with the rotating tines.
- Beware; the tines continue to rotate after the motor is turned off.
- Turn off the product and make sure that all moving parts have come to a complete stop:
 - before servicing
 - before leaving the product unattended
 - before cleaning the product or clearing a blockage
 - before changing accessories
 - before checking for any damage after hitting an object
 - before checking for any damage if the product starts to vibrate abnormally
 - before performing maintenance
- Always ensure that ventilation openings are kept clear of debris.
- Make sure that all the protective devices are fitted and in good condition.
- Do not modify the product in any way as this may increase the risk of injury to yourself or others.
- Injuries may be caused or aggravated by prolonged use of a tool. When using any tool for prolonged periods, ensure to take regular breaks.

⚠ CAUTION: The product may bounce upward or jump forward if the tines strike extremely hard packed soil, frozen ground, or buried obstacles, such as large stones, roots, and stumps.

⚠ CAUTION: Before moving the product from one area to another, turn off the product, and wait for the tines to come to a complete stop. Be careful not to let the tines touch the ground while moving the product. The tines, as well as the product itself, may be damaged even if the product is turned off.

OPERATING TIPS

- To reduce the risk of injury from contact with the moving parts or from thrown objects, the operator must stand behind the handlebar. Never stand to the side or in front of the handlebars while the product is in operation.
- Always wear eye protection. Always wear non-slip safety footwear when operating the product.
- While the product will cut and help clear underground vegetation and roots, the tines could become tangled in heavy vegetation or stubble above ground. Clear the area to be cultivated with a brushcutter or other similar means, and prepare the ground by removing any large debris, such as stones, bricks, and metal poles from the surface.
- Keeping hands and feet away from the tines, start the motor with the tines slightly above the ground surface. While securely holding the handlebars, lower the tines onto the ground. The product may try to pull itself forward at this point depending upon the hardness of the ground. Resist the pull of the product to go forward, and the tines should start to bury themselves into the ground. If they do not, use a reverse-and-forward (about 20 cm is sufficient) motion or a slight rocking up-and-down motion of the handlebar to assist the tines to get to their working depth.
- Once the tines are in the ground to the depth required, slowly move the product forward, letting the motor do the work. If the tines strike an object that is too hard

to move or cut, the product may raise its height as the tines try to pass over the obstruction. Turn off the product, and allow the tines to cease all movement before attempting to investigate or remove the obstruction.

- If the ground to be cultivated is hard or dry, water the ground, but do not soak it completely. Allow time for the water to penetrate the ground and for the excess water to drain away before attempting to cultivate.

ADDITIONAL BATTERY SAFETY WARNINGS

To reduce the risk of fire, personal injury, and product damage due to a short circuit, never immerse your tool, battery pack, or charger in fluid, or allow a fluid to flow inside them. Corrosive or conductive fluids, such as seawater, certain industrial chemicals, and bleach or bleach-containing products, etc., can cause a short circuit.

TRANSPORTATION AND STORAGE

- Turn off the product and make sure that all moving parts have come to a complete stop. Allow the product to cool down before storing or transporting.
- Clean all foreign materials from the product. Store the product in a cool, dry, and well-ventilated place that is inaccessible to children. Keep the product away from corrosive agents such as garden chemicals and de-icing salts. Do not store the product outdoors.
- Wipe the tines with oil or spray them with silicone lubricant to prevent rusting. Beware of sharp or damaged edges on tines.
- Oil all visible moving parts. Do not remove the motor cover.
- For transportation in a vehicle, secure the product against movement or falling to prevent injury to persons or damage to the product.

TRANSPORTING LITHIUM BATTERIES

Transport the battery pack in accordance with local and national provisions and regulations. Follow all special requirements on packaging and labelling when transporting batteries by a third party. Ensure that no batteries can come in contact with other batteries or conductive materials while in transport by protecting exposed connectors with insulating, non-conductive caps or tape. Do not transport battery packs that are cracked or leaking. Check with the forwarding company for further advice.

MAINTENANCE

⚠ WARNING! Use only original manufacturer's replacement parts, accessories, and attachments. Failure to do so can cause possible injury, can contribute to poor performance, and may void your warranty.

⚠ WARNING! Servicing requires extreme care and knowledge and should be performed only by a qualified service technician. Have the product serviced only by an authorised service centre. When servicing, use only original replacement parts.

⚠ WARNING! Before inspecting, cleaning, or servicing the product, turn off the product, and wait for all moving parts to stop. Failure to follow these instructions can result in serious personal injury or property damage.

⚠ WARNING! Do not, at any time, let brake fluids, gasoline, petroleum-based products, or penetrating oils come in contact with plastic parts. They contain chemicals that can damage, weaken, or destroy plastic.

⚠ WARNING! The tines are sharp. Use caution and wear heavy-duty gloves when fitting, replacing, cleaning, or checking bolt security.

- You may make adjustments or repairs described in this manual. For other repairs, contact the authorised service centre.
- Avoid using solvents when cleaning plastic parts. Most plastics are susceptible to damage from various types of commercial solvents and may be damaged by their use. Use clean cloths to remove dirt, dust, oil, or grease.

- After each use, clean the body and handles of the product with a soft, dry cloth, and clean the debris from the tines with a stiff brush.
- Check all nuts, bolts, and screws at frequent intervals for proper tightness to ensure that the product is in safe working condition.
- Only the parts shown on the replacement part list are intended to be repaired or replaced by the customer.

WHAT'S IN THE BOX

See page 7.

- Cultivator x 1
- Power head x 1
- Top clamp x 1
- "J" handle x 1
- Metal cover x 1
- Operator's manual x 1
- Flat washer x 2
- Hitch pin x 2
- Nut x 4
- Bolt x 4
- Outer tine D x 1
- Inner tine C x 1
- Inner tine B x 1
- Outer tine A x 1

SYMBOLS ON THE PRODUCT



Safety alert



Beware of thrown or flying objects. Keep all bystanders, especially children and pets, at least 15 m away from the operating area.



Read and understand all instructions before operating the product. Follow all warnings and safety instructions.



Wear eye protection.



Wear hearing protection.



Remove the battery pack before starting any work on the product.



Guaranteed sound power level



Keep feet and hands away from rotating tines.



Waste electrical products should not be disposed of with household waste. Please recycle where facilities exist. Check with your local authority or retailer for recycling advice.

SYMBOLS IN THIS MANUAL



Parts or accessories sold separately

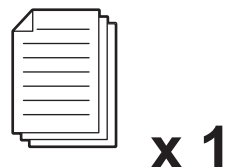
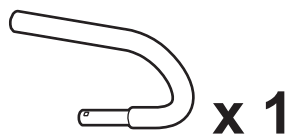
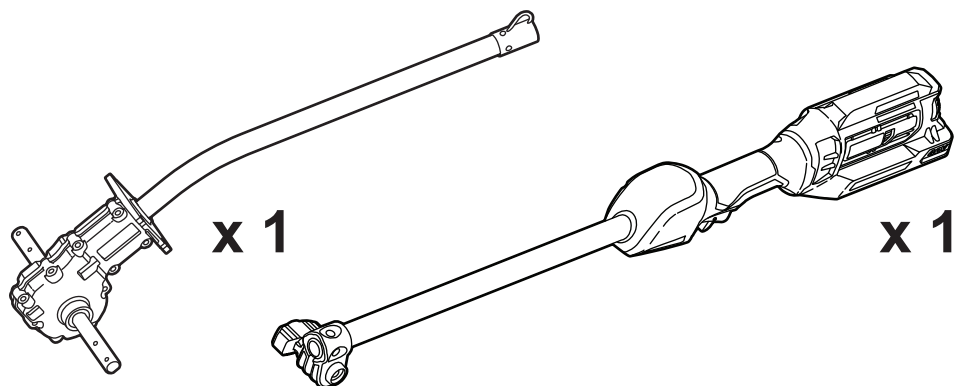


Note



Warning

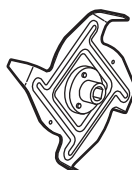
WHAT'S IN THE BOX



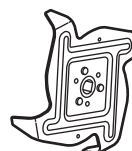
D



C

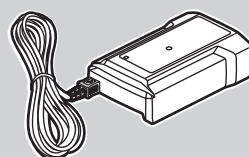
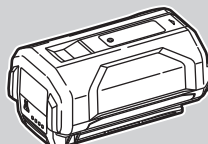
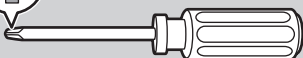


B



A

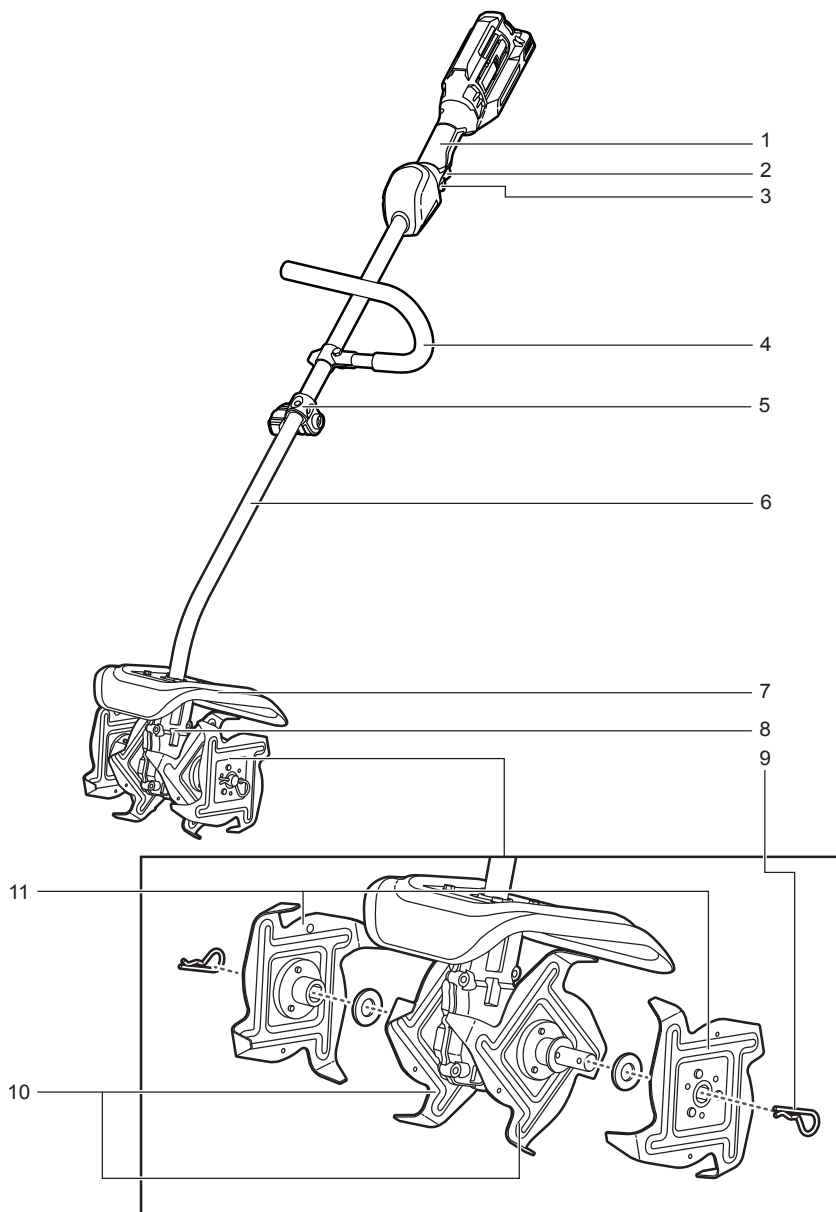
x 1



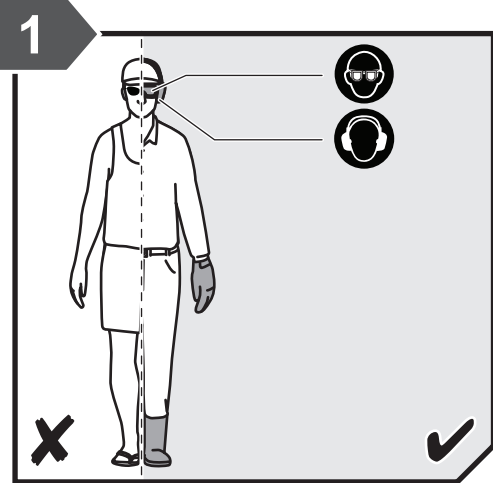
KNOW YOUR PRODUCT

1. Handle
2. Switch trigger
3. Trigger lock out
4. J handle
5. Coupler
6. Cultivator shaft

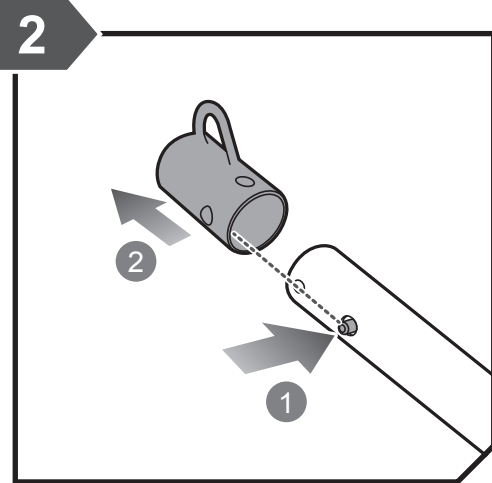
7. Metal cover
8. Gear box
9. Hitch pin
10. Inner tine
11. Outer tine



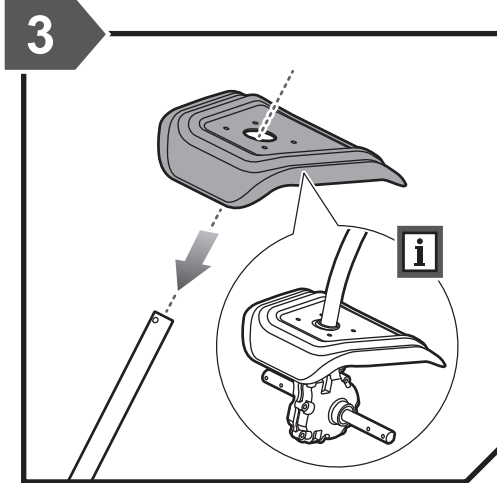
GETTING STARTED



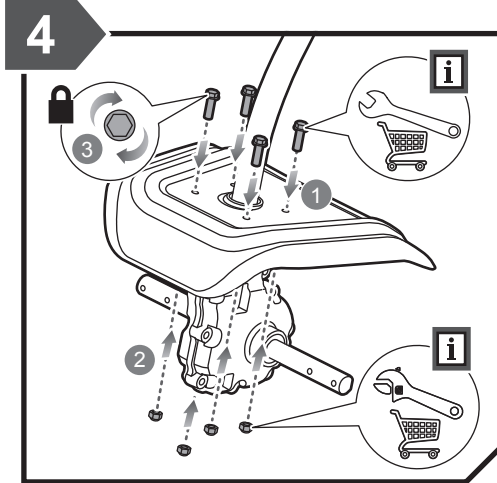
Wear full eye and ear protection, substantial footwear, and long trousers at all times while operating the product. Do not operate the product when barefoot or wearing open sandals.



Push the lock button, and slide out the hanger cap from the cultivator shaft.

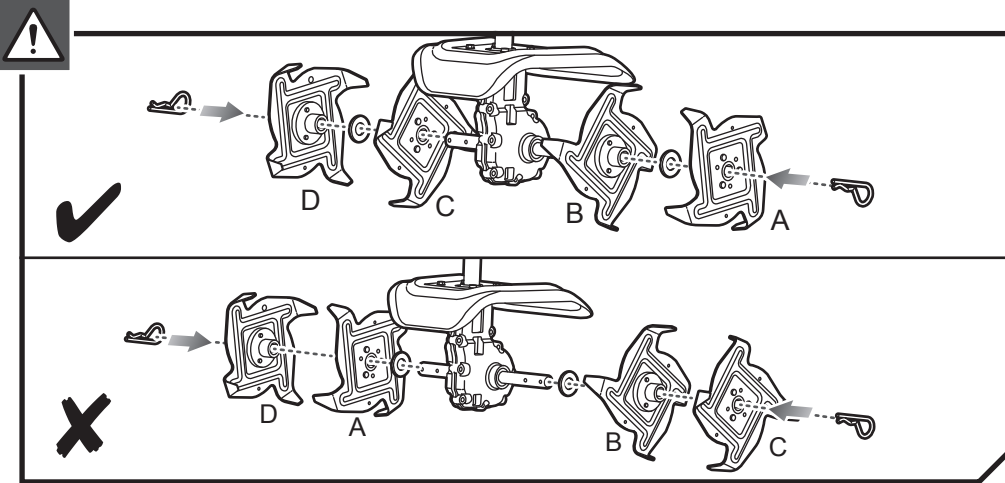


Install the metal cover.



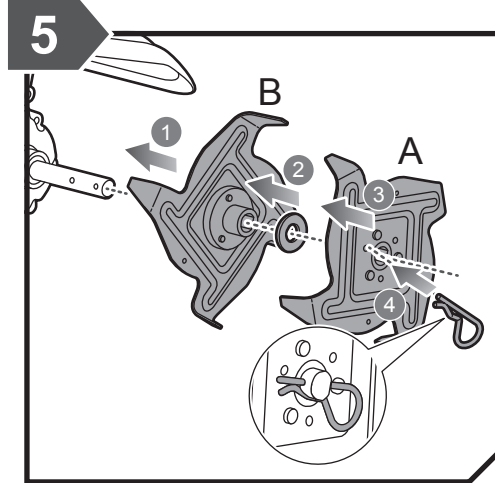
Install the bolts and nuts onto the metal cover, and tighten the bolts.

GETTING STARTED

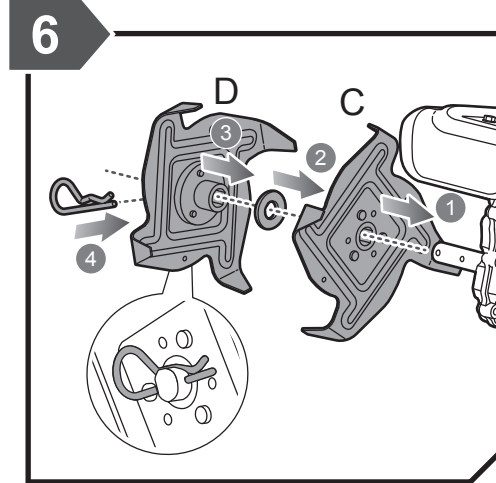


WARNING: The product will not operate properly if the tines are incorrectly installed.

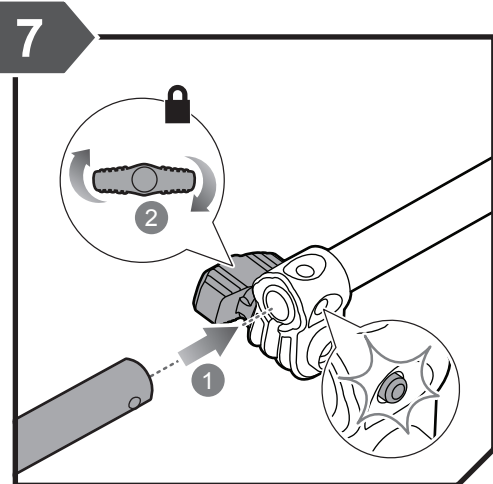
GETTING STARTED



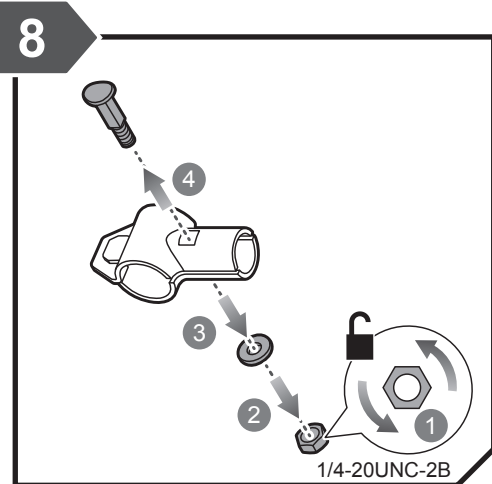
Place tine B on the tine shaft to the right of the gear box. The stamped side of the tine should face away from the gear box. Place a felt washer on the tine shaft. Place the outer tine labeled A on the right side of the tine shaft. The stamped side should face inward, toward tine B. To secure the tines to the tine shaft, insert the hitch pin into the holes at the end of the tine shaft.



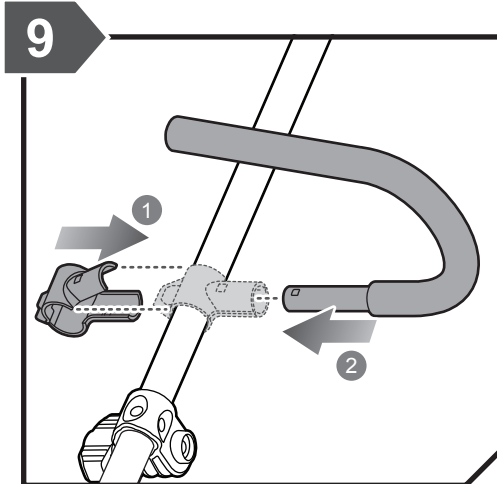
Place tine C on the tine shaft to the left of the gear box. The stamped side of the tine should face away from the gear box. Place a felt washer on the tine shaft. Place the outer tine labeled D on the left side of the tine shaft. The stamped side should face inward, toward tine C. To secure the tines to the tine shaft, insert the hitch pin into the holes located on the side of the tine shaft.



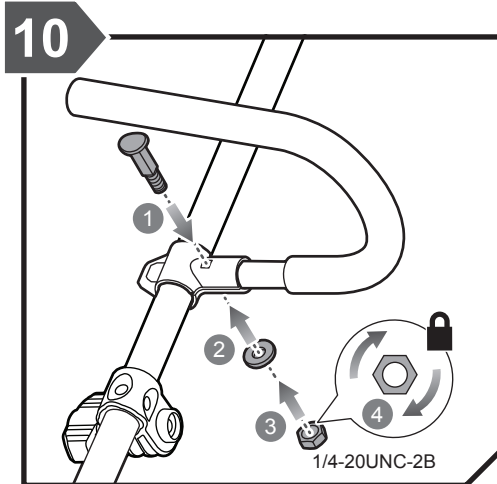
Insert cultivator shaft into the power head shaft until the lock button snaps and locks the cultivator shaft in place. Tighten the knob to secure the shafts.



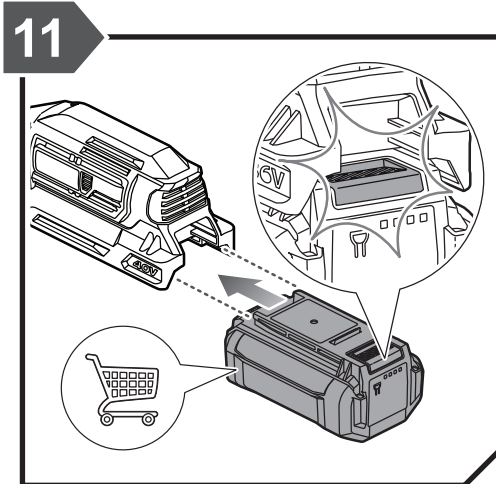
Remove the nut, flat washer, and bolt from the top clamp.



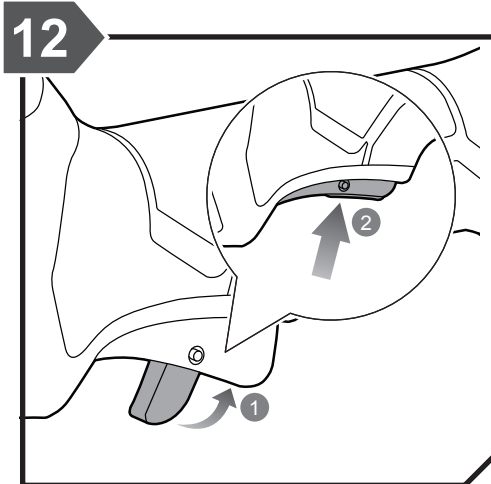
Install the top clamp on the power head shaft. Insert the handlebar into the top clamp.



Install the bolt, flat washer, and nut. Tighten the nut to secure the handlebar.



Insert the battery pack into the product until it snaps in place.

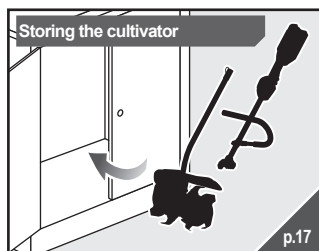
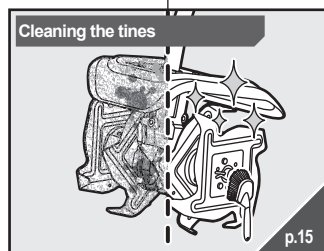
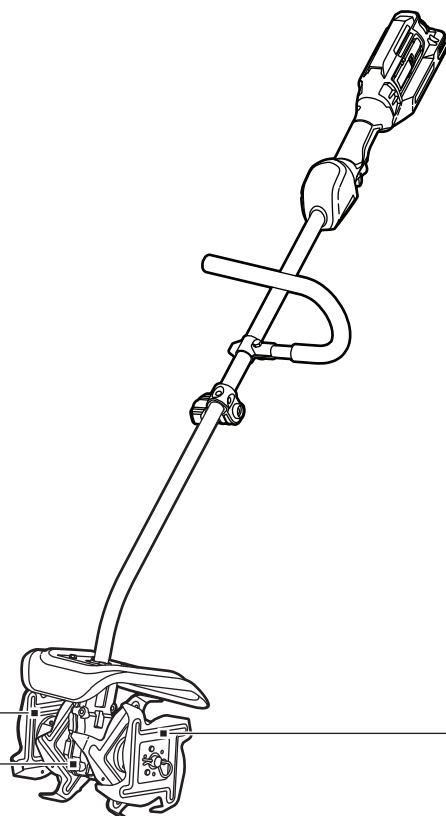
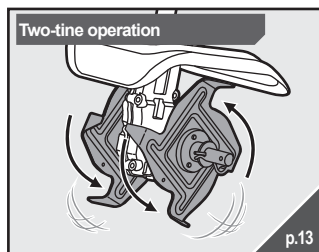
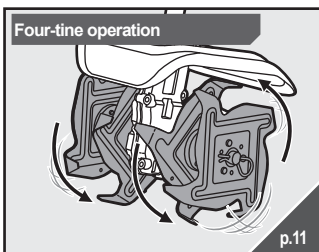


Press and hold the trigger lock out, and squeeze the switch trigger to turn on the product.

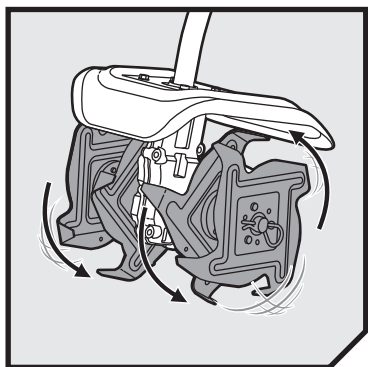


Hold the product by the designated handles and operate the product as shown. The product must be adequately controlled by using two-handed operation at all times.

OVERVIEW



OPERATION

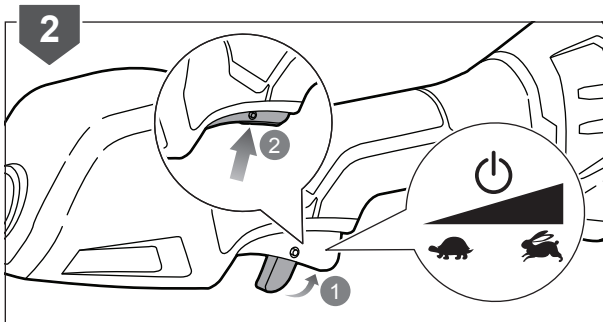
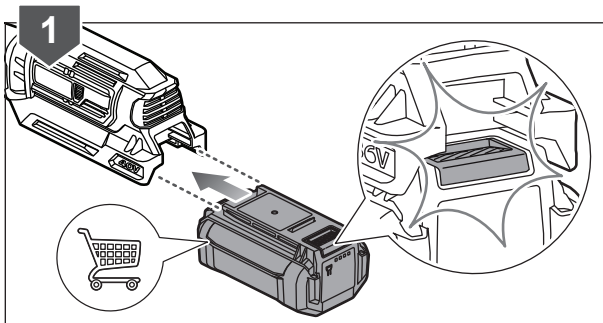
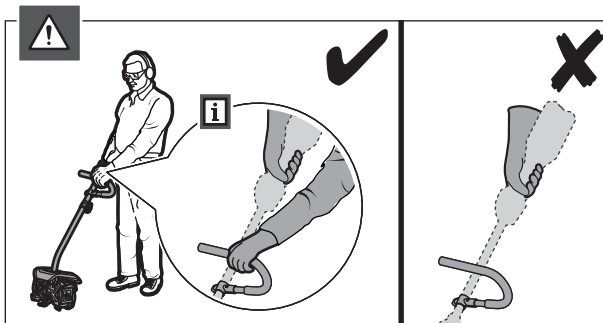
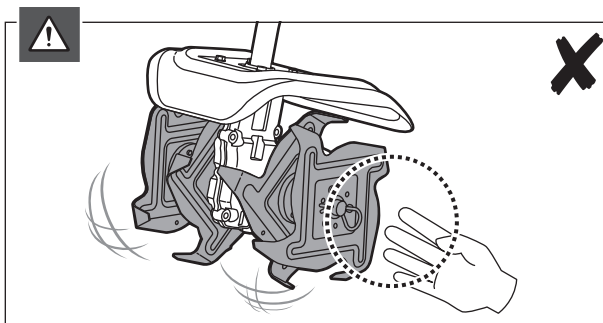


FOUR-TINE OPERATION

WARNING: Keep hands and feet away from the rotating tines at all times.

CAUTION: The product must be adequately controlled by using two-handed operation at all times.

1. Install the battery pack.
2. Press and hold the trigger lock out, and squeeze the switch trigger to turn on the product.

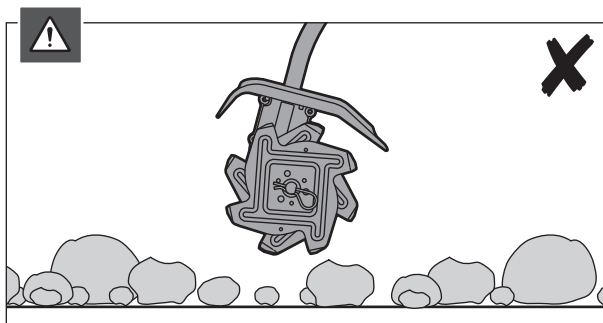
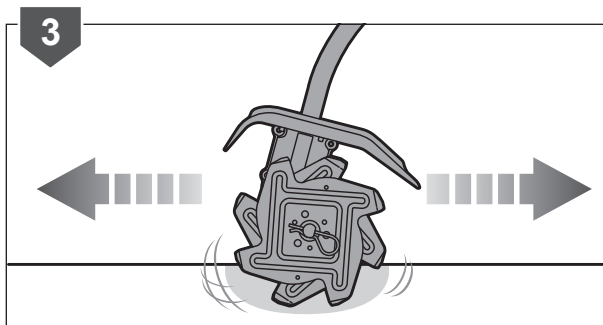


OPERATION

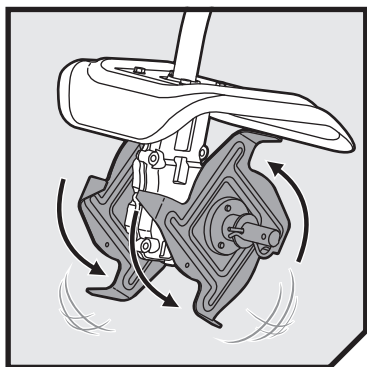
3. Pull and push the cultivator while it is digging in the soil's surface.

NOTE: Use a forward and backward motion when using the product.

WARNING: Never operate the product on rocky surfaces.



OPERATION

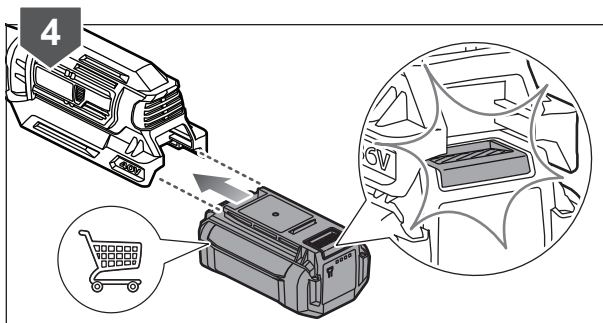
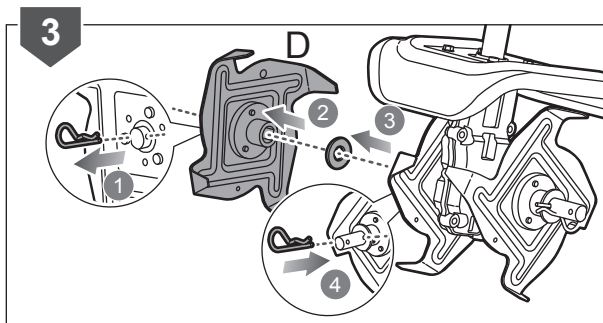
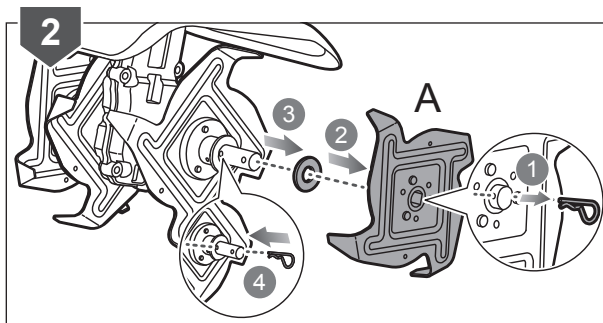
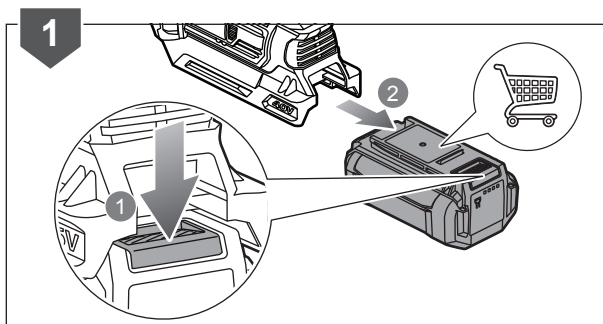


TWO-TINE OPERATION

WARNING: Keep hands and feet away from the rotating tines at all times.

CAUTION: The product must be adequately controlled by using two-handed operation at all times.

1. Remove the battery pack.
2. Remove the hitch pin, tine A, and felt washer.
Reinstall the hitch pin.
3. Remove the hitch pin, tine D, and felt washer.
Reinstall the hitch pin.
4. Install the battery pack.

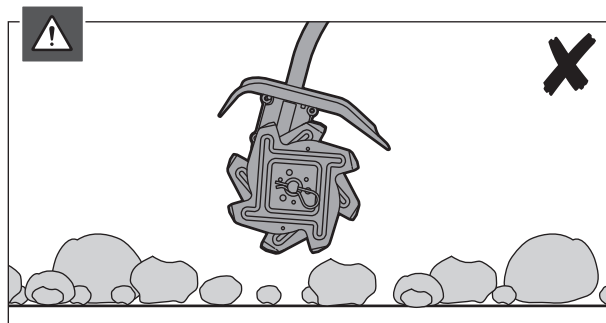
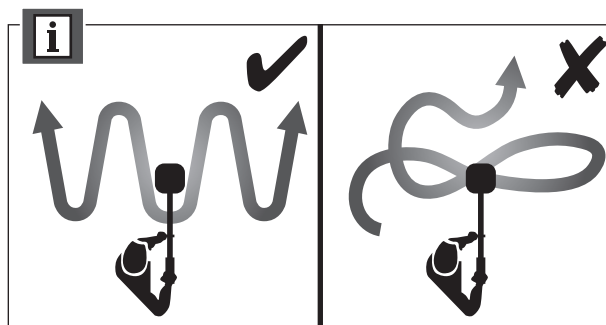
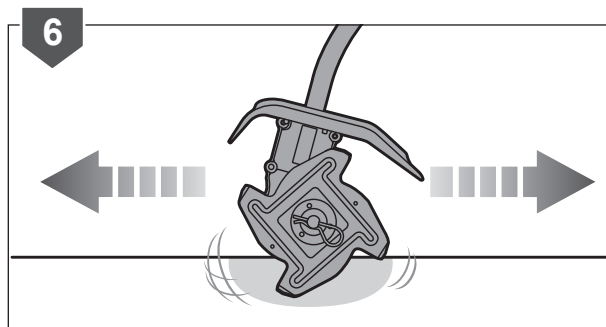
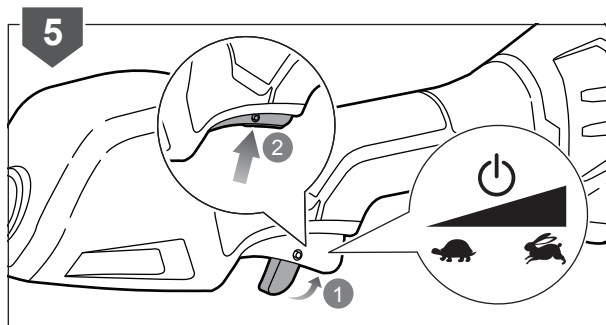


OPERATION

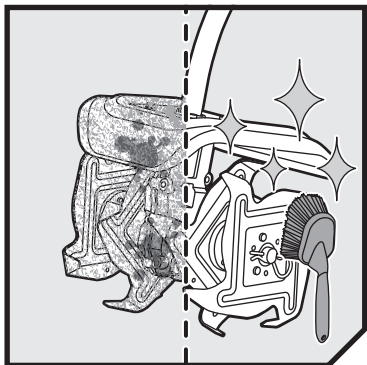
5. Press and hold the trigger lock out, and squeeze the switch trigger to turn on the product.
6. Pull and push the cultivator while it is digging in the soil's surface.

NOTE: Use a forward and backward motion when using the product.

WARNING: Never operate the product on rocky surfaces.



MAINTENANCE

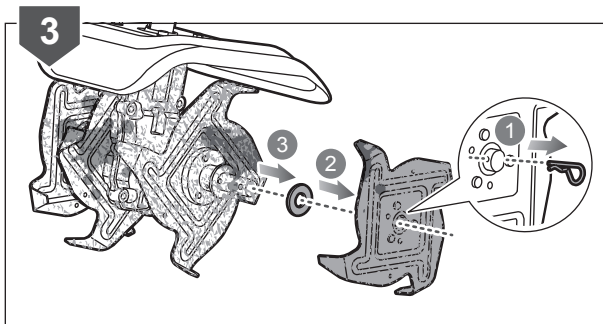
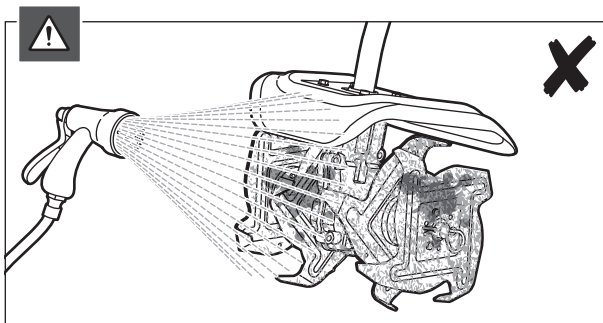
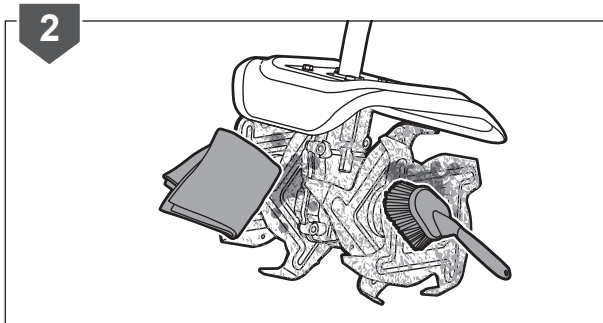
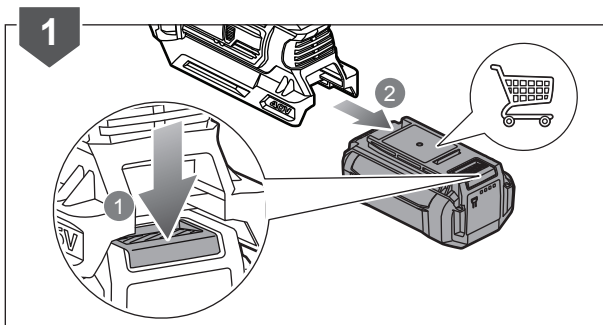


CLEANING THE TINES

1. Remove the battery pack.
2. Clean the product with a soft, dry cloth, and clean the debris from the tines with a stiff brush.

WARNING: Do not use water to clean the tines.

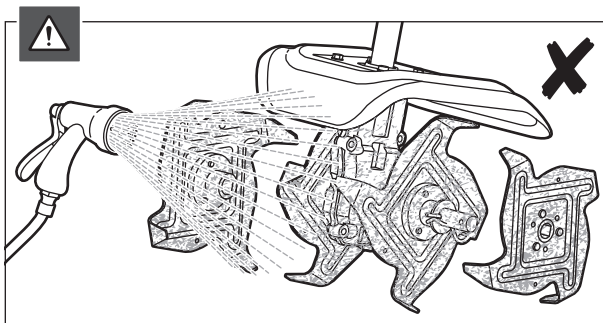
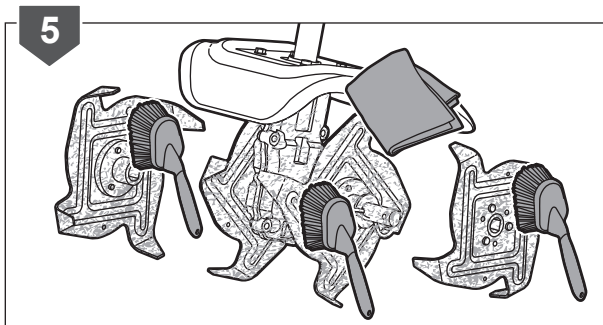
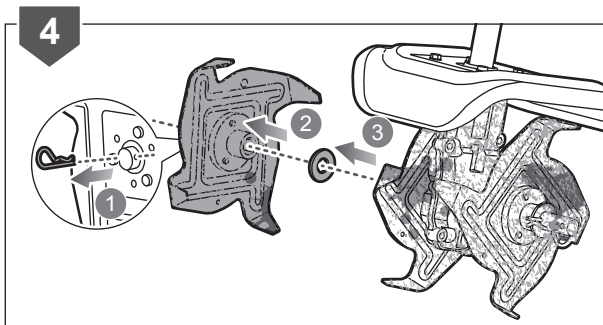
3. Remove the hitch pin, tine A, and felt washer.



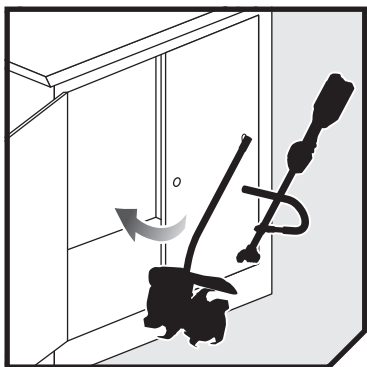
MAINTENANCE

4. Remove the hitch pin, tine D, and felt washer.
5. Clean the product with a soft, dry cloth, and clean the debris from the tines with a stiff brush.

WARNING: Do not use water to clean the tines.



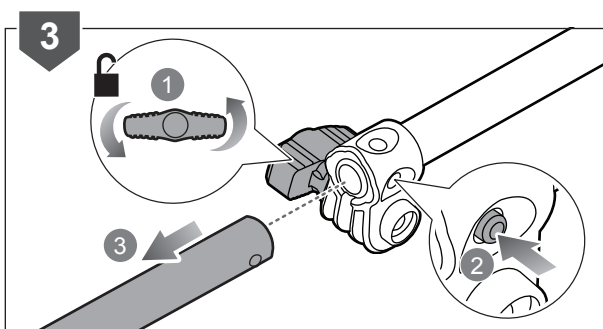
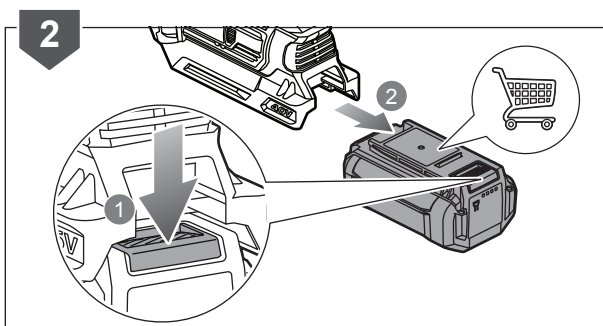
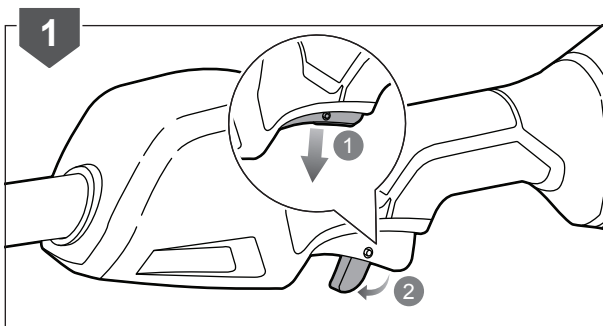
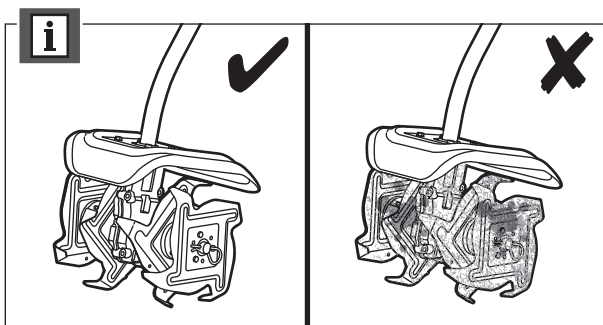
STORAGE



STORING THE CULTIVATOR

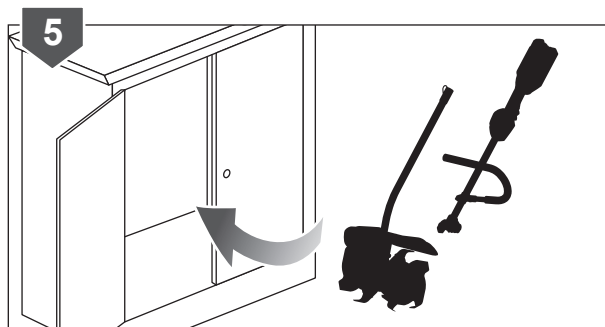
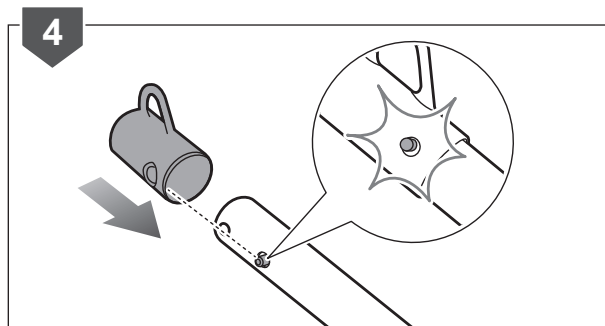
NOTE: Clean and remove all foreign materials from the product before storing.

1. Turn off the product.
2. Remove the battery pack.
3. Loosen the knob, press the lock button, and remove the cultivator shaft.



STORAGE

4. Install the hanger cap.
5. Store the product in a cool, dry, and well-ventilated place that is inaccessible to children and well away from sources of ignition.



PRODUCT SPECIFICATIONS

Cordless Cultivator	
Model	RCV36
Maximum working width	25.4 cm
Minimum working depth	19.7 cm
Total weight	8.8 kg
Power head	2.2 kg
Cultivator attachment	6.6 kg
Rated voltage	36 V
Maximum no-load speed	≈/- 10% of 300 rpm
Noise emission values determined according to EN 709:1997+A4:2009	
A-weighted sound pressure level at the operator position	85.7 dB(A)
A-weighted sound power level	95.2 dB(A)
Uncertainty k	2.5 dB
Guaranteed sound power level	105 dB(A)
Vibration values determined according to EN 709+1997+A4:2009	
Front handle	1.5 m/s ²
Rear handle	1.7 m/s ²
Uncertainty	1.5 m/s ²

BATTERY AND CHARGER

Model	RCV36
Battery pack	not included
Weight	-
Charger	not included
Compatible battery packs	BPL3626, BPL3640, BPL3626D, BPL3640D, BPL3650D, BPL3626D2, BPL3650D2, BPL3640D2, BPL3660D
Compatible charger	BCL3617S, BCL3620, BCL3620S, BCL3650F, BCL3617U, BCL3660F

⚠ WARNING! The declared vibration total values and the declared noise emission values given in this instruction manual have been measured in accordance with a standardised test and may be used to compare one tool with another. They may be used for a preliminary assessment of exposure.

The declared vibration and noise emission values represent the main applications of the tool. However, if the tool is used for different applications, used with different accessories, or poorly maintained, the vibration and noise emission may differ. These conditions may significantly increase the exposure levels over the total working period.

An estimation of the level of exposure to vibration and noise should take into account the times when the tool is turned off or when it is running idle. These conditions may significantly reduce the exposure level over the total working period.

Identify additional safety measures to protect the operator from the effects of vibration and noise, such as maintaining the tool and the accessories, keeping the hands warm (in case of vibration), and organising work patterns.









*RYOBI is a trade mark of Ryobi Limited,
and is used under license.
© 2020 Techtronic Cordless GP.*

Imported by:

Techtronic Industries Australia Pty Ltd
31 Gilby Road, Mount Waverley,
VIC, 3149, Melbourne, Australia

Techtronic Industries N.Z. Limited
Unit C, 70 Business Parade South,
Highbrook, Auckland 2013, New Zealand