

# Plantation Shutters

## INSTALLATION GUIDE

### CONTENTS

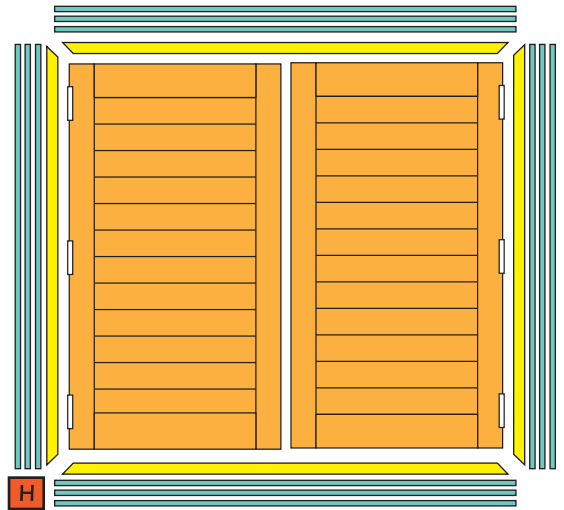
4 Lengths of frame - Top/Bottom/Left/Right

2 Panels - Left/Right with pre-fit hinges

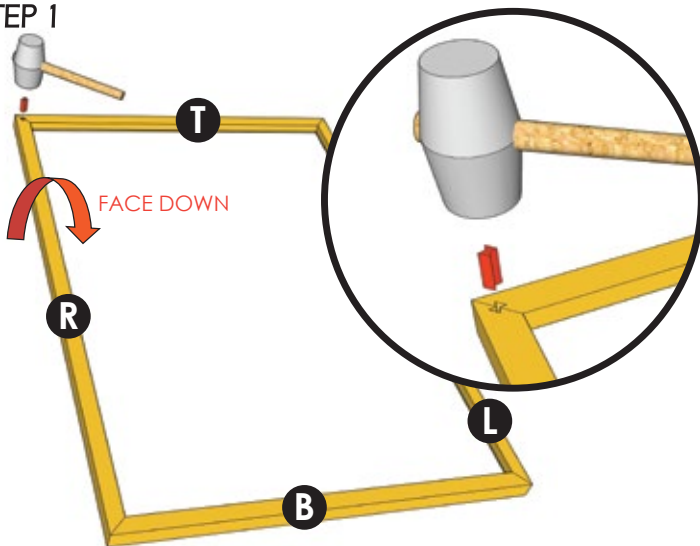
12 Lengths of Packing Strips - 4 Lengths of 5.0mm thick Packing  
- 8 Lengths of 2.5mm thick Packing

Hardware and Components - Hinges & Magnetic Latches are pre-fitted to both the Frame and Panel

BEFORE INSTALLATION ALWAYS DOUBLE-CHECK MEASUREMENTS AND ENSURE THERE IS NO OBSTRUCTION FROM WINDOW HARDWARE OR SILLS  
**SHUTTERS ARE FOR INTERNAL USE ONLY**

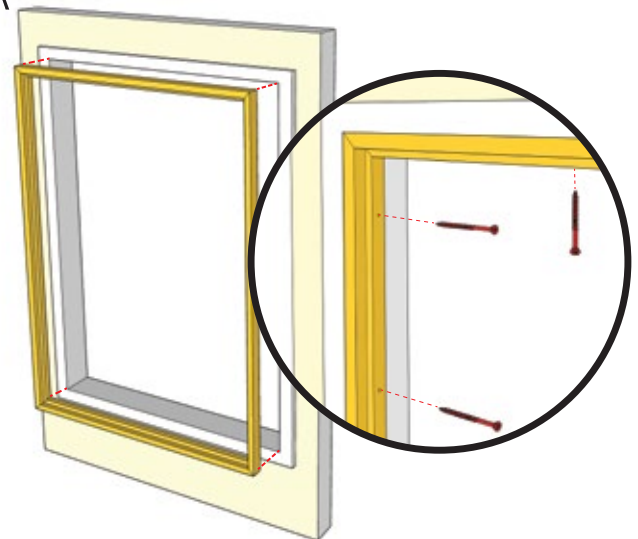


### STEP 1



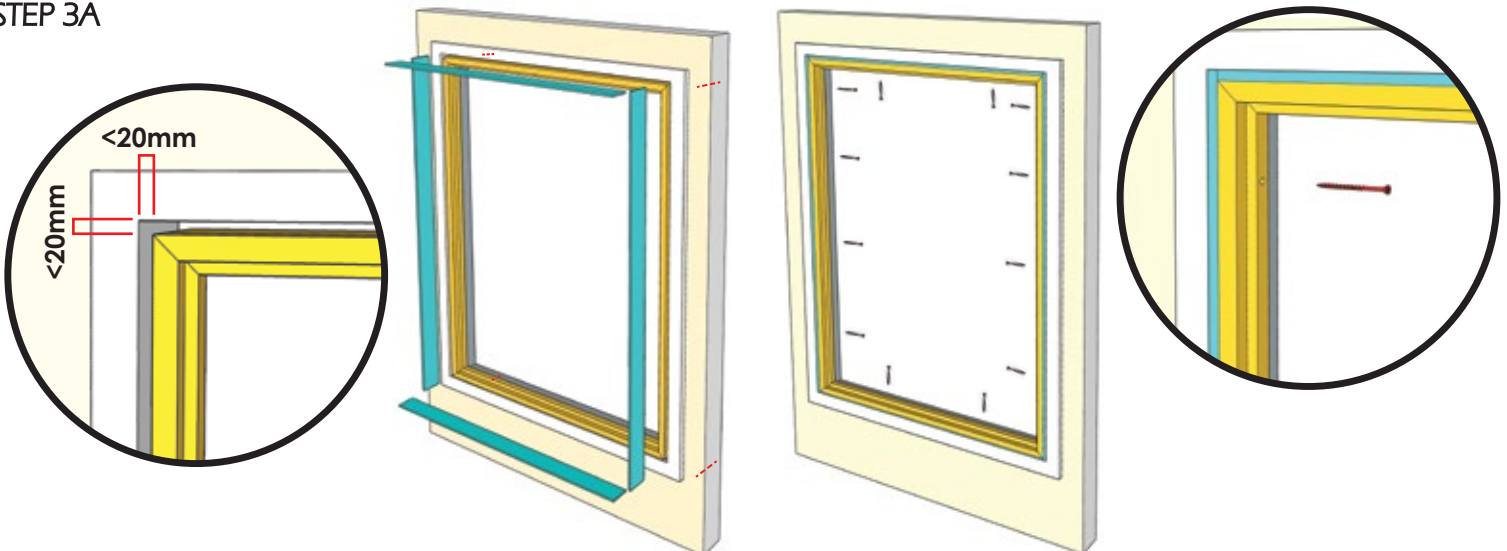
Identify Top/Bottom/Left/Right Frame lengths, lay face down on a soft flat surface. Use Hoffman Key and mallet, wedge into place forming strong corners

### STEP 2A



**RECESS MOUNT** - Align constructed frame with window and insert into opening. Ensure frame is square and fit into place using screws provided. Pre-drill as required.

### STEP 3A



**RECESS MOUNT** - If the recess opening is slightly larger than the frame, 2.5mm and/or 5mm packing pieces can be used to fill up to 20mm in total width & height.

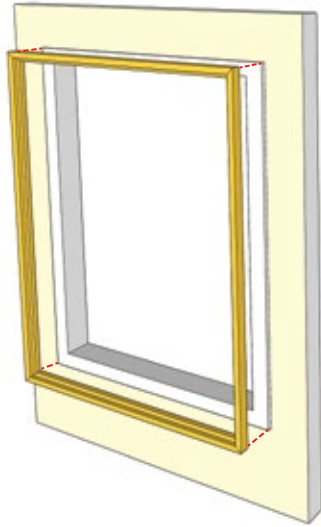
Once the matching packing pieces form a secure fit into the recess, ensure frame is square and fit into place using screws provided. Pre-drill as required.

# Plantation Shutters

## INSTALLATION GUIDE

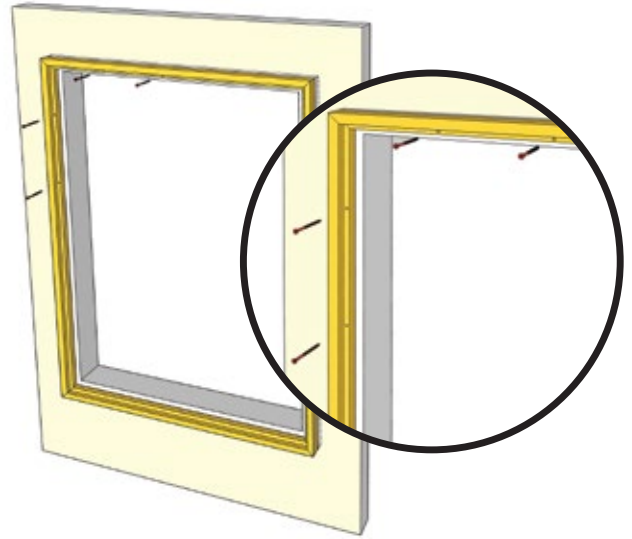
### STEP 2B

PREFERRED  
INSTALLATION  
METHOD IF  
WINDOW  
HARDWARE OR  
SILLS MAY  
CREATE  
OBSTRUCTIONS



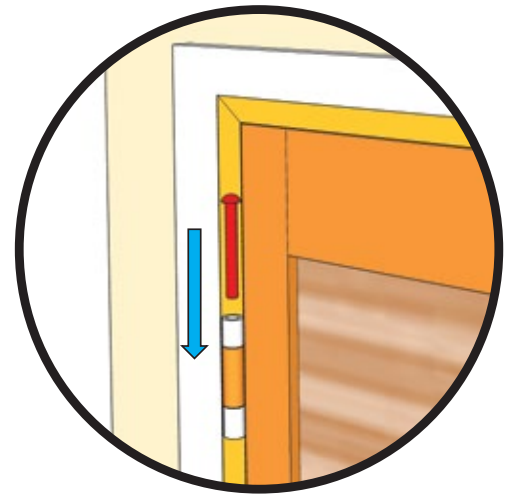
**FACE MOUNT** - Align constructed frame with window architrave. **NOTE:** Not all architraves are square, please check before installation.

### STEP 3B



**FACE MOUNT** - Ensure frame is square and fit into place using screws provided all way around the frame. Pre-drill as required.

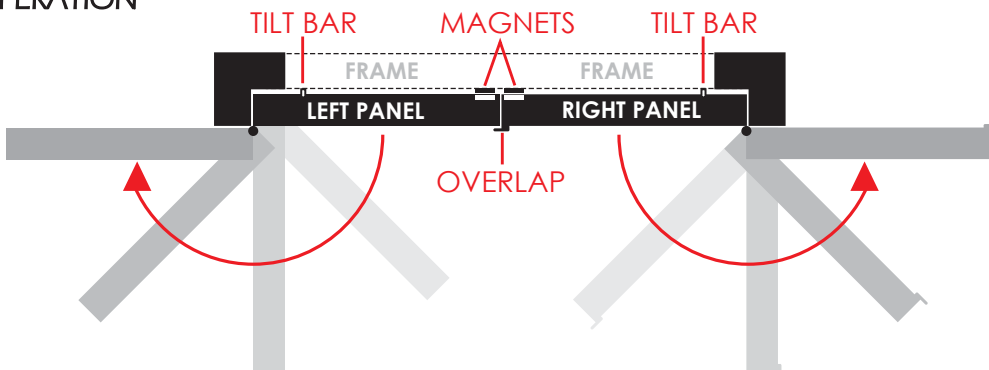
### STEP 4



Once Frame is securely fitted to the window, the Panels can be installed one-by-one. The same process is used for both Recess and Face Mount applications.

Hinges are pre-fitted and panels can simply be lifted into place before dropping in hinge pin. A slight tap using a hammer may be needed. Adjust hinge if required.

### OPERATION



### MAINTENANCE

Periodic dusting is recommended to reduce build up of dust or debris. Stubborn marks can be cleaned using a soft cloth warm water, mild detergent

 PILLÄR

48-50 Access Way  
Carrum Downs,  
Victoria 3201

**Customer Service**  
1300 155 355

[info@pillarproducts.com.au](mailto:info@pillarproducts.com.au)