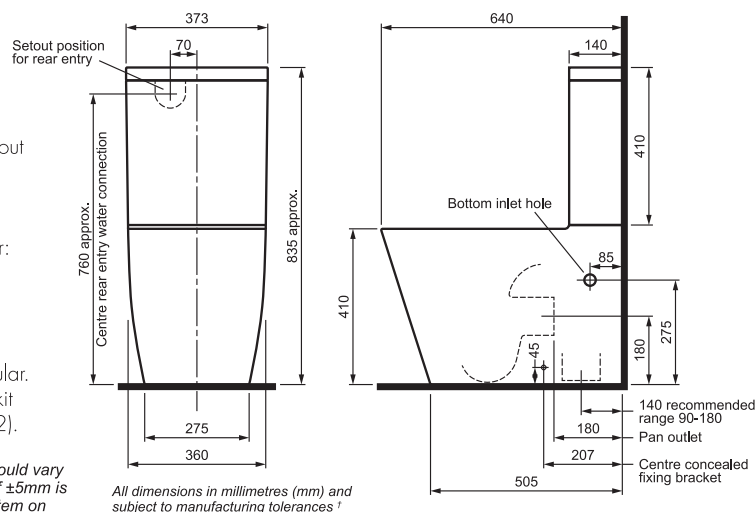


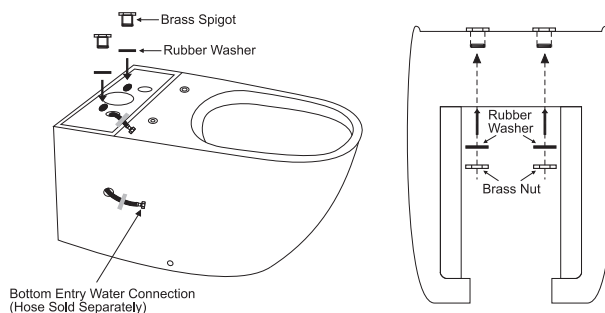
**Mondella**INS A46 V1  
15/01/18**CONCERTO BACK TO WALL TOILET SUITE  
Plumbers Installation Guide****Pre-installation Checks****This product is to be installed by a licensed Plumber**

1. Check that the toilet is compatible with your current setout requirements. This toilet has a setout distance of 90-180mm for S trap and 180mm for P trap.
2. This toilet comes with an S trap vario bend. P trap connection available separately (Bunnings item number: 4760136).
3. Before installing the toilet, please make sure you have received all items and that they are undamaged. Any damage claims after installation will not be accepted.
4. Check that the floor and wall are level and perpendicular.
5. This product is configured for bottom entry. Rear entry kit available separately (Bunnings item number: 4920412).

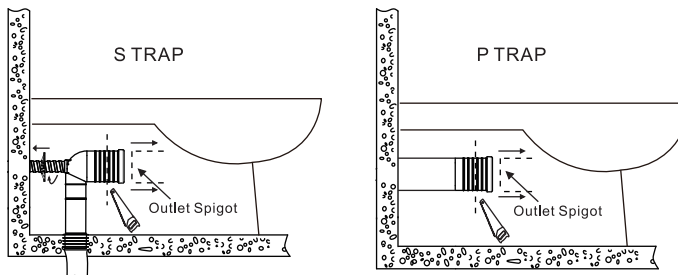
<sup>†</sup> Vitreous China items are subject to manufacturing tolerances and could vary in size from batch to batch. It is industry accepted that a variance of  $\pm 5\text{mm}$  is considered normal. It is recommended to have the Vitreous China item on hand prior to any setout work.

**Bottom Entry Installation**

1. Install the brass spigots and rubber washers into the pan.
2. Feed a flexible connecting hose (sold separately) through the bottom entry hole and through the top of the pan. It's recommended that it is taped temporarily to hold the hose into position (as shown right).
3. Floor fixing kit – measure and install the floor fixing kit (see floor fixing instructions). Do not install the external locking screws at this stage.



4. Insert the vario bend onto the pan outlet spigot. If trimming is required, work out the measurement and mark the cutting line.
5. Check the measurements and then cut the vario bend to the correct length.
6. Place the rubber seal and cover over the front of the vario bend and install, ensuring that the sewer connection is joined correctly and a good seal has been achieved.

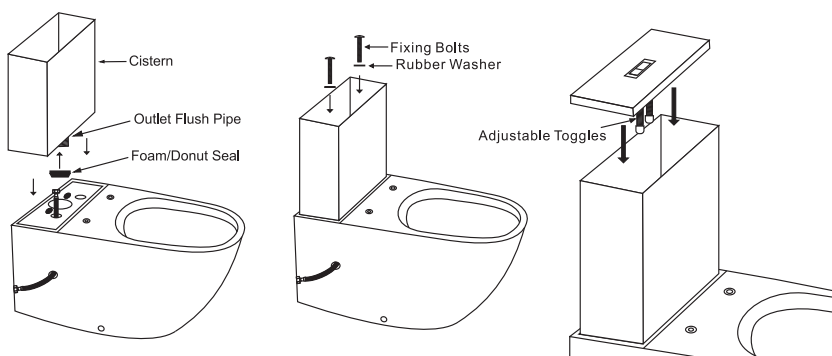


7. Ensure the foam/donut seal is placed over the outlet flush pipe on the base of the cistern.
8. Connect the water supply hose to the base of the cistern's inlet valve.
9. Connect the cistern and pan together using the fixing bolts provided (the outlet flush valve can be removed to assist with bolt assembly by turning it anti-clockwise then lifting it out).
10. Install the flush buttons onto the cistern lid.

Note – button toggles can be adjusted.  
Note – this toilet is not suitable for use with some offset collars and slab adaptors.

Before fixing the toilet to the floor, connect the water supply and ensure that the toilet is working correctly by doing several flush tests. Check for leaks.

Once you are confident that there are no leaks and the toilet is working correctly, install the pan into the floor fixing kit provided and apply a bead of wet area silicone sealant around the base of the pan (refer to sealant instructions and allow recommended drying time before use). Install the white cap over the unused side entry hole. Install the seat after the silicone has dried (refer to seat installation instructions).



# TOILET SEAT INSTALLATION

INS A47 V1  
15/01/18

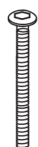
## COMPONENT LIST



(A) Covers x 2



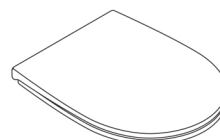
(B) Hinges x 2



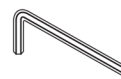
(C) Screws x 2



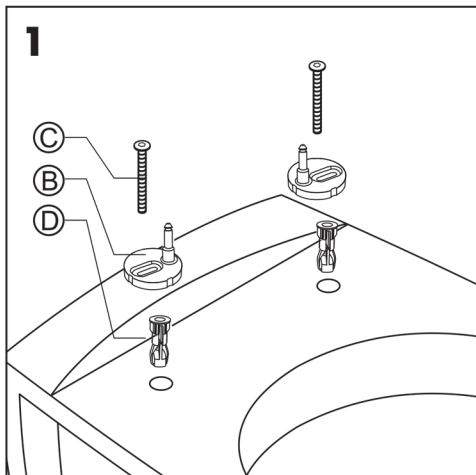
(D) Spigots x 2



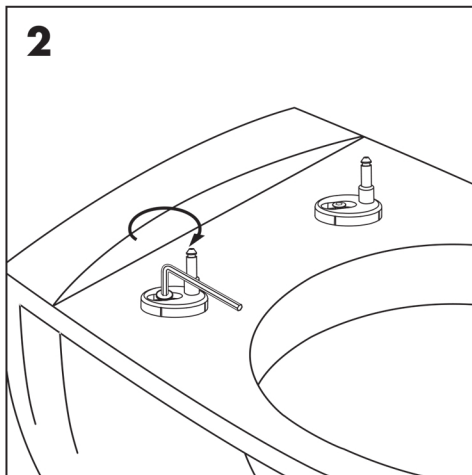
(E) Toilet seat x 1



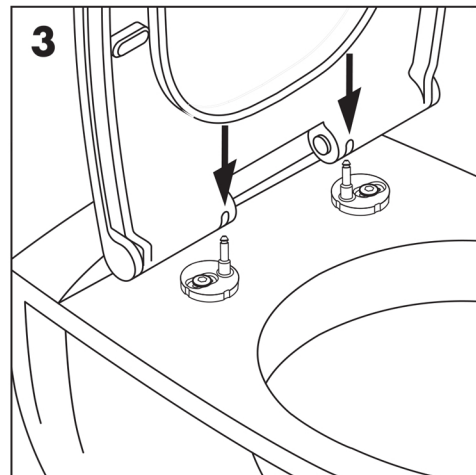
(F) Hex key x 1



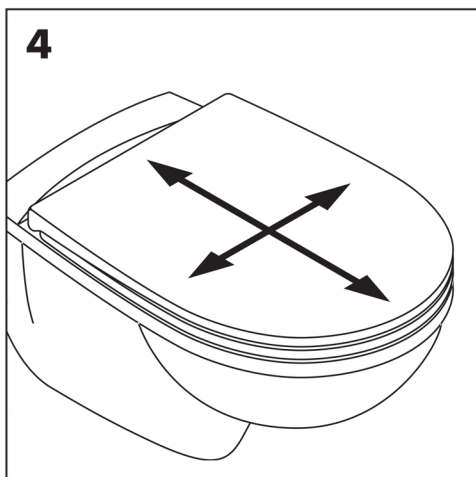
Insert components (B), (C) and (D) into the pan.



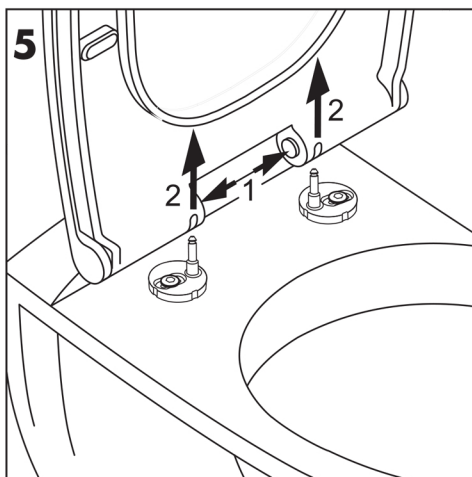
Semi-tighten the screws (C) in a clockwise direction. Do not fully tighten, as the position of the hinges (B) may need to be adjusted.



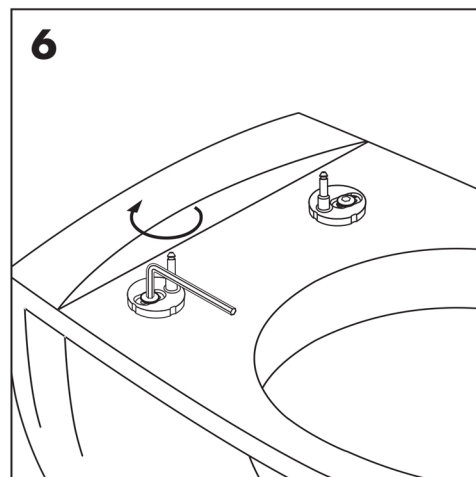
Clip on the toilet seat (E).



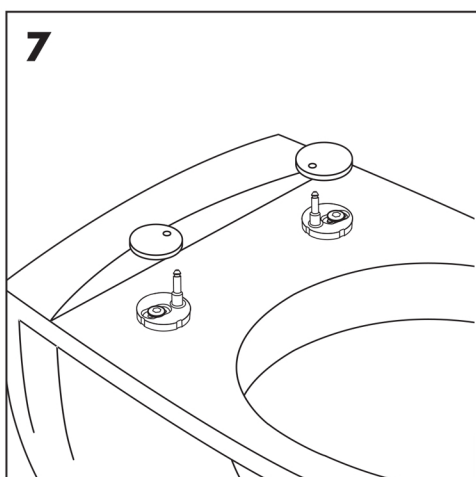
Align the toilet seat (E) with the pan.



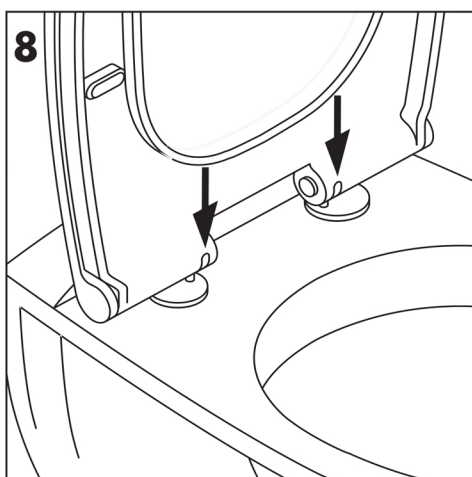
Remove the seat (E) by pressing the release buttons, then lifting it upwards.



Fully tighten the screws (C) in a clockwise direction.



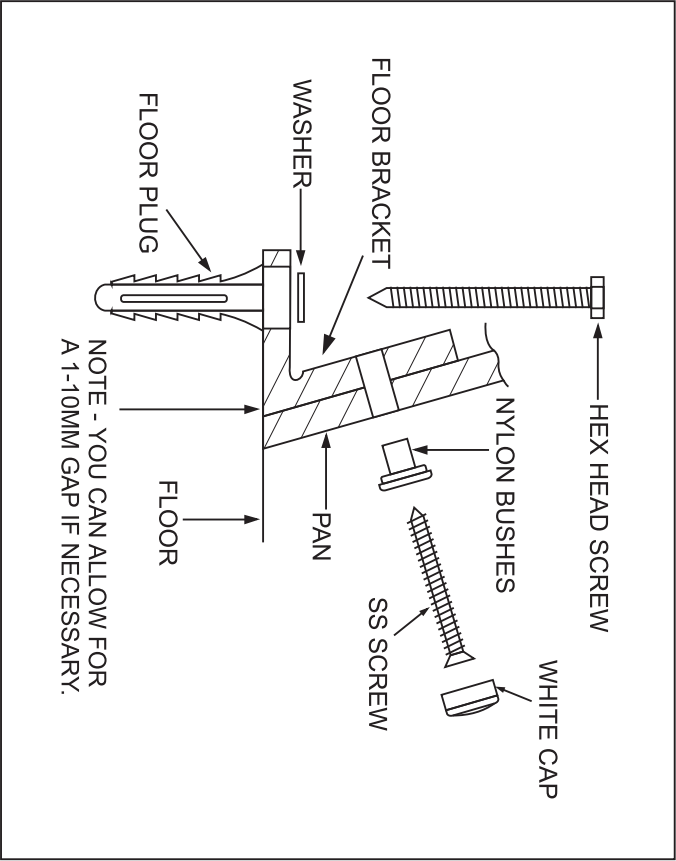
Place the covers (A) over the hinges (B).



Clip on the toilet seat (E).

# PAN FLOOR FIXING GUIDE

1	2 X FLOOR BRACKET
2	2 X FLOOR PLUGS S10 X 50
3	2 X HEX HEAD SCREW 6 X 60
4	2 X WASHERS
5	2 X SS SCREWS 5 X 60
6	2 X NYLON BUSHES
7	2 X CAPS



1	<p>PLACE THE PAN INTO ITS DESIRED INSTALLATION POSITION. TRACE AROUND THE OUTSIDE OF YOUR PAN USING A PENCIL.</p>		
2	<p>MARK OUT WHERE THE 2 HOLES ARE LOCATED ON YOUR PAN.</p>		
3	<p>PAN OUTLINE PAN THICKNESS MARK THE CENTRE OF THE FIXING BRACKET.</p>	<p>REMOVE THE PAN &amp; MEASURE THE DESIRED SCREW FIXING POINTS. REMEMBER TO ALLOW FOR THE PAN THICKNESS. A 1-10MM GAP BETWEEN THE PAN &amp; FIXING BRACKET IS ACCEPTABLE.</p>	
4	<p>DRILL HOLES TO CORRECT DEPTH USING AN APPROPRIATE DRILL BIT THAT SUITS YOUR FLOOR</p>	<p>DRILL HOLES USING AN APPROPRIATE DRILL BIT. APPLY WET AREAS SILICONE INTO THE HOLES &amp; TO THE BASE OF THE FLOOR BRACKET TO HELP KEEP THE FLOOR WATERPROOF. INSTALL THE FLOOR BRACKETS INTO POSITION. DON'T INSTALL SS SCREWS AT THIS POINT.</p>	

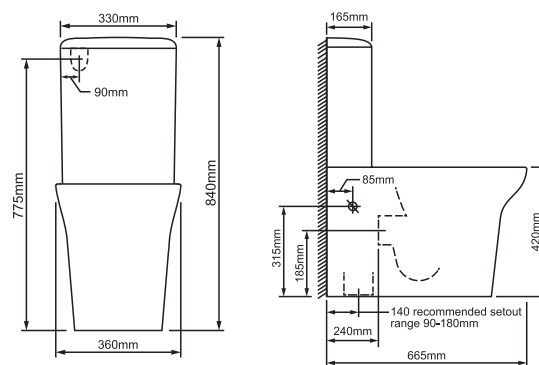
# Mondella

## RUMBA BACK TO WALL TOILET SUITE PLUMBERS INSTALLATION GUIDE

### Pre Installation Checks

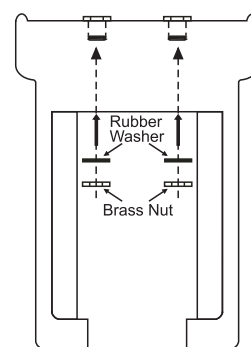
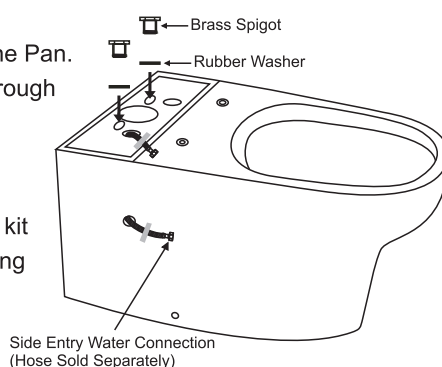
#### This product is to be installed by a licensed Plumber

1. Check that the toilet is compatible with your current set out requirements. This Rumba has a set out distance of 90-180mm for S Trap and 185mm for P Trap
2. This toilet comes with an S Trap Vario Bend, P Trap connection sold separately.
3. Before installing your new toilet please make sure you have received all items and that they are undamaged. Any damage claims after installation will not be accepted.
4. Check that the Floor and Wall are level and Perpendicular.
5. This product is configured for bottom/side entry. Rear entry kit sold separately (Bunnings Item Number: 4920412).

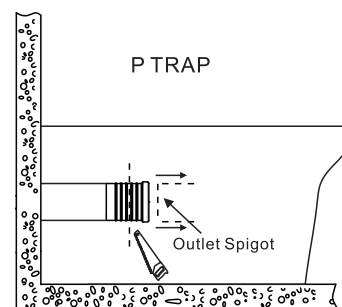
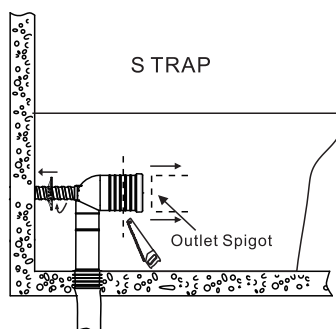


### Side Entry Installation

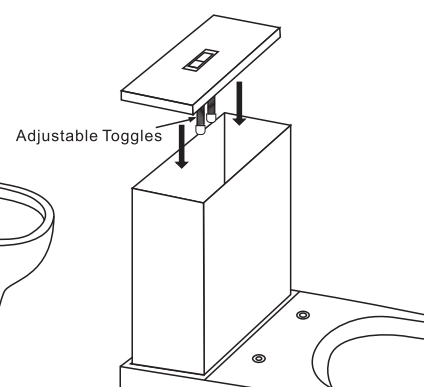
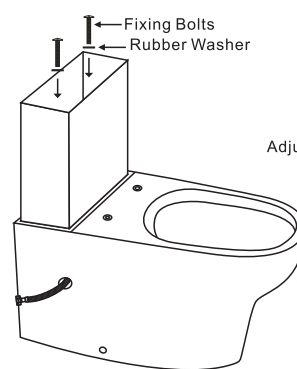
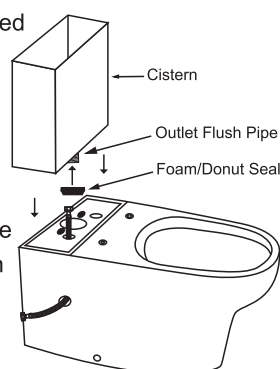
1. Install the Brass Spigots and Rubber washers into the Pan.
2. Feed a flexible connecting hose (sold separately) through the side entry and through the top of the Pan. It's recommended that you tape it temporarily to hold the hose into position (as shown in picture)
3. Floor Fixing Kit – measure and install the floor fixing kit (see instructions in kit) don't install the external locking SS screw at this stage.



4. Insert the Vario Bend onto the Pan Outlet Spigot. If trimming is required work out the measurement and mark the cutting line.
5. Check the measurements & then cut the Vario Bend to the correct length
6. Place Rubber Seal and Cover over the front of the Vario Bend and install, ensure that the sewer connection is connected correctly and that a good seal has been achieved



7. Ensure the Foam/Donut Seal is placed over the Outlet Flush Pipe on the base of the Cistern
8. Connect the Water Supply Hose to the base of the Cisterns Inlet Valve.
9. Connect the Cistern and Pan together and lock into place using the fixing bolts provided. (the outlet flush valve can be removed to assist with the bolt assembly by turning it anti clockwise and then lifting it out)
10. Install the Flush Buttons onto the Cistern lid. Note – Button toggles can be adjusted.  
Note - This toilet is not suitable to be used with some offset collars and slab adaptors.



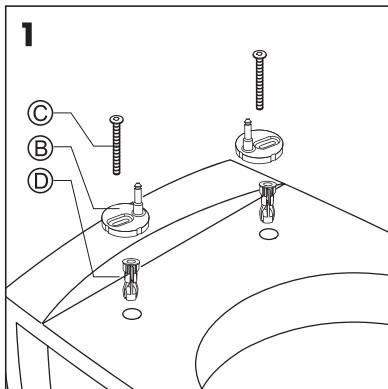
Before fixing the toilet to the floor, connect the water supply and ensure that the toilet is working correctly by doing several flush tests. Check for leaks.

Once you are confident that there are no leaks and the toilet is working correctly install the Pan into the Floor Fixing Kit provided and apply a bead of Wet Area Silicone around the base of the Pan (you will need to allow recommended drying time before use). Install the side white cap over the side entry hole that was not used. Install the seat after the silicone has dried. (refer to seat installation instructions)

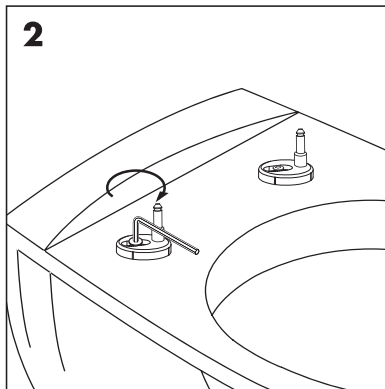
# TOILET SEAT INSTALLATION

INS A47 V1  
15/01/18

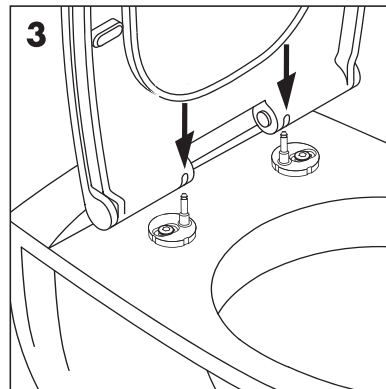
## COMPONENT LIST



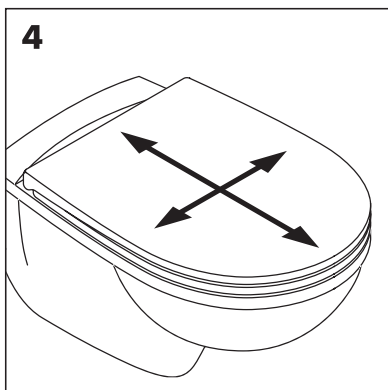
Insert components (B), (C) and (D) into the pan.



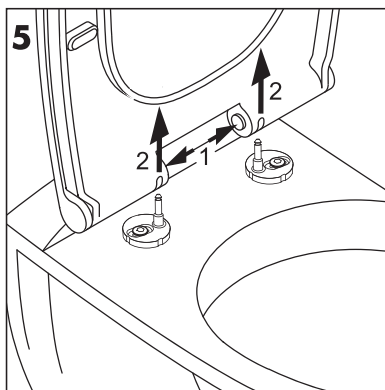
Semi-tighten the screws (C) in a clockwise direction. Do not fully tighten, as the position of the hinges (B) may need to be adjusted.



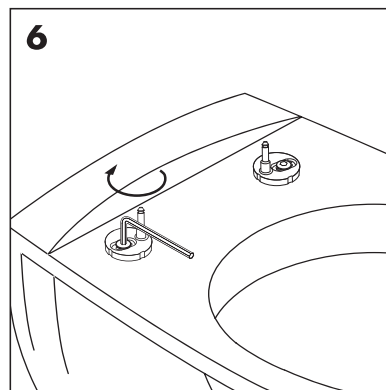
Clip on the toilet seat (E).



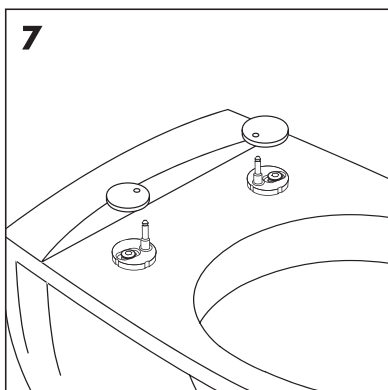
Align the toilet seat (E) with the pan.



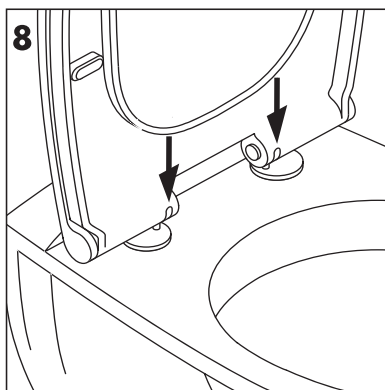
Remove the seat (E) by pressing the release buttons, then lifting it upwards.



Fully tighten the screws (C) in a clockwise direction.



Place the covers (A) over the hinges (B).



Clip on the toilet seat (E).