



URBAN



WARNING

SERIOUS INJURY OR
DEATH CAN BE CAUSED BY
TOPPLING FURNITURE

TO HELP PREVENT A TIP-OVER:

- We recommend you anchor this product to a wall or other suitable surface. • Check anchors regularly

FOR MORE INFORMATION SEARCH: www.productsafety.gov.au

3 TIER INDUSTRIAL BENCH

HEIGHT | WIDTH | DEPTH
540mm | 1200mm | 400mm

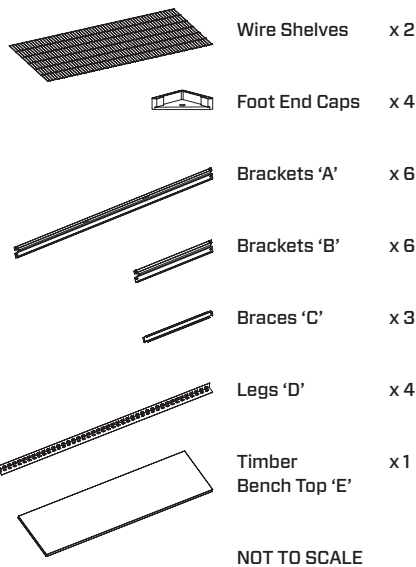
200kg
PER SHELF / BENCH

POWDER COATED
MATTE BLACK

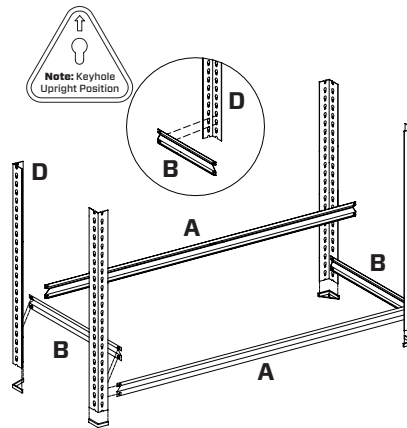
SAFETY TIP:

When assembling or installing this product wear protective gloves and eyewear.

Parts List:

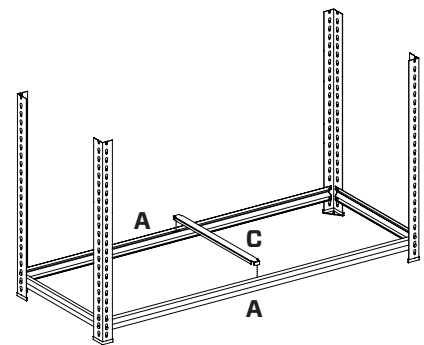


Step 1



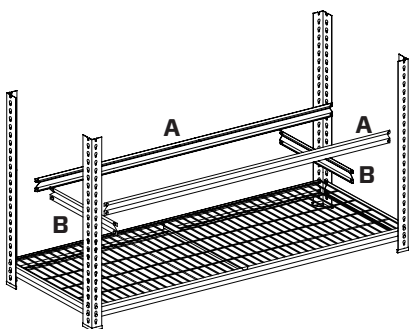
Add Foot End Caps to bottom of Legs 'D'. Fix Brackets 'A' to the bottom of Legs 'C' as shown followed by Brackets 'B'. A rubber mallet can be used to lightly tap all brackets into the keyholes of the legs. Allow one keyhole free between the foot end cap and the shelving bracket.

Step 2



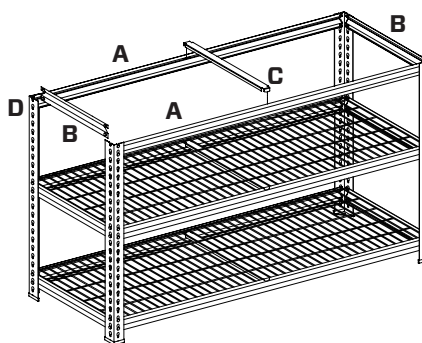
Slot Brace 'C' into position through the holes provided on Brackets 'A'.

Step 3



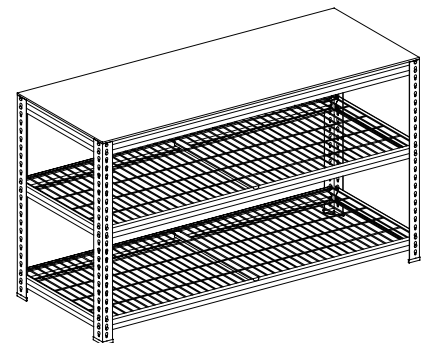
Lay Wire Shelf between the bottom brackets as shown. Fix Brackets 'A' and Brackets 'B' to desired shelf height. As before, a rubber mallet can be used to lightly tap all brackets into the keyholes of the legs. Slot Brace 'C' into position through the holes provided on Brackets 'A'.

Step 4



Lay Wire Shelf between the middle brackets as shown. Fix Brackets 'A' to the top of Legs 'D' as shown followed by Brackets 'B'. A rubber mallet can be used to lightly tap all brackets into the keyholes of the legs. Slot Brace 'C' into position through the holes provided on Brackets 'A'.

Step 5



Lay Timber Bench Top 'E' between the top brackets as shown to complete your bench.

PLEASE NOTE: We recommend you anchor this product to a wall or other suitable surface.

WARRANTY CONDITIONS: Any claim under this warranty must be made within 1 year of the date of purchase of the product. To make a claim under this warranty, take the product (with proof of purchase) to any Bunnings store (for AUS customers see www.bunnings.com.au and for NZ customers see www.bunnings.co.nz for store locations). Pinnacle Hardware bears reasonable, direct expenses of claiming under the warranty. You may submit details and proof of purchase to our support centre for consideration. The warranty covers manufacturer defects in materials, workmanship and finish under normal use. This warranty is provided in addition to other rights and remedies you may have under law. Our goods come with guarantees that cannot be excluded under the Australian consumer law or Consumer Guarantees Act 1993 (NZ). You are entitled to a replacement or refund for a major failure and compensation for any other reasonably foreseeable loss or damage. You are also entitled to have the goods repaired or replaced if the goods fail to be of acceptable quality and the failure does not amount to a major failure. This warranty excludes damage resulting from product misuse or product neglect, any modifications, additions or alterations to the product including the addition of extra shelves. Additions or modifications can compromise the structure and safety of the product. The warranty covers domestic use only and does not apply to commercial applications. This warranty is given by Pinnacle Hardware, ABN 87 614 496 196, 28 Hudson Court, Keysborough Vic 3173, 1800 349 776, Email: support@pinnacle.net.au. Products sold in New Zealand are imported by Bunnings New Zealand. 'Pinnacle' is a trademark © Pinnacle Hardware. Suitable for model number GDS104.