

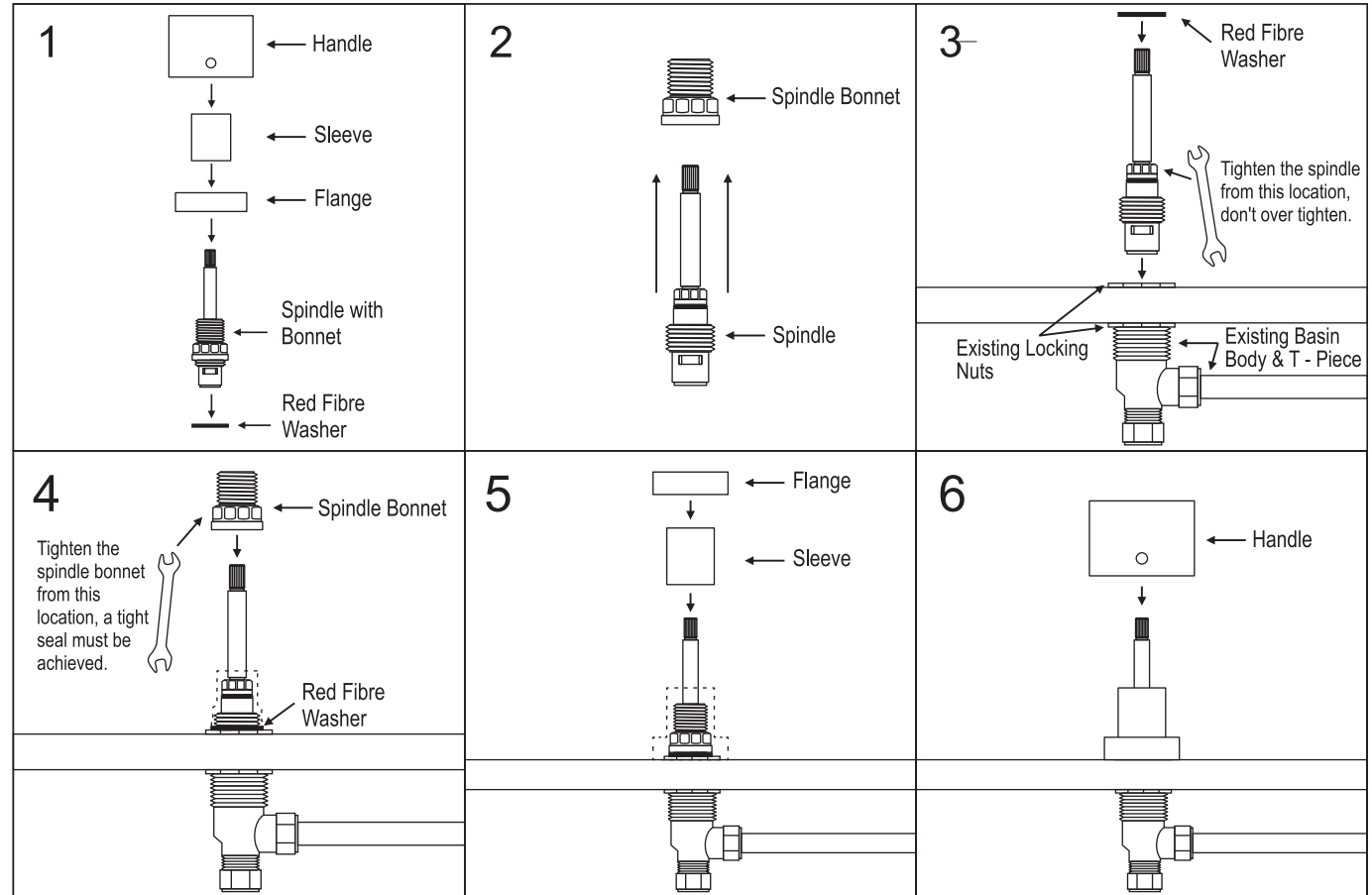
### INSTALLATION

**IMPORTANT NOTE:** Please check your relevant state laws before undertaking DIY plumbing repairs.

1. Turn off the water supply at the mains or isolation taps (if installed). Remove the existing handles, flanges and spindles from the existing basin bodies.

**NOTE:** Do not remove the basin bodies, T-piece or locking nuts from the existing basin set.

2. Unscrew the spindle bonnets from the new spindles.
3. Install the new spindles into the basin bodies. Do not overtighten as this may cause the base rubber seal to be overcompressed and cause damage and/or leaks.
4. Place the fibre washers over the spindles ensuring it is sitting flat against the basin bodies, then screw on the spindle bonnets and tighten.
5. Thread the sleeves onto the spindle bonnets. Push the flanges over the sleeves and push down firmly against the basin/bench top.
6. Install the handles onto the spline of the spindles. Secure them to the spindles by tightening the grub screws through the hole on the back of the handles. Ensure that the H and C indicators on the handles are facing the correct direction.
7. Turn on the water supply and check for leaks.



### WORKING SPECIFICATIONS

Recommended working pressure: 150 - 500kPa

**NOTE:** New Regulation - 500kPa maximum operating pressure at any outlet within a building (Refer AS/NZS 3500.1-2015, Clause 3.3.4). Also check local authority requirements.

### CARING FOR YOUR PRODUCT

- Under no circumstances should you install tapware using acetone silicones.
- Never use harsh detergents or abrasive cleaners, as these will scratch the surface. Using a soft dry cloth or a soft cloth with warm soapy water is recommended.
- Where your tapware remains dry in use, a soft cloth can be used to remove surface dust. Alternatively, a wipe over with warm soapy water is all that is required to maintain the finish in perfect condition for a lifetime of use.
- Use of wax based furniture cream should be avoided as these can result in a build up of deposits, which could detract from the appearance.
- Do not use undue pressure and wipe in one direction only.