

# RYOBI®

RLT1832X5  
RLT1832LI25  
OLT1832

ORIGINAL INSTRUCTIONS

## Cordless Line Trimmer / Edge Trimmer



## **Important!**

It is essential that you read the instructions in this manual before assembling, operating, and maintaining the product.

Subject to technical modification.

Safety, performance, and dependability have been given top priority in the design of your cordless line trimmer or edge trimmer.

## INTENDED USE

The cordless line trimmer or edge trimmer is intended to be used only by adults who have read and understood the instructions and warnings in this manual and can be considered responsible for their actions.

The product is intended only for outdoor use in a well-ventilated area. For safety reasons, the product must be adequately controlled by a two-handed operation.

When fitted with the line trimmer head (and appropriate guard), the product is intended for cutting long grass, pulpy weed, and similar vegetation at or about ground level. The cutting plane should be approximately parallel to the ground surface when trimming and approximately vertical when edging.

The product should not be used to cut or trim hedges, bushes, or other vegetation where the cutting plane is not parallel to the ground surface.

Do not use the product for any other purpose.

## GENERAL SAFETY WARNINGS

### WARNING

**Read all safety warnings and all instructions.** Failure to follow the warnings and instructions may result in electric shock, fire, and/or serious injury.

### WARNING

When using the product, the safety rules must be followed. For your own safety and that of bystanders, please read these instructions before operating the product. Please keep the instruction safe for later use.

### WARNING

This product is not intended to be used by children or persons with reduced physical, mental, or sensory capabilities. Children should be adequately supervised to ensure that they do not play with the product.

### WARNING

Some regions have regulations that restrict the use of the product. Check with your local authority for advice.

## TRAINING

- Read the instructions carefully. Be familiar with all controls and the proper use of the product.
- Never allow children or people who are unfamiliar with these instructions to use the product. Local regulations may restrict the age of the operator.
- Keep bystanders, children, and pets 15 m away from the area of operation. Turn off the product if anyone enters the area.

- Never use the product while tired, ill, or under the influence of alcohol, drugs, or medication.
- Keep in mind that the operator or user is responsible for accidents or hazards occurring to other people or their property.

## PREPARATION

- Wear full eye and hearing protection while operating the product. If working in an area where there is a risk of falling objects, head protection must be worn.
- Hearing protection may restrict the operator's ability to hear warning sounds. Pay particular attention to potential hazards around and inside the working area.
- Wear heavy, long trousers, boots, and gloves. Do not wear loose-fitting clothing, short trousers, or jewellery of any kind. Do not use the product with bare feet.
- Secure long hair so that it is above shoulder level to prevent entanglement in moving parts.
- Before use and after any impact, check that there are no damaged parts on the product. A defective switch or any part that is damaged or worn should be properly repaired or replaced by an authorised service centre.
- Make sure that the cutting attachment is properly installed and securely fastened.
- Never operate the product unless all guards, deflectors, and handles are properly and securely attached.
- Consider the environment in which you are working. Keep the working area free from wires, sticks, stones, and debris, which if struck by the cutter can become thrown objects.

## BATTERY TOOL USE AND CARE

- Recharge only with the charger specified by the manufacturer. A charger that is suitable for one type of battery pack may create a risk of fire when used with another battery pack.
- Use power tools only with specifically designated battery packs. The use of any other battery packs may create a risk of injury and fire.
- When the battery pack is not in use, keep it away from other metal objects, like paper clips, coins, keys, nails, screws, or other small metal objects that can make a connection from one terminal to another. Shorting the battery terminals together may cause burns or a fire.
- Under abusive conditions, liquid may be ejected from the battery. Avoid contact. If contact accidentally occurs, flush with water. If liquid contacts eyes, additionally seek medical help. Liquid ejected from the battery may cause irritation or burns.

## LINE TRIMMER / EDGE TRIMMER SAFETY WARNINGS

- Never allow children, persons with reduced physical, sensory, or mental capabilities or lack of experience and knowledge, or people who are unfamiliar with these instructions to use the product.
- Use the product in daylight or with good artificial light.
- Avoid using the product on wet grass.
- Keep proper footing and balance at all times, and be sure of proper footing on slopes.

- Do not walk backwards when using the product. Walk, never run.
- Keep the head attachment below waist level.
- Never use the product with damaged guards or without guards in place.
- Do not fit a metal replacement line.
- Keep hands and feet away from the cutting means at all times, especially when turning on the motor.
- Beware, the cutting elements continue to rotate after the motor is turned off.
- Beware of objects thrown by the cutting means. Clear debris like small stones, gravel, and other foreign objects from the work area before starting operation. Wires or string may become entangled with the cutting means.
- To reduce the risk of injury associated with contacting moving parts, always turn off the product, remove the battery pack, and allow both to cool down. Make sure that all moving parts have come to a complete stop:
  - before servicing
  - before leaving the product unattended
  - before clearing a blockage
  - before checking, cleaning, and working on the product
  - before changing accessories
  - after striking a foreign object
  - whenever performing maintenance
  - whenever the product starts to vibrate abnormally
- Wear full eye and hearing protection while using the product. If working in an area where there is a risk of falling objects, head protection must be worn.
- Hearing protection may restrict the operator's ability to hear warning sounds. Pay particular attention to potential hazards around and inside the working area.
- Wear long trousers, boots, and gloves. Do not wear loose-fitting clothing, short trousers, or jewellery of any kind. Do not use the product with bare feet.
- Secure long hair so that it is above shoulder level to prevent entanglement in moving parts.
- The small blade fitted to the safety guard is designed to trim the newly extended line to the correct length for safe and optimum performance. The blade is very sharp. Do not touch the blade, particularly when cleaning the product.
- Always ensure that ventilation openings are kept clear of debris.
- Before use and after any impact, check that there are no damaged parts on the product. A defective switch or any part that is damaged should be properly repaired or replaced by an authorised service centre.
- Make sure that the cutting head attachment is properly installed and securely fastened.
- Make sure that all guards, deflectors, and handles are properly and securely attached.
- Do not modify the product in any way. This may increase the risk of injury to yourself or others.
- Use only the manufacturer's replacement cutting line. Do not use any other cutting attachment.

- Immediately turn off the product and remove the battery pack in the event of an accident or breakdown. Do not operate the product again until it has been fully checked by an authorised service centre.

#### **⚠ WARNING**

Ensure that the line cut-off blade in the guard is properly positioned and secured before each use.

### **ADDITIONAL BATTERY SAFETY WARNINGS**

#### **⚠ WARNING**

To reduce the risk of fire, personal injury, and product damage due to a short circuit, never immerse the tool, battery pack, or charger in fluid or allow fluid to flow inside them. Corrosive or conductive fluids, such as seawater, certain industrial chemicals, and bleach or bleach-containing products, etc., can cause a short circuit.

### **TRANSPORTATION AND STORAGE**

- Turn off the product, remove the battery pack, and allow both to cool down before storing or transporting.
- Remove all foreign materials from the product.
- Do not store or transport the product with batteries fitted. Remove and secure the batteries separately. Store the product in a cool, dry, and well-ventilated place that is inaccessible to children. Keep the product away from corrosive agents, such as garden chemicals and de-icing salts. Do not store the product outdoors.
- For transportation in vehicles, secure the product against movement or falling to prevent injury to persons or damage to the product.

### **TRANSPORTING LITHIUM BATTERIES**

Transport the battery in accordance with local and national provisions and regulations. Follow all special requirements on packaging and labelling when transporting batteries by a third party.

Ensure that no batteries can come in contact with other batteries or conductive materials while in transport by protecting exposed connectors with insulating, non-conductive caps or tape. Do not transport batteries that are cracked or leaking. Check with the forwarding company for further advice.

### **MAINTENANCE**

#### **⚠ WARNING**

Use only original manufacturer's replacement parts, accessories, and attachments. Failure to do so can cause possible injury, can contribute to poor performance, and may void your warranty.

### ⚠ WARNING

Servicing requires extreme care and knowledge and should be performed only by a qualified service technician. Have the product serviced by an authorised service centre only. When servicing, use only original replacement parts.

- Turn off the product and remove the battery pack before conducting any maintenance or cleaning work.
- You may make adjustments and repairs described in this manual. For other repairs, contact an authorised service centre.
- For the replacement line, use only a nylon filament line of the diameter described in the specifications table of this manual.
- After extending the new cutter line, always return the product to its normal operating position before starting.
- After each use, clean the product with a soft, dry cloth. Any part that is damaged should be properly repaired or replaced by an authorised service centre.
- Check all nuts, bolts, and screws at frequent intervals for proper tightness to ensure that the product is in safe working condition. Any part that is damaged should be properly repaired or replaced by an authorised service centre.
- Bring the product to an authorised service centre to replace damaged or unreadable labels.

### RESIDUAL RISKS

Even when the product is used as prescribed, it is still impossible to completely eliminate certain residual risk factors. The following hazards may arise during use, and the operator should pay special attention to avoid the following:

- injury caused by vibration
  - Hold the product by the designated handles, and restrict working time and exposure.
- injury caused by exposure to noise
  - Wear hearing protection, and limit exposure.
- injury caused by flying debris
  - Wear eye protection at all times.

### RISK REDUCTION

It has been reported that vibrations from handheld tools may contribute to a condition called Raynaud's Syndrome. Symptoms may include tingling, numbness, and blanching of the fingers, usually apparent upon exposure to cold. Hereditary factors, exposure to cold and dampness, diet, smoking, and work practices are all thought to contribute to the development of these symptoms. There are measures that can be taken by the operator to possibly reduce the effects of vibration:

- Keep your body warm in cold weather. When operating the product, wear gloves to keep the hands and wrists warm. It is reported that cold weather is a major factor contributing to Raynaud's Syndrome.
- After each period of operation, exercise to increase blood circulation.

- Take frequent work breaks. Limit the amount of exposure per day.

If you experience any of the symptoms of this condition, immediately discontinue use and see your physician.

### ⚠ WARNING

Injuries may be caused, or aggravated, by prolonged use of a tool. When using any tool for prolonged periods, ensure that you take regular breaks.

### WHAT'S IN THE BOX

See page 5.

- Line trimmer
- Trimmer guard
- Front handle
- Operator's manual
- Battery (RLT1832X5 and RLT1832LI25 only)
- Battery charger (RLT1832X5 and RLT1832LI25 only)
- Philips screw

\*For OLT1832, the battery and charger are sold separately.

### SYMBOLS ON THE PRODUCT



Read and understand all instructions before operating the product. Follow all warnings and safety instructions.



Wear eye protection.



Wear ear protection.



Wear non-slip safety footwear when using the product.



Do not use metal blade(s) on the product.



Do not expose the product to rain or damp condition.



Remove the battery pack before starting any work on the product.



Adjust the shaft to the preferred length.



Beware of thrown or flying objects. Keep all bystanders, especially children and pets, at least 15 m away from the operating area.



Keep hands away from the cut-off blade.



Waste electrical products should not be disposed of with household waste. Please recycle where facilities exist. Check with your local authority or retailer for recycling advice.



Regulatory Compliance Mark (RCM). Product meets applicable regulatory requirements.



Guaranteed sound power level

The following signal words and meanings are intended to explain the levels of risk associated with the product:



**DANGER**

Indicates an imminently hazardous situation, which, if not avoided, will result in death or serious injury.



**WARNING**

Indicates a potentially hazardous situation, which, if not avoided, could result in death or serious injury.



**CAUTION**

Indicates a potentially hazardous situation, which, if not avoided, may result in minor or moderate injury.

**CAUTION**

(Without Safety Alert Symbol)  
Indicates a situation that may result in property damage.

## SYMBOLS IN THIS MANUAL



Parts or accessories sold separately



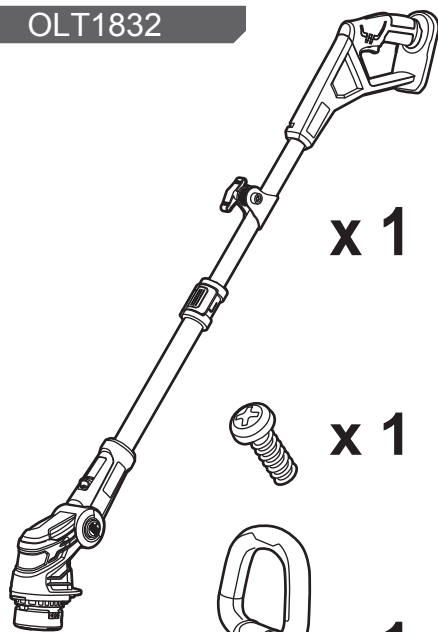
Note



Warning

## WHAT'S IN THE BOX

### OLT1832



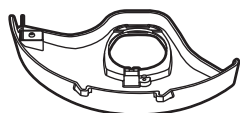
x 1



x 1



x 1

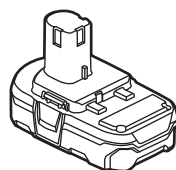


x 1



x 1

### RLT1832Li25

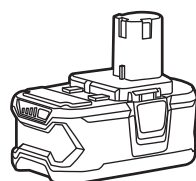


x 1

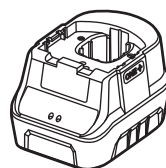


x 1

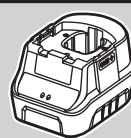
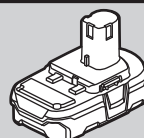
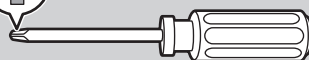
### RLT1832X5



x 1

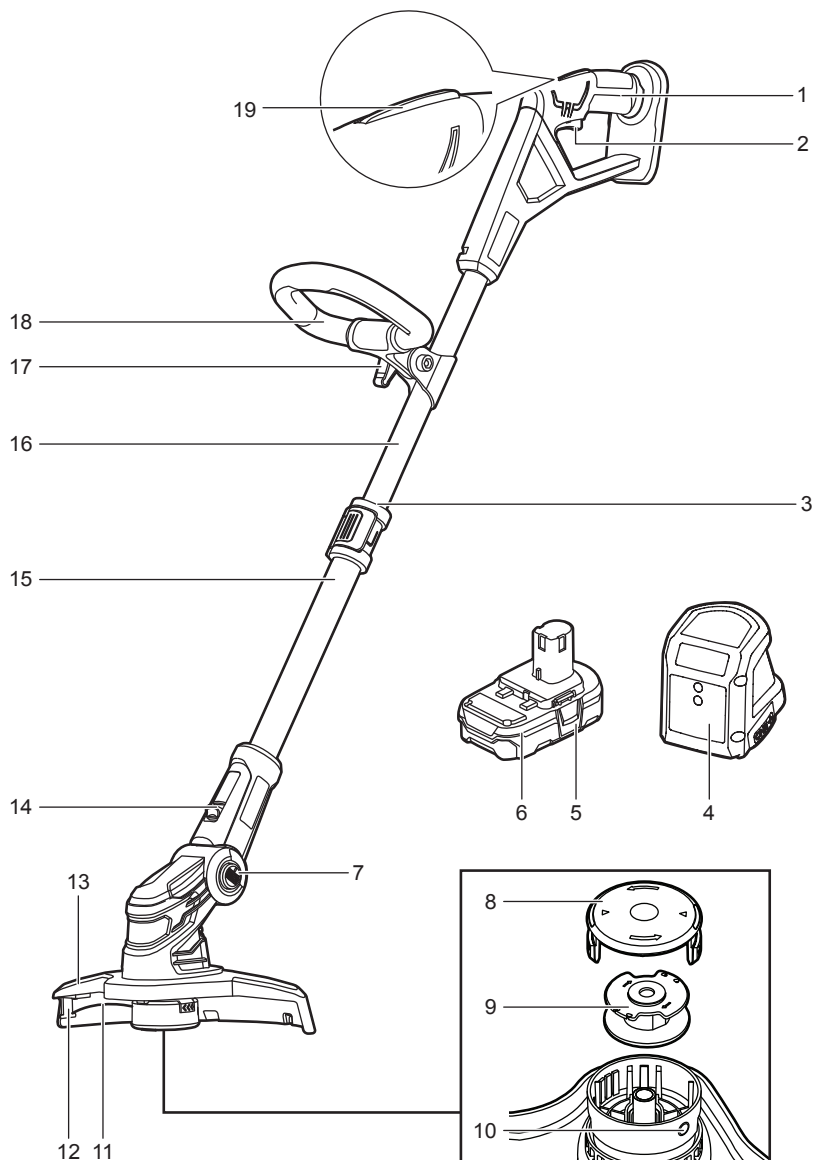


x 1



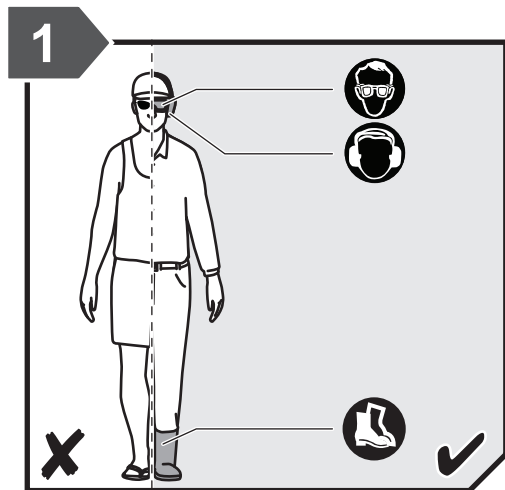
## KNOW YOUR PRODUCT

- |                         |                   |                             |
|-------------------------|-------------------|-----------------------------|
| 1. Rear handle          | 8. Spool cover    | 15. Lower shaft             |
| 2. Operating trigger    | 9. Spool          | 16. Upper shaft             |
| 3. Telescoping latch    | 10. Eyelet        | 17. Handle adjustment knob  |
| 4. Charger              | 11. Cutting line  | 18. Front handle            |
| 5. Battery latch button | 12. Cut-off blade | 19. Lock-out safety trigger |
| 6. Battery pack         | 13. Safety guard  |                             |
| 7. Pivoting button      | 14. Edging button |                             |

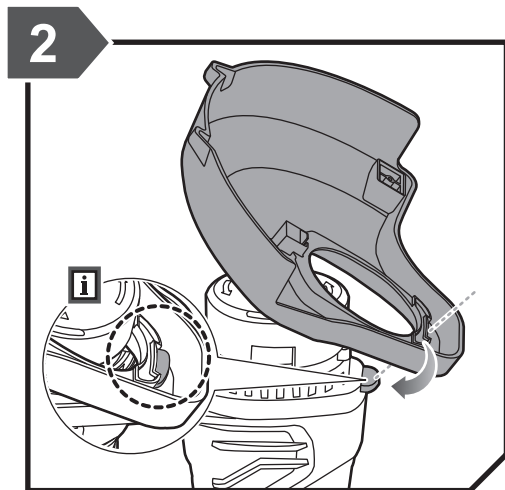




GETTING STARTED

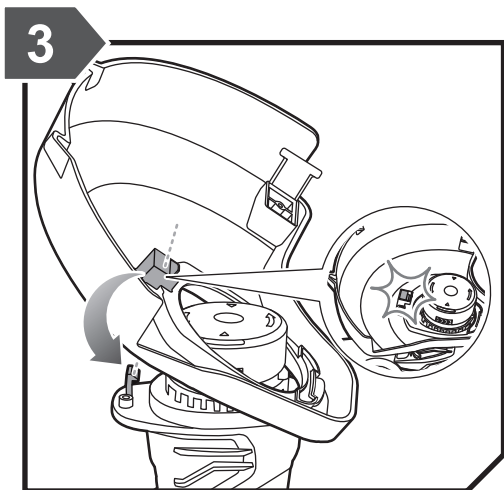


Always wear safety goggles or safety glasses with side shields when operating the product. Wear non-slip, heavy-duty protective gloves. Wear non-skid, protective footwear that will protect your feet and improve your footing on slippery surfaces.

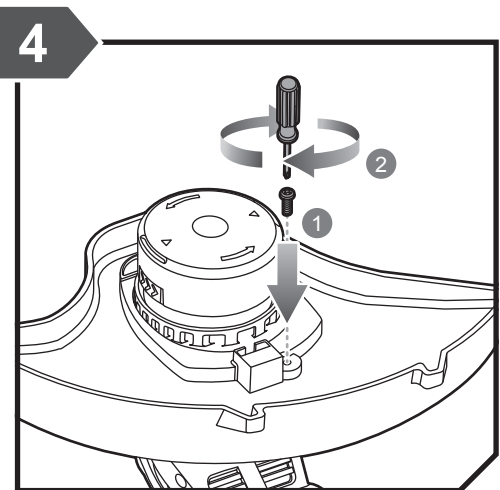


Attach the front part of the safety guard to the trimmer head.

GETTING STARTED

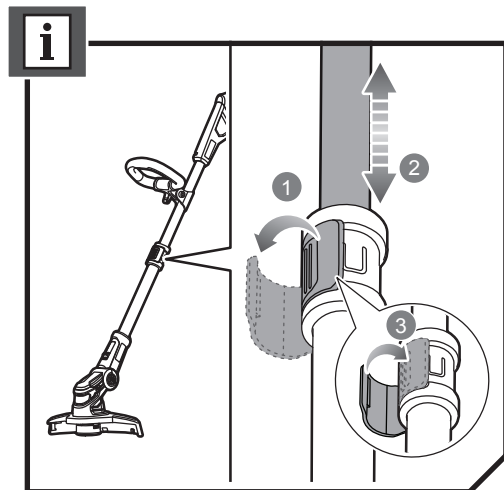


Attach the back part of the safety guard to the trimmer head until the latch clicks into place.

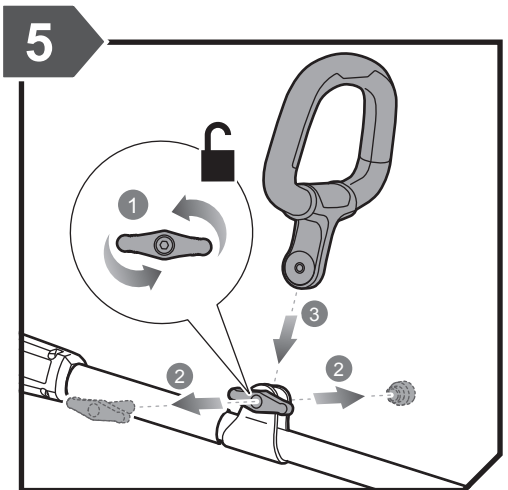


Screw on the safety guard to the trimmer head.

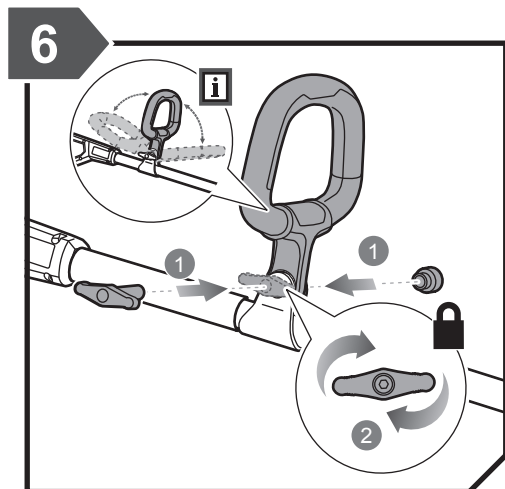
GETTING STARTED



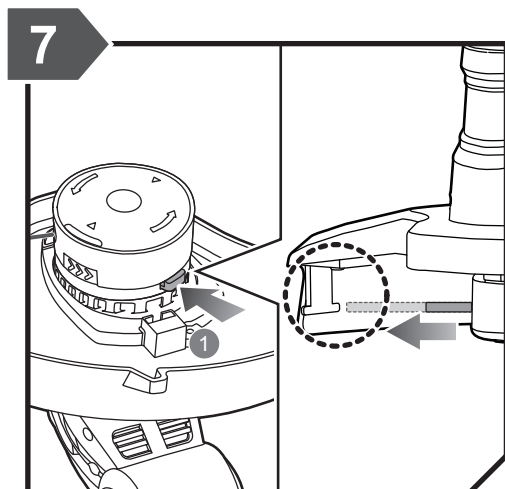
**NOTE:** Unclasp the telescoping latch. Adjust the shaft to the preferred length. Snap the telescoping latch back into place.



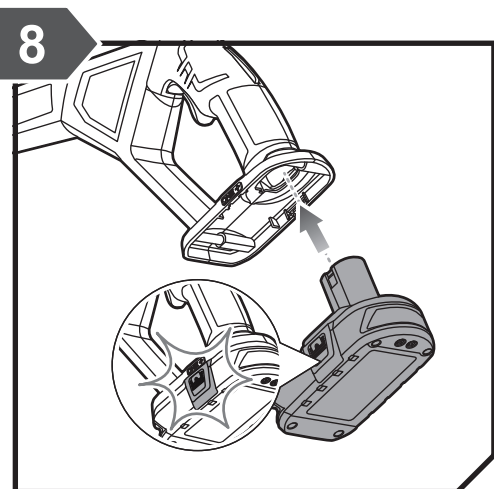
Loosen and remove the handle adjustment knob. Install the front handle.



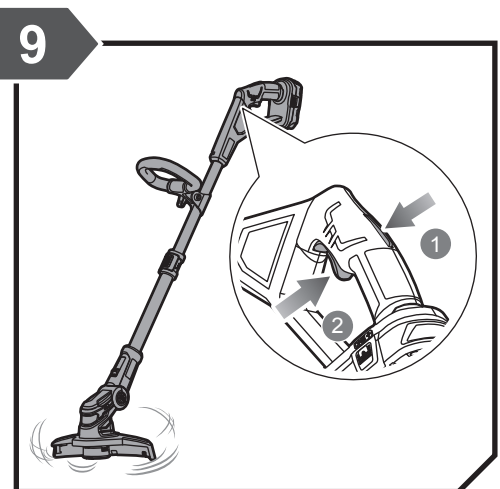
Attach the handle adjustment knob. Tighten the knob to secure the handle in place.  
**NOTE:** The angle of the front handle can be adjusted to 180°.



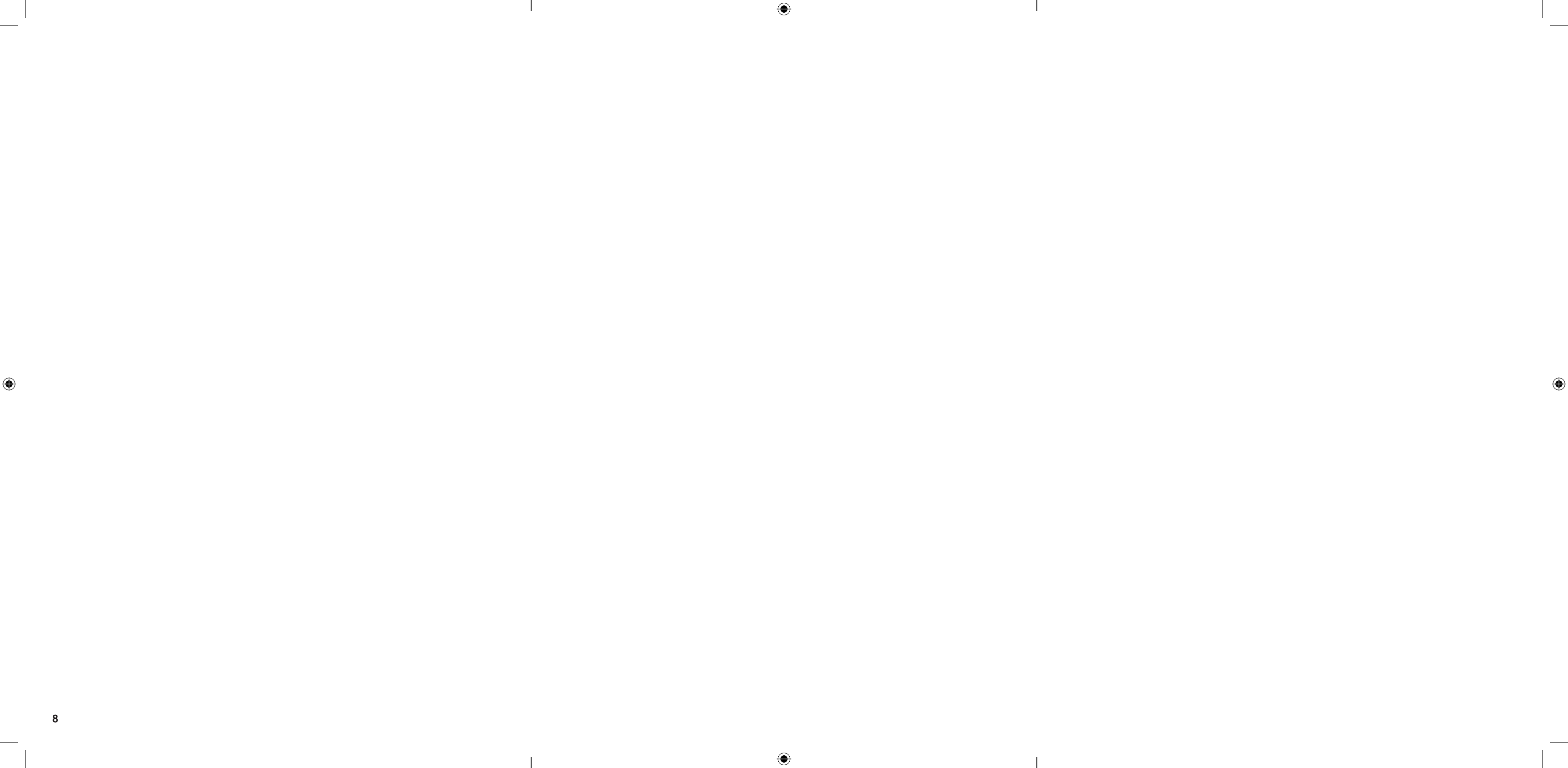
Push the button on the cutting head. Pull the cutting line to advance the line length.



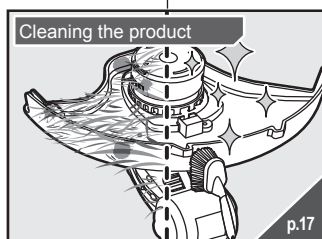
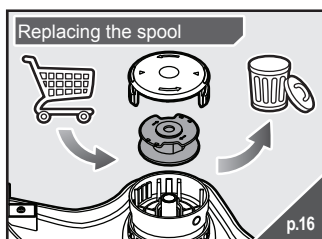
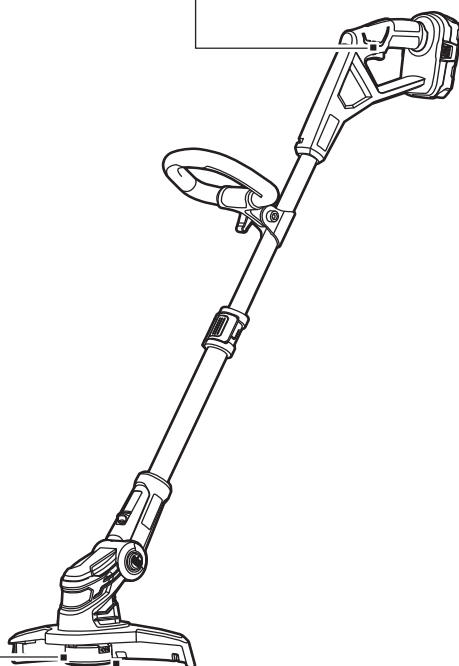
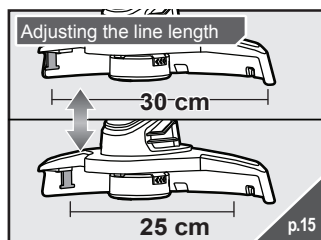
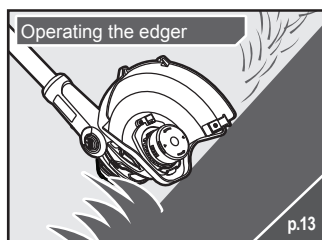
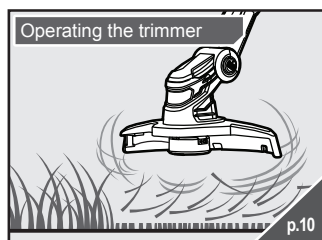
Insert the battery pack until the latches click into place.



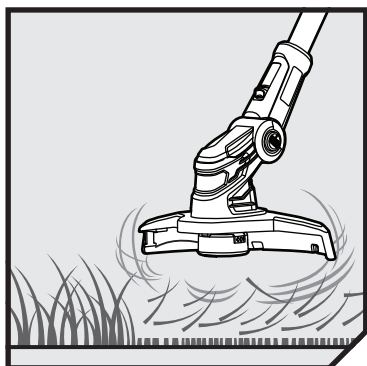
Push the lock-out safety trigger and squeeze the operating trigger to operate the product.



## OVERVIEW



## OPERATION



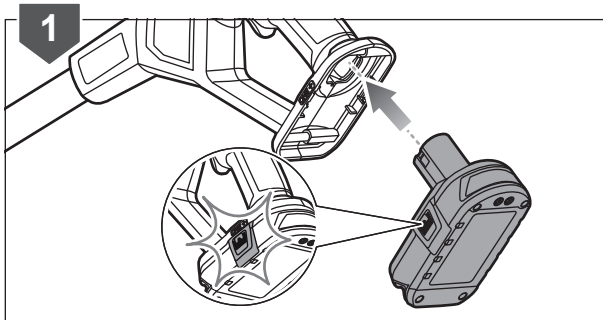
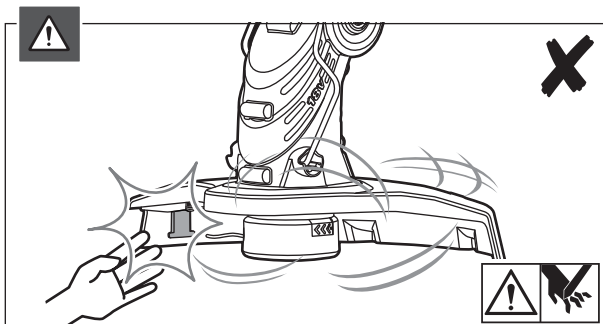
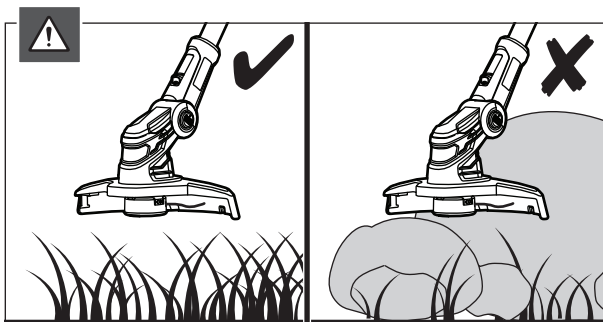
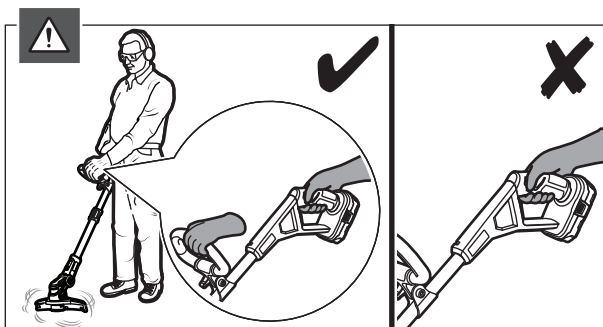
### OPERATING THE TRIMMER

**WARNING:** For safety reasons, the product must be adequately controlled by a two-handed operation. Hold the product with the right hand on the rear handle and the left hand on the front handle.

**WARNING:** Do not cut in a dangerous cutting area. Avoid trees and shrubs. Tree bark, wood mouldings, cladding, and fence posts can easily be damaged by the line.

**WARNING:** Exercise extreme caution when using the product. Keep hands and feet away from the cutting means at all times, especially when turning on the motor.

1. Insert the battery pack until the latches click into place.



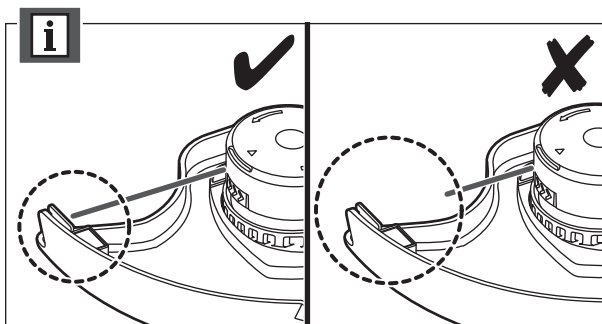
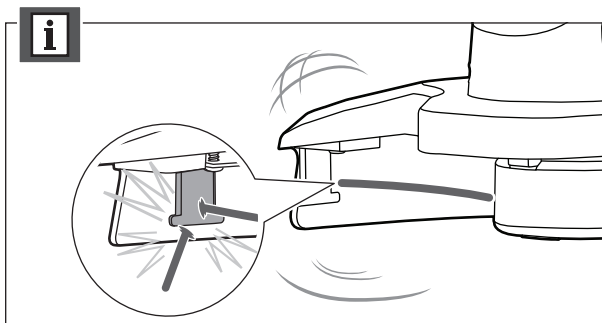
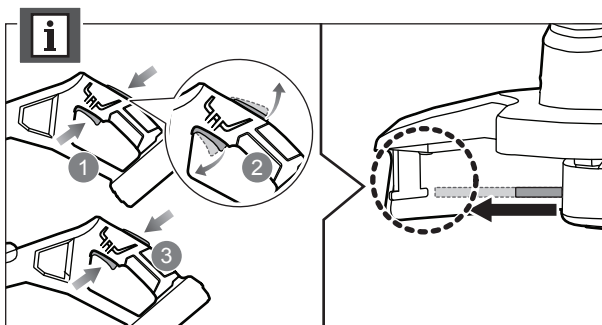
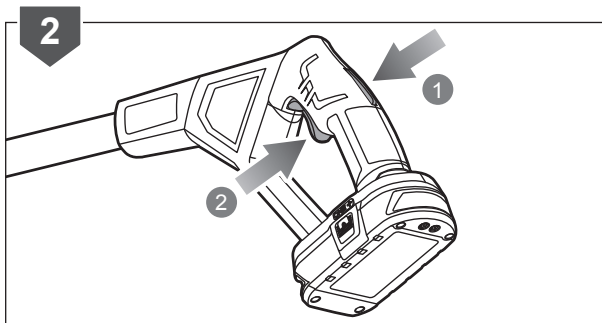
## OPERATION

2. Push the lock-out safety trigger and squeeze the operating trigger to operate the product.

**NOTE:** Press the lock-out safety trigger and the operating trigger to release approximately 3.5 mm of the cutting line. To extend the line further, wait until the motor stops and press both triggers again until the line reaches the full cutting capacity. No further trimming line is to be released while the motor is still running.

**NOTE:** The small blade fitted to the cutting attachment guard is designed to trim the newly extended line to the correct length for safe and optimum performance. The blade is very sharp. Do not touch the blade, particularly when cleaning the product.

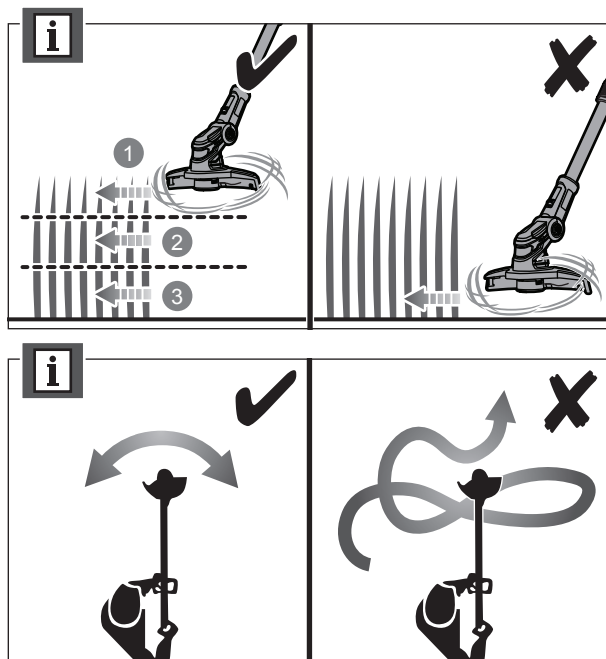
**NOTE:** For best cutting, advance the cutting line until it is trimmed to length by the cut-off blade.



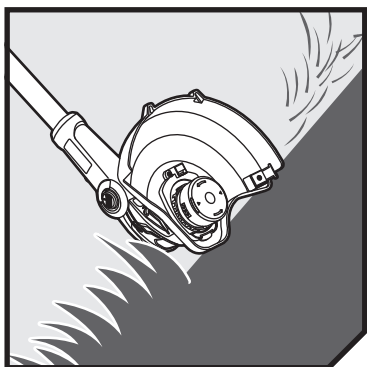
## OPERATION

**NOTE:** Cut tall grass from the top down. This prevents grass from wrapping around the shaft housing and bump head, which may cause damage from overheating.

**NOTE:** For cutting ease and safety, cut the grass from the right side to the left side.



## OPERATION

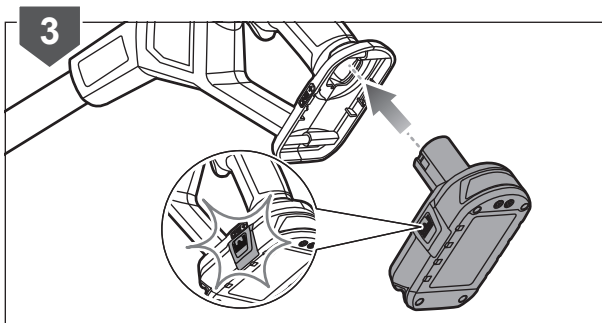
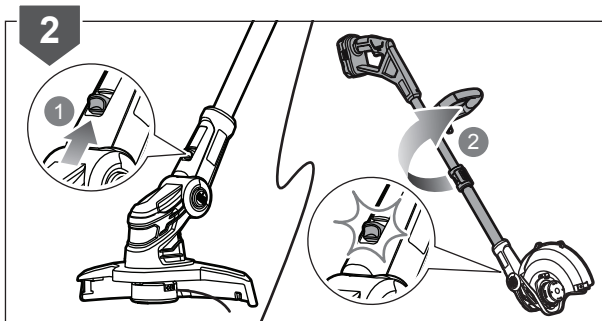
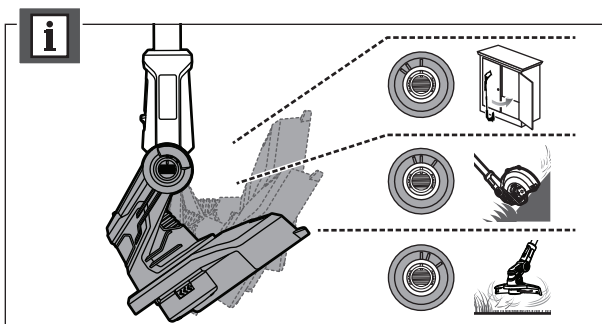
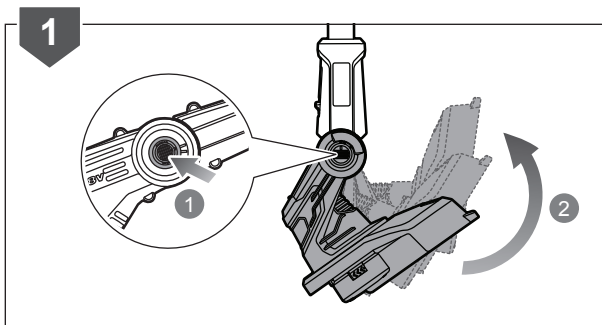


### OPERATING THE EDGER

1. Push the pivoting button, and adjust the trimmer head.

**NOTE:** The trimmer head can be adjusted to three different positions indicated by the notches. Adjust the trimmer head to the first notch for trimming, the second notch for edging, and the third notch for storing.

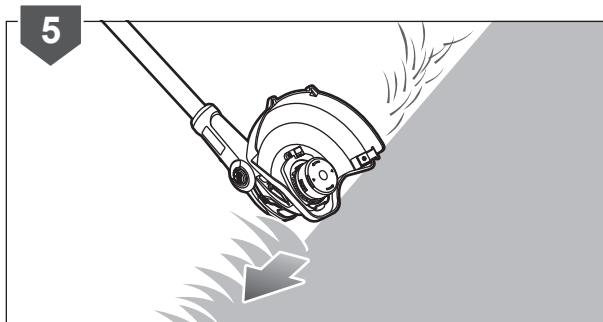
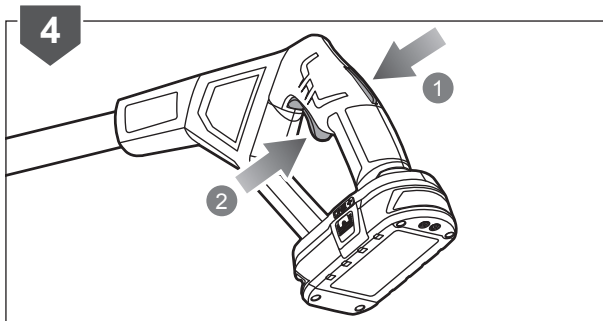
2. Slide the edging button upwards. Rotate the upper shaft until the edging coupler clicks into place.
3. Insert the battery pack until the latches click into place.



## OPERATION

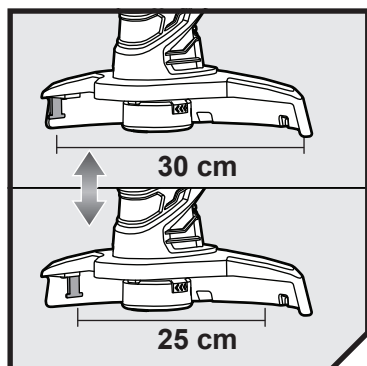
4. Push the lock-out safety trigger and squeeze the operating trigger to operate the product.
5. Use the edger along sidewalks, driveways, flower beds, curbs, and similar areas.

**NOTE:** Cut at a steady pace. If the blade begins to bog down, you are edging too fast. Slow your pace. Do not force the blade into the ground.





## OPERATION

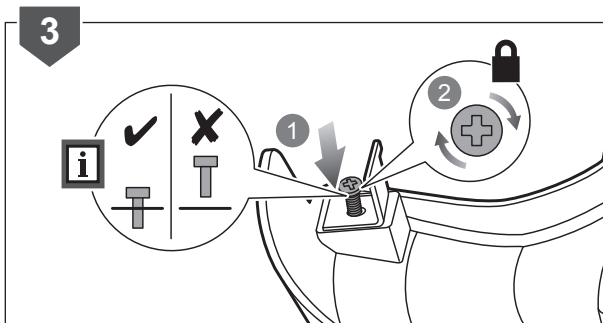
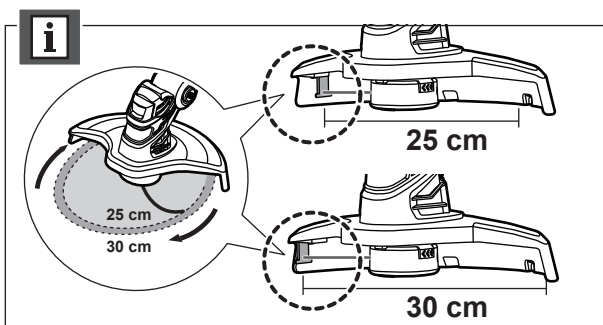
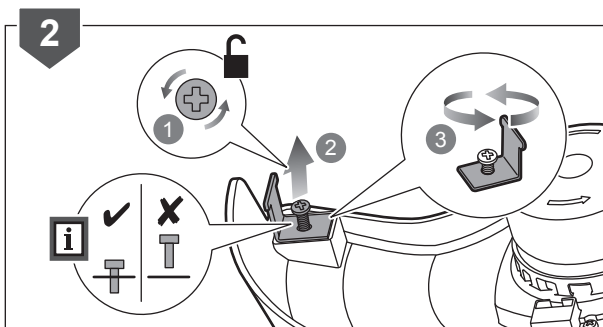
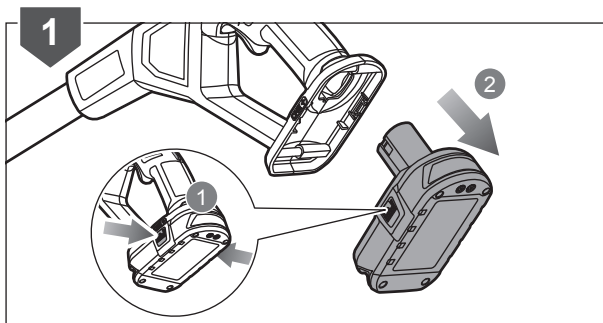


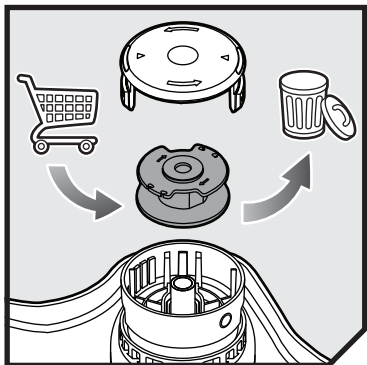
### ADJUSTING THE LINE LENGTH

1. Press the latches on the battery pack to remove the battery pack.
2. Loosen the screw on the cut-off blade. Rotate the cut-off blade.

**NOTE:** The cutting width of the line trimmer can be adjusted according to preference. A cutting width of 30 cm gets the job done faster but results in a lesser runtime.

3. Install the screw on the cut-off blade. Tighten the screw to secure the cut-off blade.



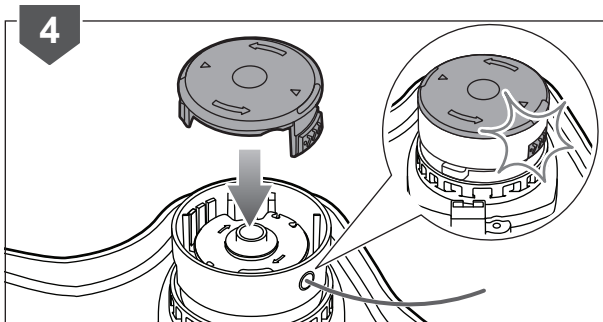
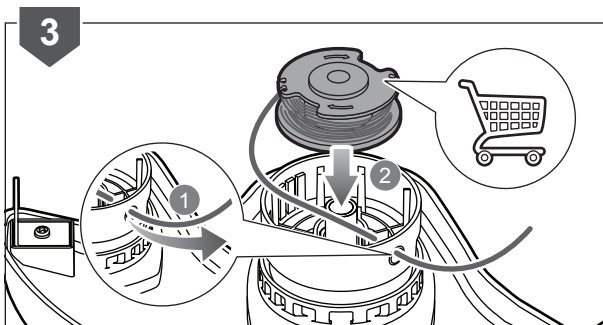
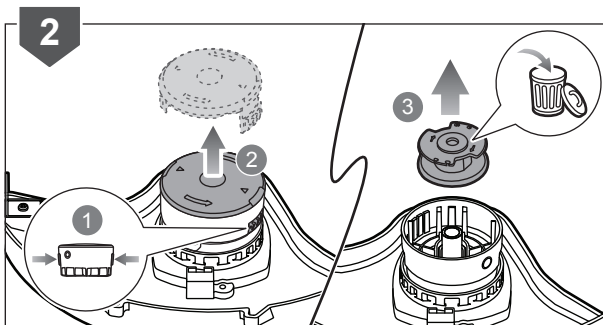
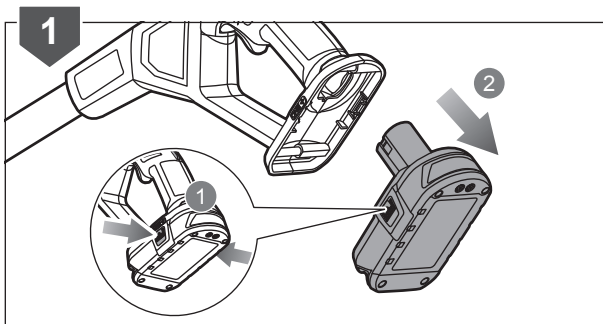


### REPLACING THE SPOOL

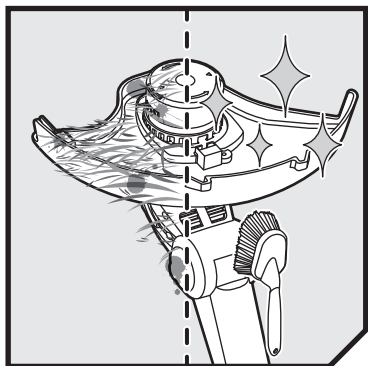
1. Press the latches on the battery pack to remove the battery pack.
2. Press the tabs on the sides of the spool retainer. Remove the spool cover and the spool.
3. Thread the cutting line through the eyelet. Install the spool.

**NOTE:** Ensure that the cutting line and slot are aligned with the eyelet.

4. Attach the spool cover until the latches click into place.



## MAINTENANCE

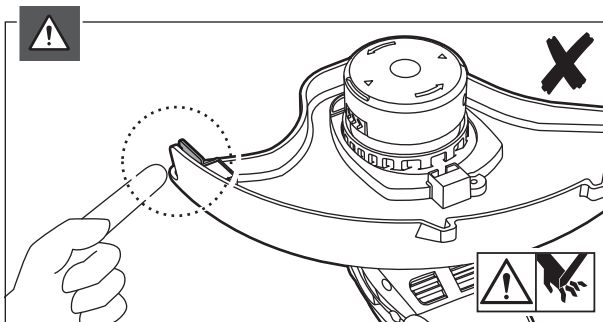
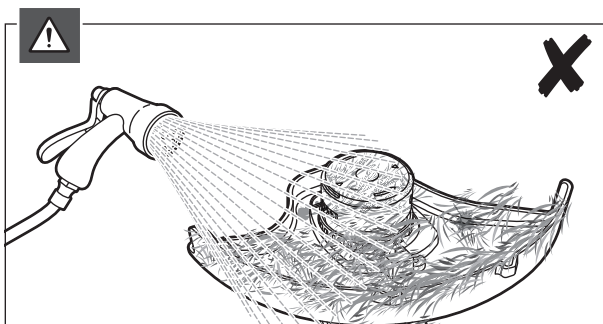
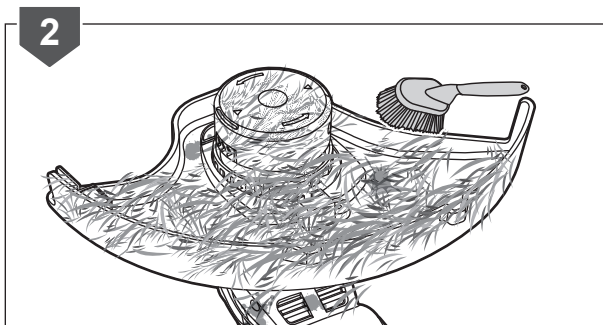
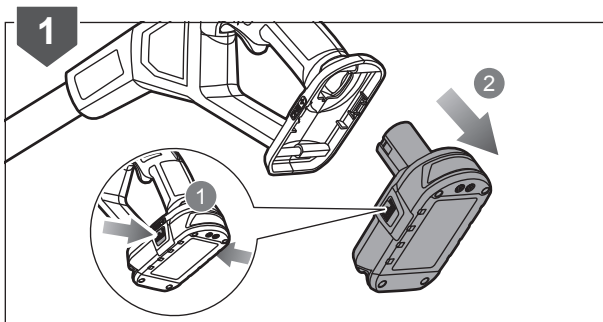


### CLEANING THE PRODUCT

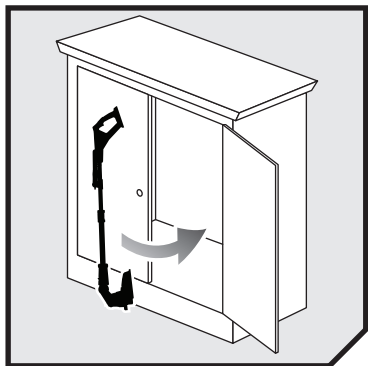
1. Press the latches on the battery pack to remove the battery pack.
2. Remove all foreign materials from the product.

**WARNING:** Do not use water to clean the product. Avoid using solvents when cleaning plastic parts. Most plastics are susceptible to damage from various types of commercial solvents and may be damaged by their use.

**WARNING:** The small blade fitted to the cutting attachment guard is designed to trim the newly extended line to the correct length for safe and optimum performance. The blade is very sharp. Do not touch the blade, particularly when cleaning the product.



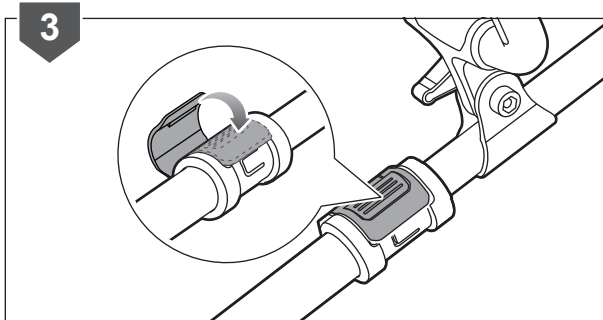
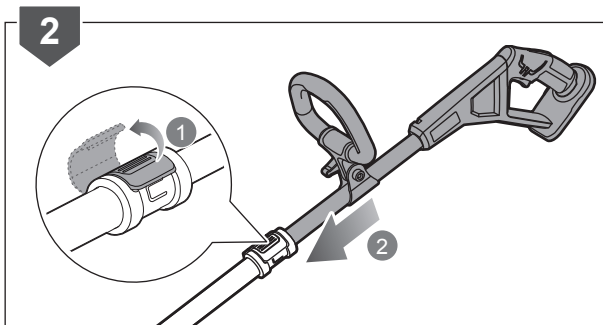
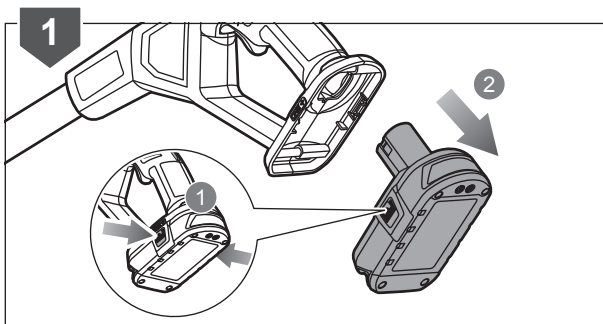
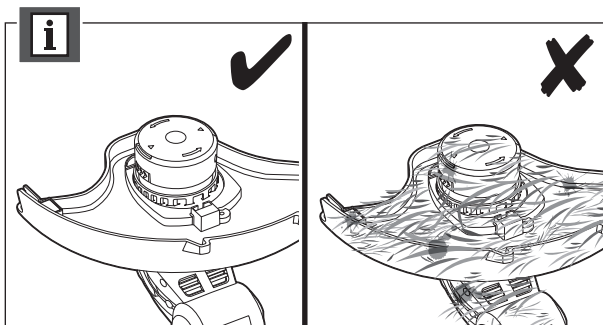
## STORAGE



### STORING THE PRODUCT

**NOTE:** Clean the product before storing.

1. Press the latches on the battery pack to remove the battery pack.
2. Unclasp the telescoping latch. Push the upper shaft into the lower shaft.
3. Snap the telescoping latch into place.



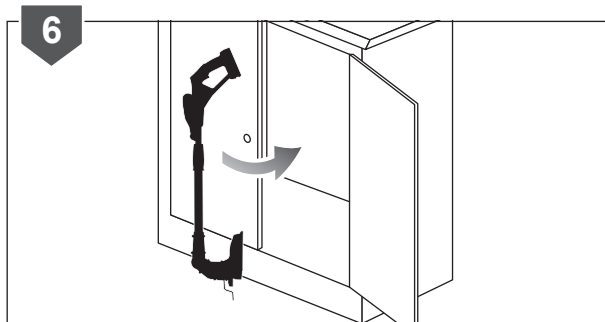
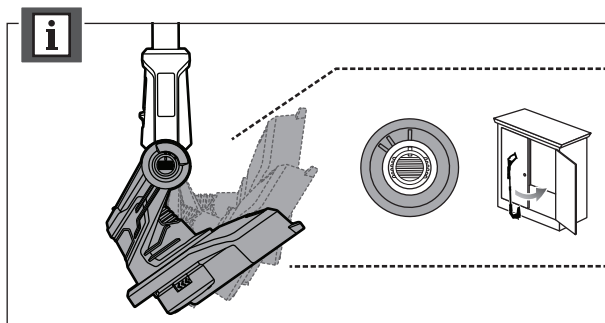
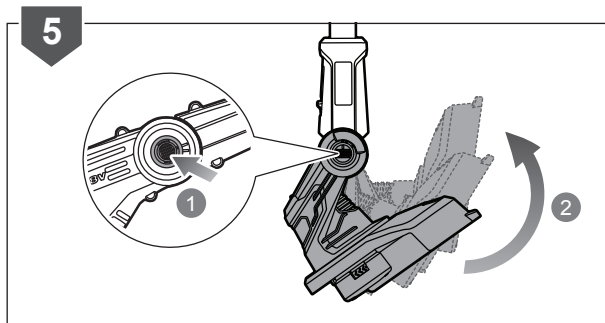
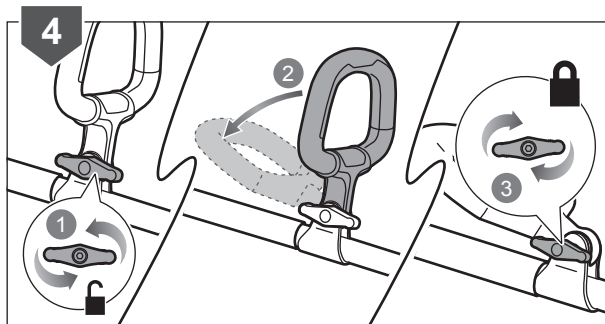
## STORAGE

- Loosen the handle adjustment knob. Tilt the front handle towards the upper shaft. Tighten the handle adjustment knob to secure.

- Push the pivoting button. Adjust the trimmer head to the storing position.

**NOTE:** Adjust the trimmer head to the third notch for storing.

- Store the product in a cool, dry, and well-ventilated place that is inaccessible to children. Keep the product away from corrosive agents, such as garden chemicals and de-icing salts. Do not store the product outdoors.



## PRODUCT SPECIFICATIONS

### Cordless Line Trimmer / Edge Trimmer

Model	RLT1832X5 / RLT1832LI25 / OLT1832	
Voltage	18 V	
No-load speed		
Cutting capacity: 25 cm	8,400 min <sup>-1</sup>	
Cutting capacity: 30 cm	7,800 min <sup>-1</sup>	
Cutting line diameter	1.6 mm	

Vibration level (in accordance with EN 50636-2-91 Annex BB)

	Line trimmer	Edge trimmer
Rear handle	0.7 m/s <sup>2</sup>	0.8 m/s <sup>2</sup>
Front handle	0.6 m/s <sup>2</sup>	0.6 m/s <sup>2</sup>
Uncertainty of measurement	1.5 m/s <sup>2</sup>	1.5 m/s <sup>2</sup>

Noise emission level (in accordance with EN 50636-2-91 Annex CC)

	Line trimmer	Edge trimmer
A-weighted sound pressure level at the operator's position	82.4 dB(A)	83.5 dB(A)
Uncertainty of measurement	2.5 dB	2.5 dB
A-weighted sound power level	94.2 dB(A)	94.2 dB(A)
Uncertainty of measurement	1.1 dB	1.1 dB
Weight without battery pack	2.4 kg	2.4 kg

### With RAC155

A-weighted sound pressure level at the operator's position	$L_{PA} = 79.2 \text{ dB(A)}$
Uncertainty	$K_{PA} = 3.0 \text{ dB}$
A-weighted sound power level	$L_{WA} = 94.5 \text{ dB(A)}$
Uncertainty	$K_{WA} = 1.9 \text{ dB}$
Vibration level (line/edge trimmer)	
Front handle	$a_h = 7.4 / 6.9 \text{ m/s}^2$
Rear handle	$a_h = 7.5 / 9.8 \text{ m/s}^2$
Uncertainty	$K = 1.5 \text{ m/s}^2$

## BATTERY AND CHARGER

Model	RLT1832X5	RLT1832LI25	OLT1832
Battery pack	RB18L50A	RB18L25A	—
Weight	0.75 kg	0.45 kg	—
Charger	RC18120	RC18115	—
Compatible battery packs	RB18L13, RB18L26, RB18L15, RB18L15A, RBL18L15B, RB18L20, RB18L20A, RB18L25, RB18L25A, RB18L30, RB18L30A, RB18L40, RB18L40A, RB18L50, RB18L50A, RB18L60, RB18L60A, RB18L90, RB18L90A		
Compatible chargers	BCS618G, RC18150U, BCL14181H, BCL14183H, RC18627U, RC18120, RC18150, *BCL14181V, RC18115		

\*The compatible charger is for charging in vehicles with 12 V DC outlets.

## REPLACEMENT PART

Spool (3 pcs.)	RAC1211
Heavy-duty blades	RAC1103
Spool and cap	RAC1204

## VIBRATION LEVEL

### ⚠ WARNING

The declared vibration value has been measured with a standard test method and may be used to compare one tool with another.

The declared vibration value may be used in a preliminary assessment of exposure.

The vibration emission during actual use of power tool can differ from the declared total value depending on the ways in which the tool is used.

Identify safety measures to protect yourself based on an estimation of exposure in the actual conditions of use, taking account of all parts of the operating cycle such as the times when the tool is switched off and when it is running idle in addition to the trigger time.





*RYOBI is a trademark of Ryobi Limited,  
and is used under license.  
© 2020 Techtronic Cordless GP.*

Imported by:

**Techtronic Industries Australia Pty Ltd**  
31 Gilby Road, Mount Waverley, VIC 3149,  
Melbourne, Australia

**Techtronic Industries N.Z. Limited**  
Unit C, 70 Business Parade South,  
Highbrook, Auckland 2013, New Zealand

961068233-02