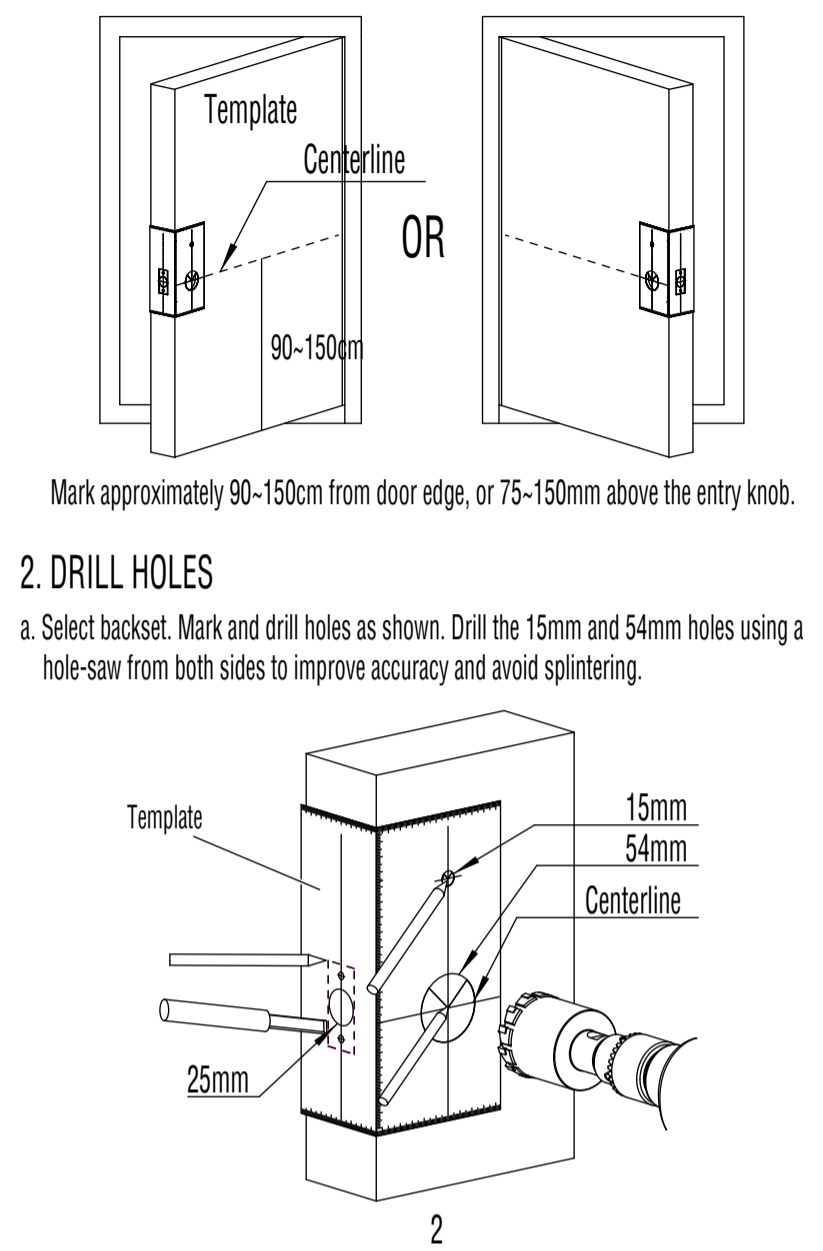
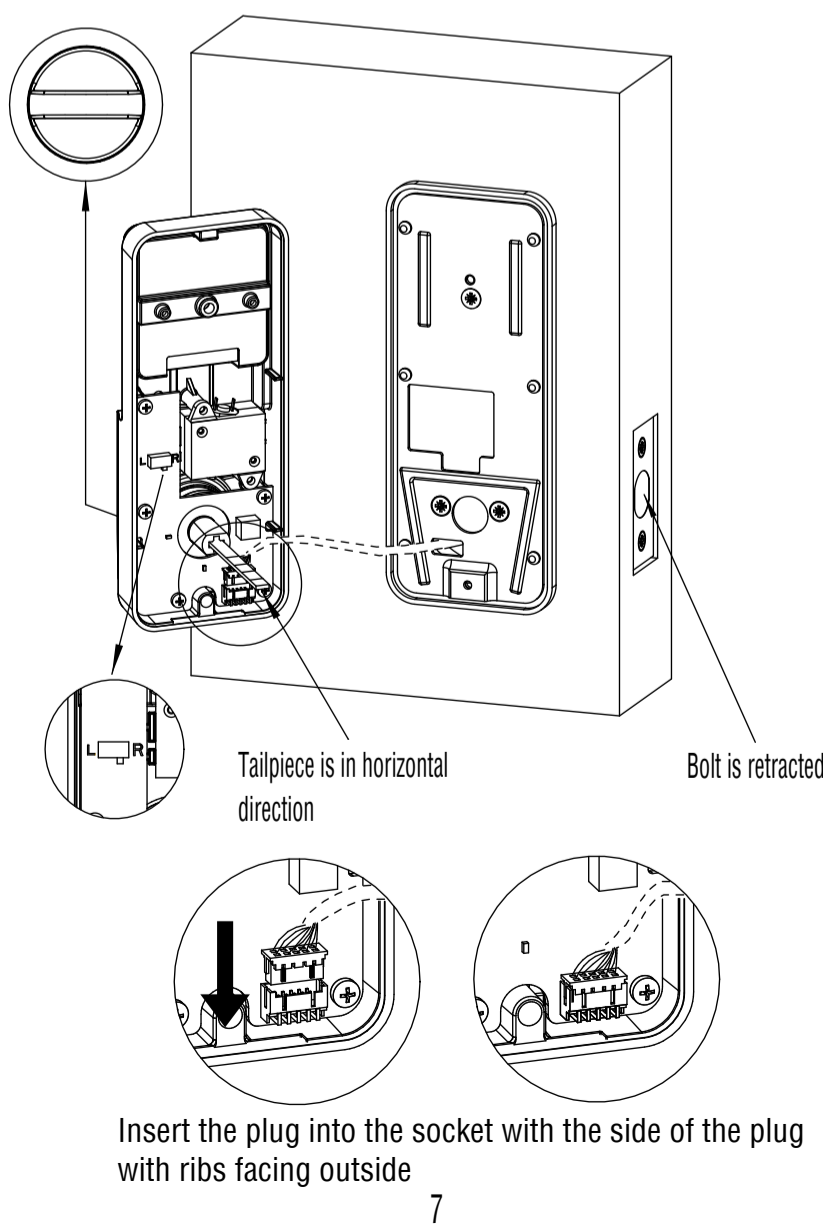


- Mark centerline on door
- Stand so door swings towards you. Align template on centerline and fold template as shown.

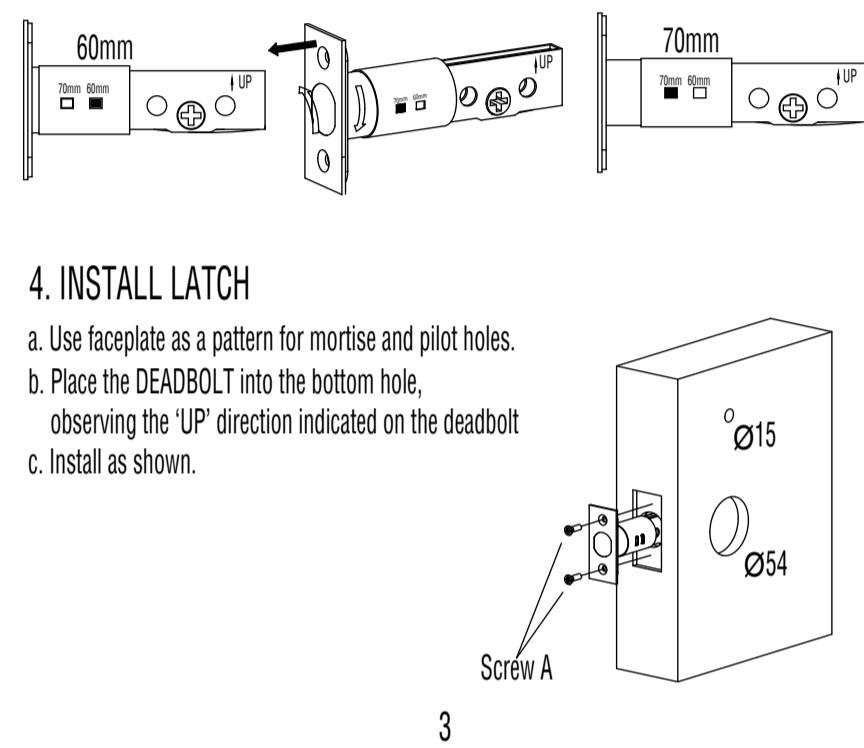


- Example of right handed door depicted below.



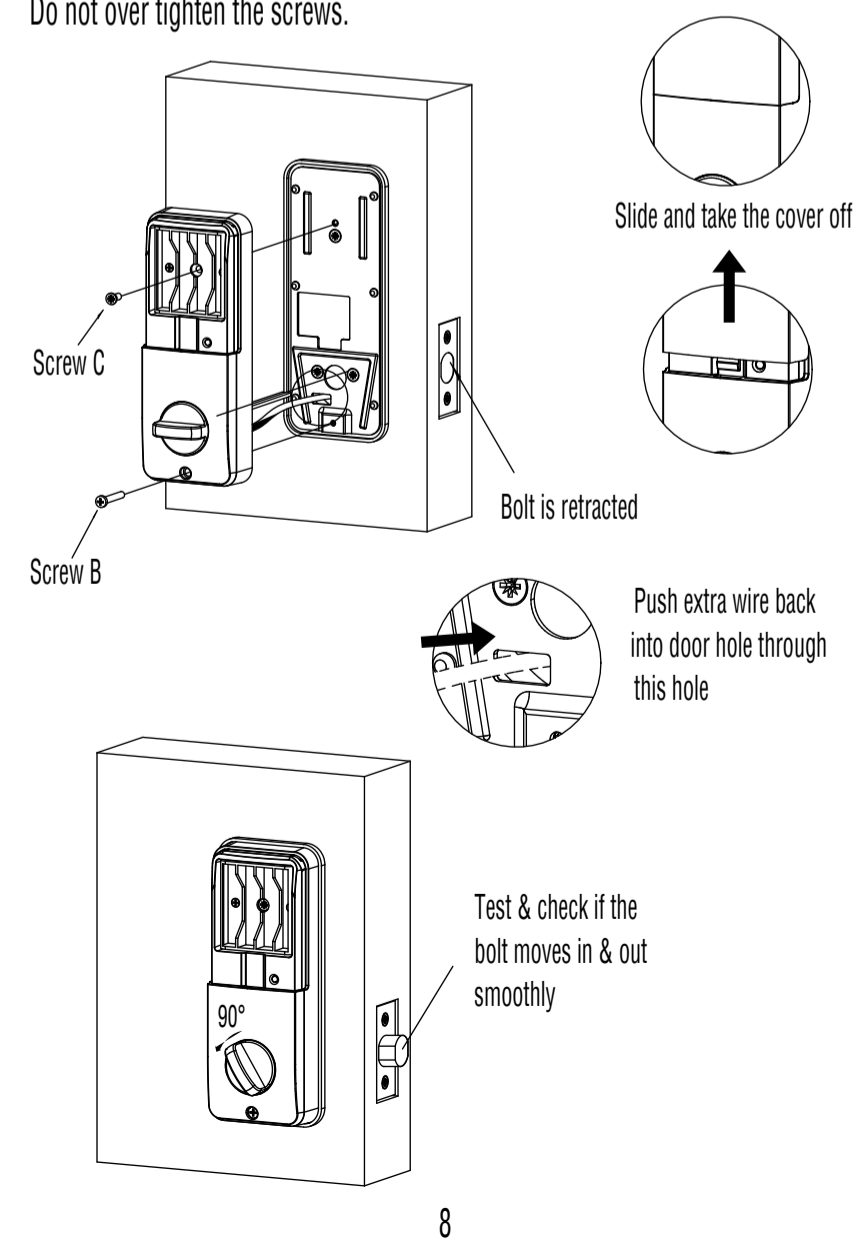
3. LATCH BACKSET ADJUSTMENT

Latch backset adjustment only needs to be made if your door needs a 70mm backset. Otherwise NO ADJUSTMENT is necessary.



11. INSTALL INSIDE ASSEMBLY AND TEST

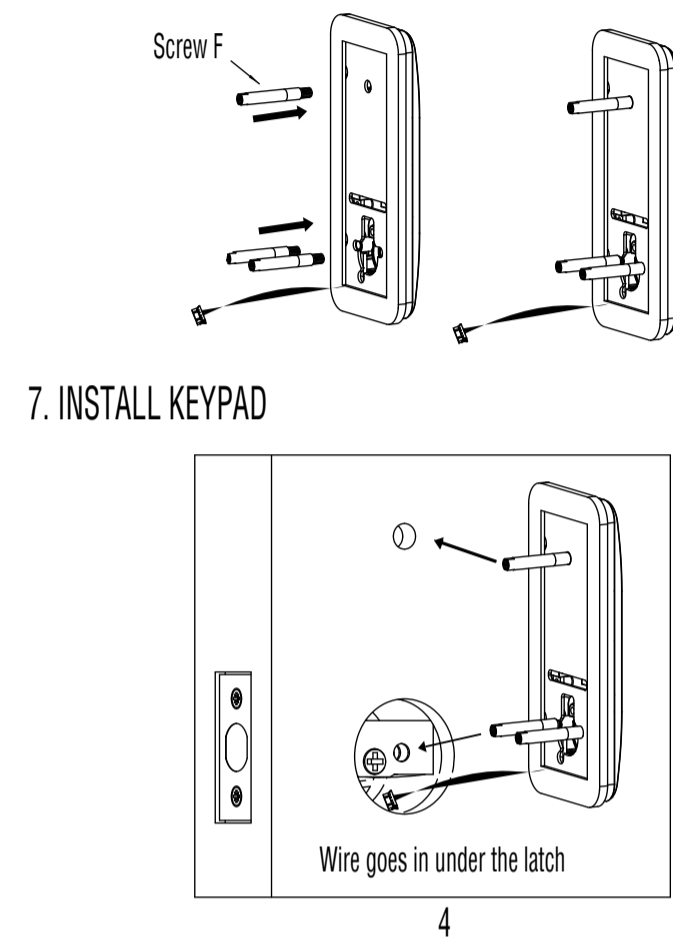
Turn the knob to test lock & unlock functions before fully tightening the screws.
Make sure the bolt extends and retracts smoothly.
Do not over tighten the screws.



5. PREPARE DOOR JAMB

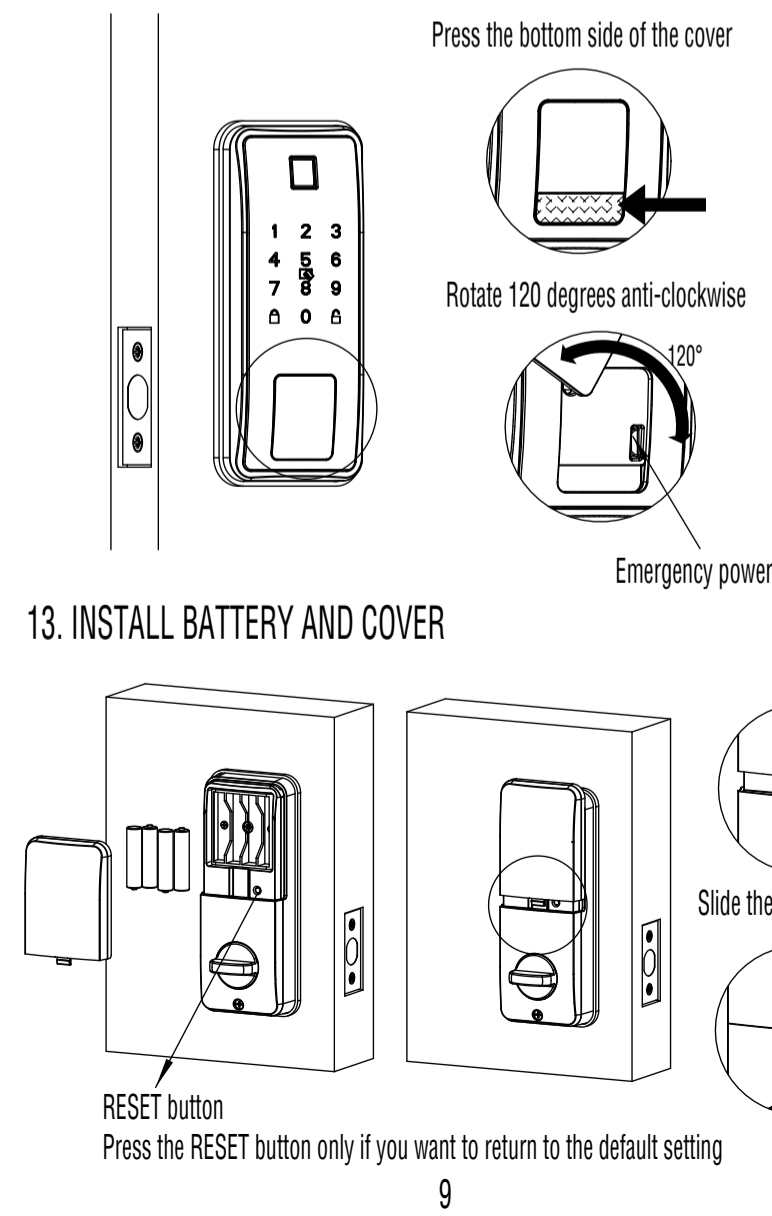
- Mark centerlines on jamb exactly opposite center of latch hole.
- Use strike plate as a pattern for mortise and pilot holes.
Chisel out the mortise. Strike plate must fit flush with the surface of door jamb.

6. PREPARE KEYPAD

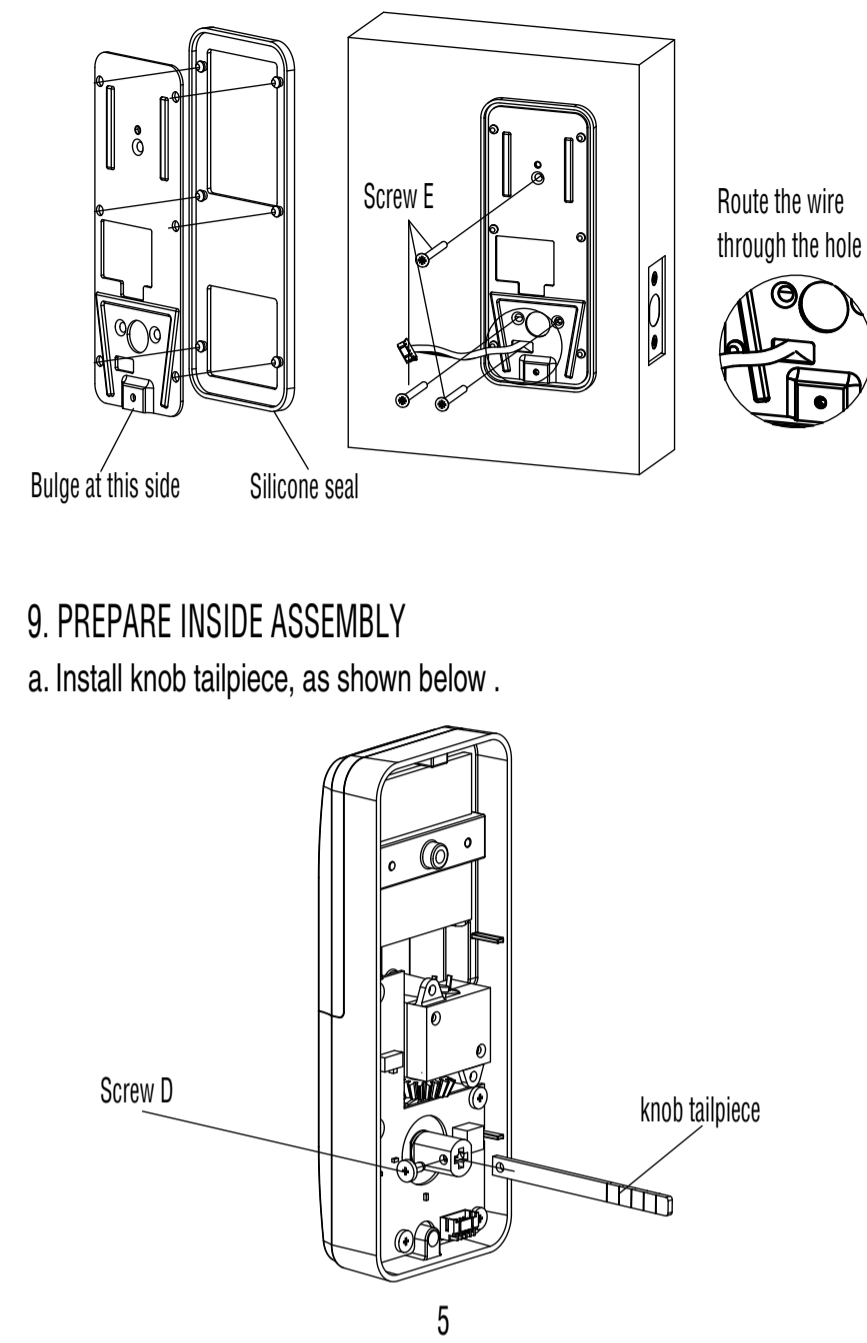


12. BACKUP USB POWER SUPPLY

In the event the battery power is low and cannot be unlocked from the outside, the emergency power supply socket (Type C) can be located under the front cover as shown below.



8. INSTALL MOUNTING PLATE



14. OPERATION TEST

